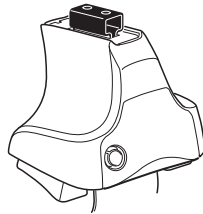
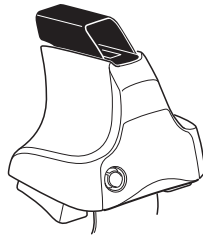
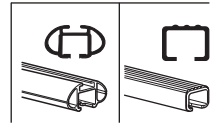


# Kit 1721

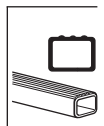
MAZDA CX-5, 5-dr SUV, 13- (Without railing)



754 Rapid System  
480R Rapid Traverse (North America)



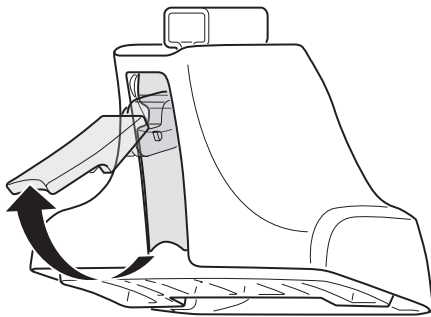
480 Traverse (North America)



754 Rapid System  
480R Rapid Traverse (North America)

480 Traverse (North America)

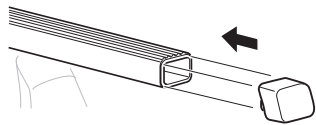
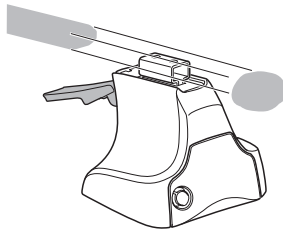
1



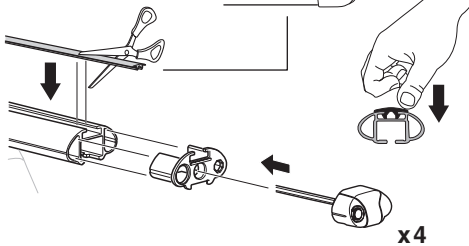
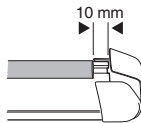
2



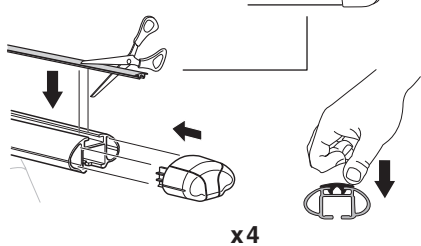
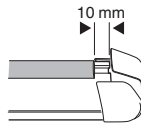
754 Rapid System  
480R Rapid Traverse  
(North America)



x4



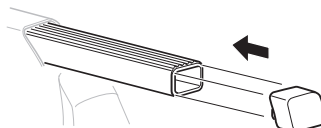
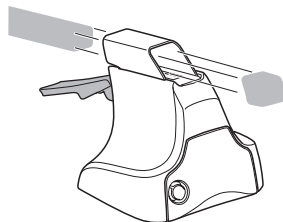
x4



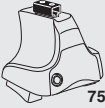
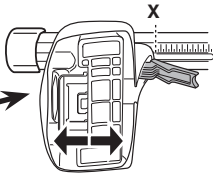
x4



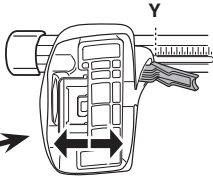
480 Traverse  
(North America)



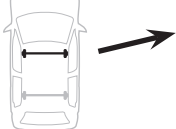
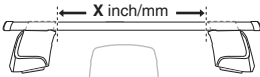
x4

**3****754** Rapid System

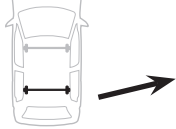
	<b>X</b>
<b>MAZDA CX-5, 5-dr SUV, 13- (Without railing)</b>	<b>38,5</b>



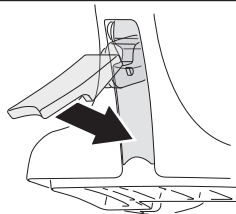
	<b>Y</b>
<b>MAZDA CX-5, 5-dr SUV, 13- (Without railing)</b>	<b>34</b>

**3****480R** Rapid Traverse**480** Traverse**(North America)**

	<b>X inch</b>	<b>X mm</b>
<b>MAZDA CX-5, 5-dr SUV, 13- (Without railing)</b>	<b>40 3/4"</b>	<b>1036 mm</b>

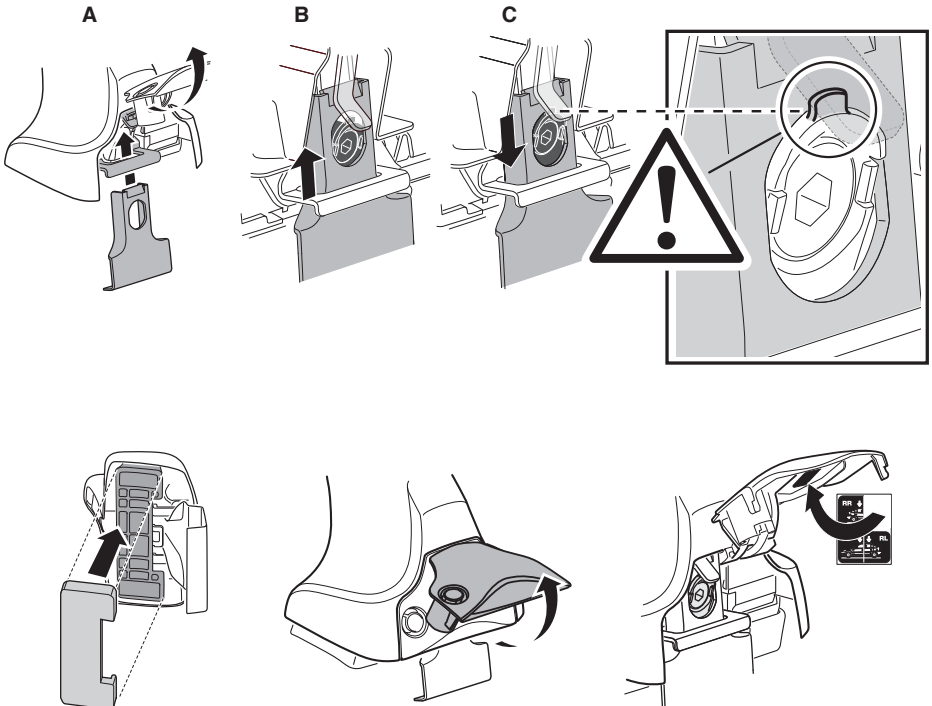
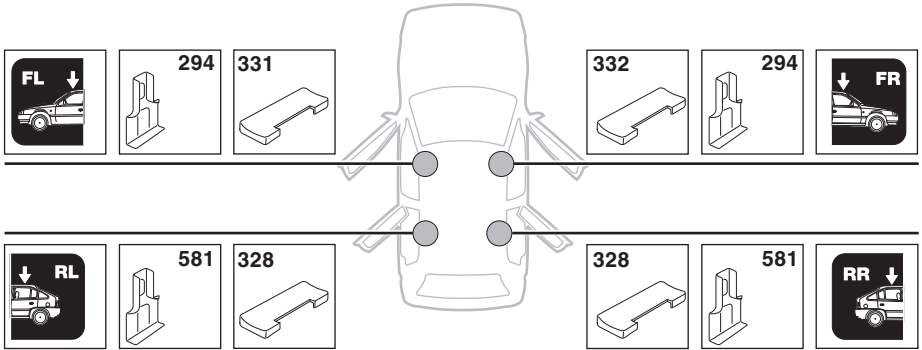


	<b>Y inch</b>	<b>Y mm</b>
<b>MAZDA CX-5, 5-dr SUV, 13- (Without railing)</b>	<b>39"</b>	<b>991 mm</b>

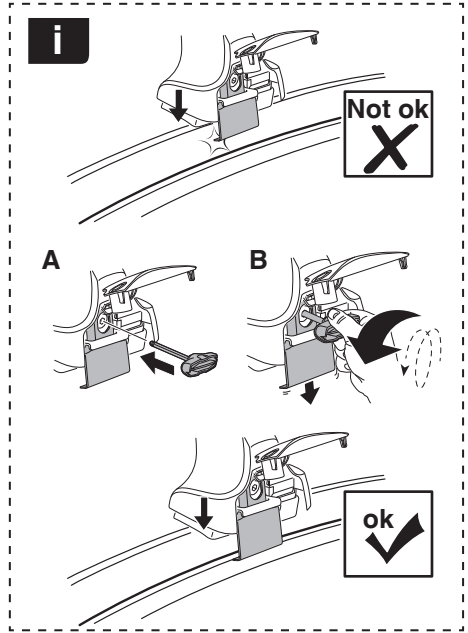
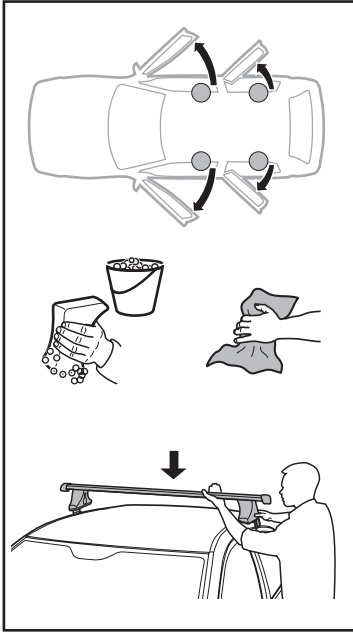
**4**

# 5

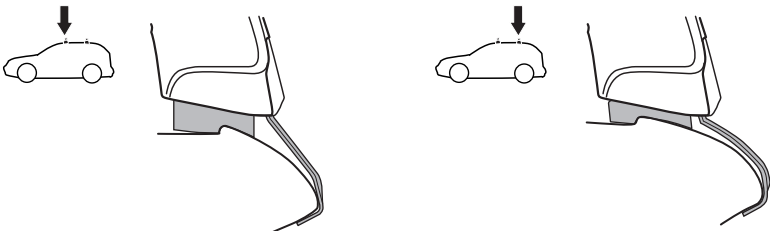
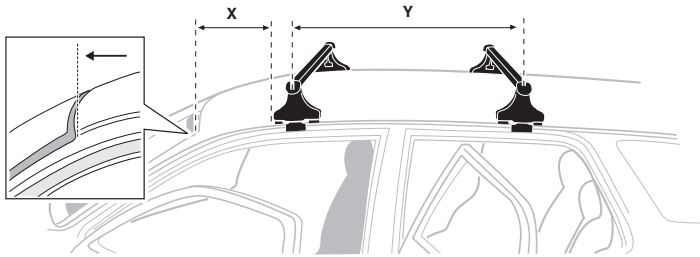
MAZDA CX-5, 5-dr SUV, 13- (Without railing)



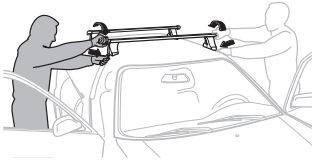
6



	X mm	Y mm	X inch	Y inch
MAZDA CX-5, 5-dr SUV, 13- (Without railing)	292 mm	711 mm	11 1/4"	28"



7



GB/US Tighten alternately  
 D Die Schrauben abwechselnd anziehen  
 F Serrer alternativement chaque côté  
 NL Afwisselend aan de linker- en de rechterkant aandraaien  
 I Alternare il serraggio delle viti  
 E Apretar alternativamente  
 PT Aperte alternadamente  
 S Dra åt växelvis  
 FIN Kierrä vuorotellen  
 EST Pinguldage vaheldumisi  
 LAT Pieļieciet pamišus  
 LIT Užsukinėkite pakaitomis  
 PL Śruby dokręcaj naprzemiennie  
 RU Затягивайте попеременно

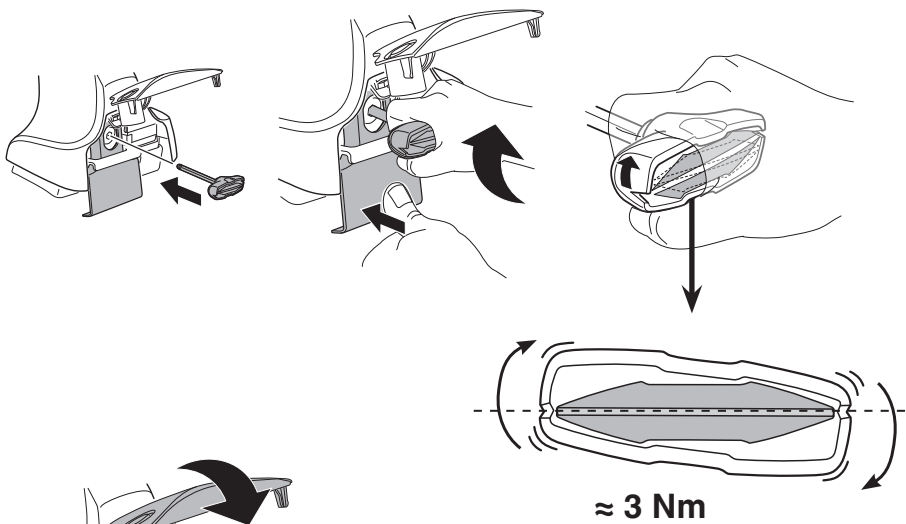
CZ Pokręťta bagażnika dokręcaj dokręcaj naprzemiennie.  
 SK Dofahajte striedavo  
 SLO Privijajte izmenično.  
 HR Naizmjenočno zategnite  
 HU Egymástól függetlenül szorítandó  
 GR Σφιγγείτε εναλλάξ  
 TR Dönüşümlü sıkın

中文 交替拧紧

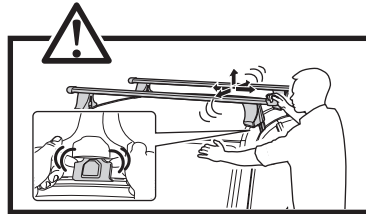
한국어 번갈아 가며 조이십시오.

日本語 交互に締め付けてください。

ไทย ชันในแบบสลับ



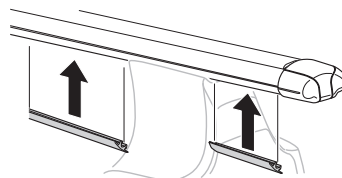
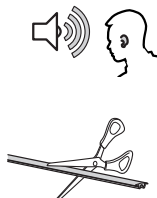
≈ 3 Nm

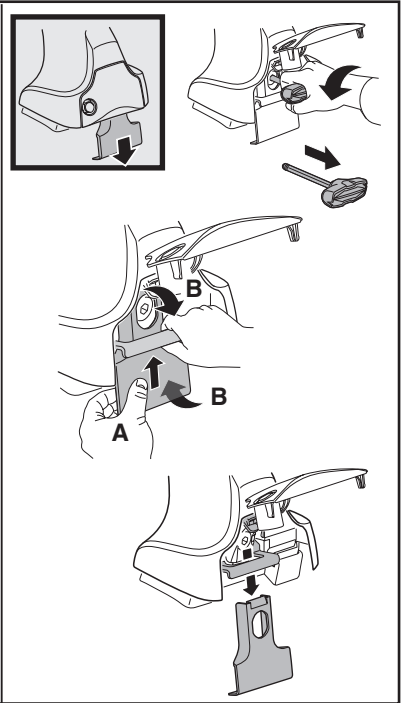
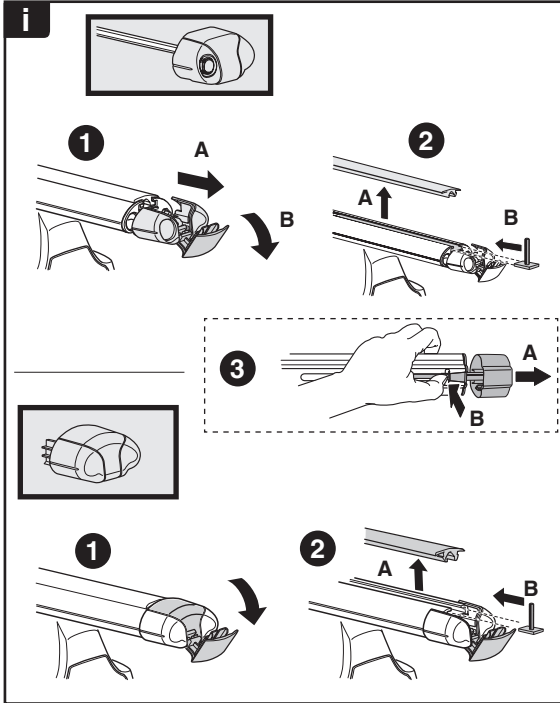
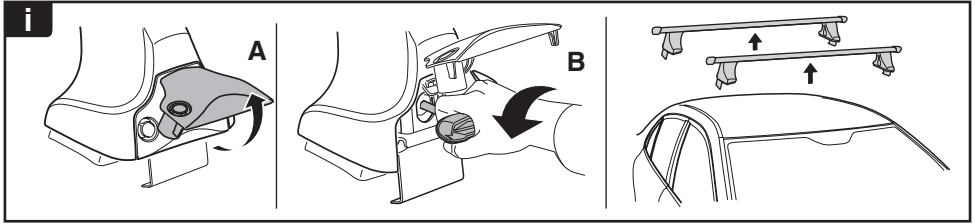


8

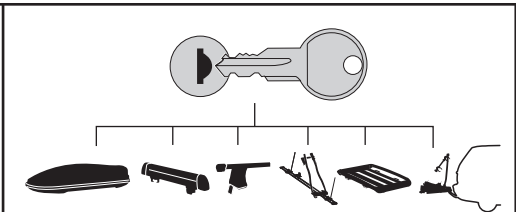


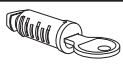



x1  
17 mm

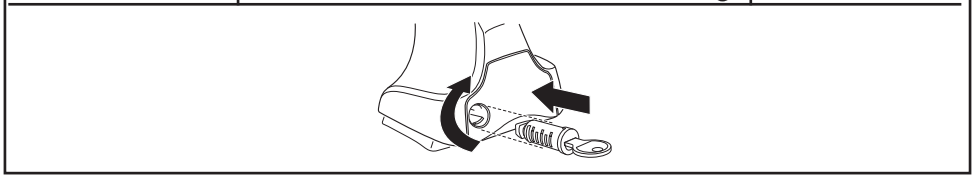




**THULE**  
SWEDEN  
**ONE  
KEY  
SYSTEM**



-  **544** (x4)
-  **596** (x6)
-  **588** (x8)
-  **510** (x10)
- NA** **510** (x10)
- EUR** **452** (x12)
- ASIA** **452** (x12)



**WW** ▶ Thule Sweden AB, Box 69, 330 33 Hillerstorp, SWEDEN  
**NA** ▶ Thule Inc., 42 Silvermine Road, Seymour, Connecticut 06483, USA

 [info@thule.com](mailto:info@thule.com)  
 [customer.service@thule.com](mailto:customer.service@thule.com)

 [www.thule.com](http://www.thule.com)