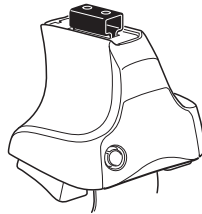
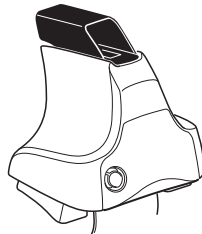
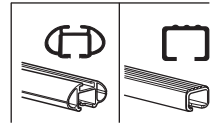


# Kit 1712

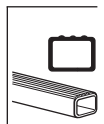
**SSANGYONG Korando Sports, 4-dr Double Cab, 12-**  
**SSANGYONG Korando Sports, 5-dr SUV, 12-**



**754** Rapid System  
**480R** Rapid Traverse (North America)



**480** Traverse (North America)

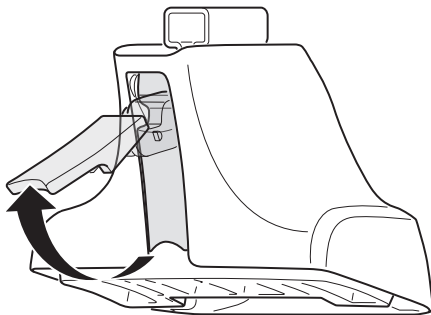


- 754 Rapid System: x1 (box), x4 (cubes), x4 (754 Rapid Traverse (North America) units), x4 (screws)
- 480R Rapid Traverse (North America): x1 (ruler), x4 (480R Rapid Traverse (North America) units), x4 (screws), x4 (cubes)
- 480 Traverse (North America): x1 (ruler), x4 (480 Traverse (North America) units), x4 (screws), x4 (cubes)

- Bar: x2
- Hardware: x2 (23 mm), x2 (23 mm), x4 (screws), x4 (screws)
- Hardware: x1 (17 mm), x2 (23 mm), x2 (23 mm), x4 (nuts)
- (North America): x2 (23 mm), x2 (23 mm), x2 (23 mm), x2 (cubes)

- Foot: 1260 x2
- Foot: 1261 x2
- Plate: 217 x4
- Diagram: x1 (FR, FL, RL, RR diagram)

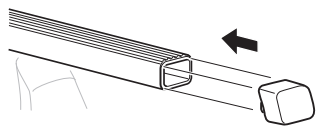
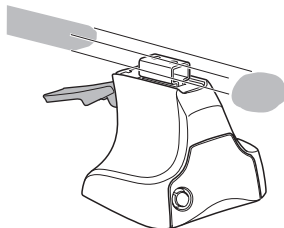
1



2



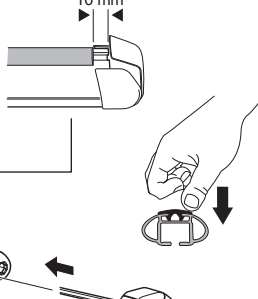
754 Rapid System  
480R Rapid Traverse  
(North America)



x4



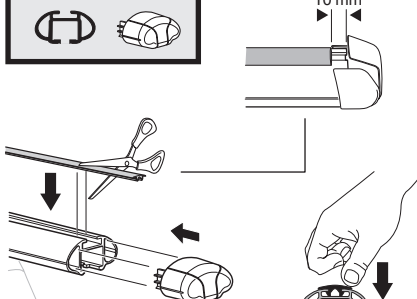
10 mm



x4



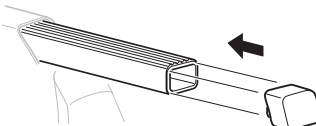
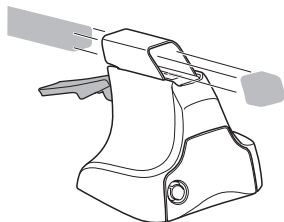
10 mm



x4

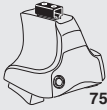


480 Traverse  
(North America)

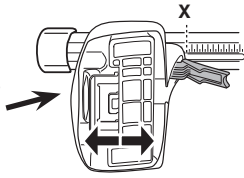


x4

**3**

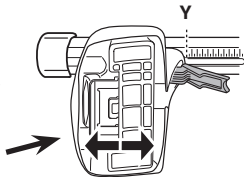


**754** Rapid System



**X**

<b>SSANGYONG Korando Sports, 4-dr Double Cab, 12-</b>	<b>48,5</b>
<b>SSANGYONG Korando Sports, 5-dr SUV, 12-</b>	<b>48,5</b>



**Y**

<b>SSANGYONG Korando Sports, 4-dr Double Cab, 12-</b>	<b>45</b>
<b>SSANGYONG Korando Sports, 5-dr SUV, 12-</b>	<b>45</b>

**3**



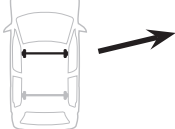
**480R** Rapid Traverse



**480** Traverse

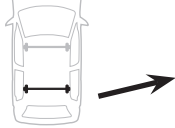


**(North America)**



**X inch      X mm**

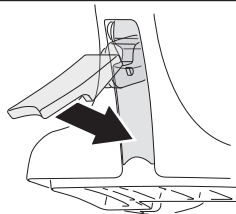
<b>SSANGYONG Korando Sports, 4-dr Double Cab, 12-</b>	<b>44 3/4"</b>	<b>1136 mm</b>
<b>SSANGYONG Korando Sports, 5-dr SUV, 12-</b>	<b>44 3/4"</b>	<b>1136 mm</b>



**Y inch      Y mm**

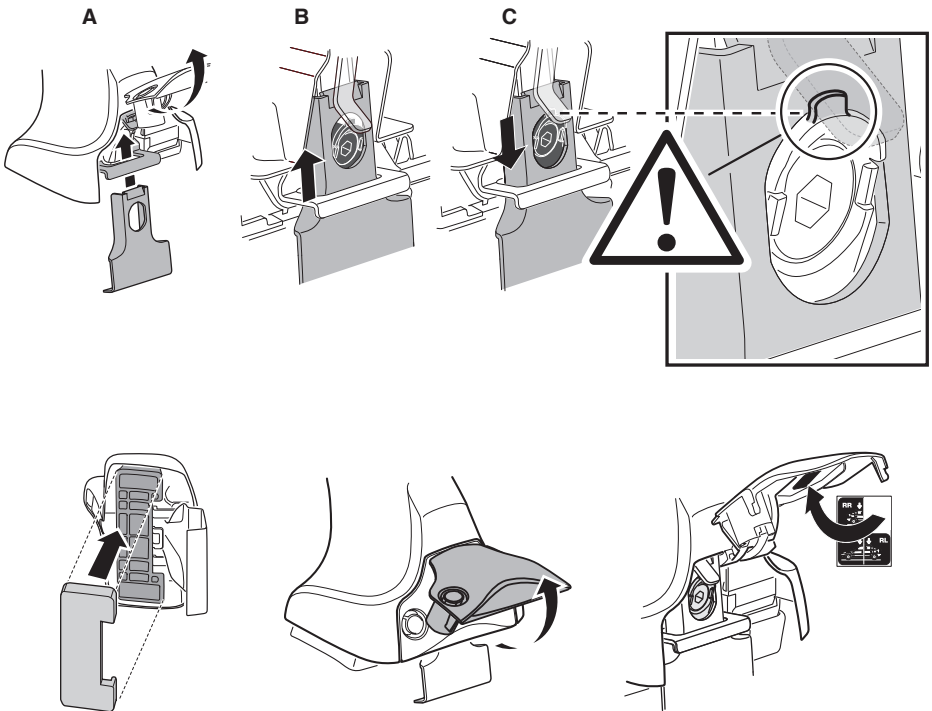
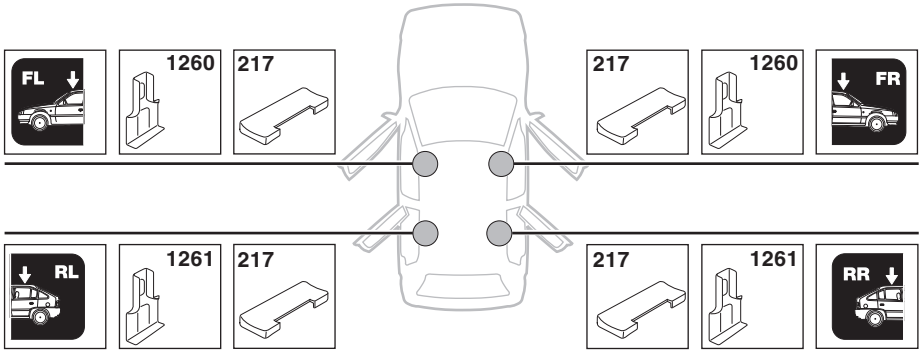
<b>SSANGYONG Korando Sports, 4-dr Double Cab, 12-</b>	<b>43 3/8"</b>	<b>1101 mm</b>
<b>SSANGYONG Korando Sports, 5-dr SUV, 12-</b>	<b>43 3/8"</b>	<b>1101 mm</b>

**4**

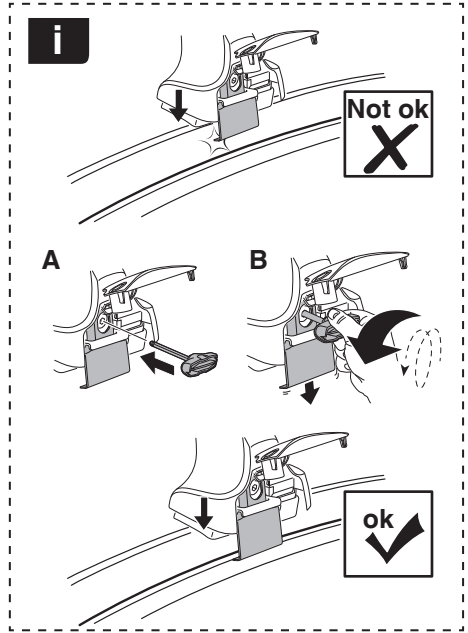
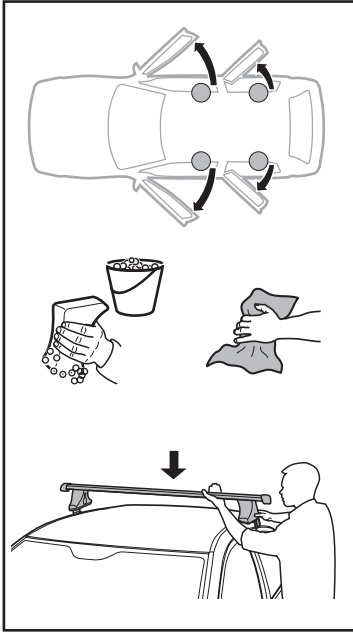


# 5

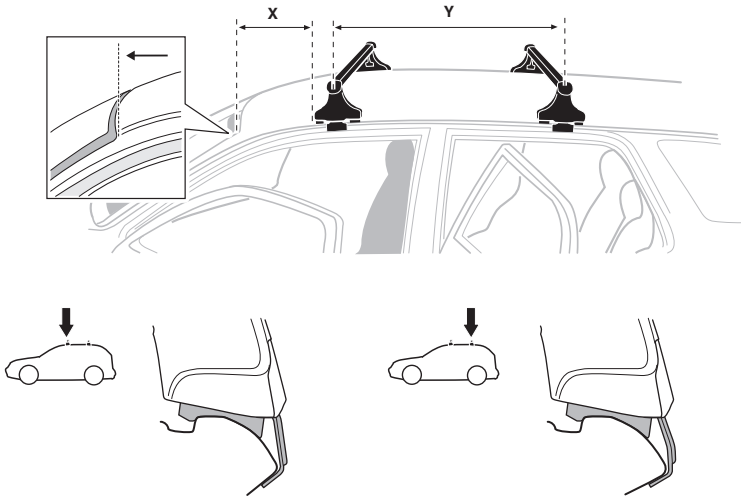
SSANGYONG Korando Sports, 4-dr Double Cab, 12-  
 SSANGYONG Korando Sports, 5-dr SUV, 12-



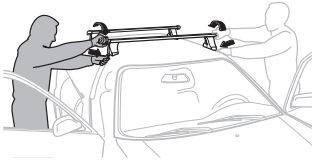
6



	X mm	Y mm	X inch	Y inch
SSANGYONG Korando Sports, 4-dr Double Cab, 12-	270 mm	700 mm	10 <sup>5</sup> / <sub>8</sub> "	27 <sup>1</sup> / <sub>2</sub> "
SSANGYONG Korando Sports, 5-dr SUV, 12-	270 mm	700 mm	10 <sup>5</sup> / <sub>8</sub> "	27 <sup>1</sup> / <sub>2</sub> "



7



<b>GB/US</b>	Tighten alternately
<b>D</b>	Die Schrauben abwechselnd anziehen
<b>F</b>	Serrer alternativement chaque côté
<b>NL</b>	Afwisselend aan de linker- en de rechterkant aandraaien
<b>I</b>	Alternare il serraggio delle viti
<b>E</b>	Apretar alternativamente
<b>PT</b>	Aperte alternadamente
<b>S</b>	Dra åt växelvis
<b>FIN</b>	Kierrä vuorotellen
<b>EST</b>	Pinguldage vaheldumisi
<b>LAT</b>	Pielveiciet pamišus
<b>LIT</b>	Užsukinėkite pakaitomis
<b>PL</b>	Śruby dokręcaj naprzemiennie
<b>RU</b>	Загтягивайте попеременно

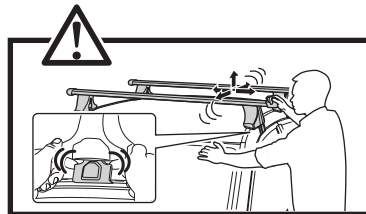
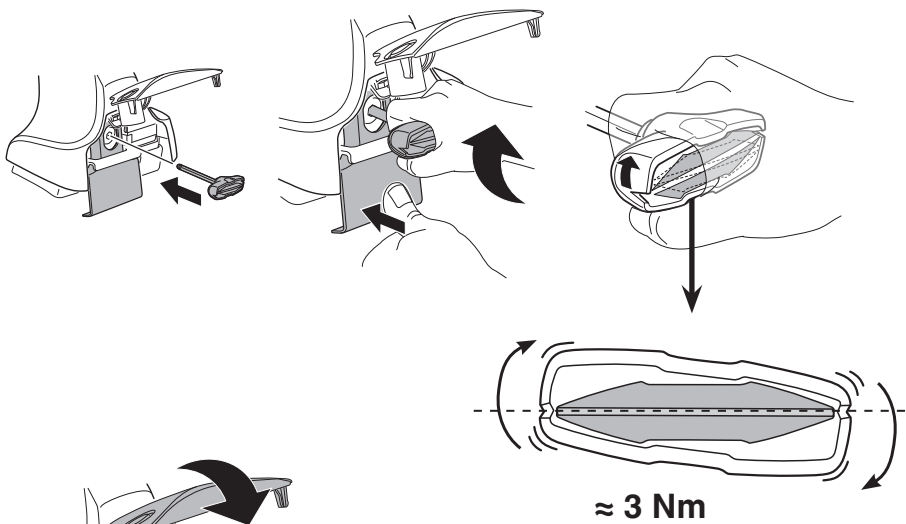
<b>CZ</b>	Pokręťta багаžnika dokręcaj naprzemiennie.
<b>SK</b>	Dofahajte striedavo
<b>SLO</b>	Privijajte izmenično.
<b>HR</b>	Naizmjenočno zategnite
<b>HU</b>	Egymástól függetlenül szorítandó
<b>GR</b>	Σφιγγείτε εναλλάξ
<b>TR</b>	Dönüşümlü sıkın

**中文** 交替拧紧

**한국어** 번갈아 가며 조이십시오.

**日本語** 交互に締め付けてください。

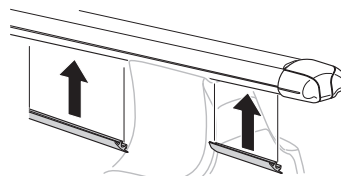
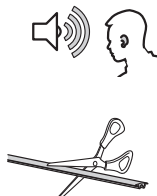
**ไทย** ชันในแบบสลับ

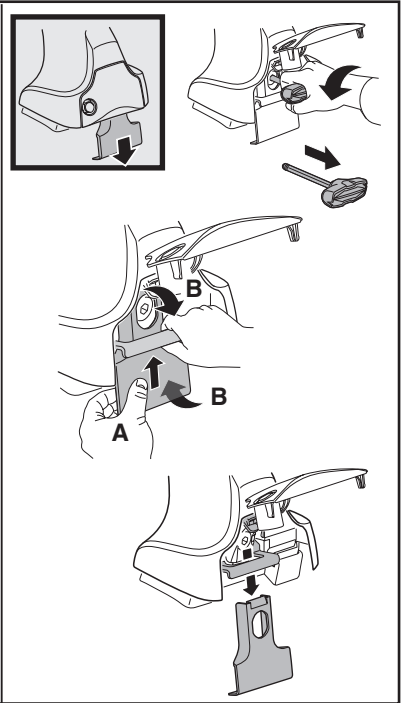
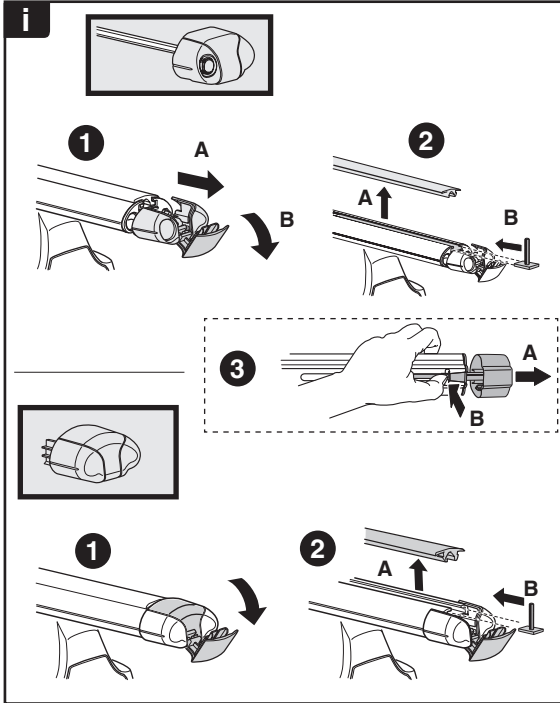
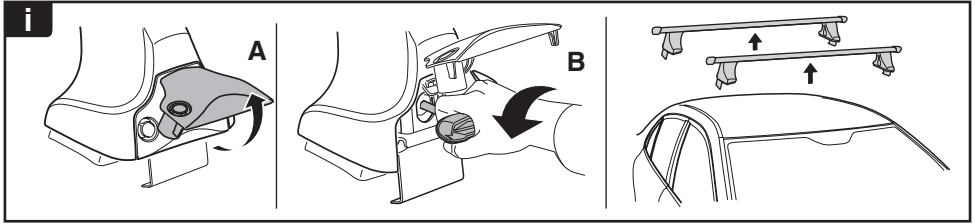


8

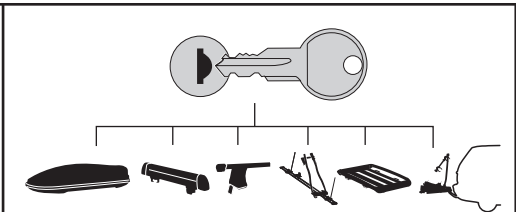


**x1**  
17 mm

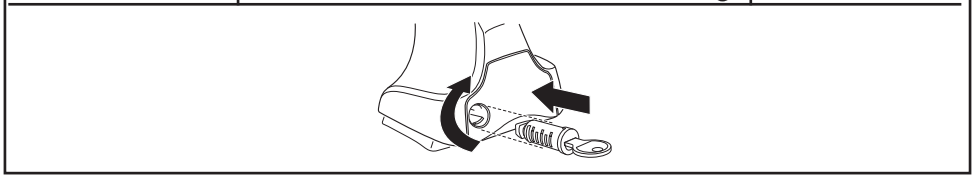




**THULE**  
SWEDEN  
**ONE  
KEY  
SYSTEM**



		(x4)
		(x6)
		(x8)
NA		(x10)
EUR		(x12)
ASIA		



WW ▶ Thule Sweden AB, Box 69, 330 33 Hillerstorp, SWEDEN  
NA ▶ Thule Inc., 42 Silvermine Road, Seymour, Connecticut 06483, USA

info@thule.com  
customer.service@thule.com

www.thule.com