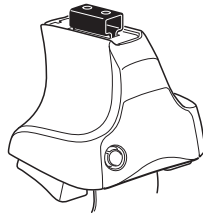
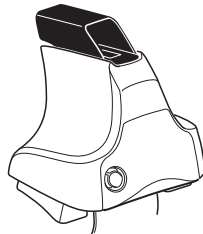
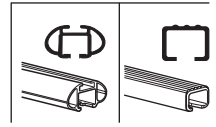


# Kit 1705

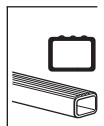
NISSAN Versa, 4-dr Sedan, 12-



754 Rapid System  
480R Rapid Traverse (North America)



480 Traverse (North America)



**754 Rapid System**  
**480R Rapid Traverse (North America)**

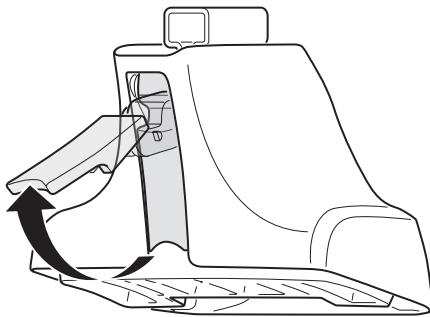
---

**754 Rapid System**  
**480R Rapid Traverse (North America)**  
**480 Traverse (North America)**

**(North America)**

**301 x 2**  
**1262 x 2**  
**237 x 2**  
**238 x 2**  
**x 1**

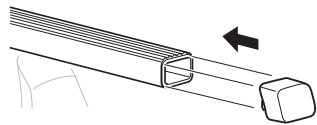
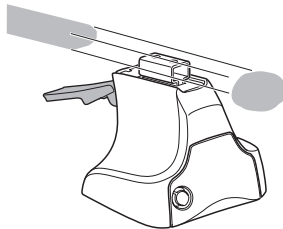
1



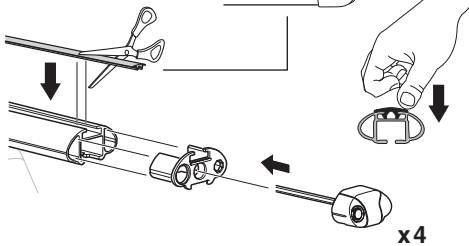
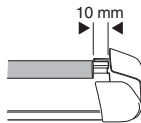
2



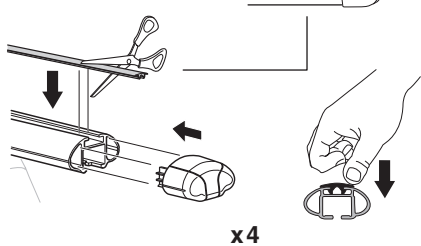
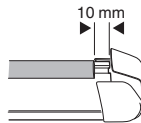
754 Rapid System  
480R Rapid Traverse  
(North America)



x4



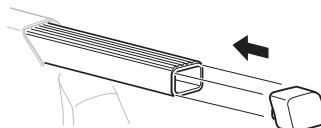
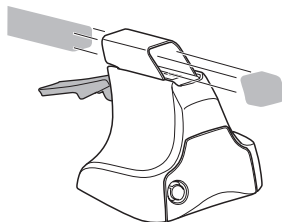
x4



x4

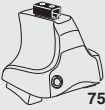


480 Traverse  
(North America)

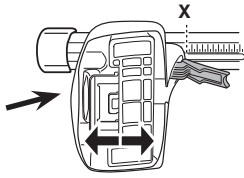


x4

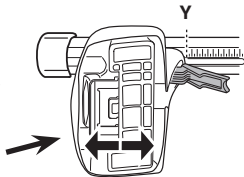
**3**



**754** Rapid System



	<b>X</b>
<b>NISSAN Versa, 4-dr Sedan, 12-</b>	<b>25</b>



	<b>Y</b>
<b>NISSAN Versa, 4-dr Sedan, 12-</b>	<b>26</b>

**3**

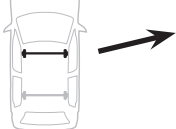


**480R** Rapid Traverse

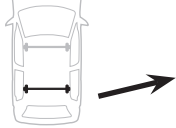


**480** Traverse

**(North America)**

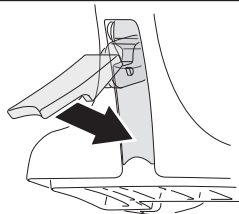


	<b>X inch</b>	<b>X mm</b>
<b>NISSAN Versa, 4-dr Sedan, 12-</b>	<b>35 1/2"</b>	<b>901 mm</b>



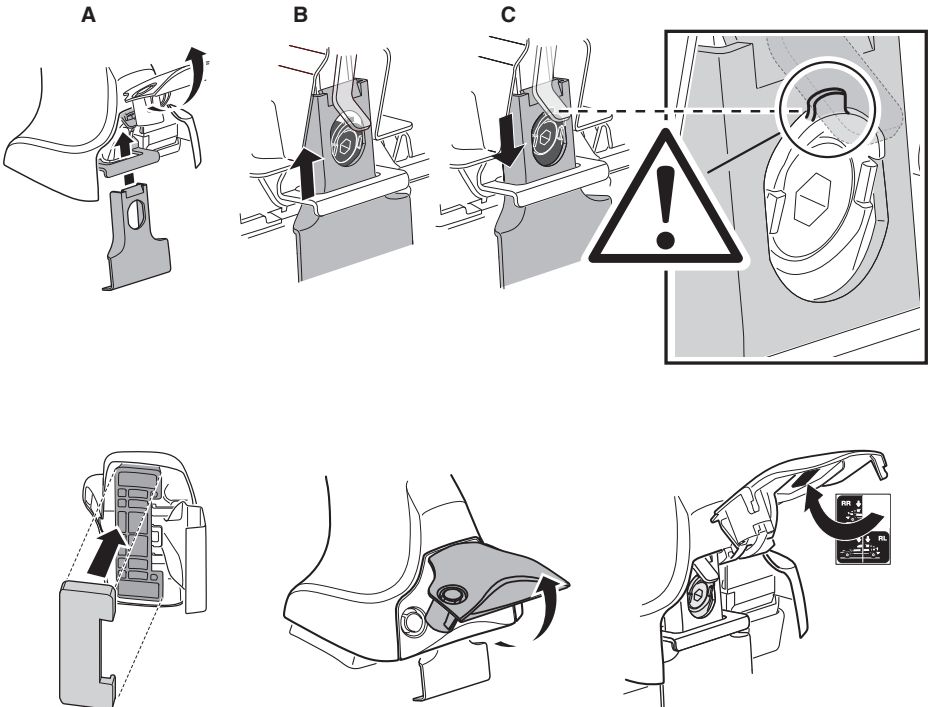
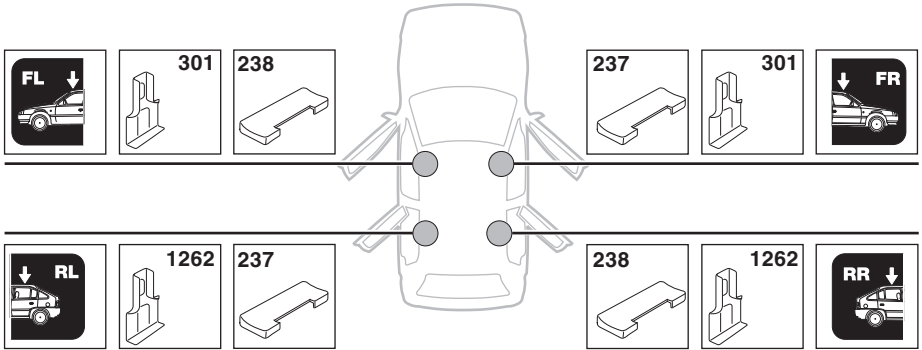
	<b>Y inch</b>	<b>Y mm</b>
<b>NISSAN Versa, 4-dr Sedan, 12-</b>	<b>35 7/8"</b>	<b>911 mm</b>

**4**

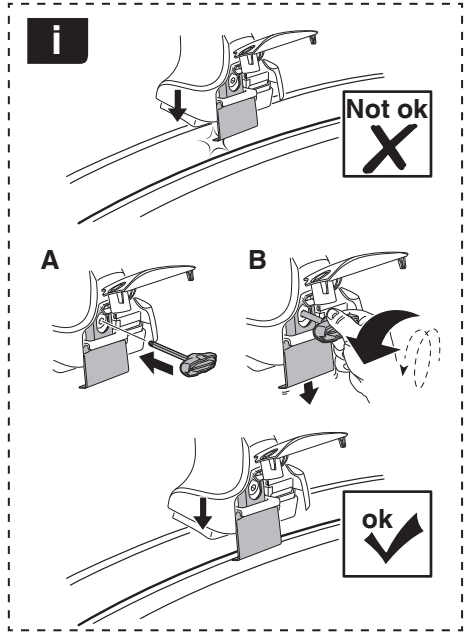
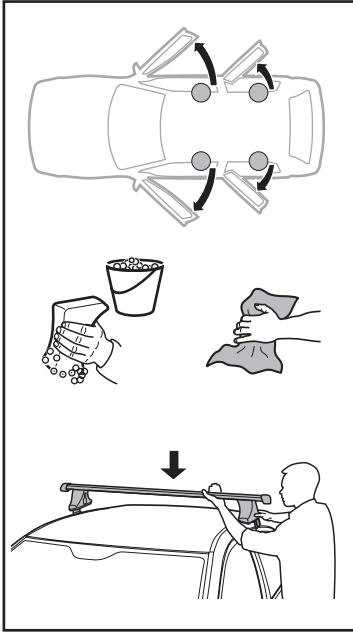


# 5

NISSAN Versa, 4-dr Sedan, 12-

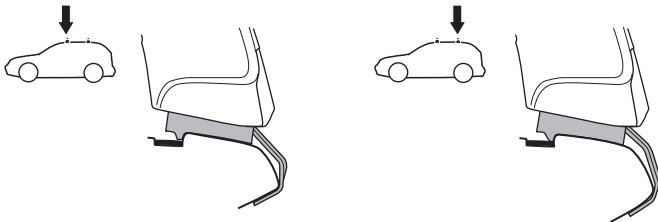
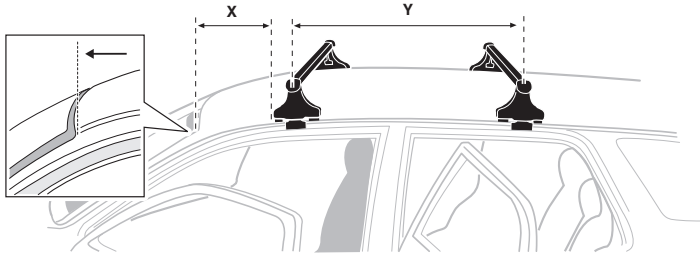


6

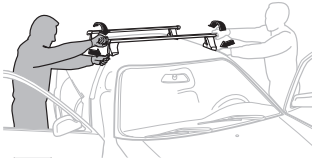


NISSAN Versa, 4-dr Sedan, 12-

X mm	Y mm	X inch	Y inch
300 mm	600 mm	11 3/4"	23 5/8"



7



GB/US	Tighten alternately
D	Die Schrauben abwechselnd anziehen
F	Serrer alternativement chaque côté
NL	Afwisselend aan de linker- en de rechterkant aandraaien
I	Alternare il serraggio delle viti
E	Apretar alternativamente
PT	Aperte alternadamente
S	Dra åt växelvis
FIN	Kierrä vuorotellen
EST	Pinguldage vaheldumisi
LAT	Pielveiciet pamīšus
LIT	Užsukinėkite pakaitomis
PL	Śruby dokręcaj naprzemiennie
RU	Затягивайте попеременно

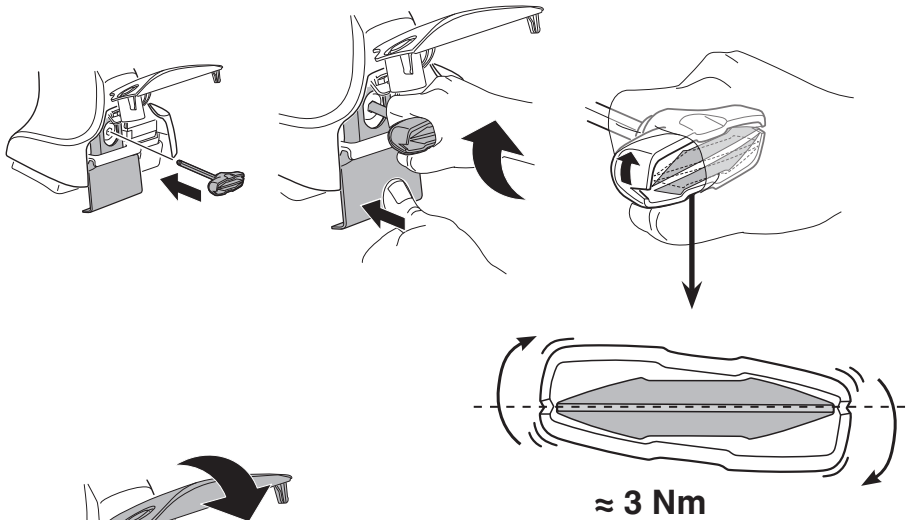
CZ	Pokręťta bagażníka dokręcaj naprzemiennie.
SK	Dofahajte striedavo
SLO	Privijajte izmenično.
HR	Naizmjenočno zategnite
HU	Egymástól függetlenül szorítandó
GR	Σφιγγείτε εναλλάξ
TR	Dönüşümlü sıkın

中文 交替拧紧

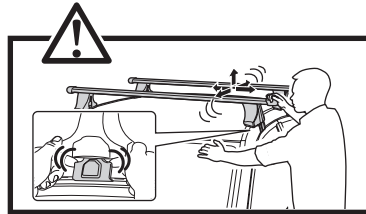
한국어 번갈아 가며 조이십시오.

日本語 交互に締め付けてください。

ไทย ชันในแบบสลับ



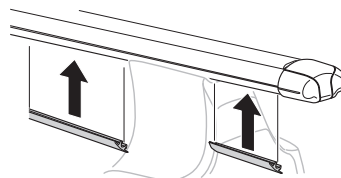
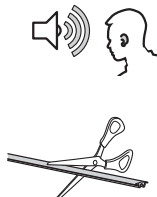
≈ 3 Nm

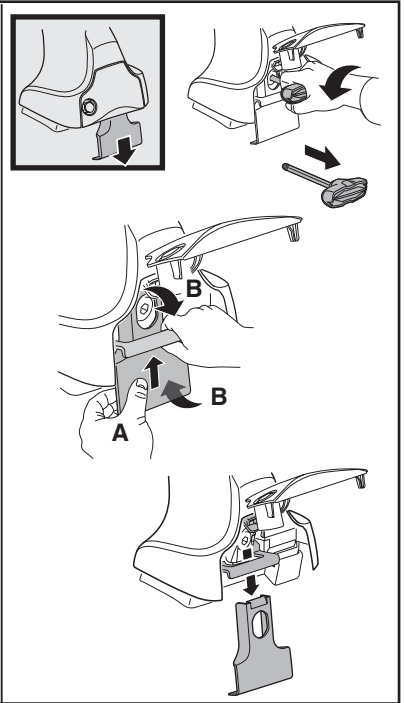
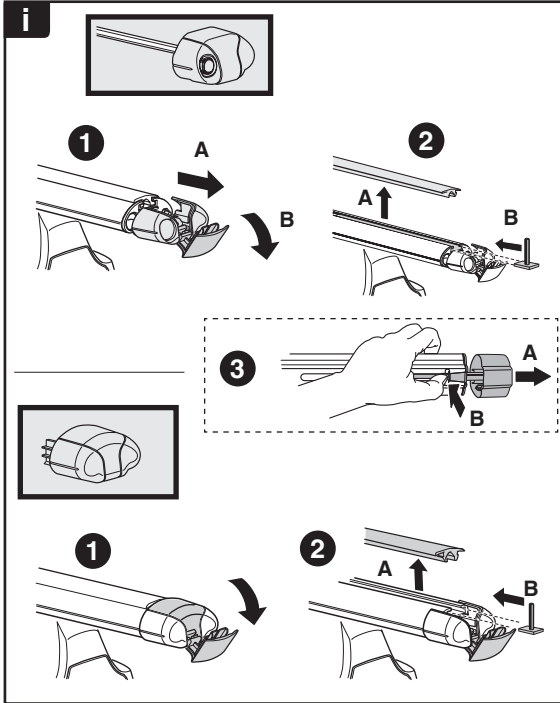
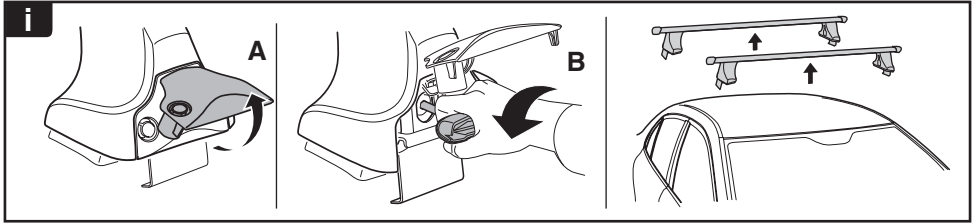


8



x1  
17 mm





**THULE**  
SWEDEN  
**ONE  
KEY  
SYSTEM**



		(x4)
		(x6)
		(x8)
NA		(x10)
EUR		(x12)
ASIA		



WW ▶ Thule Sweden AB, Box 69, 330 33 Hillerstorp, SWEDEN  
NA ▶ Thule Inc., 42 Silvermine Road, Seymour, Connecticut 06483, USA

info@thule.com  
customer.service@thule.com

www.thule.com