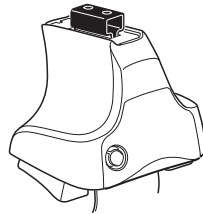
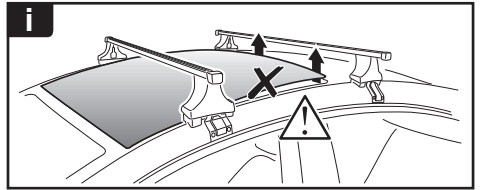
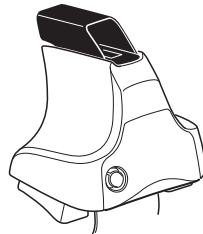
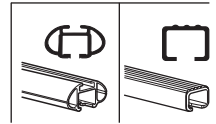


Kit 1695

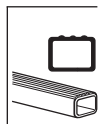
HYUNDAI i30, 5-dr Hatchback, 12- (With glassroof)



754 Rapid System
480R Rapid Traverse (North America)



480 Traverse (North America)



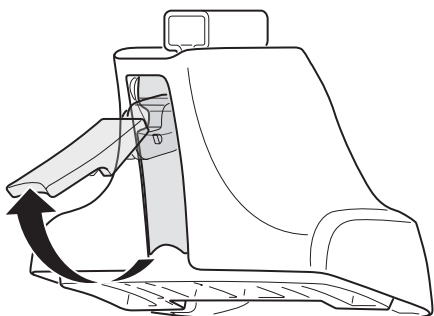
754 Rapid System
480R Rapid Traverse (North America)

480 Traverse (North America)

(North America)

x2	x2 23 mm	x1 17 mm	x2 23 mm	x2
x2	x2 23 mm	x2 23 mm	x2	x2
x4	x4	x2	x2	

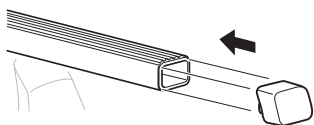
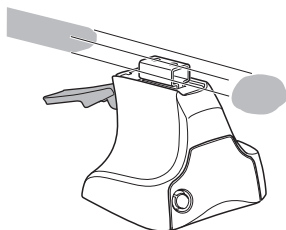
1



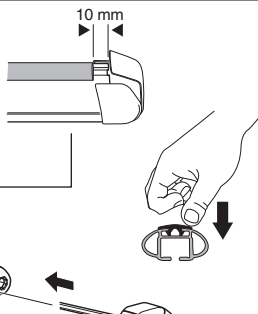
2



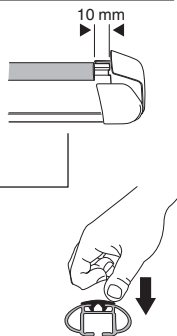
754 Rapid System
480R Rapid Traverse
(North America)



x4



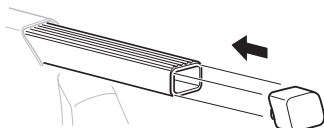
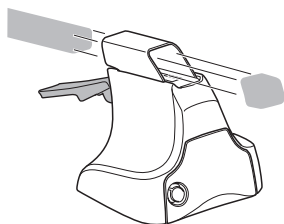
x4



x4

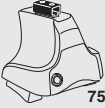


480 Traverse
(North America)

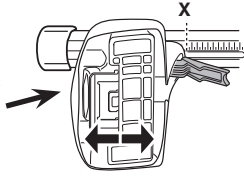


x4

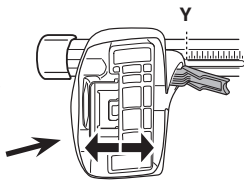
3



754 Rapid System



	X
HYUNDAI i30, 5-dr Hatchback, 12- (With glassroof)	40



	Y
HYUNDAI i30, 5-dr Hatchback, 12- (With glassroof)	35,5

3



480R Rapid Traverse



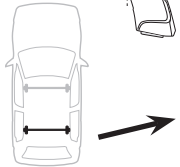
480 Traverse



(North America)

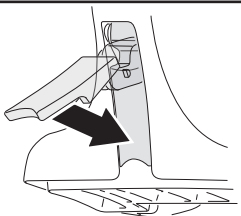


	X inch	X mm
HYUNDAI i30, 5-dr Hatchback, 12- (With glassroof)	41 ³ / ₈ "	1051 mm



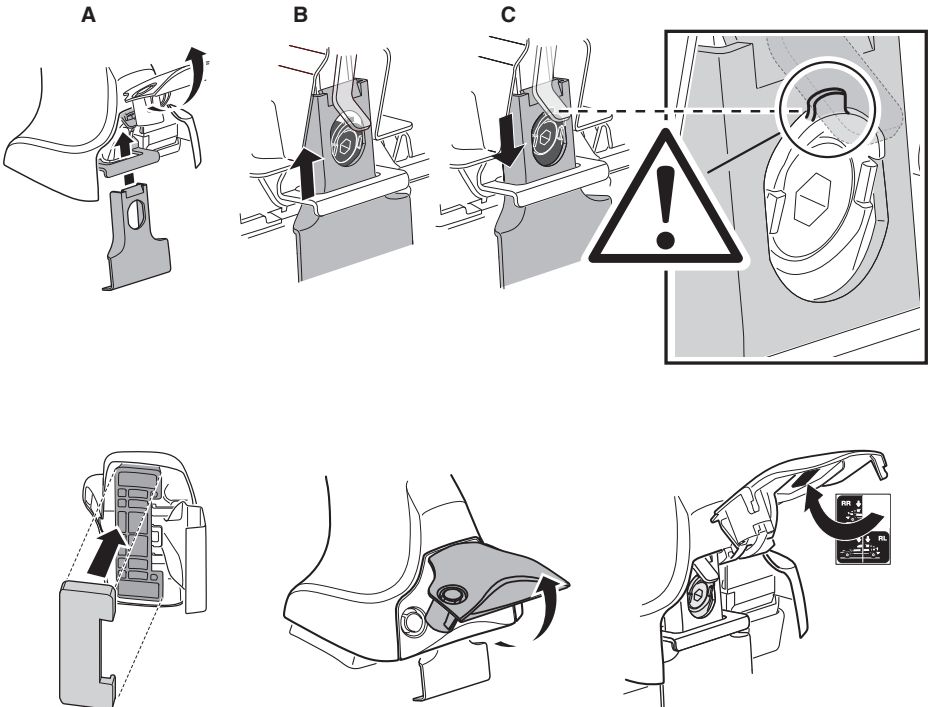
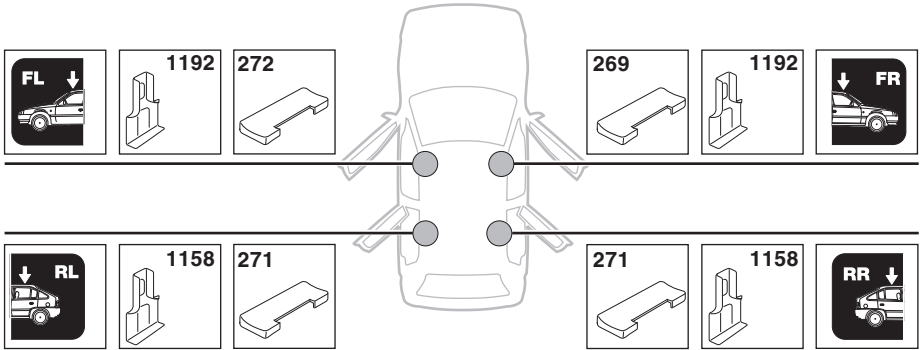
	Y inch	Y mm
HYUNDAI i30, 5-dr Hatchback, 12- (With glassroof)	39 ⁵ / ₈ "	1006 mm

4

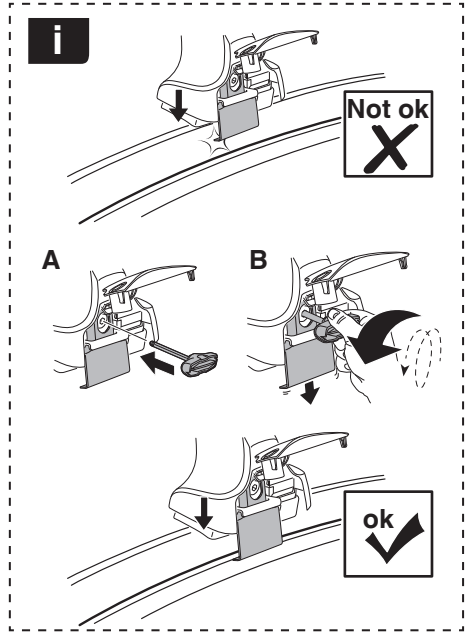
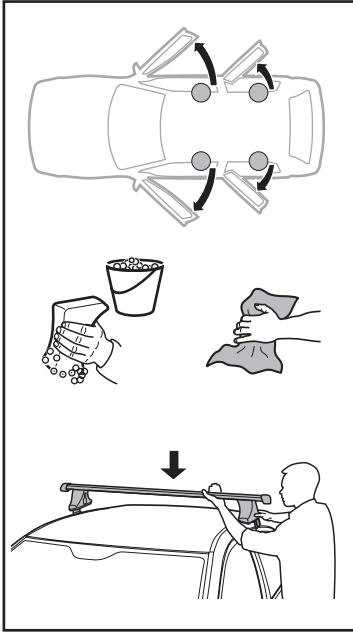


5

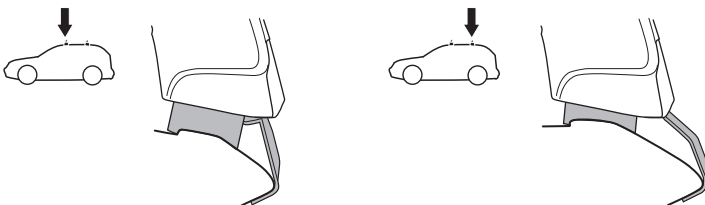
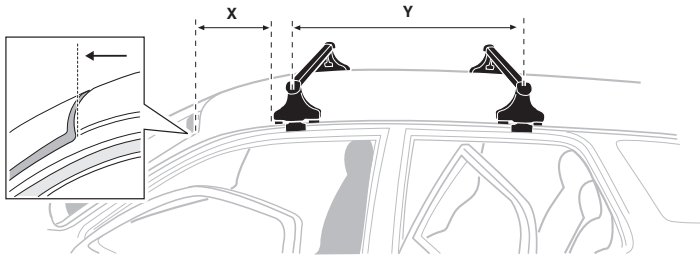
HYUNDAI i30, 5-dr Hatchback, 12- (With glassroof)



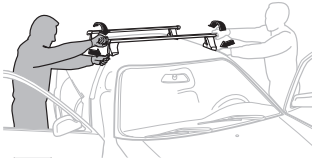
6



	X mm	Y mm	X inch	Y inch
HYUNDAI i30, 5-dr Hatchback, 12- (With glassroof)	180 mm	700 mm	7 1/8"	27 1/2"



7



GB/US Tighten alternately
 D Die Schrauben abwechselnd anziehen
 F Serrer alternativement chaque côté
 NL Afwisselend aan de linker- en de rechterkant aandraaien
 I Alternare il serraggio delle viti
 E Apretar alternativamente
 PT Aperte alternadamente
 S Dra åt växelvis
 FIN Kierrä vuorotellen
 EST Pinguldage vaheldumisi
 LAT Pievelciēt pamīšus
 LIT Užsukinėkite pakaitomis
 PL Śruby dokręcaj naprzemiennie
 RU Затягивайте попеременно

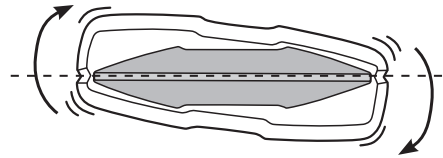
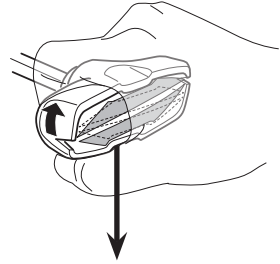
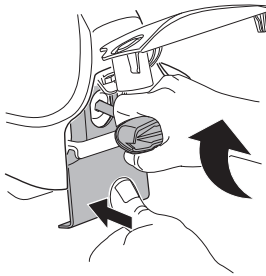
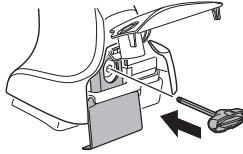
CZ Pokręťta bagażnika dokręcaj dokręcaj naprzemiennie.
 SK Dofahajte striedavo
 SLO Privijajte izmenično.
 HR Naizmjenočno zategnite
 HU Egymástól függetlenül szorítandó
 GR Σφιγγετε εναλλάξ
 TR Dönüşümlü sıkın

中文 交替拧紧

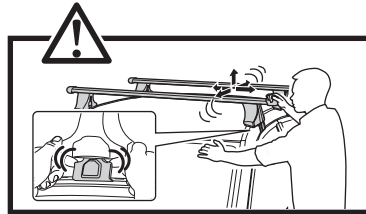
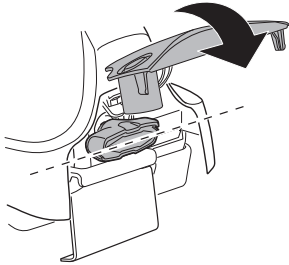
한국어 번갈아 가며 조이십시오.

日本語 交互に締め付けてください。

ไทย ชั้นในแบบสลับ



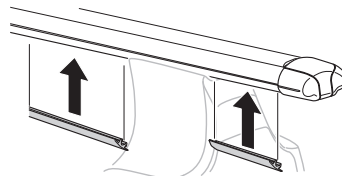
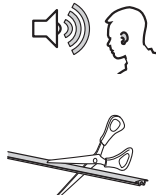
≈ 3 Nm

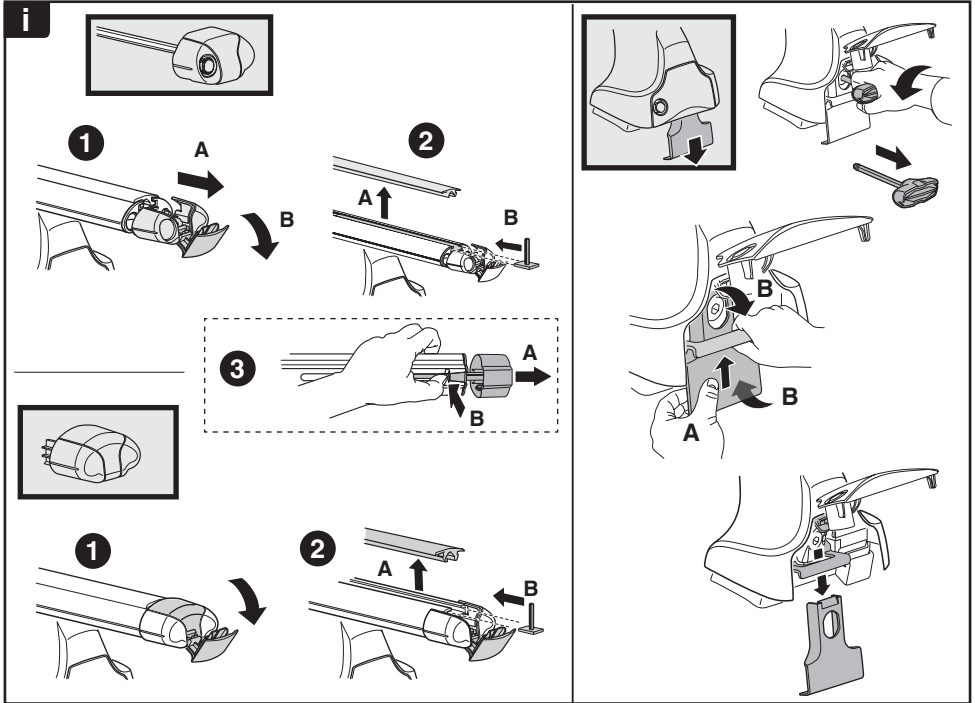
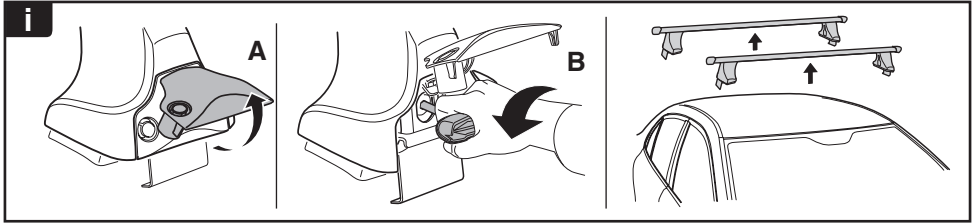


8



x1
17 mm





THULE
SWEDEN

**ONE
KEY
SYSTEM**

544 (x4)

596 (x6)

588 (x8)

NA 510 (x10)

EUR 452 (x12)

ASIA