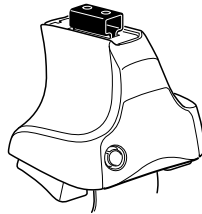
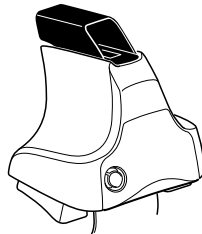


# Kit 1692

FORD Fusion, 4-dr Sedan, 13-



**754** Rapid System  
**480R** Rapid Traverse (North America)



**480** Traverse (North America)



xx kg  
 xx lbs + 7 kg  
 15,4 lbs = **Max. 50 kg**  
**Max. 110 lbs**

80 km/h 50 Mph | 130 km/h 80 Mph  
 40 km/h 25 Mph

km/h Mph

+ Kit XXXX

instructions

THULE

x1 x4  
**754 Rapid System**

x4 x4  
**480R Rapid Traverse (North America)**

**754 Rapid System**  
**480R Rapid Traverse (North America)**

---

x1 x4 x4  
**480 Traverse (North America)**

(North America)

x2 x2 x1 x2 x2  
 23 mm 17 mm 23 mm

x4 x2 x2  
 x4 x4

**733 x 4**

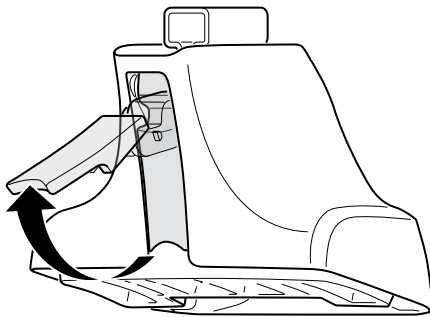
**182 x 2**

**266 x 1**

**267 x 1**

**x 1**

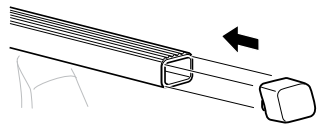
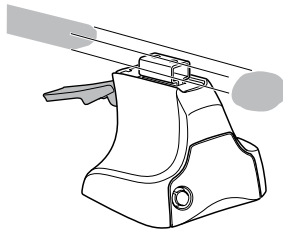
1



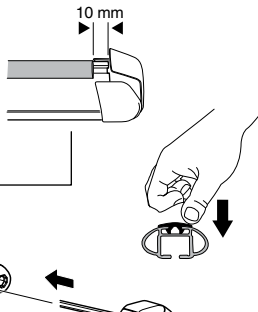
2



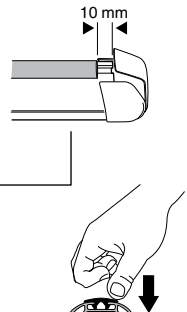
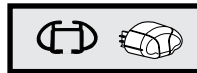
754 Rapid System  
480R Rapid Traverse  
(North America)



x4



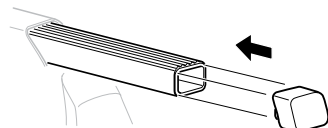
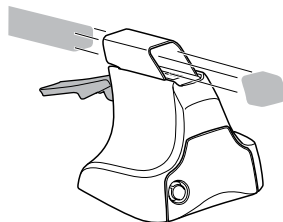
x4



x4



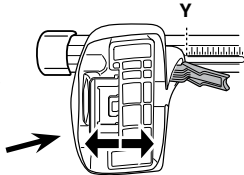
480 Traverse  
(North America)



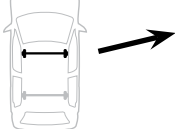
x4

**3****754** Rapid System

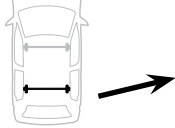
	<b>X</b>
<b>FORD Fusion, 4-dr Sedan, 13-</b>	<b>47,5</b>



	<b>Y</b>
<b>FORD Fusion, 4-dr Sedan, 13-</b>	<b>46,5</b>

**3****480R** Rapid Traverse**480** Traverse**(North America)**

	<b>X inch</b>	<b>X mm</b>
<b>FORD Fusion, 4-dr Sedan, 13-</b>	<b>44 <sup>3</sup>/<sub>8</sub>"</b>	<b>1126 mm</b>

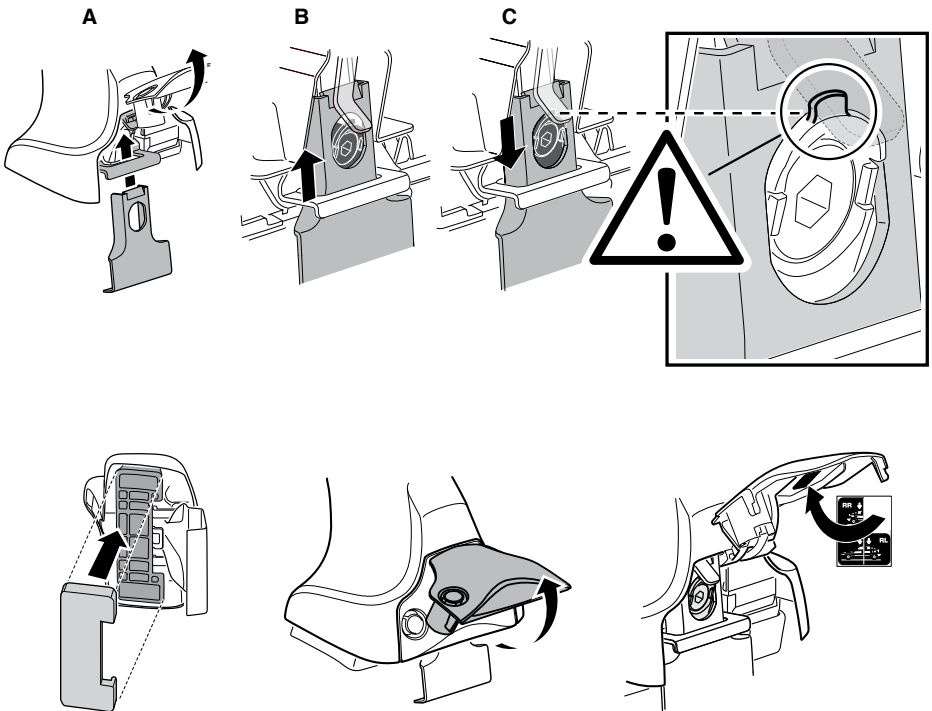
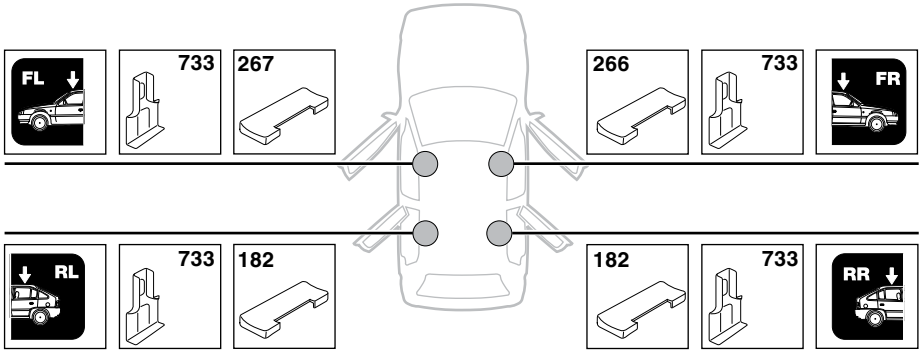


	<b>Y inch</b>	<b>Y mm</b>
<b>FORD Fusion, 4-dr Sedan, 13-</b>	<b>43 <sup>7</sup>/<sub>8</sub>"</b>	<b>1116 mm</b>

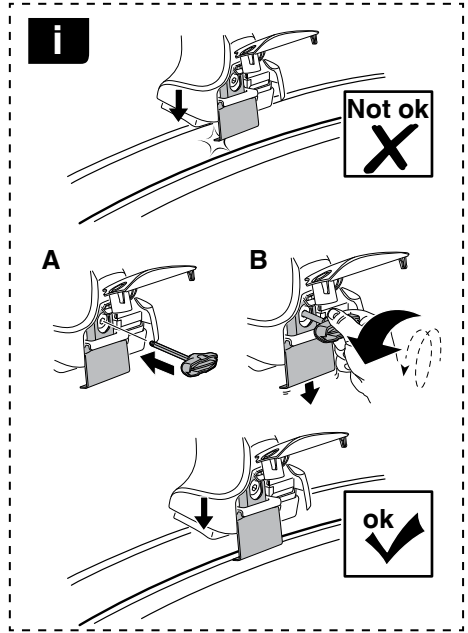
**4**

# 5

FORD Fusion, 4-dr Sedan, 13-

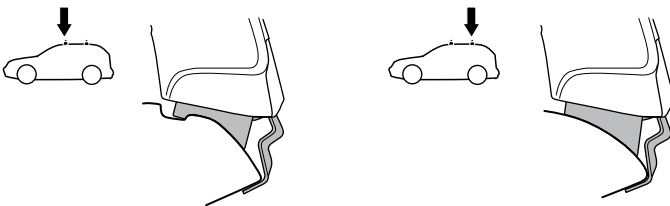
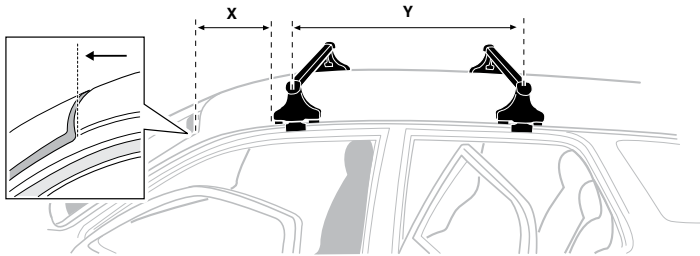


6



FORD Fusion, 4-dr Sedan, 13-

X mm	Y mm	X inch	Y inch
279 mm	635 mm	11"	25"



7



GB/US Tighten alternately  
 D Die Schrauben abwechselnd anziehen  
 F Serrer alternativement chaque côté  
 NL Afwisselend aan de linker- en de rechterkant aandraaien  
 I Alternare il serraggio delle viti  
 E Apertar alternativamente  
 PT Aperte alternadamente  
 S Dra åt växelvis  
 FIN Kierrä vuorotellen  
 EST Pinguldage vaheldumisi  
 LAT Pieļieciet pamišus  
 LIT Užsukinėkite pakaitomis  
 PL Śruby dokręcaj naprzemiennie  
 RU Затягивайте попеременно

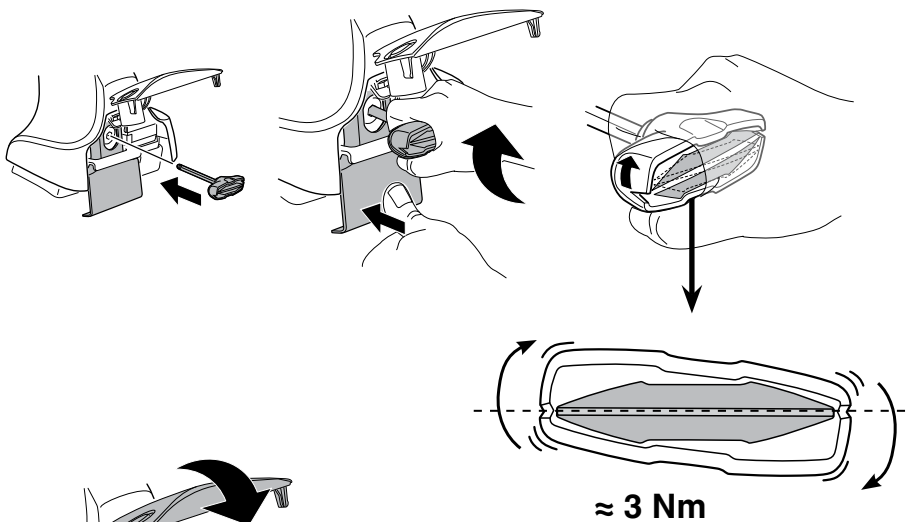
CZ Pokręťta bagażnika dokręcaj dokręcaj naprzemiennie.  
 SK Dofahajte striedavo  
 SLO Privijajte izmenično.  
 HR Naizmjerno zategnite  
 HU Egymástól függetlenül szorítandó  
 GR Σφιγίγτες εναλλάξ  
 TR Dönüşümlü sıkın

中文 交替拧紧

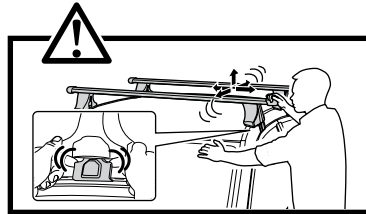
한국어 번갈아 가며 조이십시오.

日本語 交互に締め付けてください。

ไทย ชันในแบบสลับ



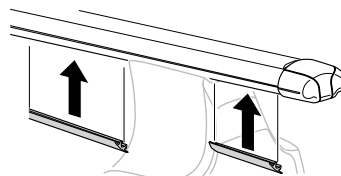
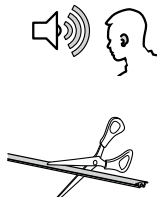
≈ 3 Nm

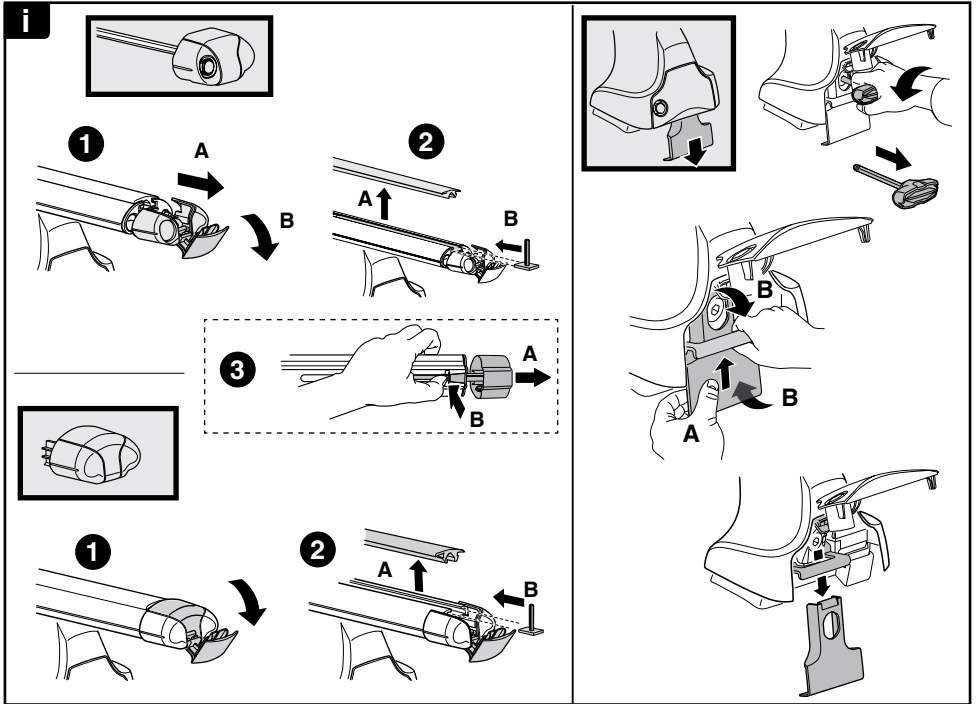
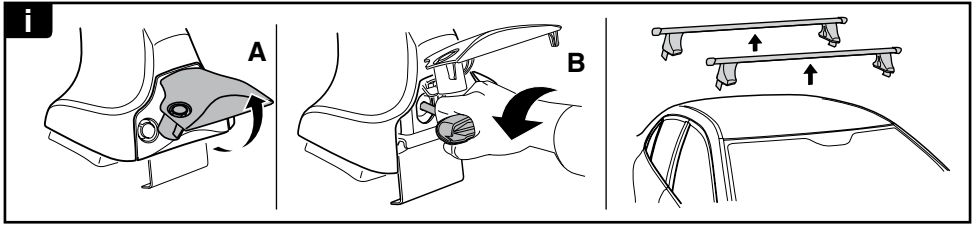


8

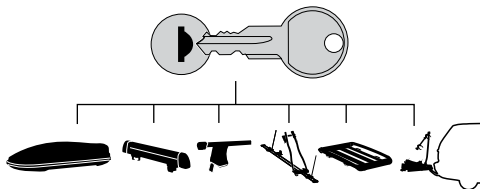


x1  
17 mm





**THULE**  
SWEDEN  
**ONE  
KEY  
SYSTEM**



**544** (x4)

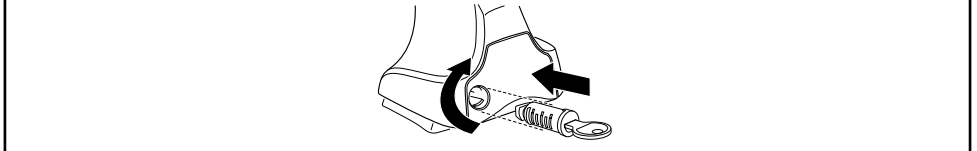
**596** (x6)

**588** (x8)

NA **510** (x10)

EUR **452** (x12)

ASIA



WW ▶ Thule Sweden AB, Box 69, 330 33 Hillerstorp, SWEDEN  
NA ▶ Thule Inc., 42 Silvermine Road, Seymour, Connecticut 06483, USA

info@thule.com  
customer.service@thule.com

www.thule.com

503-1692-01