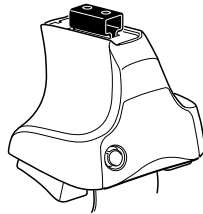


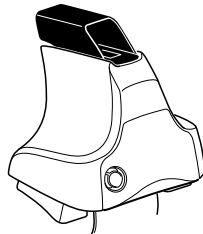
# Kit 1669

**VOLKSWAGEN Passat, 4-dr Sedan, \*12-**

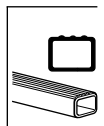
\*North America



**754** Rapid System  
**480R** Rapid Traverse (North America)



**480** Traverse (North America)



**754 Rapid System**  
**480R Rapid Traverse (North America)**

**754 Rapid System**  
**480R Rapid Traverse (North America)**  
**480 Traverse (North America)**

**(North America)**

**1202 x1**  
**1203 x1**  
**1204 x1**  
**1205 x1**

**163 x2**  
**164 x2**  
**50993 x2**

**FR**  
**FL**  
**RL**  
**RR**  
**x1**

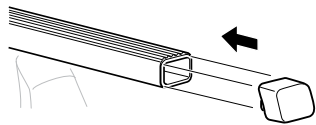
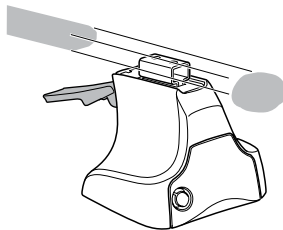
1



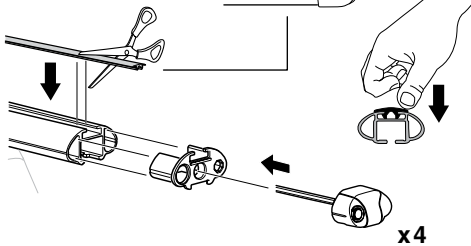
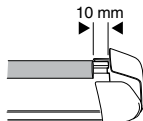
2



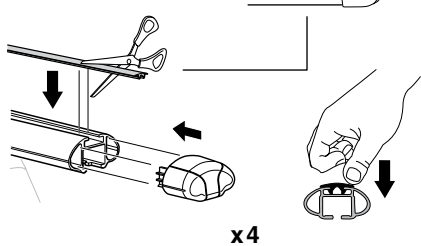
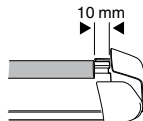
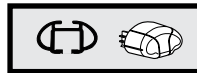
754 Rapid System  
480R Rapid Traverse  
(North America)



x4



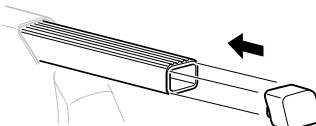
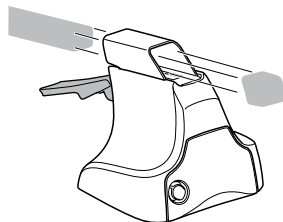
x4



x4



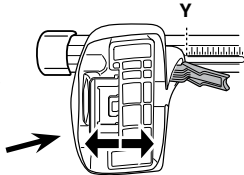
480 Traverse  
(North America)



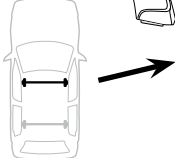
x4

**3****754** Rapid System

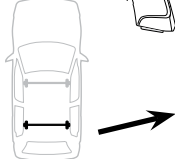
	<b>X</b>
<b>VOLKSWAGEN Passat, 4-dr Sedan, *12-</b>	<b>44</b>



	<b>Y</b>
<b>VOLKSWAGEN Passat, 4-dr Sedan, *12-</b>	<b>39,5</b>

**3****480R** Rapid Traverse**480** Traverse**(North America)**

	<b>X inch</b>	<b>X mm</b>
<b>VOLKSWAGEN Passat, 4-dr Sedan, *12-</b>	<b>43 "</b>	<b>1091 mm</b>

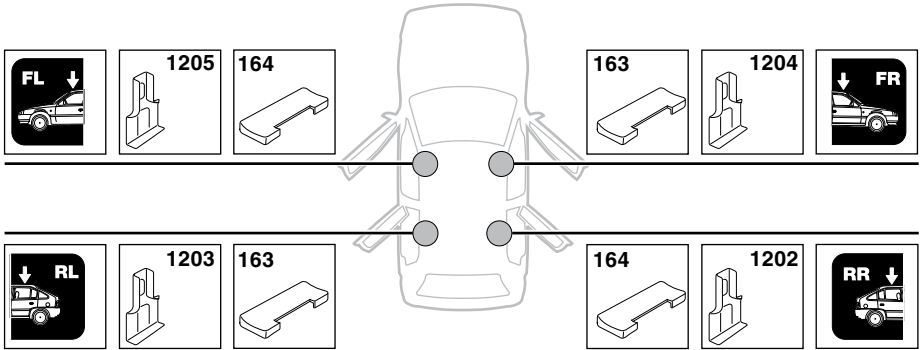


	<b>Y inch</b>	<b>Y mm</b>
<b>VOLKSWAGEN Passat, 4-dr Sedan, *12-</b>	<b>41 "</b>	<b>1046 mm</b>

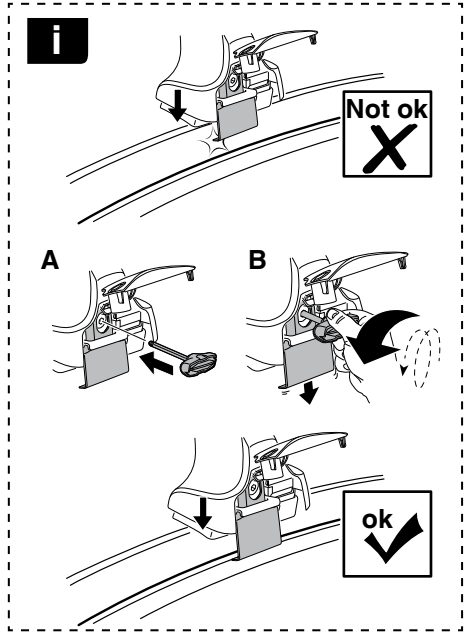
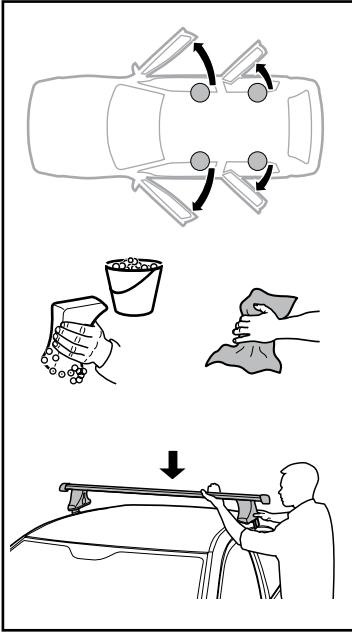
**4**

5

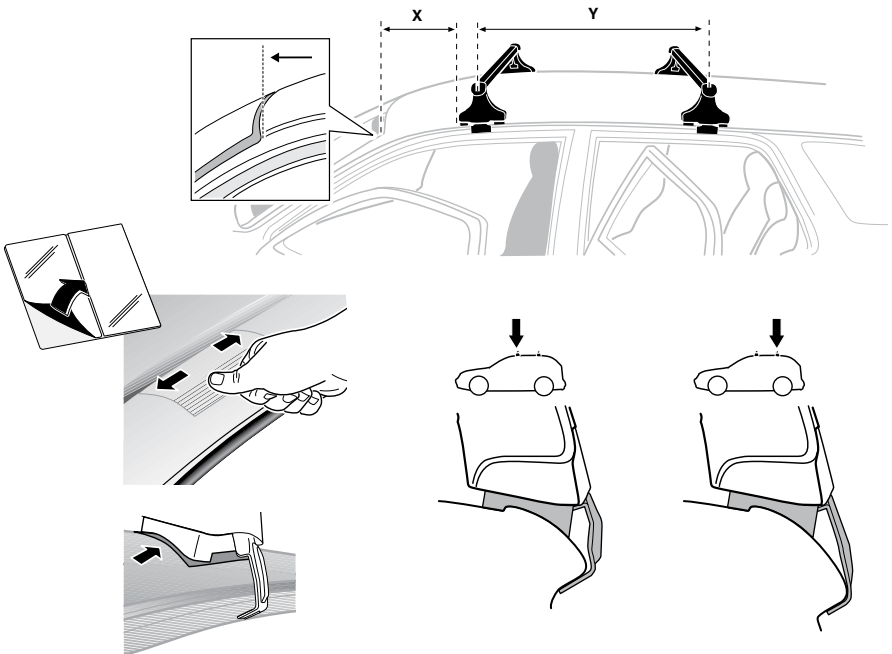
VOLKSWAGEN Passat, 4-dr Sedan, \*12-

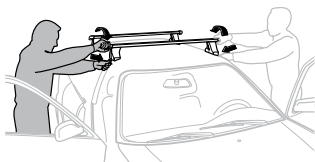


6



	X mm	Y mm	X inch	Y inch
<b>VOLKSWAGEN Passat, 4-dr Sedan, *12-</b>	<b>270 mm</b>	<b>775 mm</b>	<b>10 <sup>5</sup>/<sub>8</sub> "</b>	<b>30 <sup>1</sup>/<sub>4</sub> "</b>



**7**

**GB/US** Tighten alternately  
**D** Die Schrauben abwechselnd anziehen  
**F** Serrer alternativement chaque côté  
**NL** Afwisselend aan de linker- en de rechterkant aandraaien  
**I** Alternare il serraggio delle viti  
**E** Apertar alternativamente  
**PT** Aperte alternadamente  
**S** Dra åt växelvis  
**FIN** Kierrä vuorotellen  
**EST** Pinguldage vaheldumisi  
**LAT** Pieļieciet pamišus  
**LIT** Užsukinėkite pakaitomis  
**PL** Śruby dokręcaj naprzemiennie  
**RU** Затягивайте попеременно

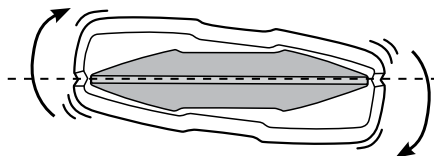
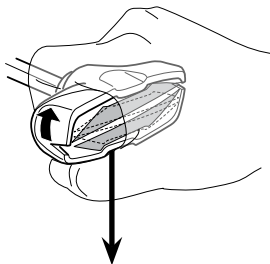
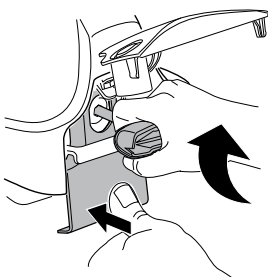
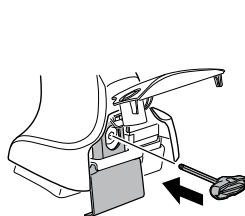
**CZ** Pokręťta bagażnika dokręcaj naprzemiennie.  
**SK** Dofahajte striedavo  
**SLO** Privijajte izmenično.  
**HR** Naizmjenično zategnite  
**HU** Egymástól függetlenül szorítandó  
**GR** Σφιγίγτες εναλλάξ  
**TR** Dönüşümlü sıkın

**中文** 交替拧紧

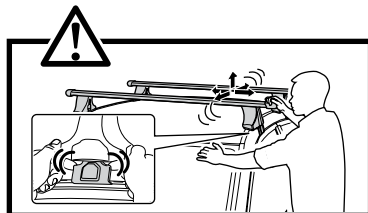
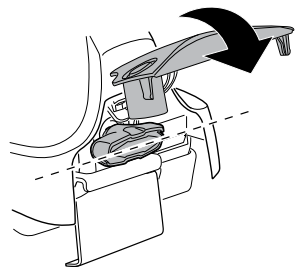
**한국어** 번갈아 가며 조이십시오.

**日本語** 交互に締め付けてください。

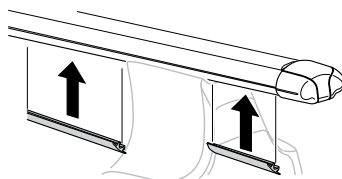
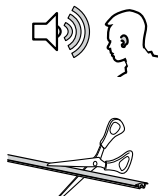
**ไทย** ชันในแบบสลับ

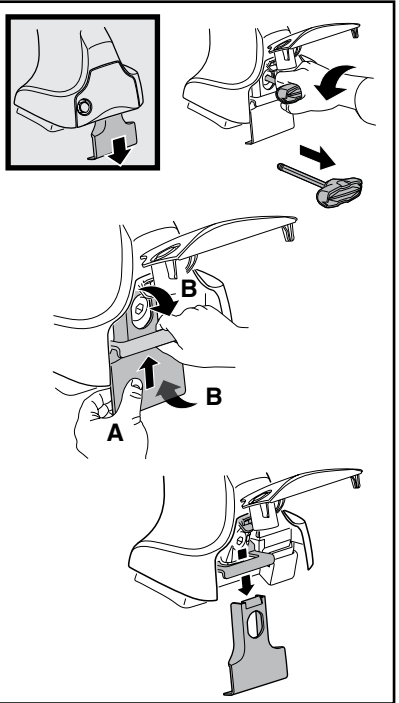
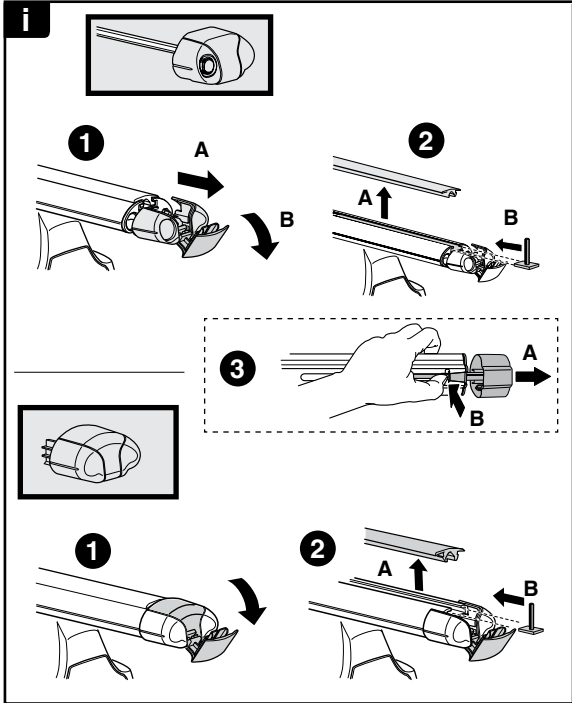


≈ 3 Nm

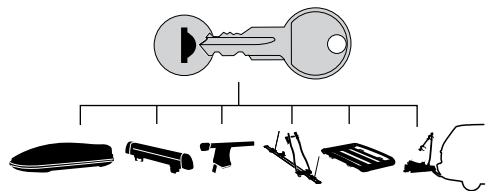
**8**

x1  
17 mm

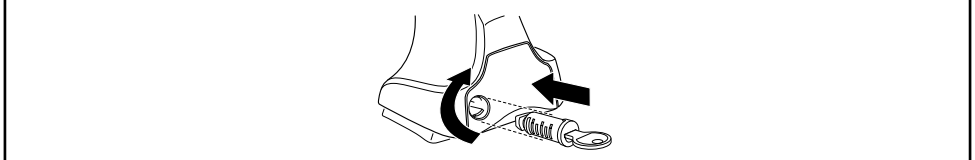




**THULE**  
SWEDEN  
**ONE  
KEY  
SYSTEM**



		(x4)
		(x6)
		(x8)
NA		(x10)
EUR		(x12)
ASIA		



WW ▶ Thule Sweden AB, Box 69, 330 33 Hillerstorp, SWEDEN  
NA ▶ Thule Inc., 42 Silvermine Road, Seymour, Connecticut 06483, USA

info@thule.com  
customer.service@thule.com

www.thule.com