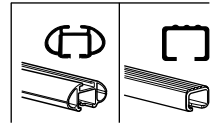


# Kit 1656

JEEP Grand Cherokee, 5-dr SUV, 11-



**754** Rapid System  
**480R** Rapid Traverse (North America)



**480** Traverse (North America)



- 754 Rapid System: x1 (box), x4 (ruler), x4 (Rapid System), x4 (480R Rapid Traverse (North America)), x4 (screwdriver)
- 480 Traverse (North America): x1 (ruler), x4 (Traverse (North America)), x4 (screwdriver), x4 (box)

- Bar: x2
- Hardware: x2 (23 mm), x2 (23 mm), x4 (screw), x4 (screw)
- Hardware: x1 (17 mm), x2 (23 mm), x2 (23 mm), x4 (nut)
- (North America): x2 (23 mm), x2 (23 mm), x2 (bar), x2 (bar)

- Bracket: x4 (1114)
- Bracket: x2 (162)
- Bracket: x1 (204)
- Bracket: x1 (206)
- Label: x1 (FR, FL, RL, RR)

1



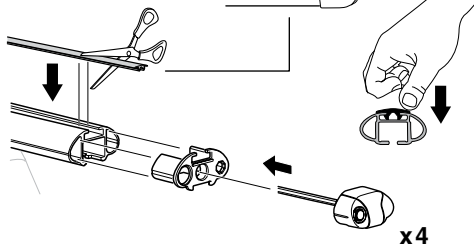
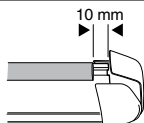
2



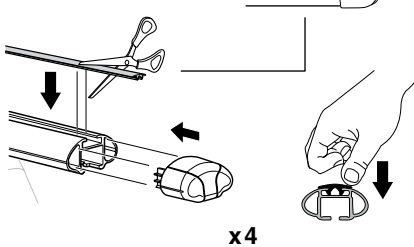
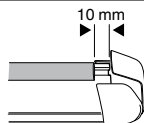
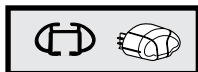
754 Rapid System  
480R Rapid Traverse  
(North America)



x4



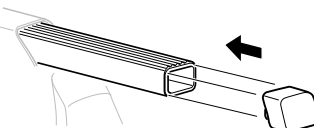
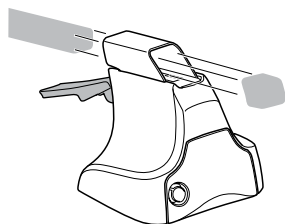
x4



x4



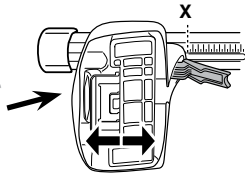
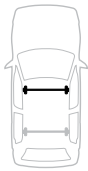
480 Traverse  
(North America)



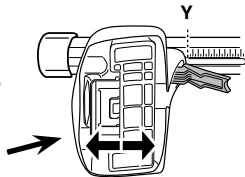
x4

**3**

754 Rapid System



	X
JEEP Grand Cherokee, 5-dr SUV, 11-	56



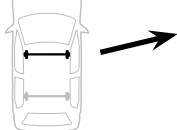
	Y
JEEP Grand Cherokee, 5-dr SUV, 11-	53

**3**

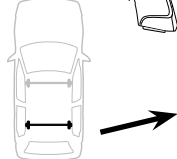
480R Rapid Traverse



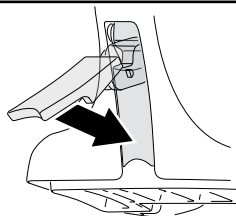
480 Traverse

**(North America)**

	X inch	X mm
JEEP Grand Cherokee, 5-dr SUV, 11-	47 <sup>5</sup> / <sub>8</sub> "	1211 mm

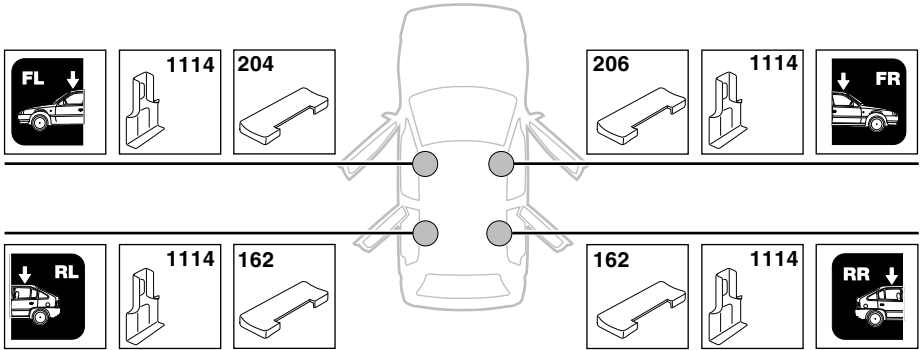


	Y inch	Y mm
JEEP Grand Cherokee, 5-dr SUV, 11-	46 <sup>1</sup> / <sub>2</sub> "	1181 mm

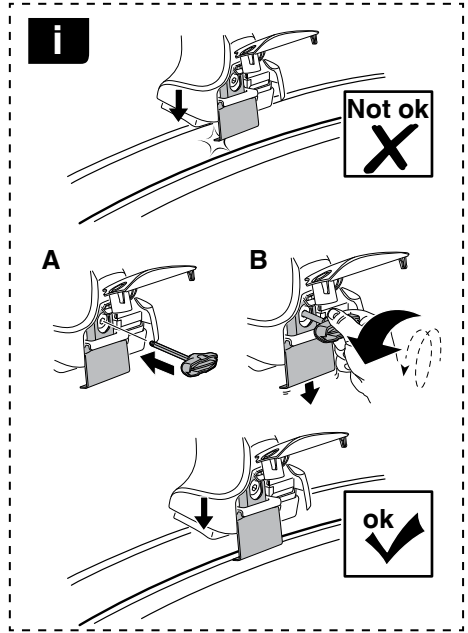
**4**

# 5

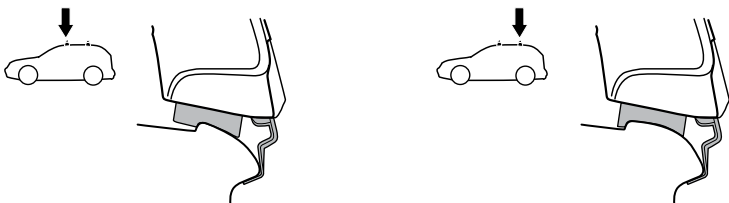
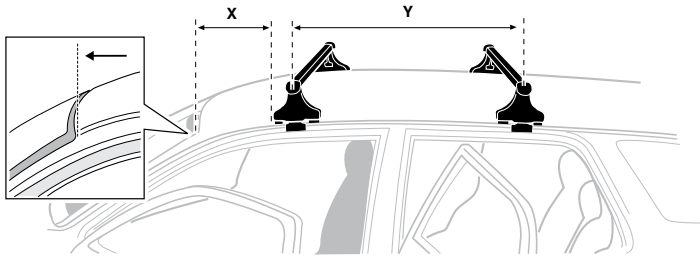
JEEP Grand Cherokee, 5-dr SUV, 11-



6



	X mm	Y mm	X inch	Y inch
JEEP Grand Cherokee, 5-dr SUV, 11-	254 mm	800 mm	10"	31 1/2"



7



<b>GB/US</b>	Tighten alternately
<b>D</b>	Die Schrauben abwechselnd anziehen
<b>F</b>	Serrer alternativement chaque côté
<b>NL</b>	Afwisselend aan de linker- en de rechterkant aandraaien
<b>I</b>	Alternare il serraggio delle viti
<b>E</b>	Apertar alternativamente
<b>PT</b>	Aperte alternadamente
<b>S</b>	Dra åt växelvis
<b>FIN</b>	Kierrä vuorotellen
<b>EST</b>	Pinguldage vaheldumisi
<b>LAT</b>	Pielveiciet pamišus
<b>LIT</b>	Užsukinėkite pakaitomis
<b>PL</b>	Śruby dokręcaj naprzemiennie
<b>RU</b>	Загряивайте попеременно

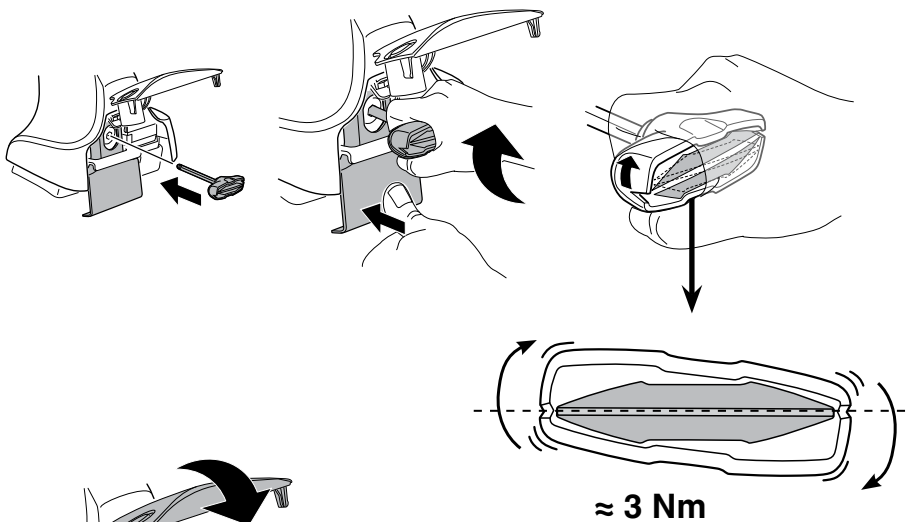
<b>CZ</b>	Pokręřta багаžnika dokręcaj naprzemiennie.
<b>SK</b>	Dofahajte striedavo
<b>SLO</b>	Privijajte izmenično.
<b>HR</b>	Naizmjenično zategnite
<b>HU</b>	Egymástól függetlenül szorítandó
<b>GR</b>	Σφιγίγτες εναλλάξ
<b>TR</b>	Dönüşümlü sıkın

**中文** 交替拧紧

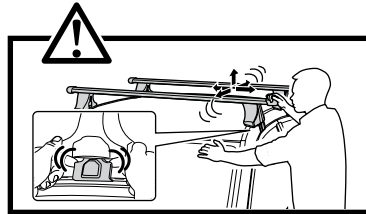
**한국어** 번갈아 가며 조이십시오.

**日本語** 交互に締め付けてください。

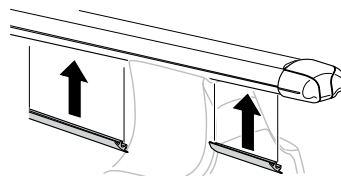
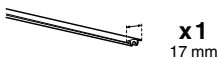
**ไทย** ชันในแบบสลับ

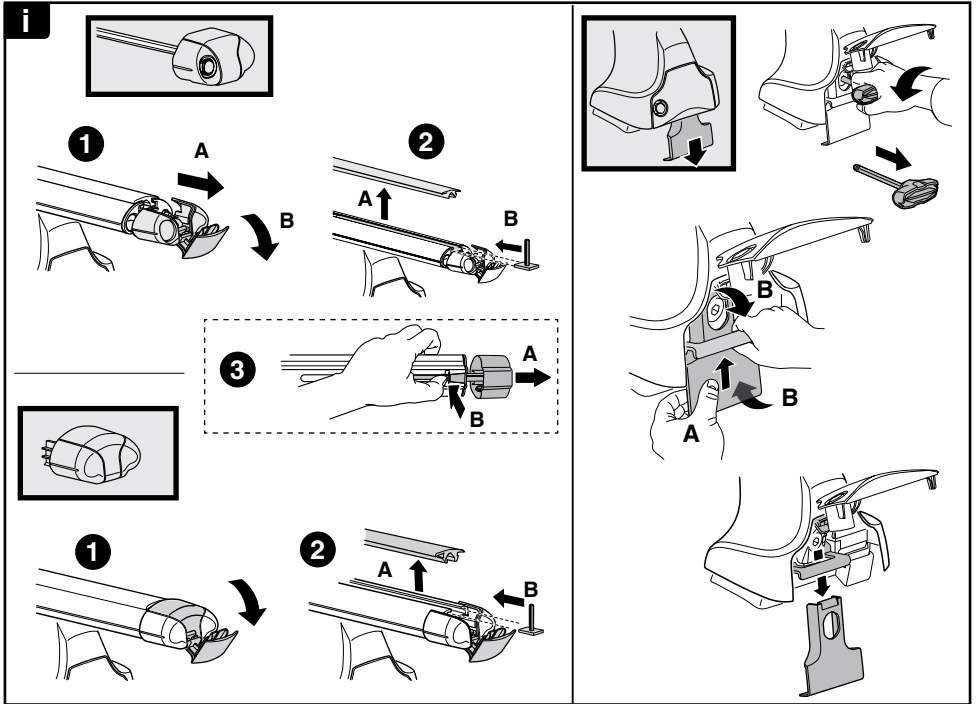
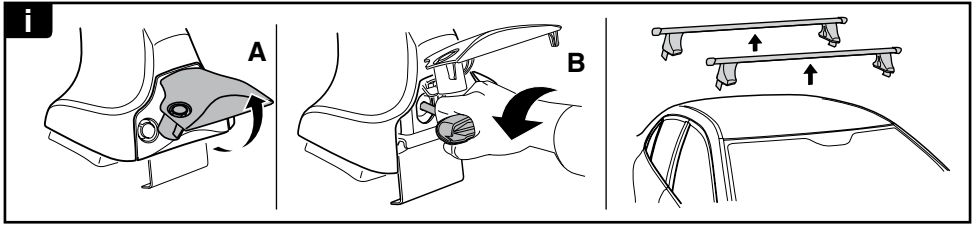


≈ 3 Nm

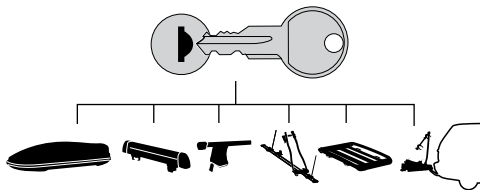


8





**THULE**  
SWEDEN  
**ONE  
KEY  
SYSTEM**



**544** (x4)

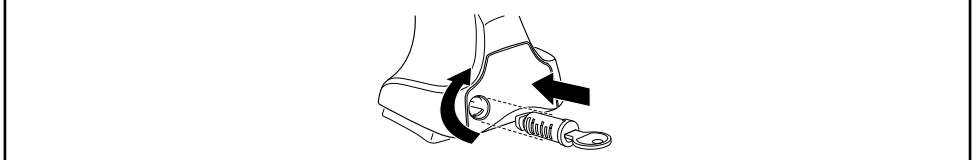
**596** (x6)

**588** (x8)

NA **510** (x10)

EUR **452** (x12)

ASIA



WW ▶ Thule Sweden AB, Box 69, 330 33 Hillerstorp, SWEDEN  
NA ▶ Thule Inc., 42 Silvermine Road, Seymour, Connecticut 06483, USA

info@thule.com  
customer.service@thule.com

www.thule.com

503-1656-01