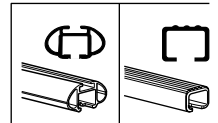
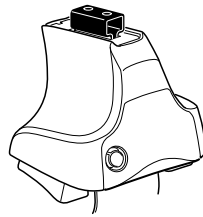


Kit 1526

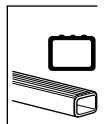
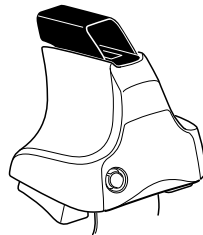
BMW X6, 5-dr SUV, 08- / *09-

*North America

480R
754

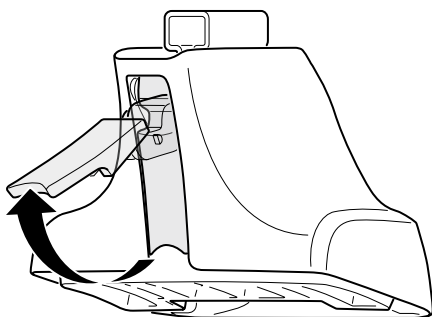
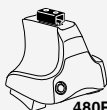


480



Kit

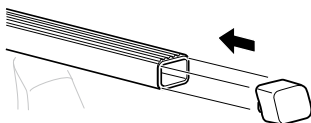
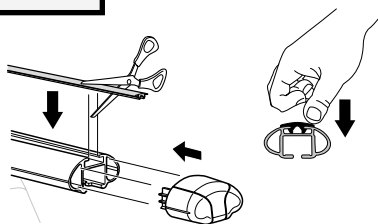
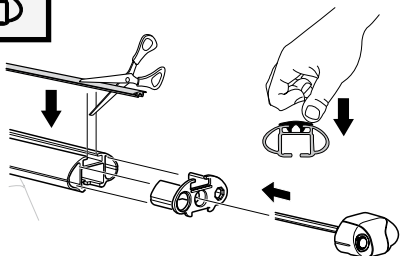
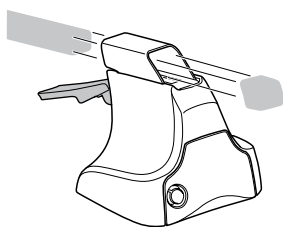
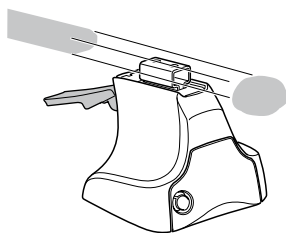
1



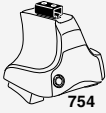
2



+

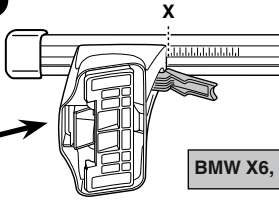
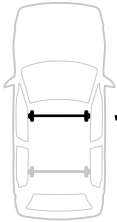


3

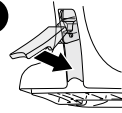


754

1

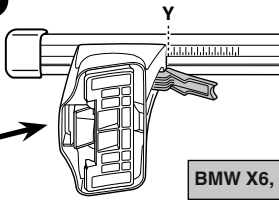


2

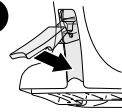


BMW X6, 5-dr SUV, 08- / *09-	X
	44

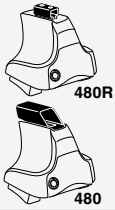
1



2



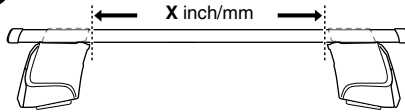
BMW X6, 5-dr SUV, 08- / *09-	Y
	46



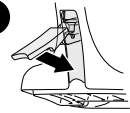
480R

480

1

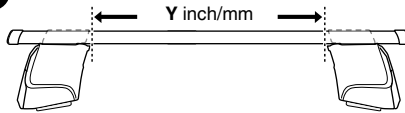


2

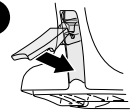


BMW X6, 5-dr SUV, 08- / *09-	X inch	X mm
	43"	1091 mm

1



2



BMW X6, 5-dr SUV, 08- / *09-	Y inch	Y mm
	43 3/4"	1111 mm

4



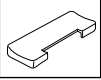
480R/754



480

BMW X6, 5-dr SUV, 08- / *09-

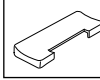
121



1033



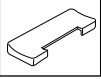
120



1034



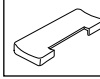
127



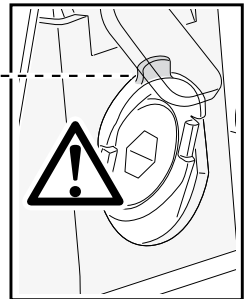
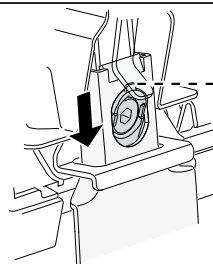
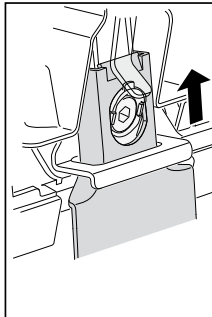
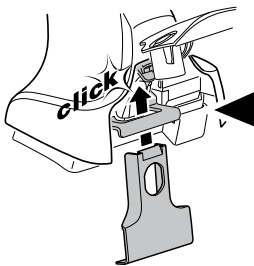
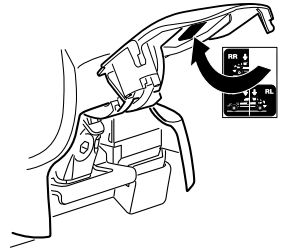
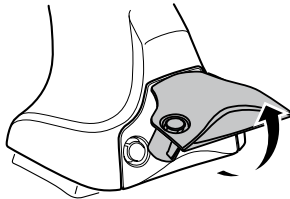
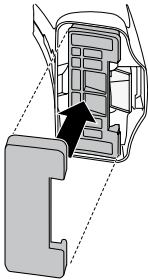
1034



127



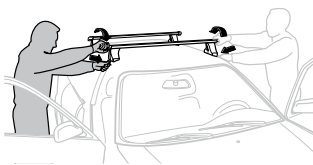
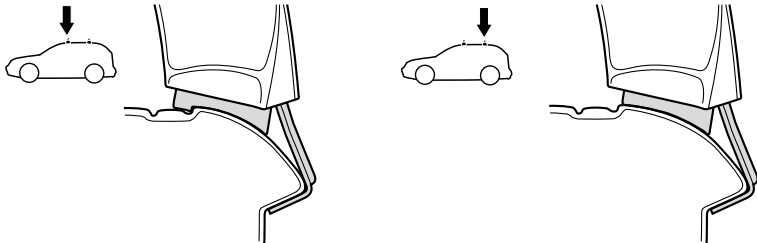
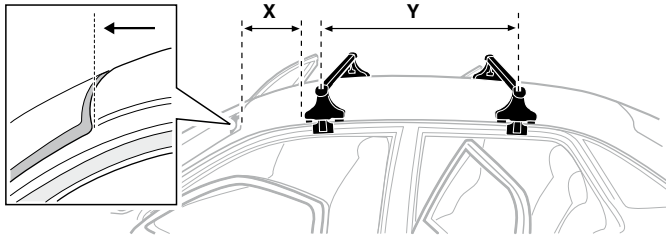
1033



5

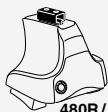


	X mm	Y mm	X inch	Y inch
BMW X6, 5-dr SUV, 08- / *09-	230 mm	650 mm	9"	25 5/8"



- | | | | |
|--------------|---|------------|---|
| GB/US | Tighten alternately | CZ | Pokřetla bagazníka dokřcaj dokřcaj napřezemnie. |
| D | Die Schrauben abwechselnd anziehen | SK | Dofahujte striedavo |
| F | Serrer alternativement chaque côté | SLO | Privijajte izmenično. |
| NL | Afwisselend aan de linker- en de rechterkant aandraaien | HR | Naizmjenično zategnite |
| I | Alternare il serraggio delle viti | HU | Egymástól függetlenül szorítandó |
| E | Apretar alternativamente | GR | Σφιγγετε εναλλάξ |
| PT | Aperte alternadamente | TR | Dönüşümlü sıkın |
| S | Dra åt växelvis | 中文 | 交替拧紧 |
| FIN | Kierrä vuorotellen | 한국어 | 번갈아 가며 조이십시오. |
| EST | Pinguldage vaheldumisi | 日本語 | 交互に締め付けてください。 |
| LAT | Pievelciet pamišus | ไทย | ขันในแบบสลับ |
| LIT | Užsukinėkite pakaitomis | | |
| PL | Śruby dokrcaj naprzemiennie | | |
| RU | Затягивайте попеременно | | |

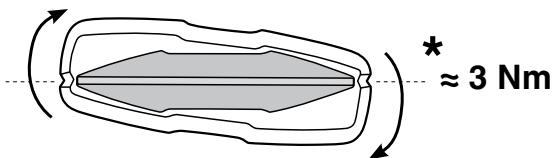
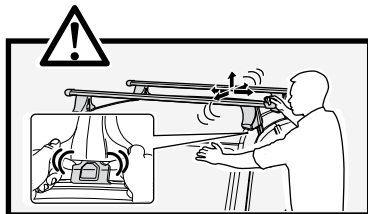
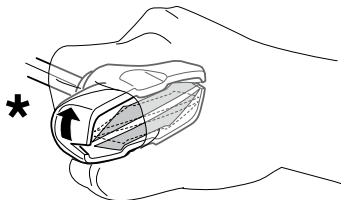
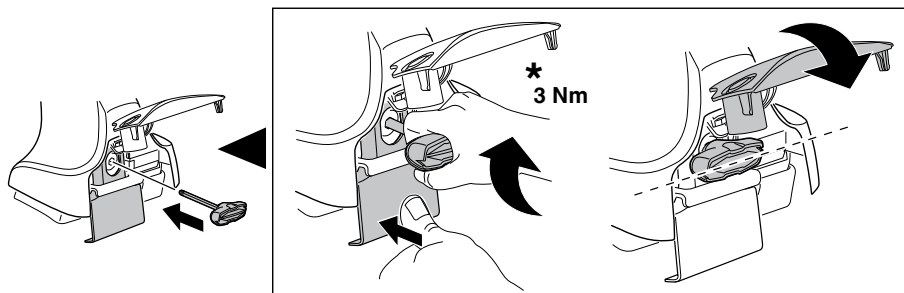
6



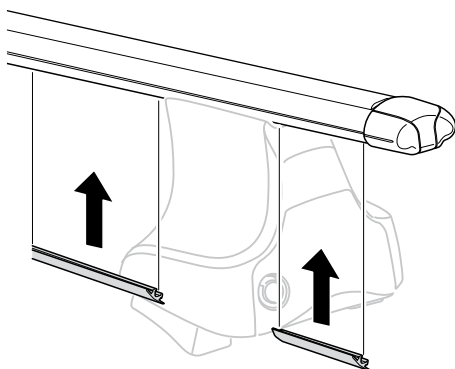
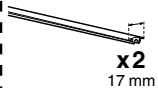
480R/754

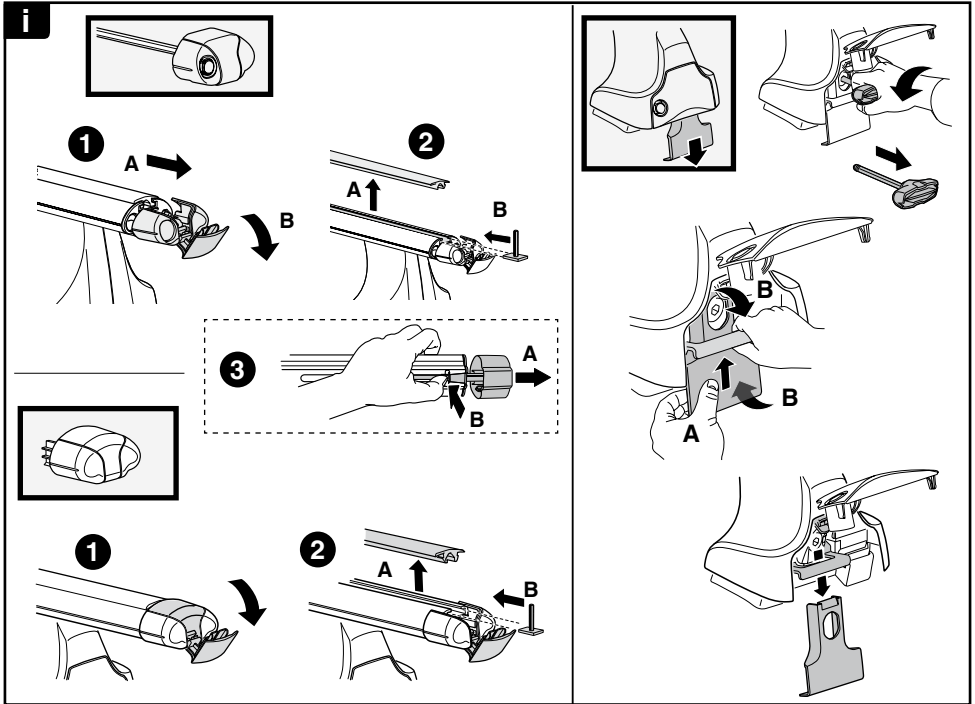
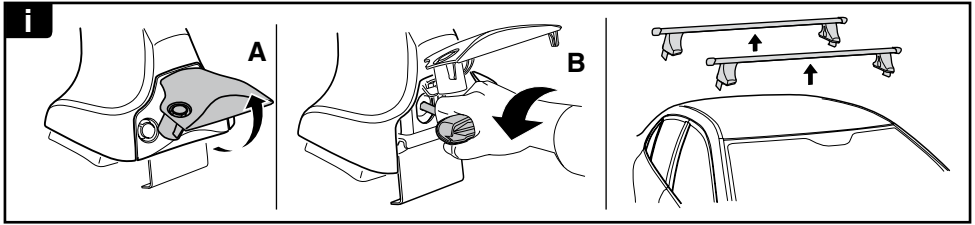


480

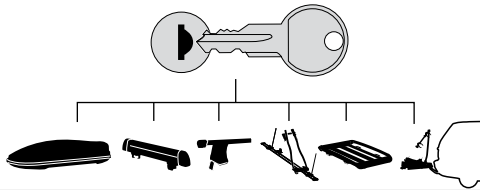


7

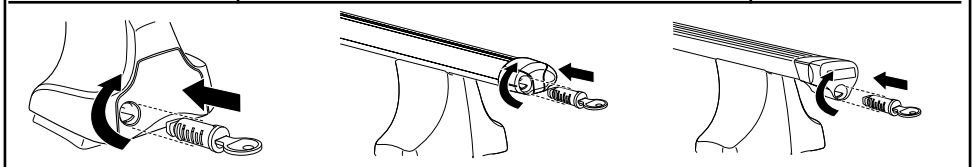




THULE
SWEDEN
**ONE
KEY
SYSTEM**



- 544** (x4)
- 596** (x6)
- 588** (x8)
- NA **510** (x10)
- EUR **452** (x12)
- ASIA



WW ▶ Thule Sweden AB, Box 69, 330 33 Hillerstorp, SWEDEN
NA ▶ Thule Inc., 42 Silvermine Road, Seymour, Connecticut 06483, USA

info@thule.com
customer.service@thule.com

www.thule.com