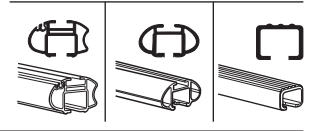
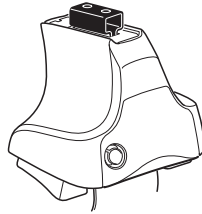


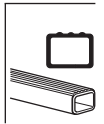
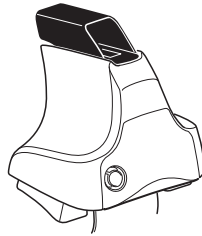
# Kit 1492

ACURA TSX, 4-dr Sedan, 09–  
HONDA Accord, 4-dr Sedan, 08–

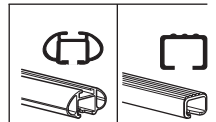
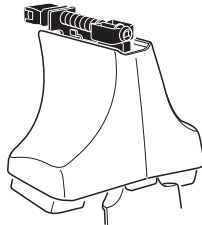
480R  
754



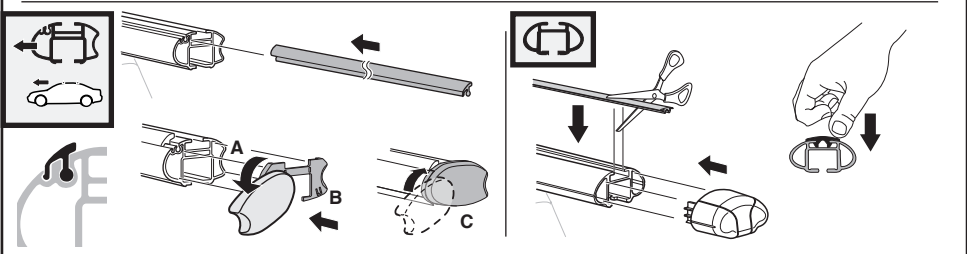
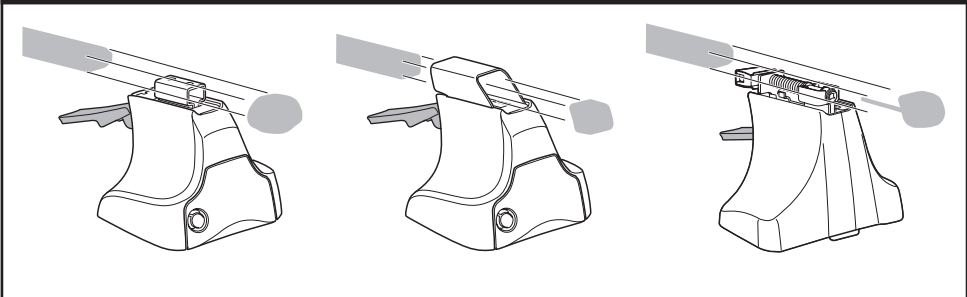
480



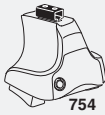
750



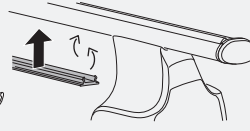
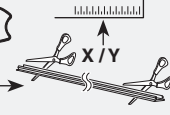
**Kit**



3

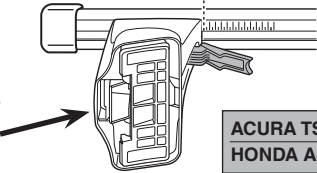
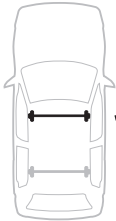


754



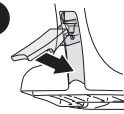
750

1



X

2

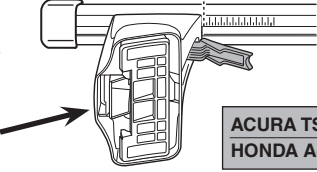


ACURA TSX, 4-dr Sedan, 09–  
HONDA Accord, 4-dr Sedan, 08–

X

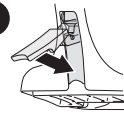
43  
42,5

1



Y

2



ACURA TSX, 4-dr Sedan, 09–  
HONDA Accord, 4-dr Sedan, 08–

Y

37.5  
37

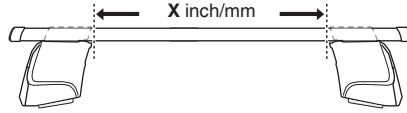


480R

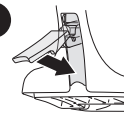


480

1



2



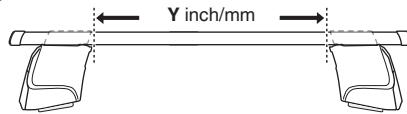
ACURA TSX, 4-dr Sedan, 09–  
HONDA Accord, 4-dr Sedan, 08–

X inch

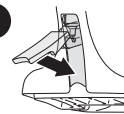
X mm

42 1/2" 1081 mm  
42 3/8" 1076 mm

1



2



ACURA TSX, 4-dr Sedan, 09–  
HONDA Accord, 4-dr Sedan, 08–

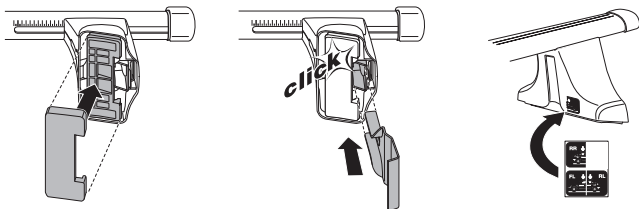
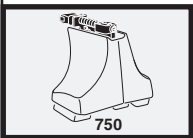
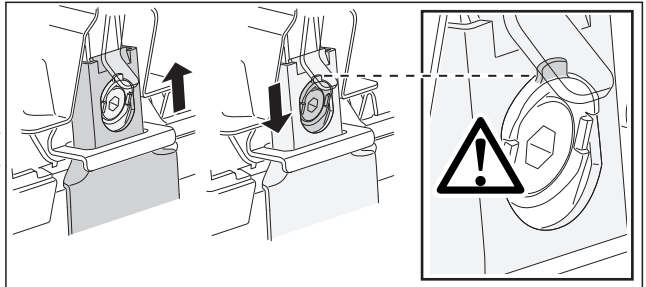
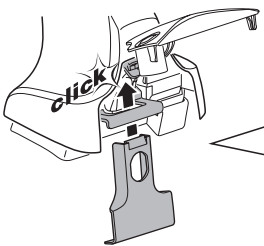
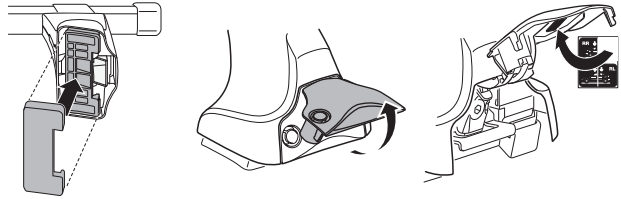
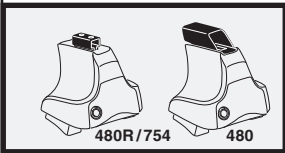
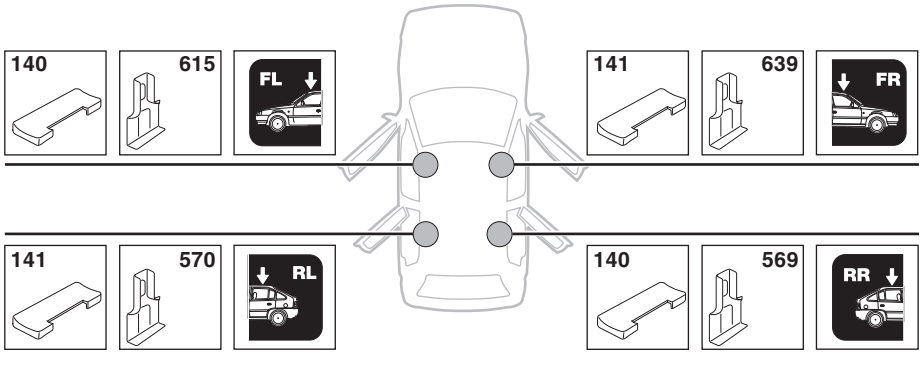
Y inch

Y mm

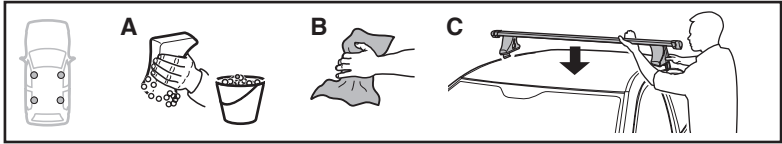
40 1/2" 1026 mm  
40 1/4" 1021 mm

# 4

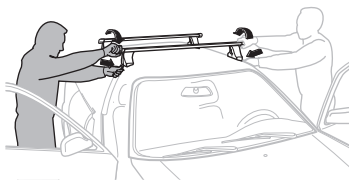
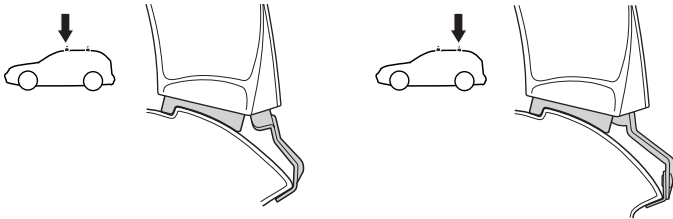
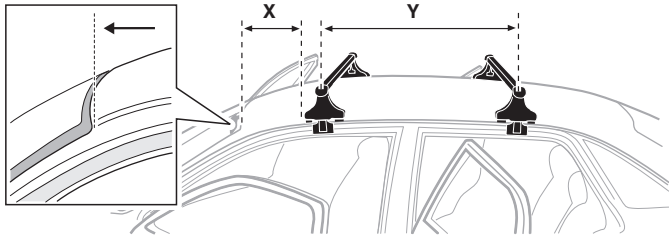
ACURA TSX, 4-dr Sedan, 09–  
 HONDA Accord, 4-dr Sedan, 08–



5



	X mm	Y mm	X inch	Y inch
ACURA TSX, 4-dr Sedan, 09–	250 mm	650 mm	9 7/8"	25 5/8"
HONDA Accord, 4-dr Sedan, 08–	250 mm	650 mm	9 7/8"	25 5/8"



**GB/US** Tighten alternately

**D** Die Schrauben abwechselnd anziehen

**F** Serrer alternativement chaque côté

**NL** Afwisselend aan de linker- en de rechterkant aandraaien

**I** Alternare il serraggio delle viti

**E** Serrare alternativamente

**PT** Aperte alternadamente

**S** Dra åt växelvis

**FIN** Kierrä vuorotellen

**EST** Pinguldage vaheldumisi

**LAT** Pielieciet pamišus

**LIT** Užsukinėkite pakaitomis

**PL** Śruby dokręcaj naprzemiennie

**RU** Затягивайте попеременно

**CZ** Pokręťta bagazníka dokręcaj dokręcaj naprzemiennie.

**SK** Doťahujte striedavo

**SLO** Privijajte izmenično.

**HR** Naizmjenično zategnite

**HU** Egymástól függetlenül szorítandó

**GR** Σφιγγετε εναλλάξ

**TR** Dönüşümlü sıkın

**中文** 交替拧紧

**한국어** 번갈아 가며 조이십시오.

**日本語** 交互に締め付けてください。

**ไทย** ชันโนแบบสลับ

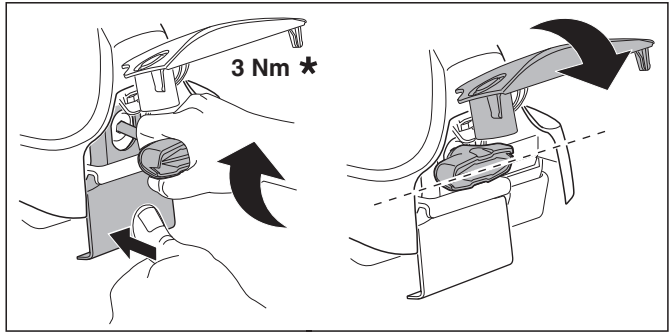
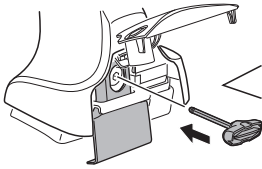
6



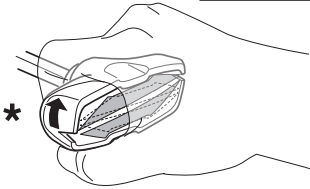
480R/754



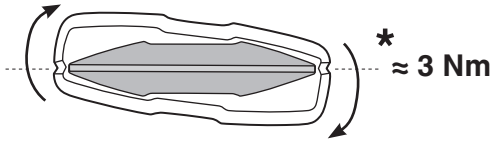
480



3 Nm \*



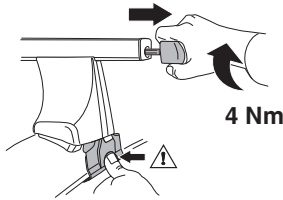
\*



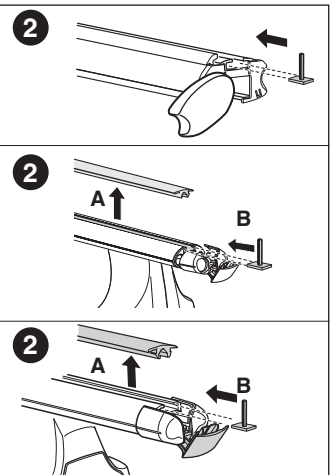
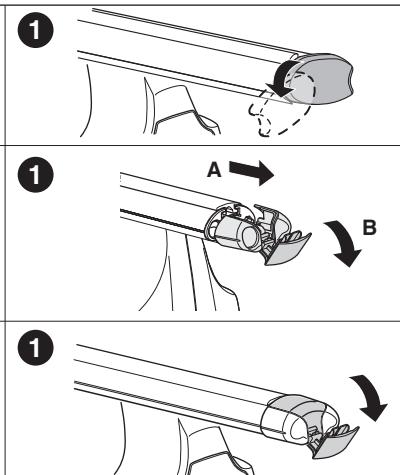
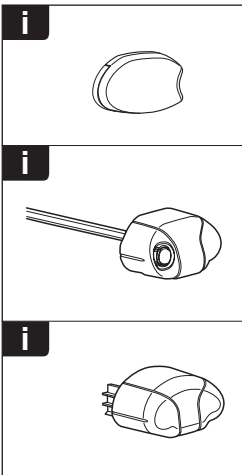
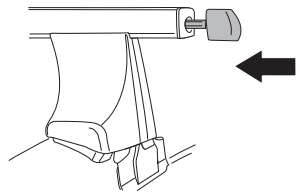
\* ≈ 3 Nm

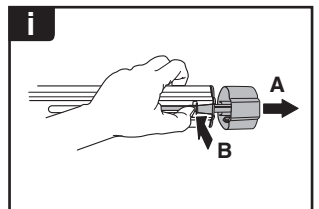
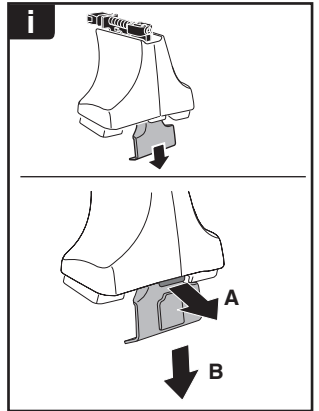
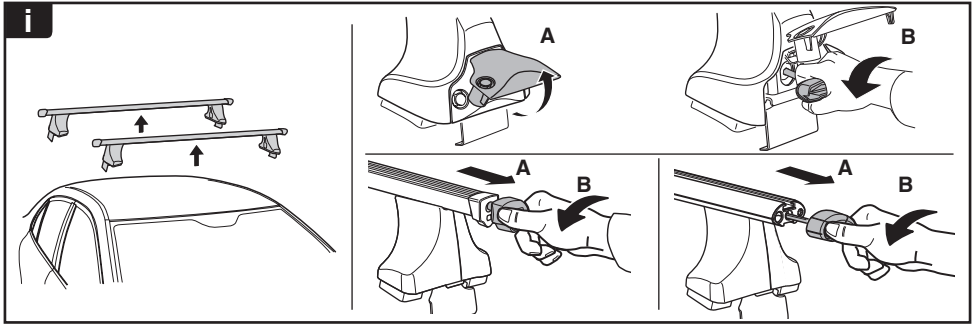


750



4 Nm

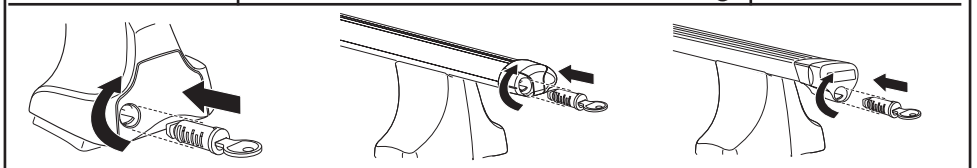




**THULE**  
SWEDEN  
**ONE  
KEY  
SYSTEM**



- 544 (x4)
- 596 (x6)
- 588 (x8)
- NA 510 (x10)
- EUR 452 (x12)
- ASIA



WW ▶ Thule Sweden AB, Box 69, 330 33 Hillerstorp, SWEDEN  
NA ▶ Thule Inc., 42 Silvermine Road, Seymour, Connecticut 06483, USA

info@thule.com  
customer.service@thule.com

www.thule.com