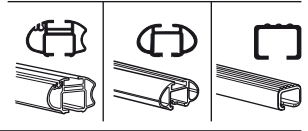
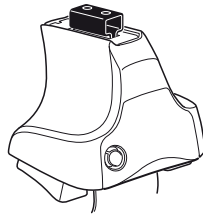


Kit 1490

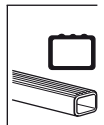
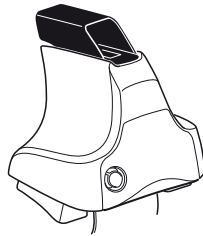
TOYOTA Kluger, 4-dr SUV, 07-*

* Without rails

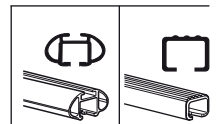
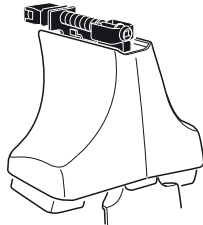
480R
754



480



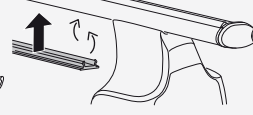
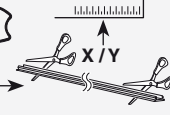
750



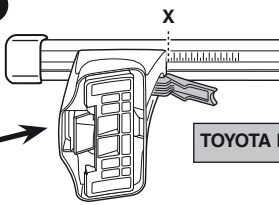
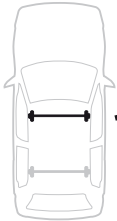
Kit



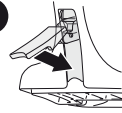
3



1



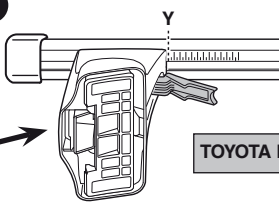
2



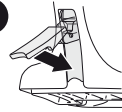
TOYOTA Kluger, 4-dr SUV, 07-

X
49,5

1



2



TOYOTA Kluger, 4-dr SUV, 07-

Y
47

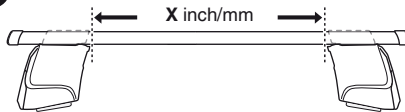


480R



480

1



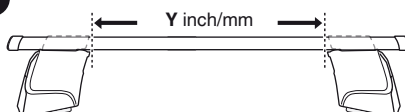
2



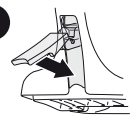
TOYOTA Kluger, 4-dr SUV, 07-

X inch	X mm
45 1/8"	1146 mm

1



2

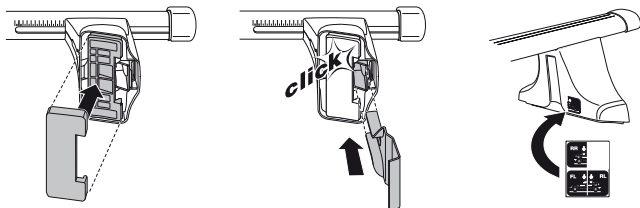
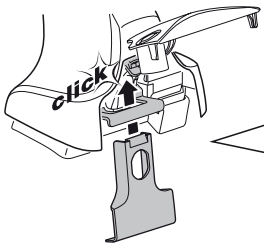
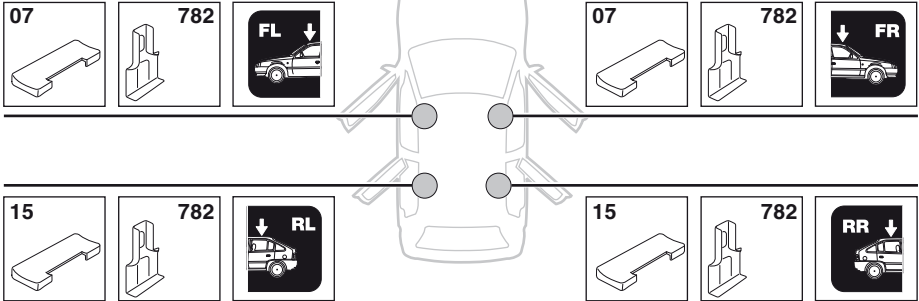


TOYOTA Kluger, 4-dr SUV, 07-

Y inch	Y mm
44 1/8"	1121 mm

4

TOYOTA Kluger, 4-dr SUV, 07-



5



TOYOTA Kluger, 4-dr SUV, 07–

X mm

Y mm

X inch

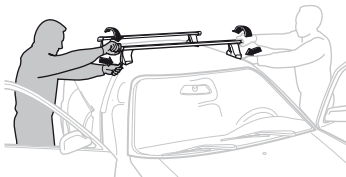
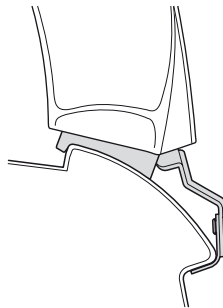
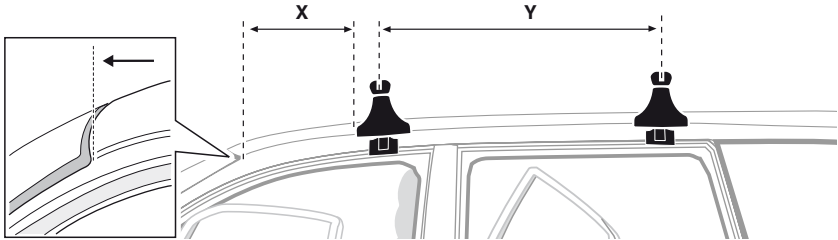
Y inch

470 mm

750 mm

18 1/2"

29 1/2"



GB/US Tighten alternately

D Die Schrauben abwechselnd anziehen

F Serrer alternativement chaque côté

NL Afwisselend aan de linker- en de rechterkant aandraaien

I Alternare il serraggio delle viti

E Apertar alternativamente

PT Aperte alternadamente

S Dra åt växelvis

FIN Kierrä vuorotellen

EST Pinguldage vaheldumisi

LAT Pievelciet pamišus

LIT Užsukinėkite pakaitomis

PL Śruby dokręcaj naprzemiennie

RU Затягивайте попеременно

CZ Pokręťta bagažníka dokręcaj dokręcaj naprzemiennie.

SK Doťahujte striedavo

SLO Privijajte izmenično.

HR Naizmjenično zategnite

HU Egymástól függetlenül szorítandó

GR Σφιγγετε εναλλάξ

TR Dönüşümlü sıkın

中文 交替拧紧

한국어 번갈아 가며 조이십시오.

日本語 交互に締め付けてください。

ไทย ชันโนแบบสลับ

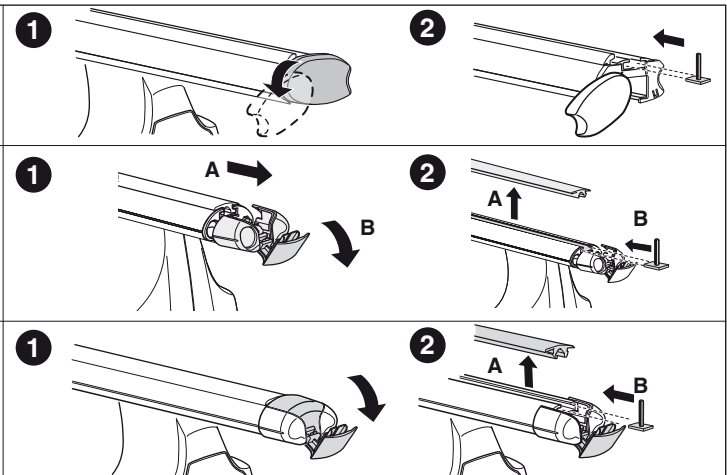
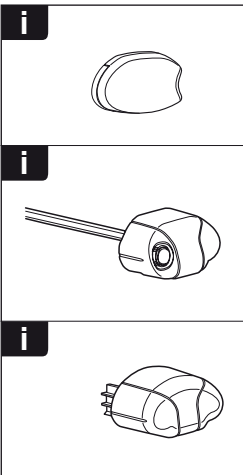
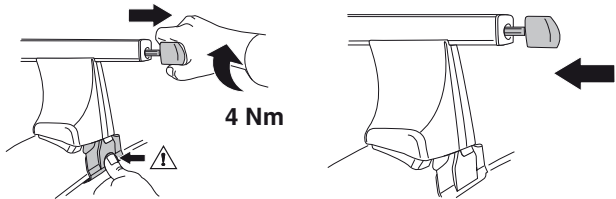
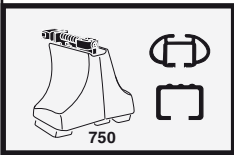
6

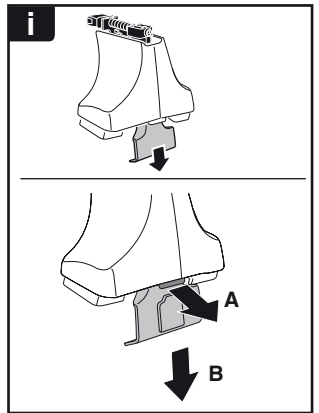


480R/754



480





THULE
SWEDEN
**ONE
KEY
SYSTEM**



- 544 (x4)
- 596 (x6)
- 588 (x8)
- NA 510 (x10)
- EUR 452 (x12)
- ASIA



WW ▶ Thule Sweden AB, Box 69, 330 33 Hillerstorp, SWEDEN
NA ▶ Thule Inc., 42 Silvermine Road, Seymour, Connecticut 06483, USA

info@thule.com
customer.service@thule.com

www.thule.com