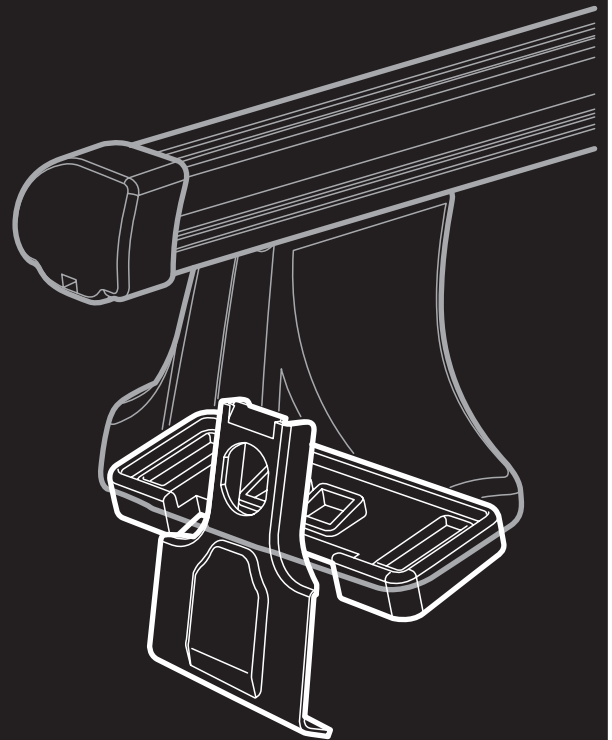


# Load Carrier Kit 1475

121475



- HYUNDAI H-1, 5-dr Van, 08 – (With dual sliding doors)*
- HYUNDAI iLoad, 5-dr Van, 08 – (With dual sliding doors), (Asia)*
- HYUNDAI iMax, 5-dr Bus, 08 – (With dual sliding doors), (Asia)*
- HYUNDAI Starex, 5-dr Van, 08 – (With dual sliding doors)*

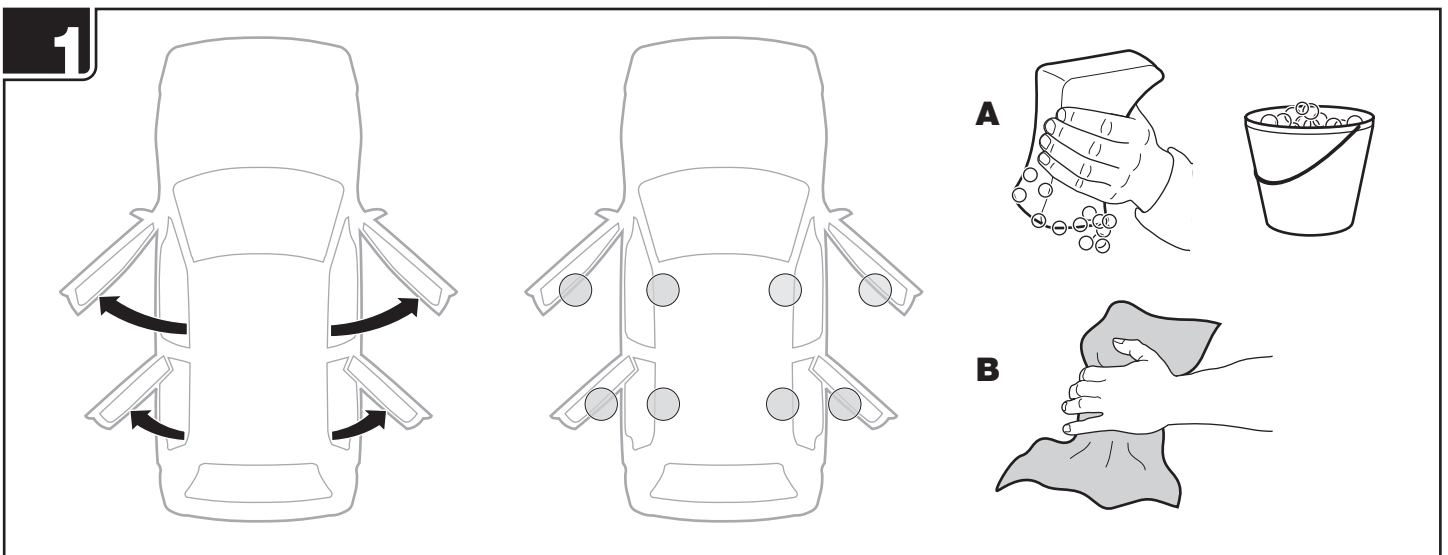
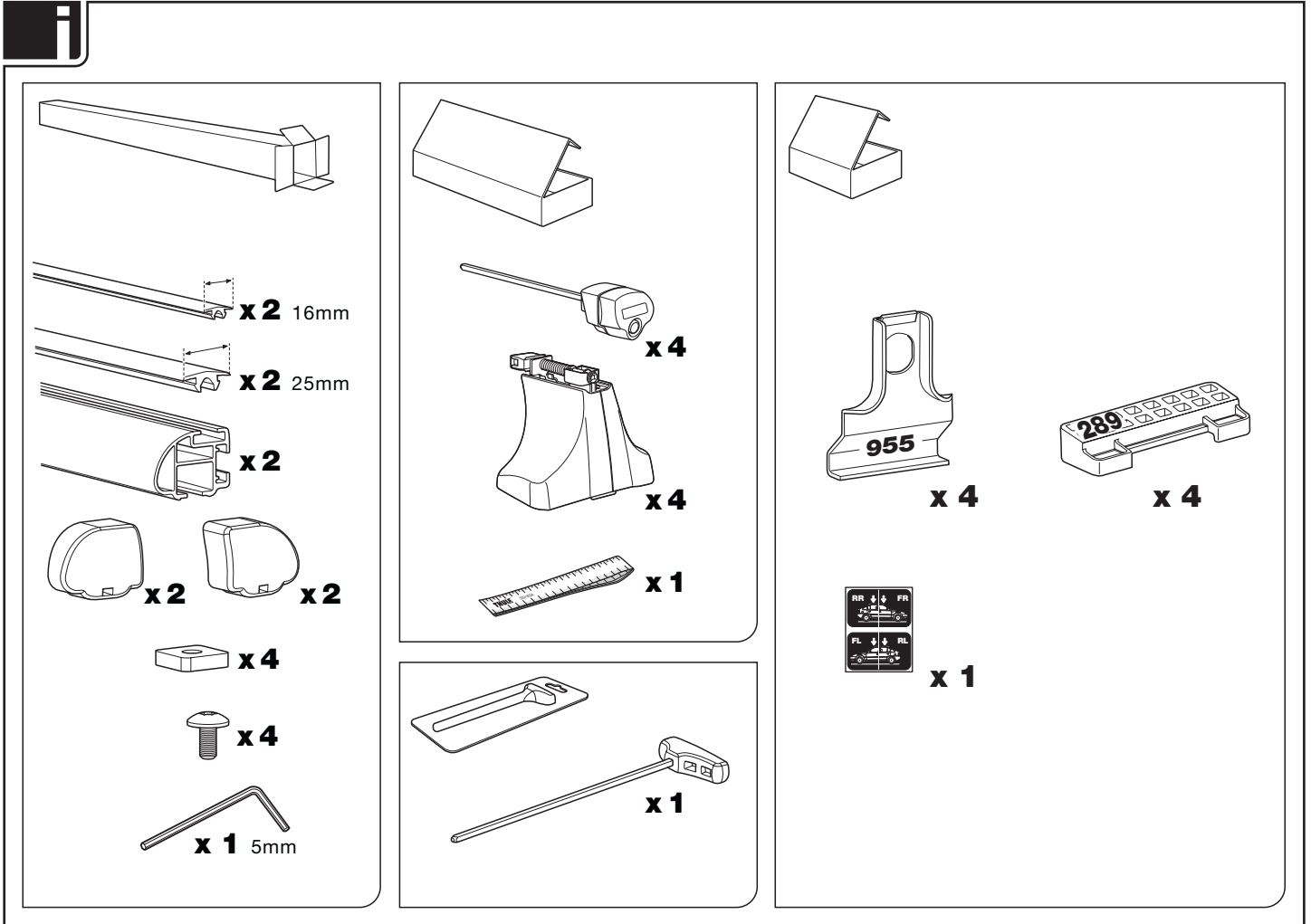
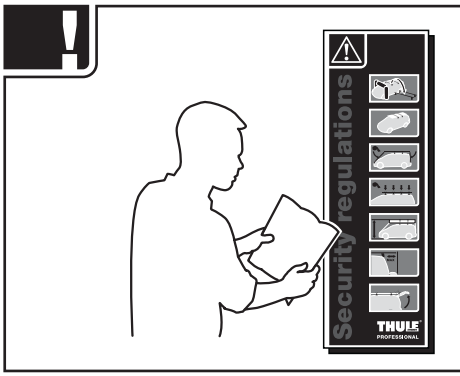


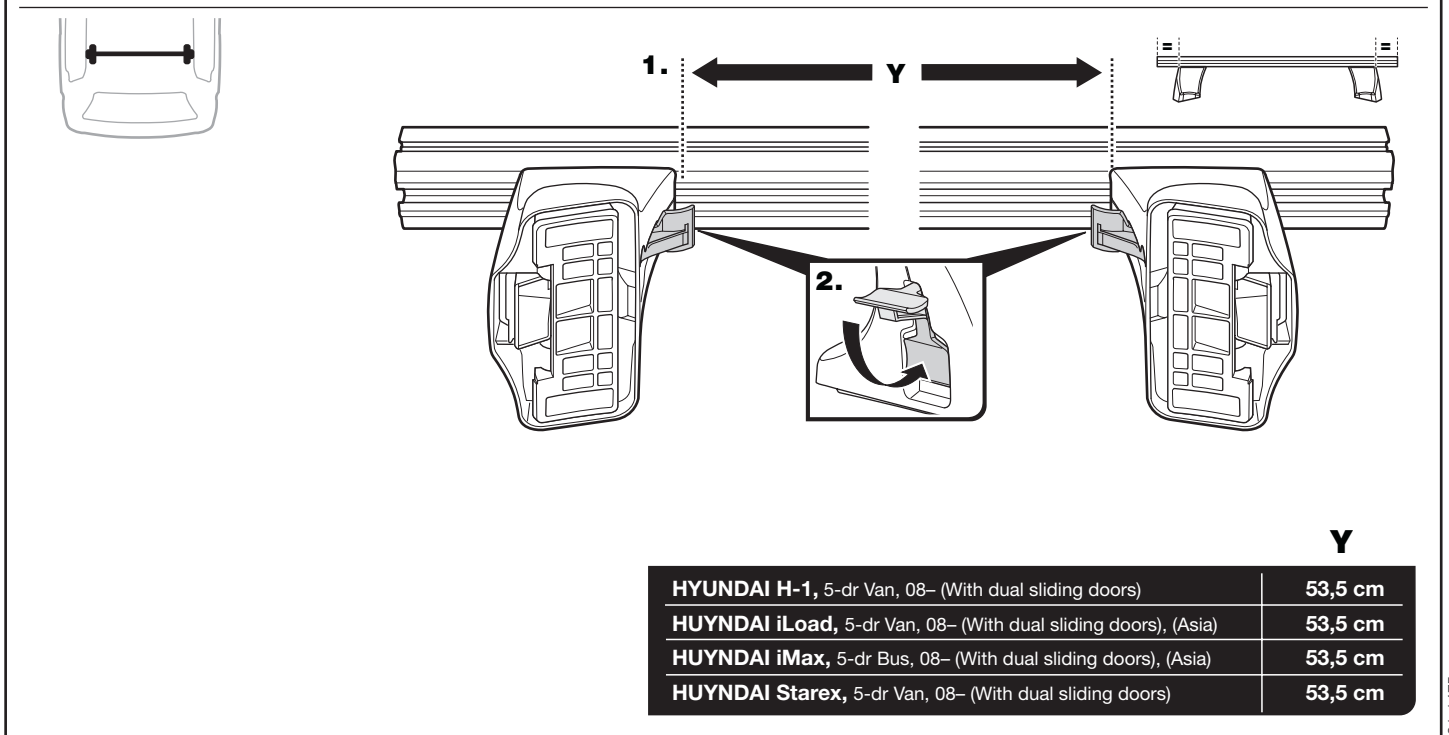
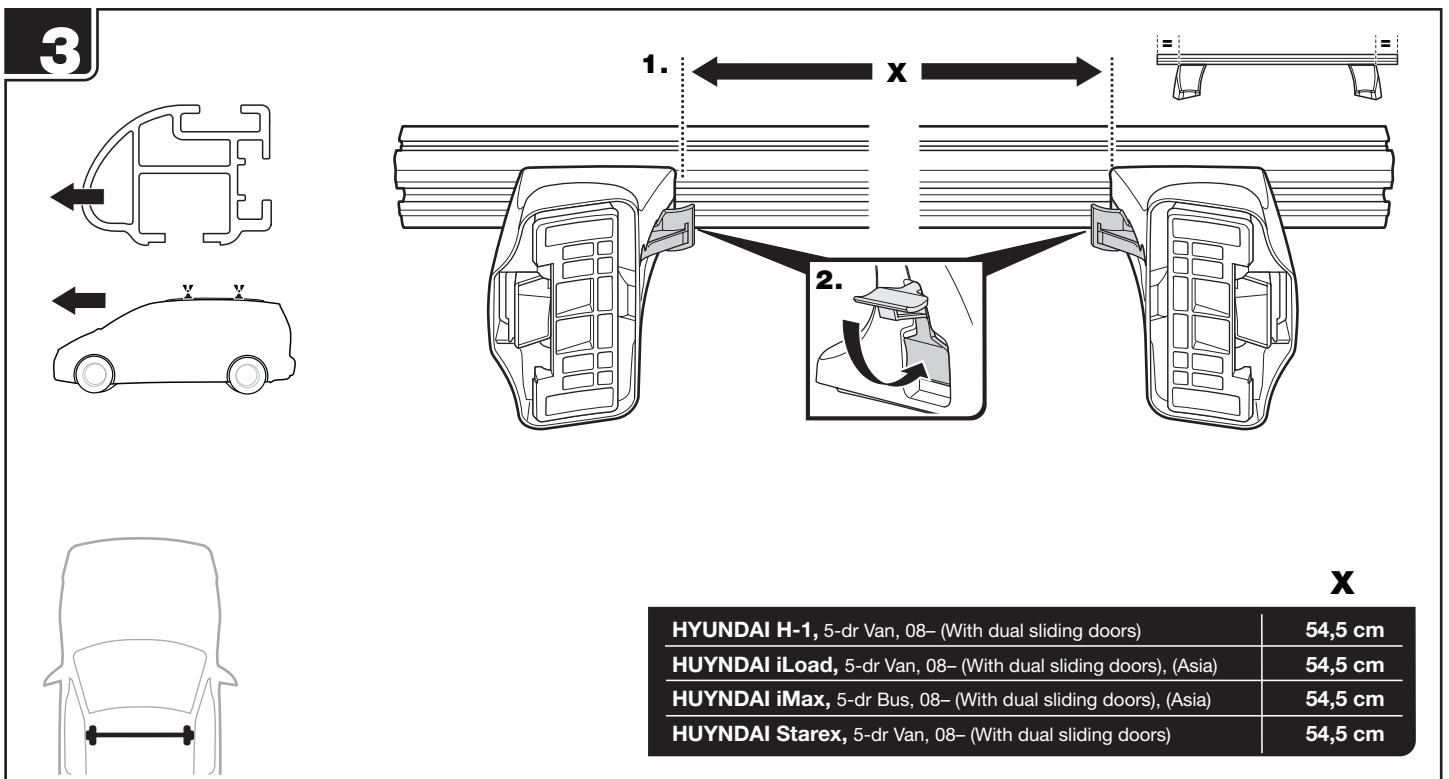
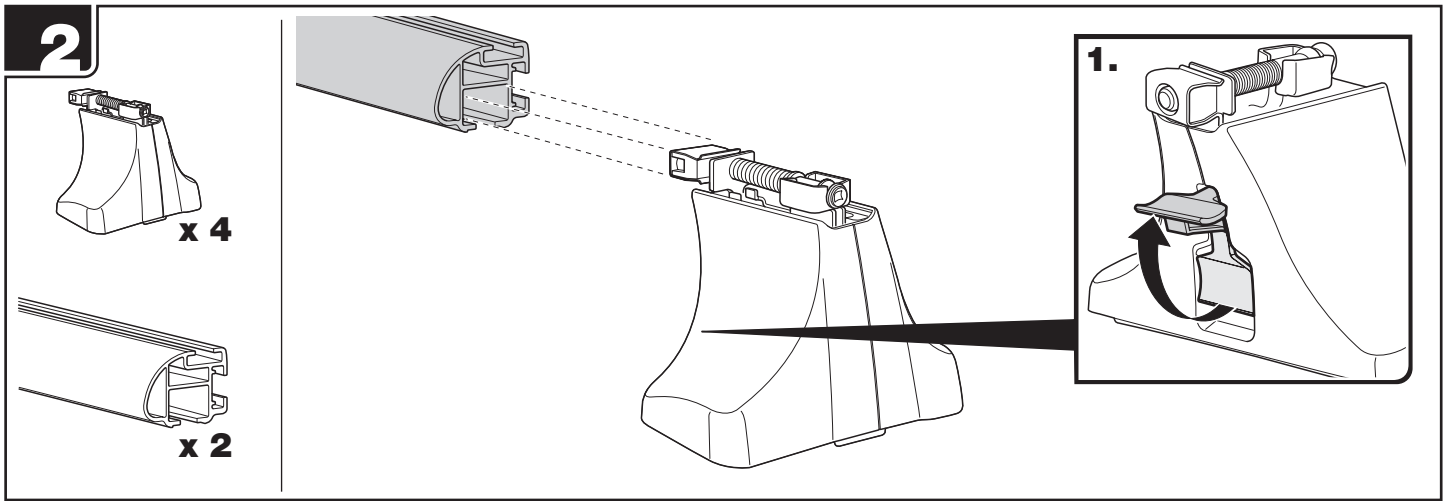
**THULE**<sup>®</sup>  
SWEDEN  
**PROFESSIONAL**

Thule Sweden AB, Box 69, 330 33 Hillerstorp, SWEDEN

[www.thuleprofessional.com](http://www.thuleprofessional.com)

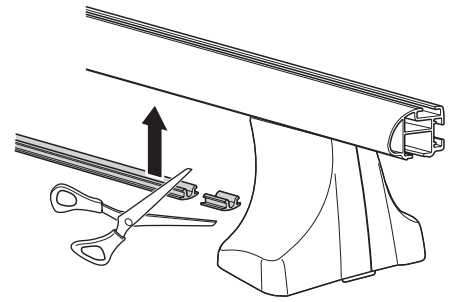
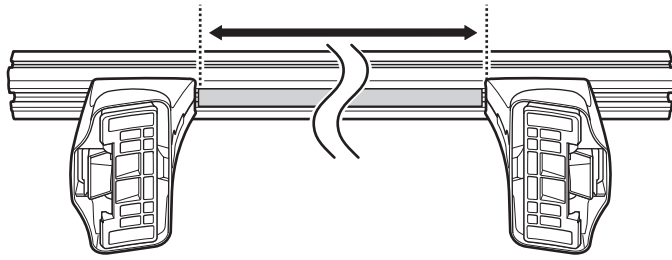
[info@thule.com](mailto:info@thule.com)



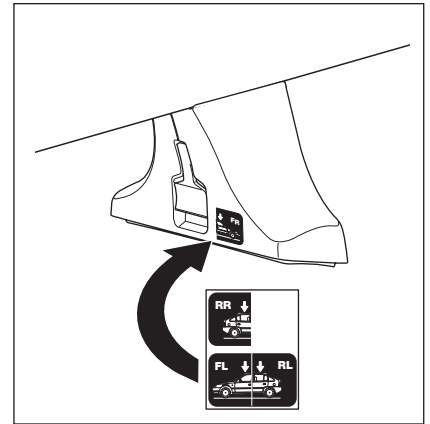
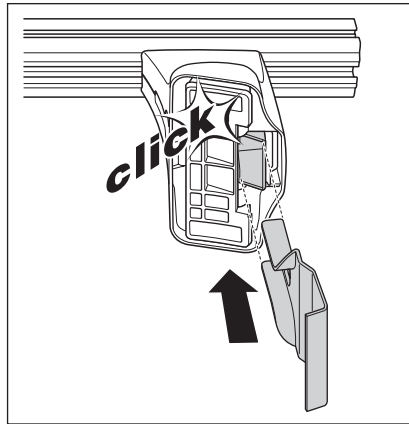
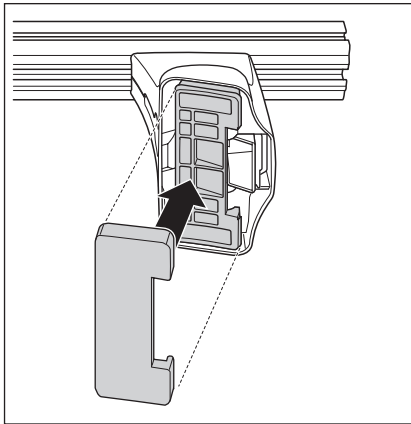


4

x2  
16mm



5

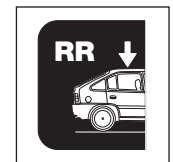
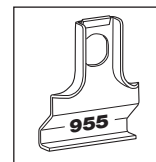
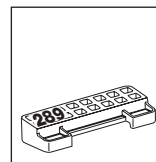
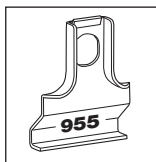
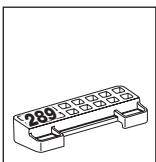
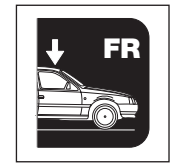
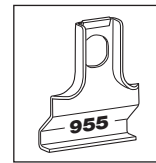
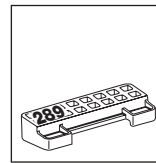
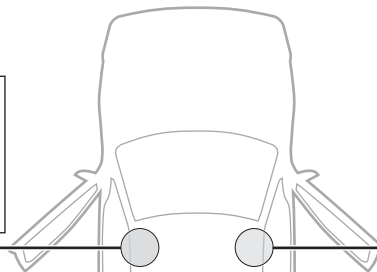
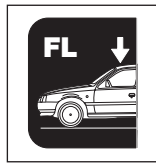
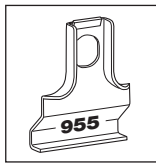
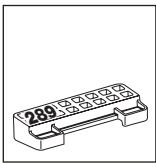


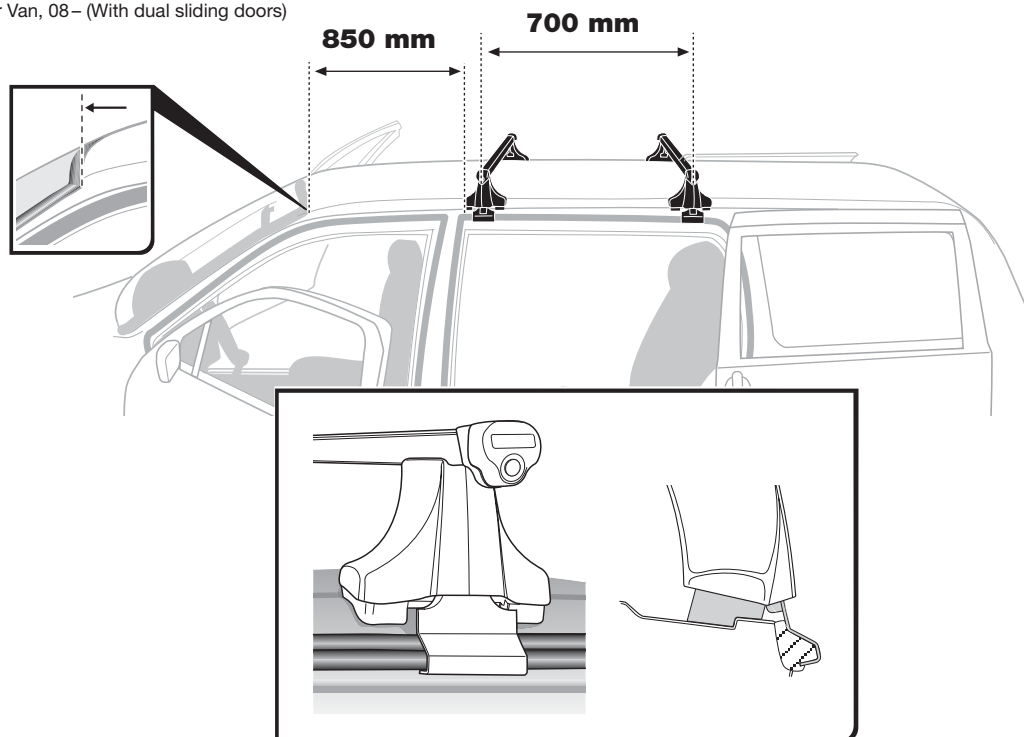
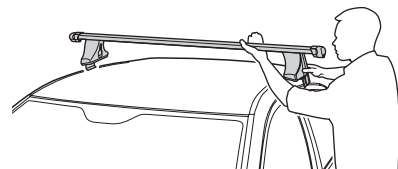
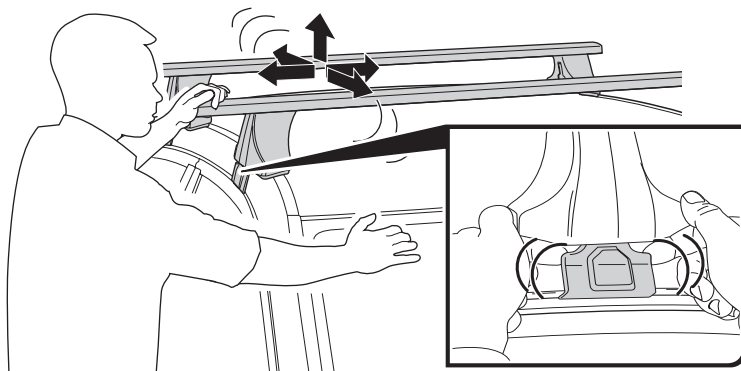
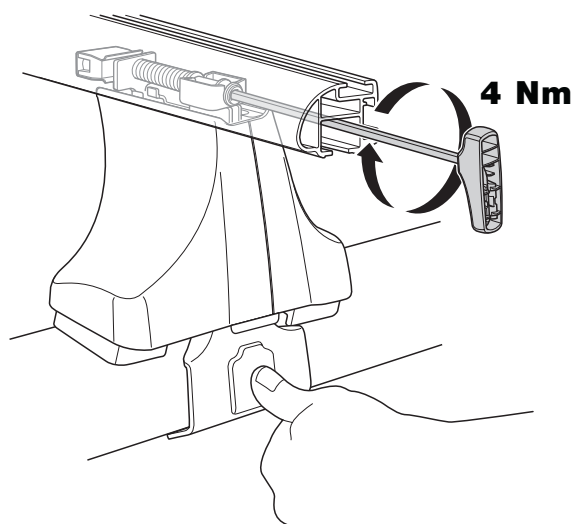
**HYUNDAI H-1**, 5-dr Van, 08 – (With dual sliding doors)

**HYUNDAI iLoad**, 5-dr Van, 08 – (With dual sliding doors), (Asia)

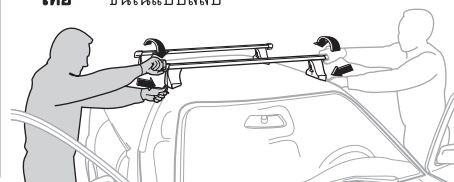
**HYUNDAI iMax**, 5-dr Bus, 08 – (With dual sliding doors), (Asia)

**HYUNDAI Starex**, 5-dr Van, 08 – (With dual sliding doors)

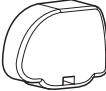
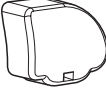





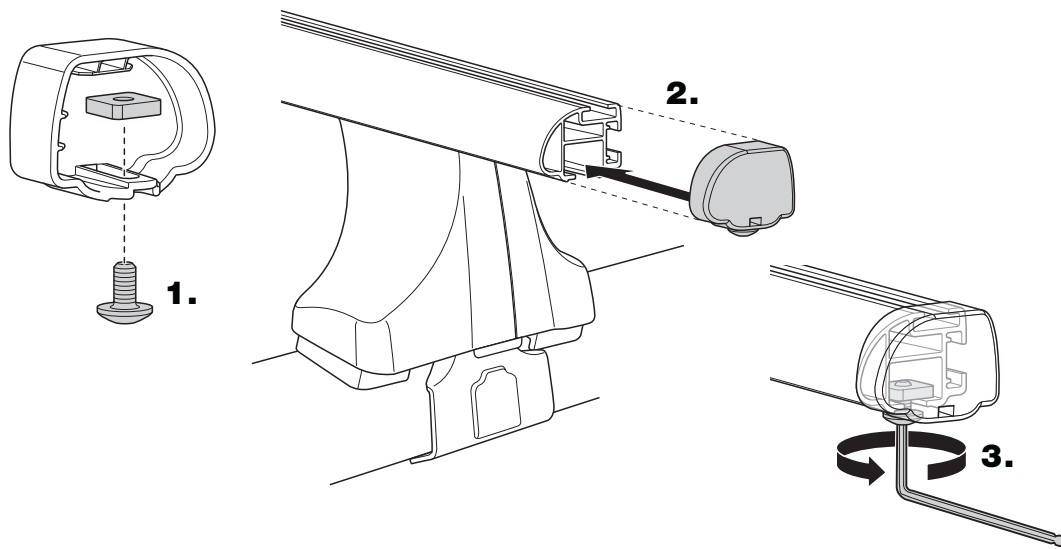
**6****HYUNDAI H-1**, 5-dr Van, 08 – (With dual sliding doors)**HYUNDAI iLoad**, 5-dr Van, 08 – (With dual sliding doors), (Asia)**HYUNDAI iMax**, 5-dr Bus, 08 – (With dual sliding doors), (Asia)**HYUNDAI Starex**, 5-dr Van, 08 – (With dual sliding doors)**7**

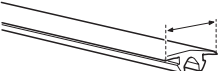
- GB** Tighten alternately  
**D** Die Schrauben abwechselnd anziehen  
**F** Serrer alternativement chaque côté  
**NL** Afwisselend aan de linker- en de rechterkant aandraaien  
**I** Serrare alternativamente  
**E** Alternare il serraggio delle viti  
**PT** Aperte alternadamente  
**S** Dra åt växelvis  
**FIN** Kierrä vuorotellen  
**EST** Pinguldage vaheldumisi  
**LAT** Pievelciēt pamišus  
**LIT** Užsukinėkite pakaitomis  
**PL** Śruby dokręcaj naprzemiennie  
**RU** Затягивайте попеременно  
**CZ** Pokręťta bagażníka dokręcaj dokręcaj naprzemiennie.  
**SK** Doťahujte striedavo  
**SLO** Privijajte izmenično.  
**HR** Naizmjenično zategnite  
**HU** Egymástól függetlenül szorítandó  
**GR** Σφίγγετε εναλλάξ  
**TR** Dönüşümlü sıkın  
**中文** 交替拧紧  
**한국어** 번갈아 가며 조이십시오.  
**日本語** 交互に締め付けてください。  
**ไทย** ชนไนแบบสลับ

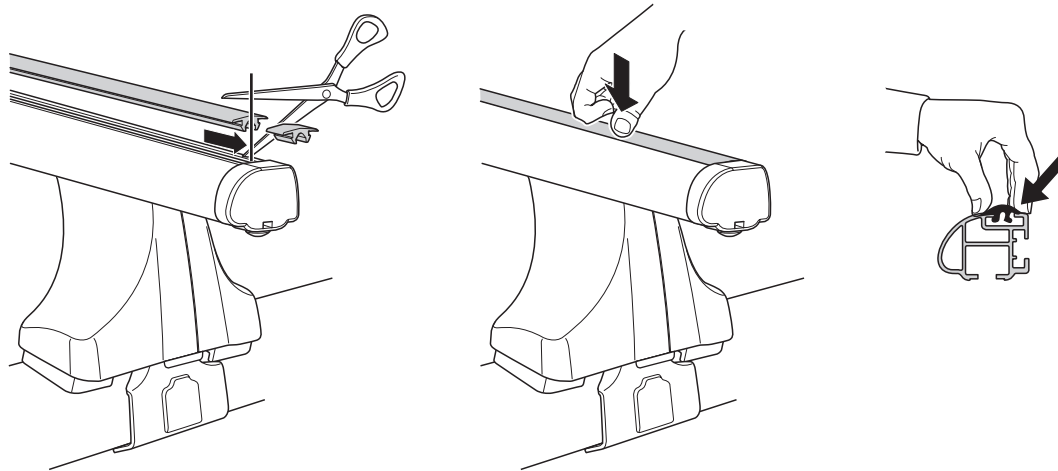


**8**

-  **x 2**
-  **x 2**
-  **x 4**
-  **x 4**
-  **x 1** 5mm

**9**

-  **x 2**  
25mm

**i**

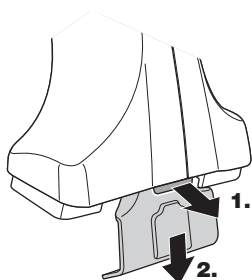
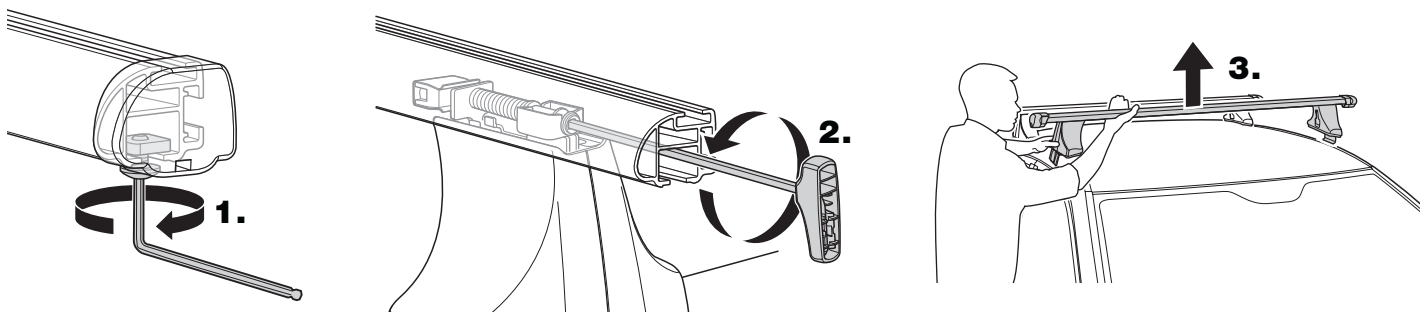
**GB** Removal  
**D** Demontieren  
**F** Démontage  
**NL** Demontage  
**I** Rimozione

**E** Desmontaje  
**PT** Remoção  
**S** Demontering  
**FIN** Irrotus  
**EST** Eemaldamine

**LAT** Noņemšana  
**LIT** Nuėmimas  
**PL** Wymontowywanie  
**RU** Снятие  
**CZ** Odmontování

**SK** Demontáž  
**SLO** Odstranjevanje  
**HR** Uklanjanje  
**HU** Leszerelés  
**GR** Αφαίρεση

**TR** Sökme  
 中文 拆除  
 日本語 取り外し  
 한국어 분리  
 ไทย การถอด



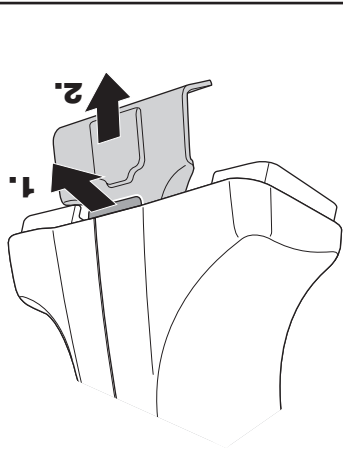
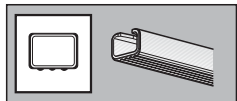
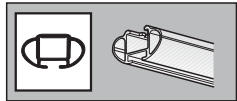
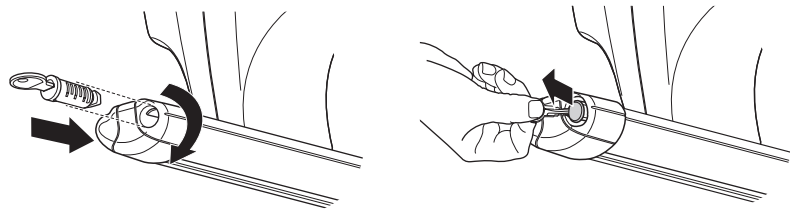
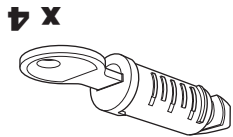




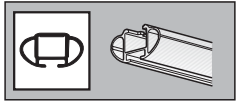
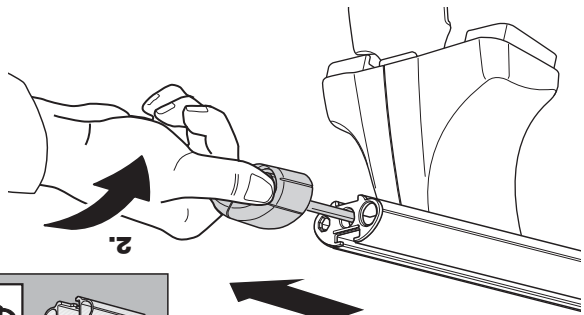
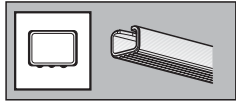
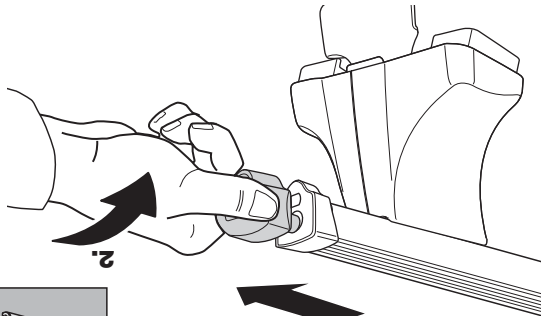
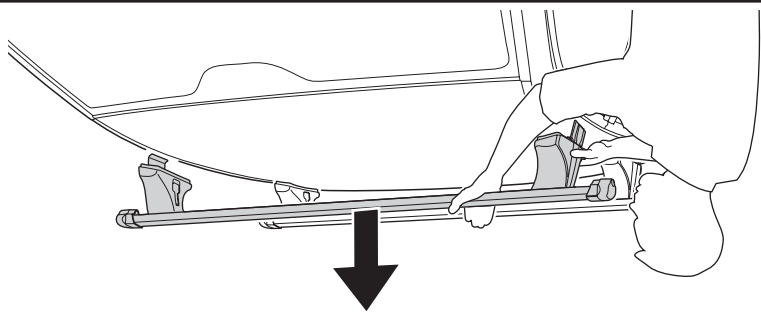
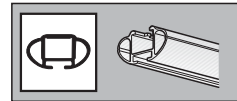
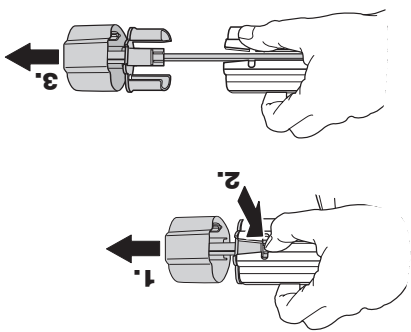
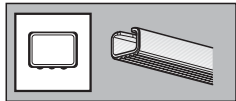
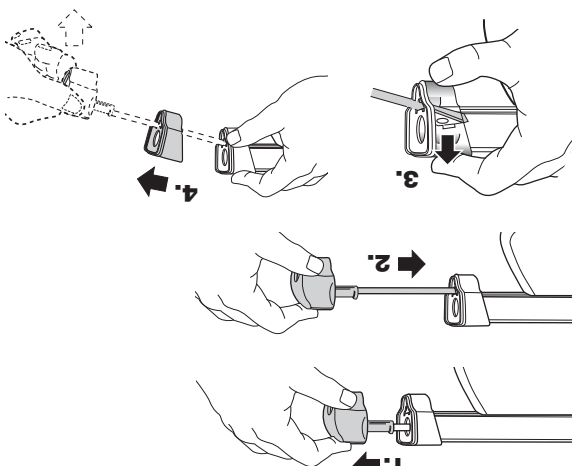




**THULE**  
ONE  
KEY  
SYSTEM



**Fit Tips!**



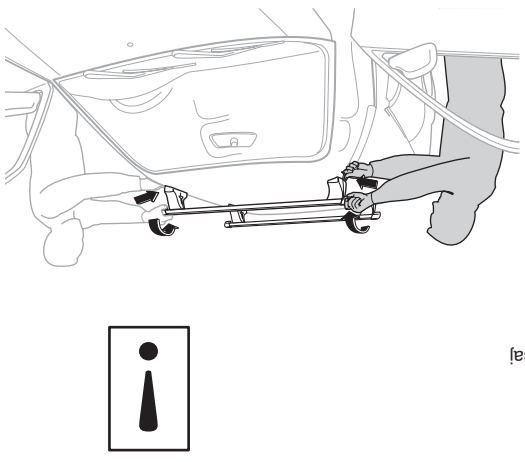
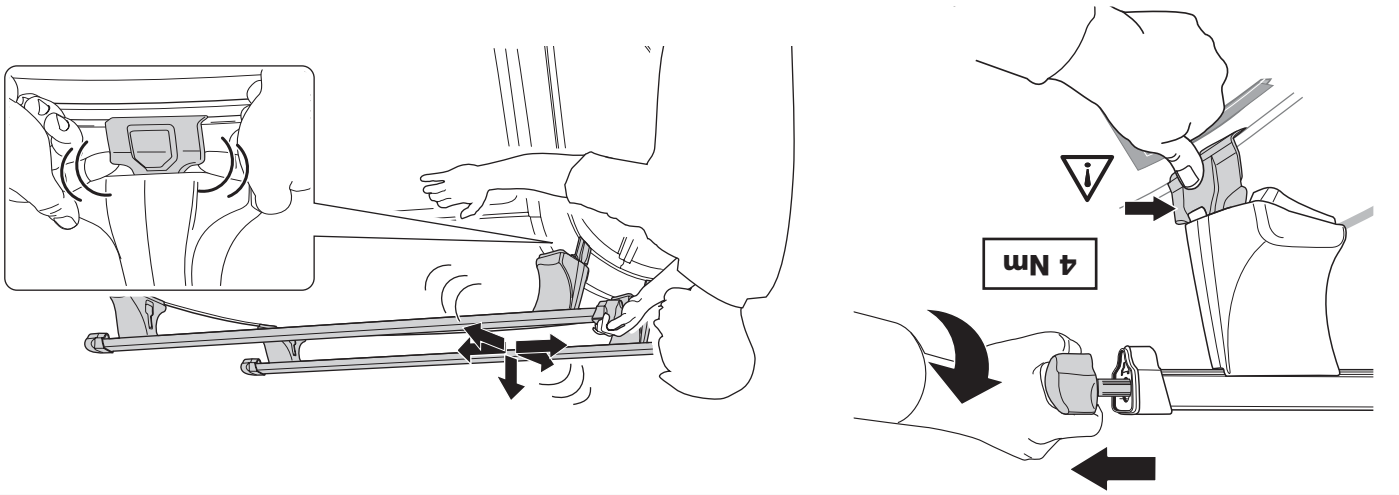
**GB** Removal  
**D** Demontieren  
**F** Démontage  
**NL** Demontage  
**I** Rimozione

**E** Desmontaje  
**PT** Remoção  
**S** Demontering  
**FIN** Irrotus  
**EST** Eemaldamine

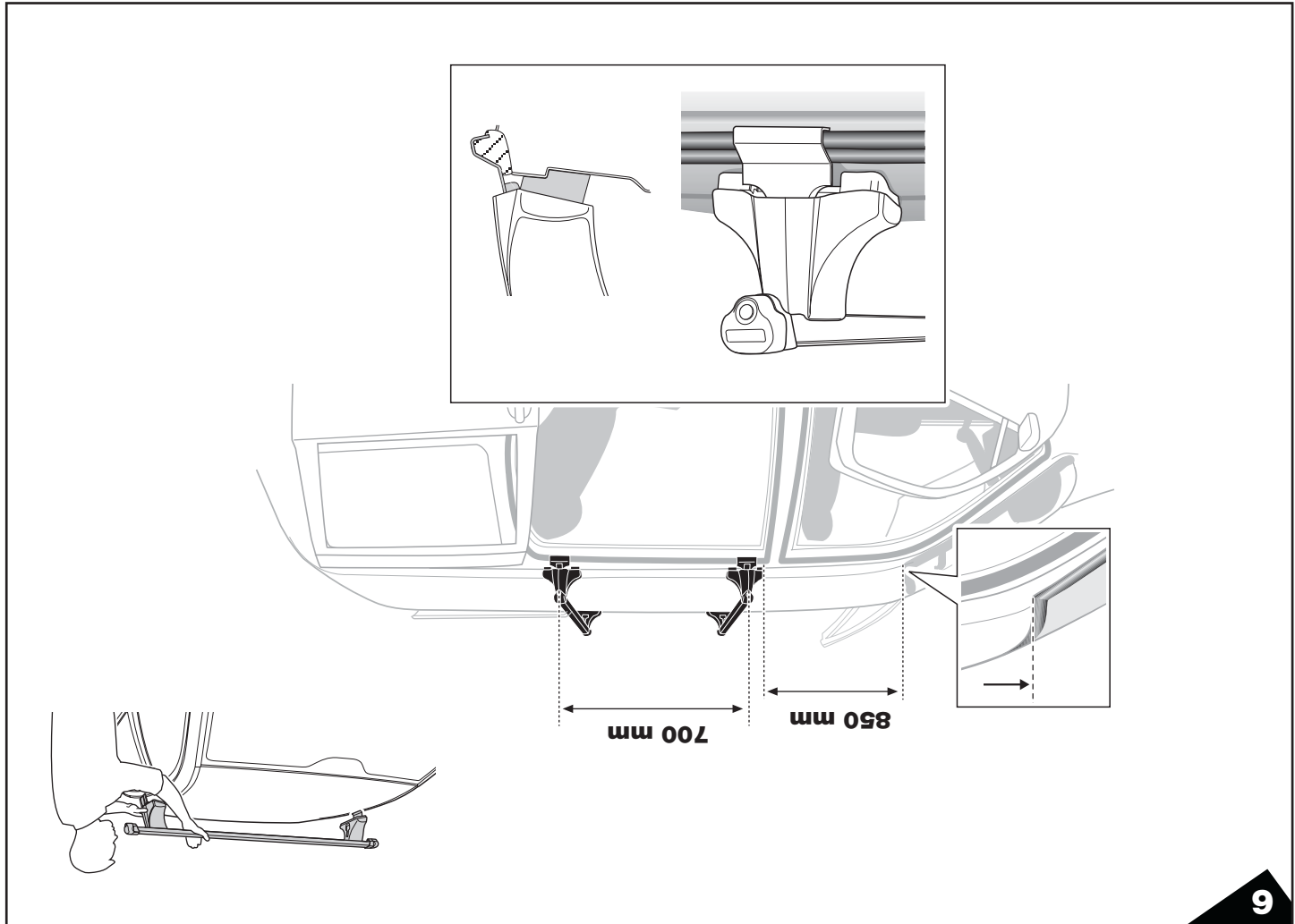
**LAT** Nolemšana  
**LIT** Nuėmimas  
**PL** Wymontowywanie  
**RU** Чартае  
**CZ** Odmontování

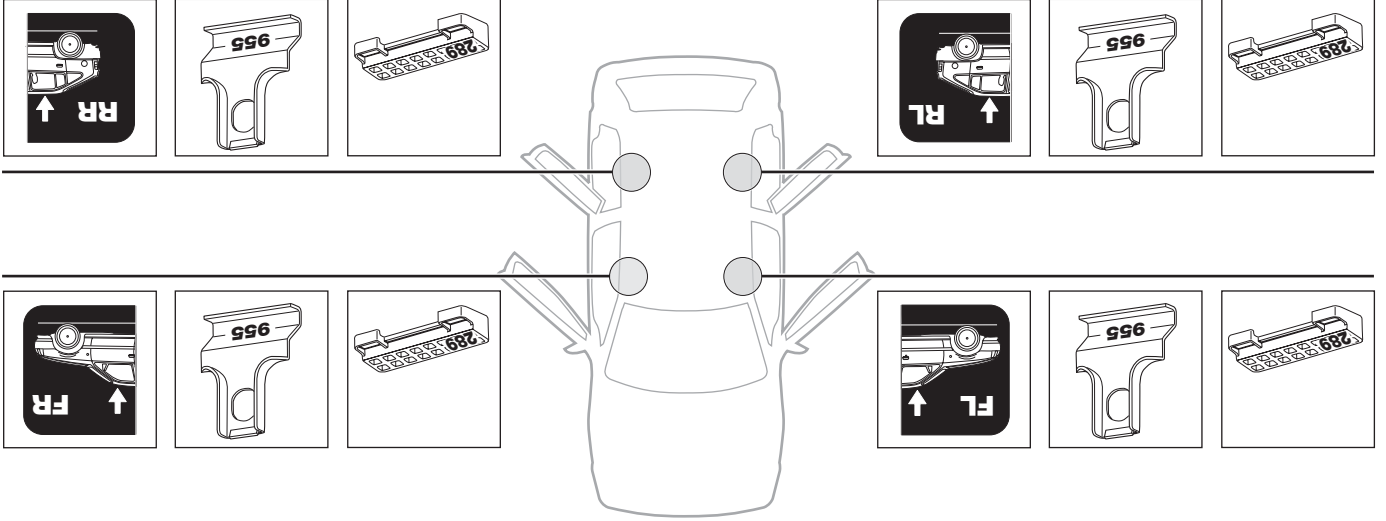
**SK** Demontáž  
**SLO** Odstranjevanje  
**HR** Uklanjanje  
**HU** Leszerelés  
**GR** Αφαιρέση

**TR** Sökme  
**中文** 拆除  
**日本語** 取り外し  
**한국어** 분리  
**ไทย** ถอดออก

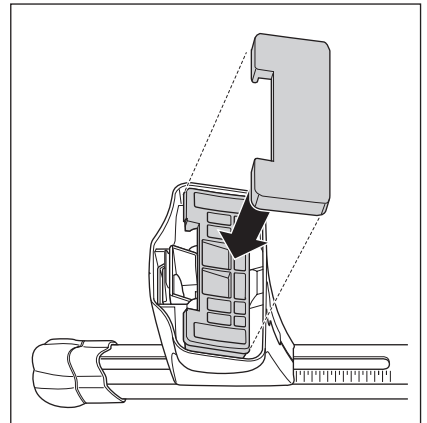
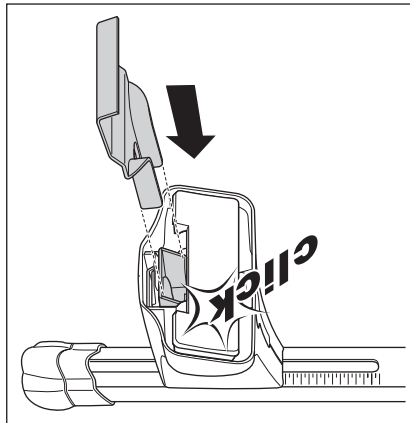
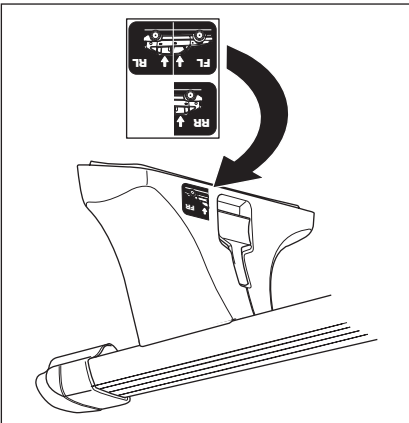


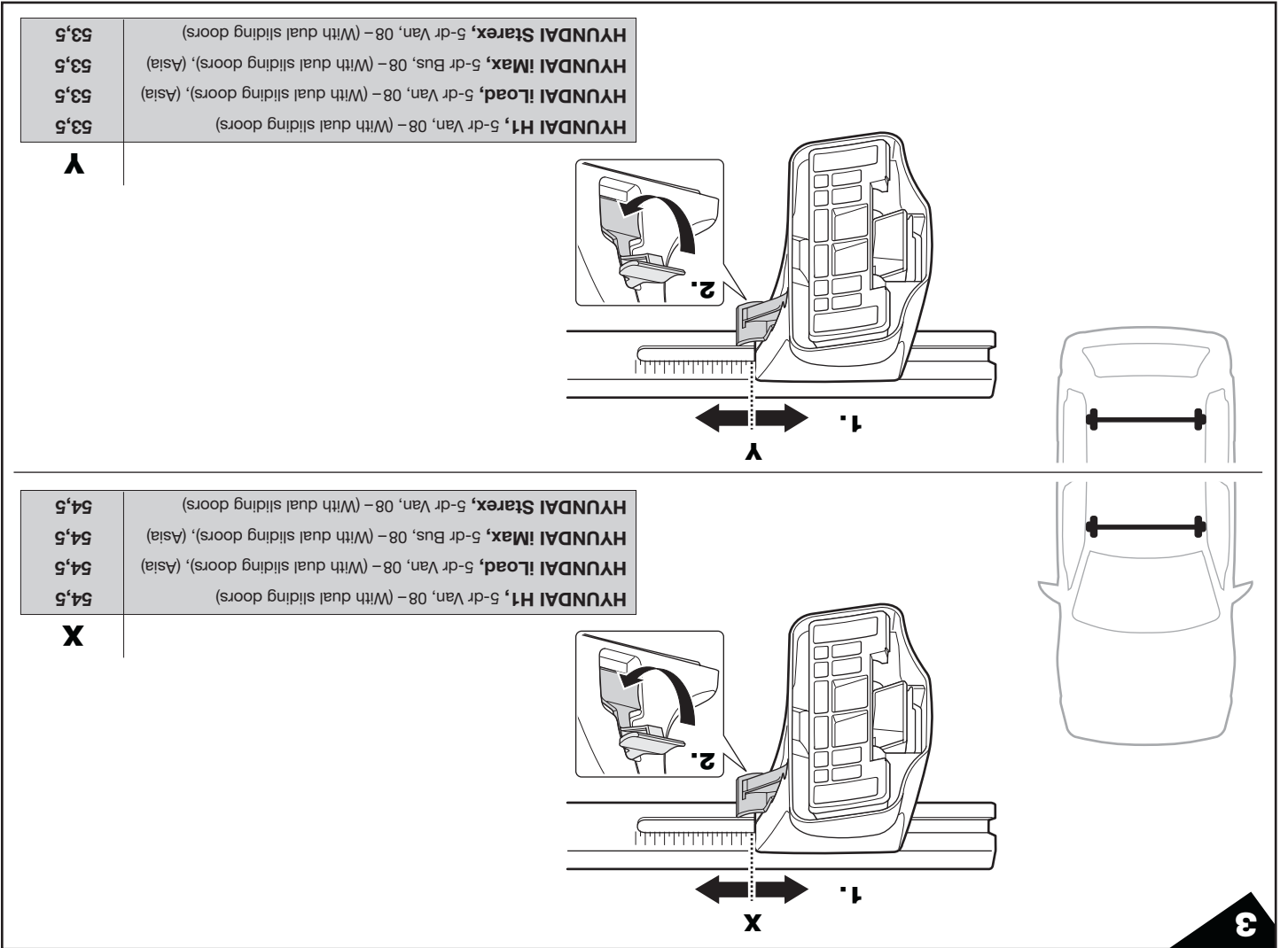
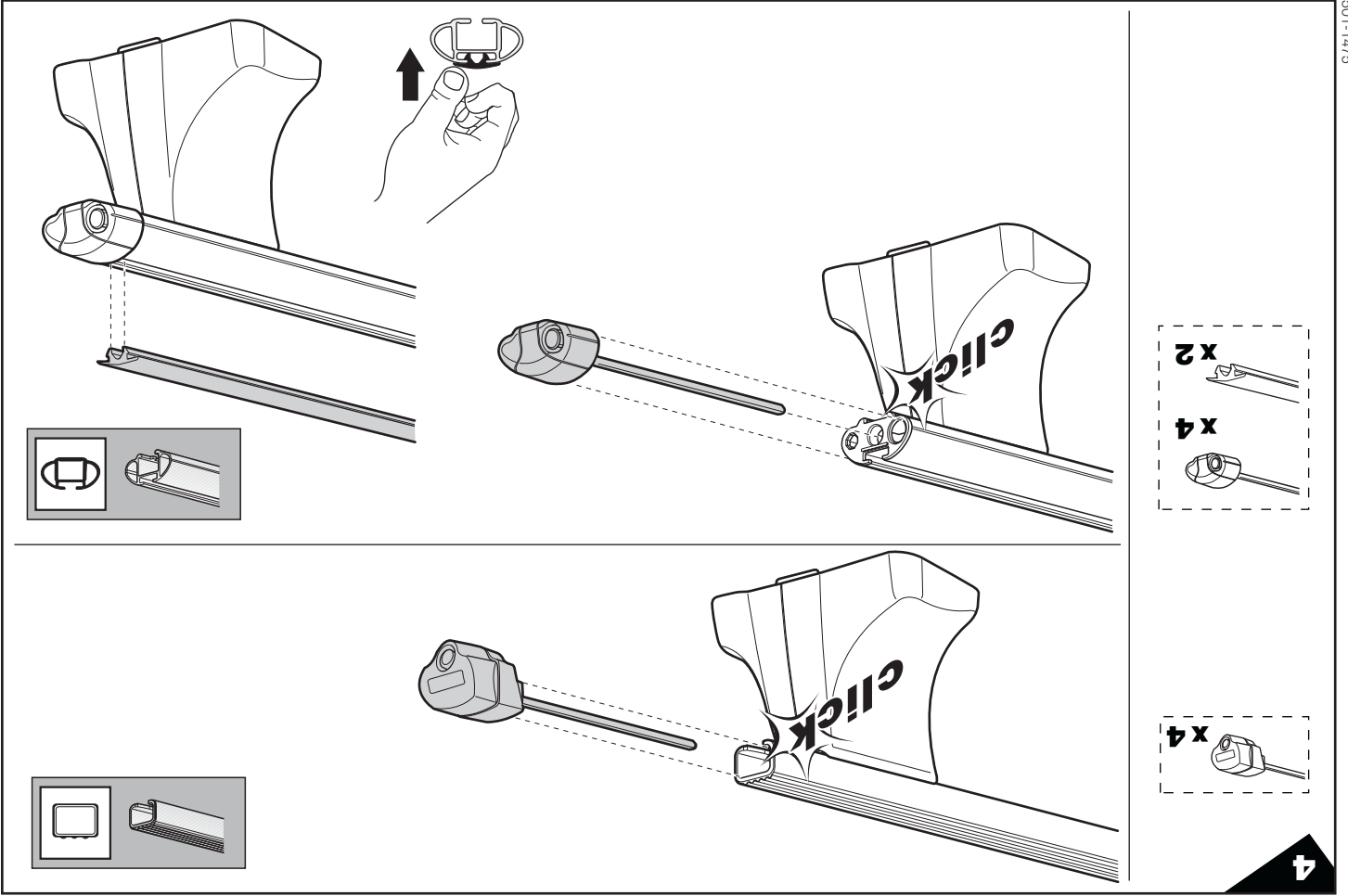
- |            |  |            |   |
|------------|--|------------|---|
| <b>PL</b>  | Śruby dokręcaj naprzemiennie                       | <b>GB</b>  | Tighten alternately                                     |
| <b>RU</b>  | Затягивайте попеременно                            | <b>D</b>   | Die Schrauben abwechselnd anziehen                      |
| <b>CZ</b>  | Pokrétá bagazníka dokrécáj dokrécáj naprzemiennie. | <b>F</b>   | Serrer alternativement chaque côté                      |
| <b>SK</b>  | Dotahujte striedavo.                               | <b>NL</b>  | Afwisselend aan de linker- en de rechterkant aandraaien |
| <b>SLO</b> | Privijajte izmenično.                              | <b>I</b>   | Serrare alternativamente                                |
| <b>HR</b>  | Naizmenično zategnite.                             | <b>E</b>   | Alternare il serraggio delle viti                       |
| <b>HU</b>  | Egy mástól fűggetlenül szorítandó                  | <b>PT</b>  | Aperte alternadamente                                   |
| <b>GR</b>  | Σφύγγετε εναλλάξ.                                  | <b>S</b>   | Dra åt växelsvis  |
| <b>TR</b>  | Dönüşümüü sikin                                    | <b>FIN</b> | Kierrä vuorotellen                                      |
| <b>中文</b>  | 交替拧紧   | <b>EST</b> | Pinguldage vaheldumisi                                  |
| <b>한국어</b> | 편갈아 가며 조이십시오.                                      | <b>LAT</b> | Pievēliet pamāsus                                       |
| <b>日本語</b> | 交互に締め付けてください。                                      | <b>LIT</b> | Užsukinkite pakaitomis                                  |
| <b>ไทย</b> | หมุนวนกันไป  |            |   |





**HYUNDAI H-1**, 5-dr Van, 08 – (With dual sliding doors)  
**HYUNDAI iLoad**, 5-dr Van, 08 – (With dual sliding doors), (Asia)  
**HYUNDAI iMax**, 5-dr Bus, 08 – (With dual sliding doors), (Asia)  
**HYUNDAI Starex**, 5-dr Van, 08 – (With dual sliding doors)



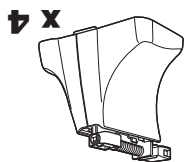
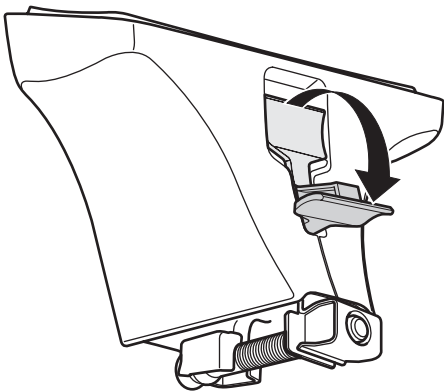
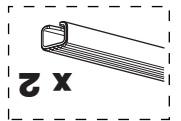
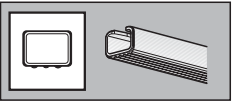
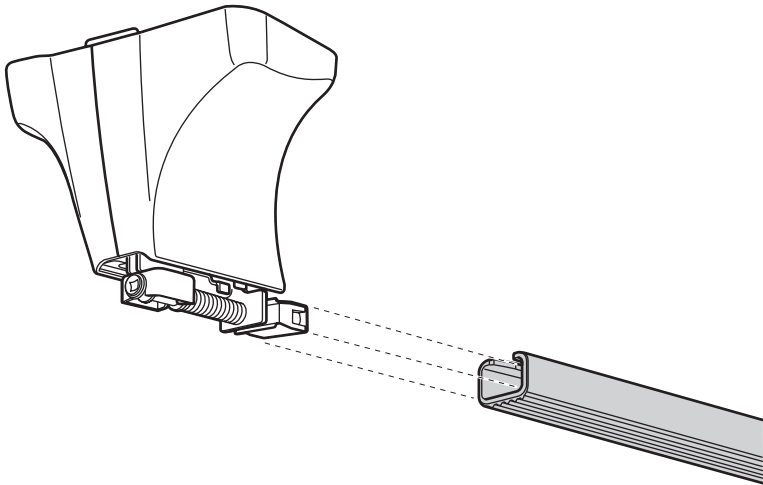
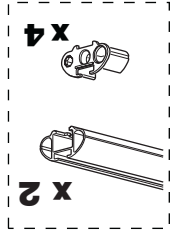
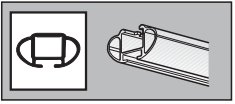
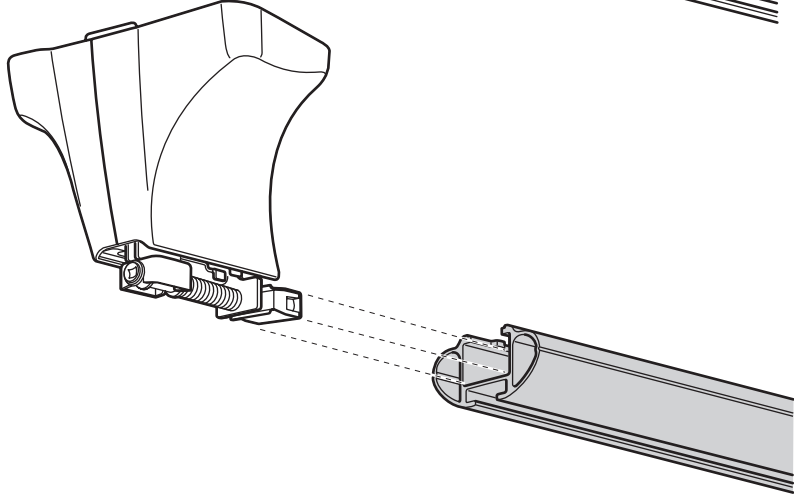
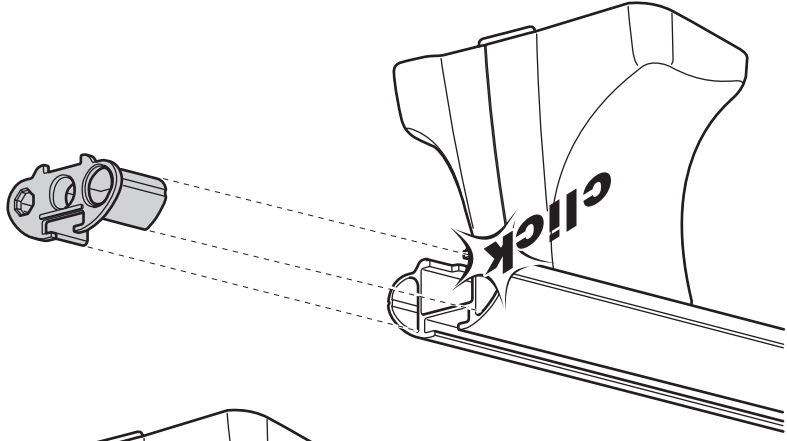


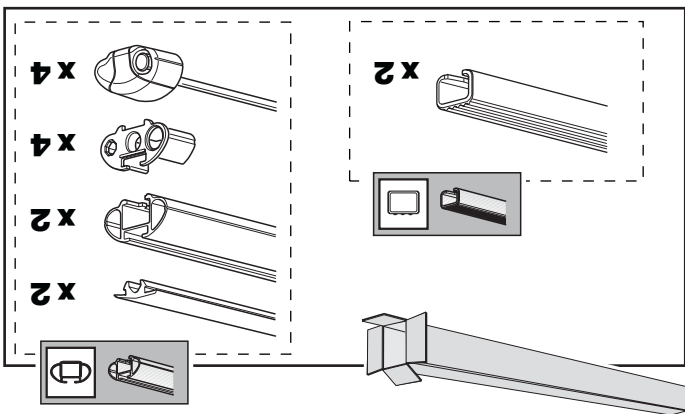
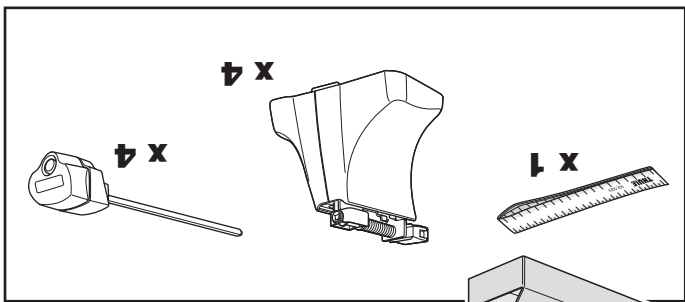
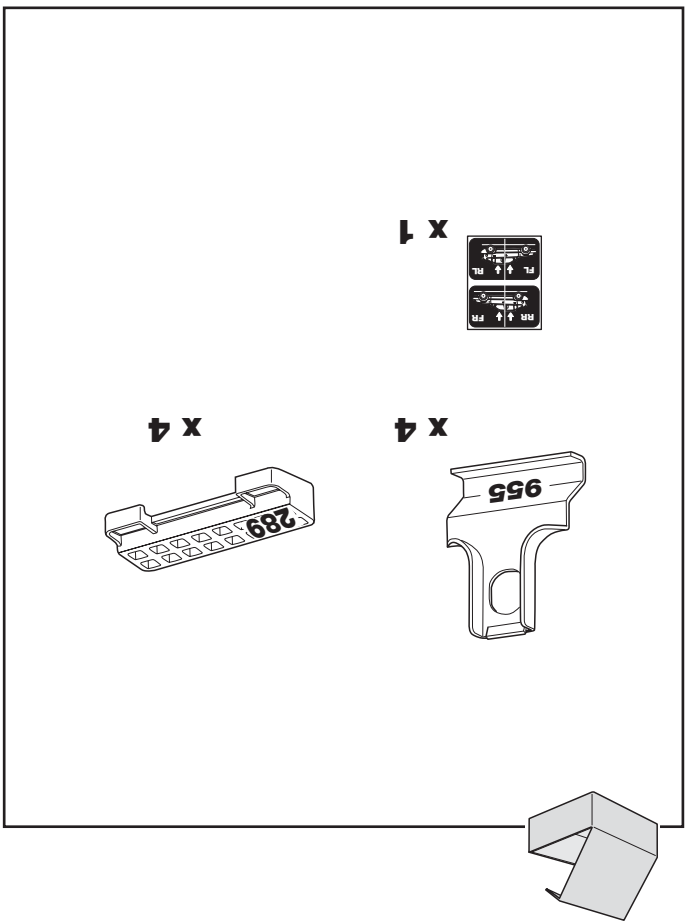
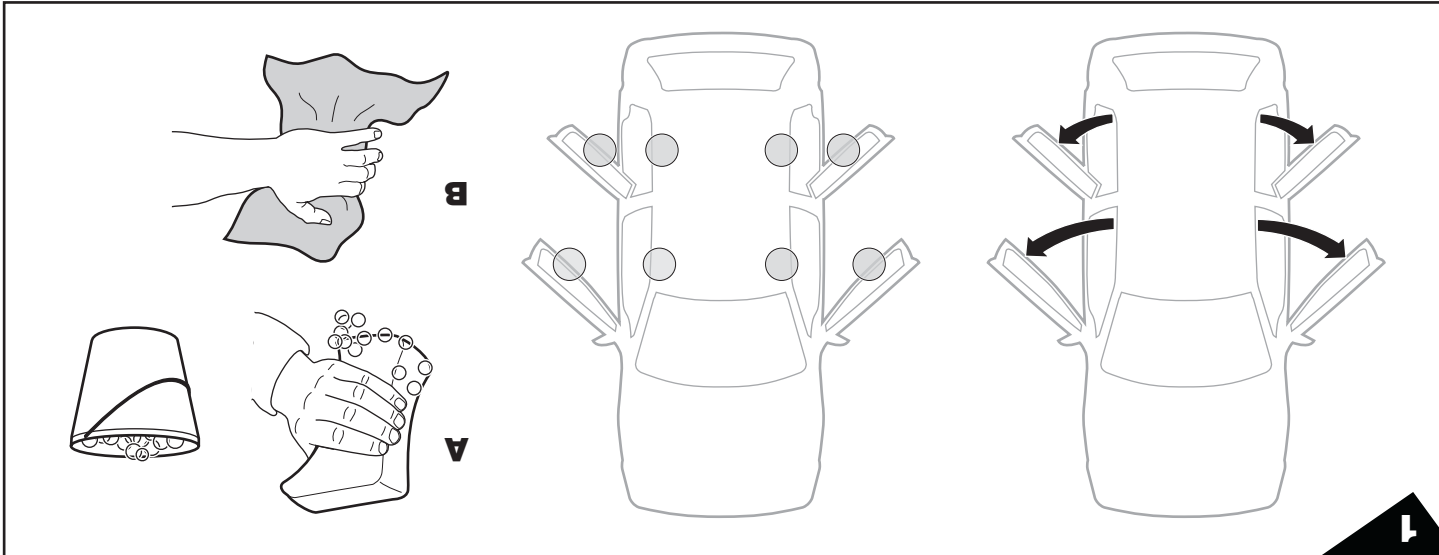
53,5	HYUNDAI H1, 5-dr Van, 08 - (With dual sliding doors)
53,5	HYUNDAI iLoad, 5-dr Van, 08 - (With dual sliding doors), (Asia)
53,5	HYUNDAI iMax, 5-dr Bus, 08 - (With dual sliding doors), (Asia)
53,5	HYUNDAI Starex, 5-dr Van, 08 - (With dual sliding doors)


Y

54,5	HYUNDAI H1, 5-dr Van, 08 - (With dual sliding doors)
54,5	HYUNDAI iLoad, 5-dr Van, 08 - (With dual sliding doors), (Asia)
54,5	HYUNDAI iMax, 5-dr Bus, 08 - (With dual sliding doors), (Asia)
54,5	HYUNDAI Starex, 5-dr Van, 08 - (With dual sliding doors)

X







**3** Складова частина  
Складніть відповідні  
Скритики, використовуючи  
Інструмент з роз'ємом  
THULE.

**2** Тримайте автомобільні  
Інструменти відповідно до  
THULE.

**1** Нанесіть на металеві  
Скритики відповідні  
THULE.

**08** Контрикі з'єднанні  
Контрикі з'єднанні  
Контрикі з'єднанні

**07** Контрикі з'єднанні  
Контрикі з'єднанні  
Контрикі з'єднанні

**06** Контрикі з'єднанні  
Контрикі з'єднанні  
Контрикі з'єднанні


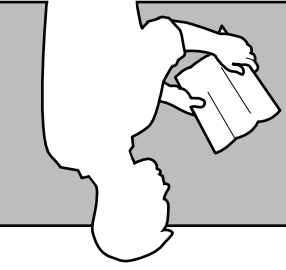
**05** Контрикі з'єднанні  
Контрикі з'єднанні  
Контрикі з'єднанні

**04** Контрикі з'єднанні  
Контрикі з'єднанні  
Контрикі з'єднанні

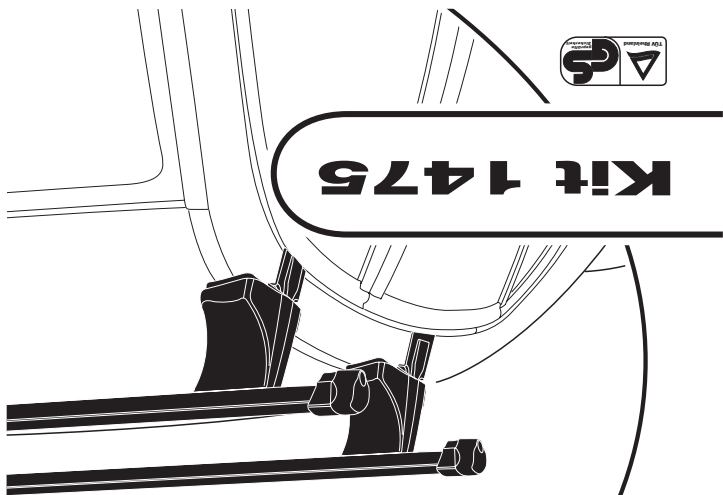
**03** Контрикі з'єднанні  
Контрикі з'єднанні  
Контрикі з'єднанні

**02** Контрикі з'єднанні  
Контрикі з'єднанні  
Контрикі з'єднанні

**01** Контрикі з'єднанні  
Контрикі з'єднанні  
Контрикі з'єднанні

**Follow me...**



**Kit 1475**

**RAPID SYSTEM**

- HYUNDAI H-1, 5-dr Van, 08 – (With dual sliding doors)*
- HYUNDAI iLoad, 5-dr Van, 08 – (With dual sliding doors), (Asia)*
- HYUNDAI iMax, 5-dr Bus, 08 – (With dual sliding doors), (Asia)*
- HYUNDAI Starex, 5-dr Van, 08 – (With dual sliding doors)*

- GB Fitting instructions
- D Montagelanleitung
- F Instructions de montage
- NL Montage-instructies
- I Istruzioni per il montaggio
- E Instrucciones de montaje
- PT Instruções de Montagem
- S Monteringsanvisning
- FIN Asennusohje
- EST Paigaldusjuhend
- LAT Stiprināšanas instrukcija
- LIT Pritvirtinimo instrukcijos
- PL Instrukcja montażu
- RU Инструкции по установке
- CZ Návod na montáž
- SK Návod na montáž
- SLO Navodila za pritrjevanje
- HR Uputa za sastavljanje
- HU A felszerelés módja
- GR Οδηγίες συναρμολόγησης
- TR Montaj talimatları
- 中文 安装说明
- 日本語 取扱(取付)説明書
- 한국어 설치지침
- ไทย 11111111111111111111

