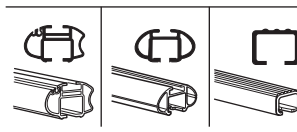
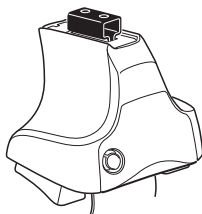


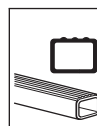
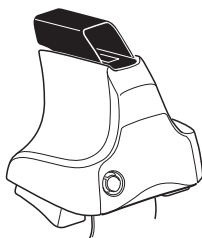
# Kit 1385

TOYOTA Rav 4 (Mk.III.), 5-dr SUV, 05–  
TOYOTA Vanguard, 5-dr SUV, 07–

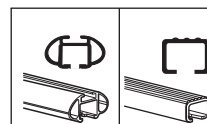
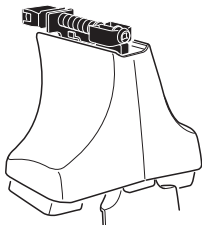
480R  
754



480



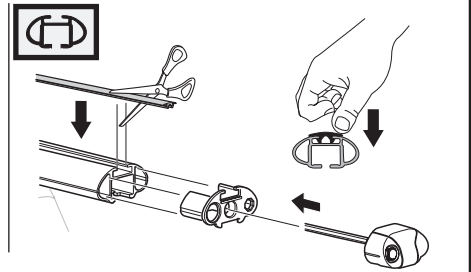
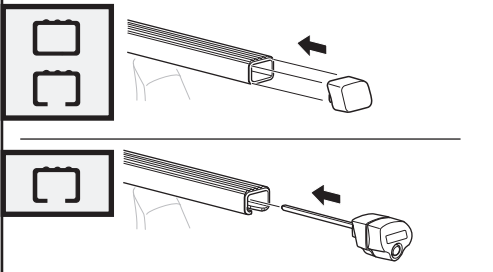
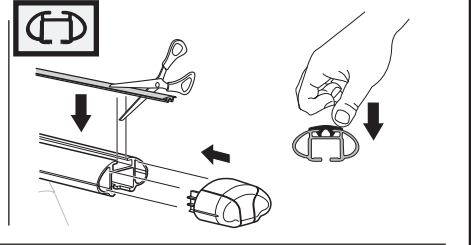
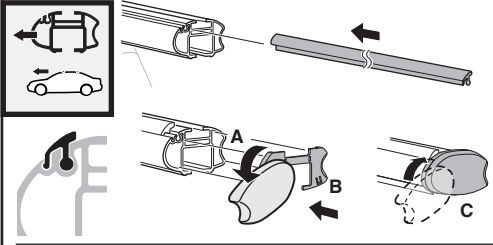
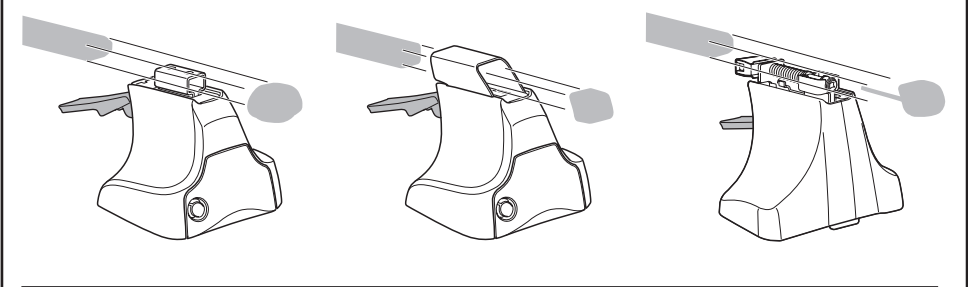
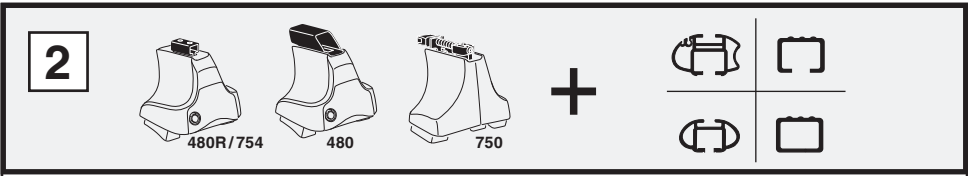
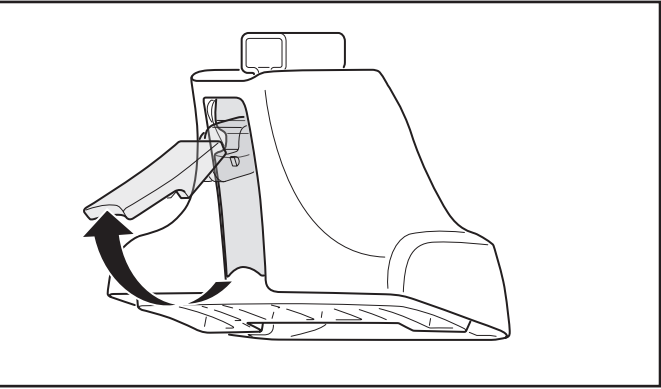
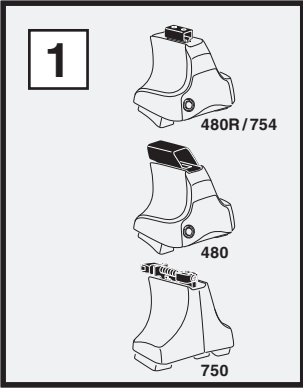
750



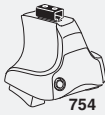
**THULE**<sup>®</sup>  
SWEDEN

ISO 1154-E

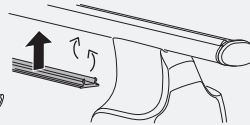
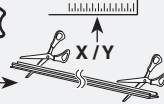
**Kit**



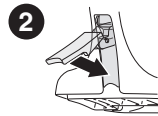
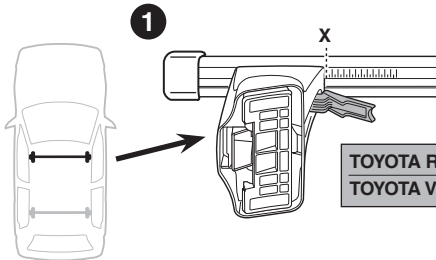
**3**



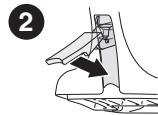
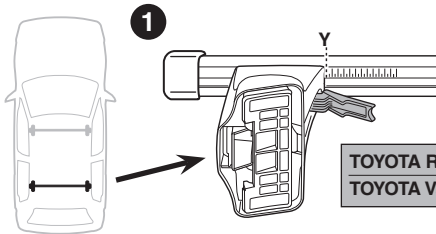
754



750



	X
TOYOTA Rav 4 (Mk.III.), 5-dr SUV, 05-	40
TOYOTA Vanguard, 5-dr SUV, 07-	40



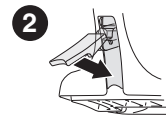
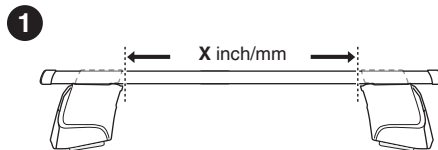
	Y
TOYOTA Rav 4 (Mk.III.), 5-dr SUV, 05	36
TOYOTA Vanguard, 5-dr SUV, 07-	36



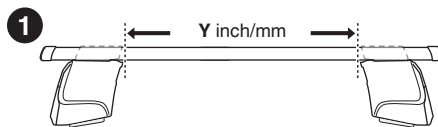
480R



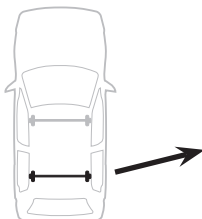
480



	X inch	X mm
TOYOTA Rav 4 (Mk.III.), 5-dr SUV, 05	41 <sup>3</sup> / <sub>8</sub> "	1051 mm
TOYOTA Vanguard, 5-dr SUV, 07-	41 <sup>3</sup> / <sub>8</sub> "	1051 mm

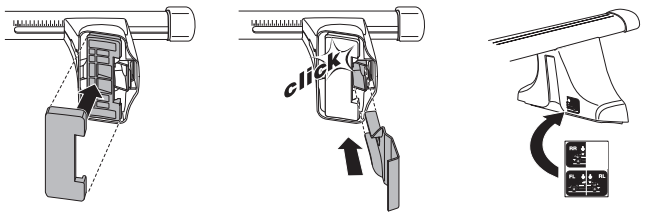
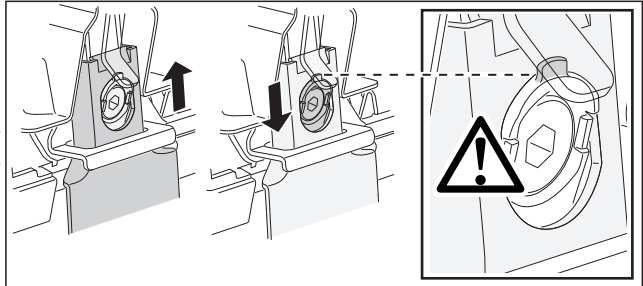
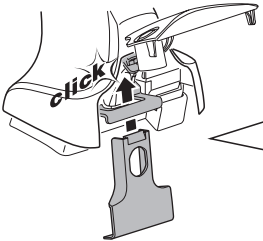
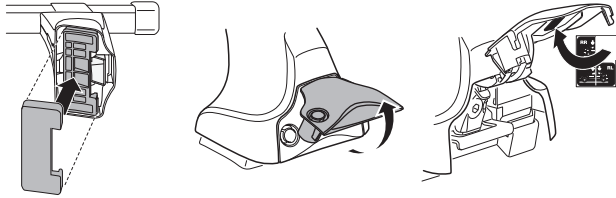
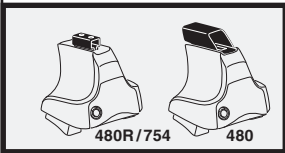
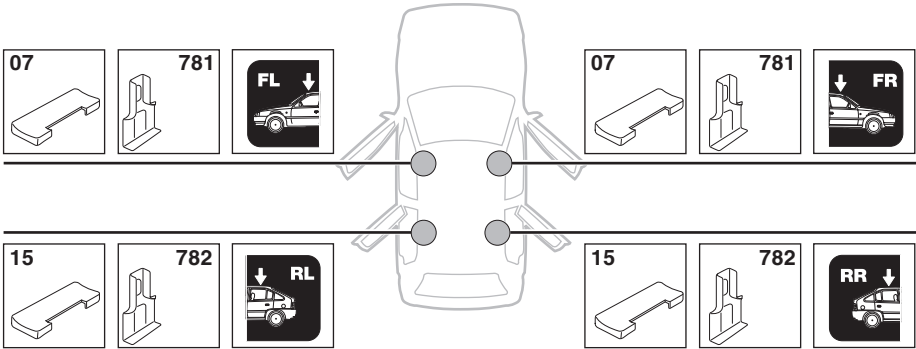


	Y inch	Y mm
TOYOTA Rav 4 (Mk.III.), 5-dr SUV, 05	39 <sup>3</sup> / <sub>4</sub> "	1011 mm
TOYOTA Vanguard, 5-dr SUV, 07-	39 <sup>3</sup> / <sub>4</sub> "	1011 mm

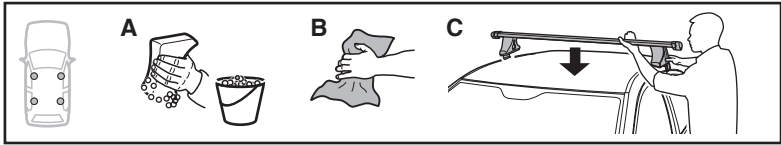


# 4

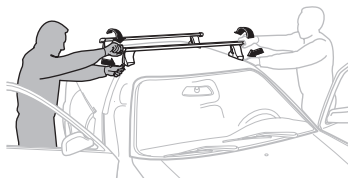
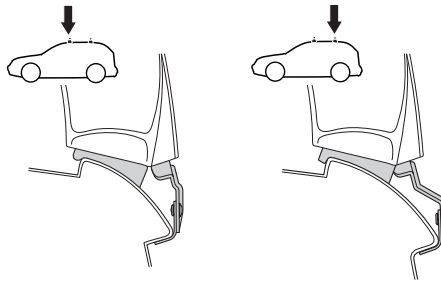
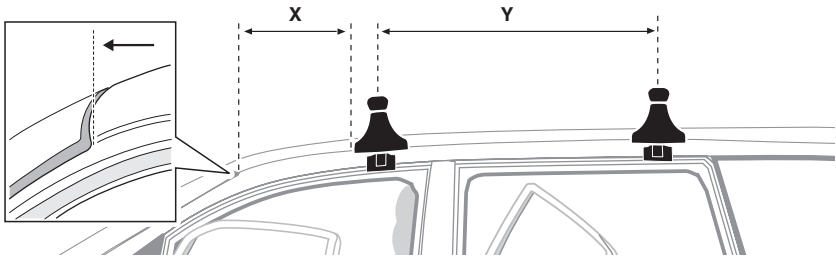
TOYOTA Rav 4 (Mk.III.), 5-dr SUV, 05–  
 TOYOTA Vanguard, 5-dr SUV, 07–



5



	X mm	Y mm	X inch	Y inch
TOYOTA Rav 4 (Mk.III.), 5-dr SUV, 05	470 mm	710 mm	18 1/2"	28"
TOYOTA Vanguard, 5-dr SUV, 07-	470 mm	710 mm	18 1/2"	28"



**GB/US** Tighten alternately

**D** Die Schrauben abwechselnd anziehen

**F** Serrer alternativement chaque côté

**NL** Afwisselend aan de linker- en de rechterkant aandraaien

**I** Alternare il serraggio delle viti

**E** Apretar alternativamente

**PT** Aperte alternadamente

**S** Dra åt växelvis

**FIN** Kierrä vuorotellen

**EST** Pinguldage vaheldumisi

**LAT** Pielvelciet pamīšus

**LIT** Užsukinėkite pakaitomis

**PL** Śruby dokręcaj naprzemiennie

**RU** Затягивайте попеременно

**CZ** Pokręťta bagażníka dokręcaj dokręcaj naprzemiennie.

**SK** Doťahujte striedavo

**SLO** Privijajte izmenično.

**HR** Naizmjenično zategnite

**HU** Egymástól függetlenül szorítandó

**GR** Σφίγγετε εναλλάξ

**TR** Dönüşümlü sıkın

**中文** 交替拧紧

**한국어** 번갈아 가며 조이십시오.

**日本語** 交互に締め付けてください。

**ไทย** ชั้้นโน้แบบสลับ

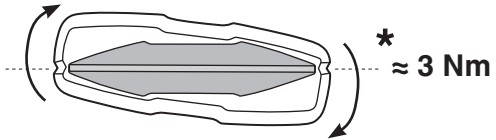
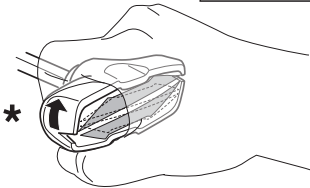
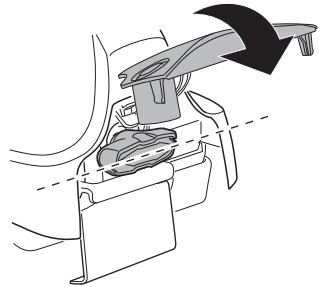
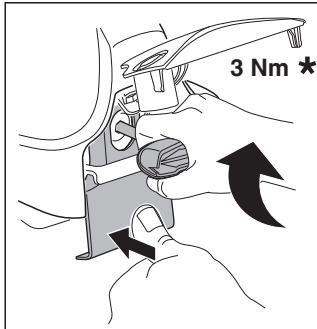
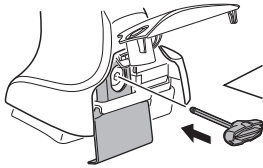
6



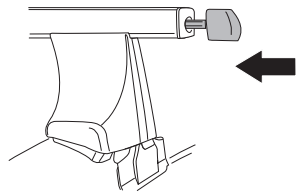
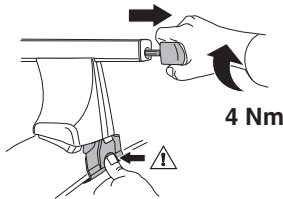
480R/754



480



750



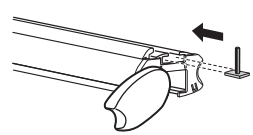
i



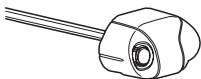
1



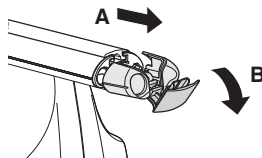
2



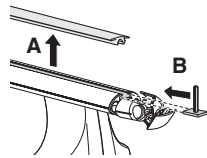
i



1



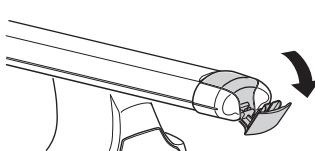
2



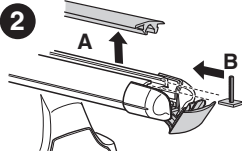
i

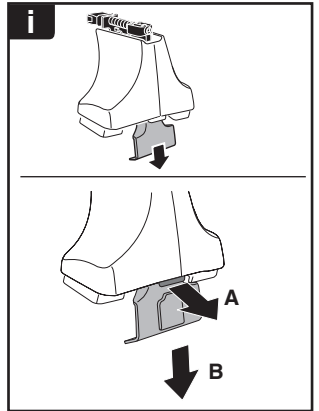


1

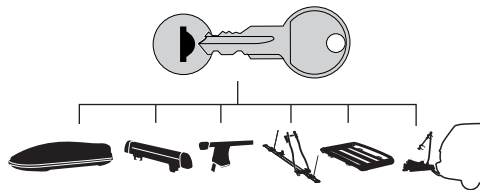


2





**THULE**  
SWEDEN  
**ONE  
KEY  
SYSTEM**



- 544 (x4)
- 596 (x6)
- 588 (x8)
- NA 510 (x10)
- EUR 452 (x12)
- ASIA



WW ▶ Thule Sweden AB, Box 69, 330 33 Hillerstorp, SWEDEN  
NA ▶ Thule Inc., 42 Silvermine Road, Seymour, Connecticut 06483, USA

info@thule.com  
customer.service@thule.com

www.thule.com