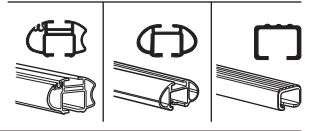
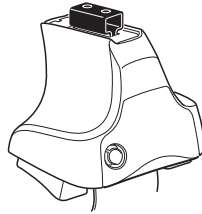


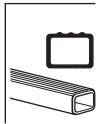
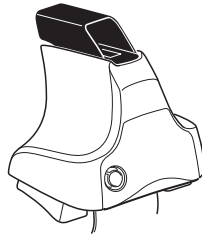
# Kit 1308

LEXUS ES 300, 4-dr Sedan, 02-06

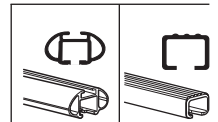
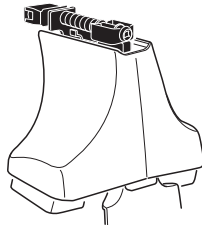
480R  
754



480



750



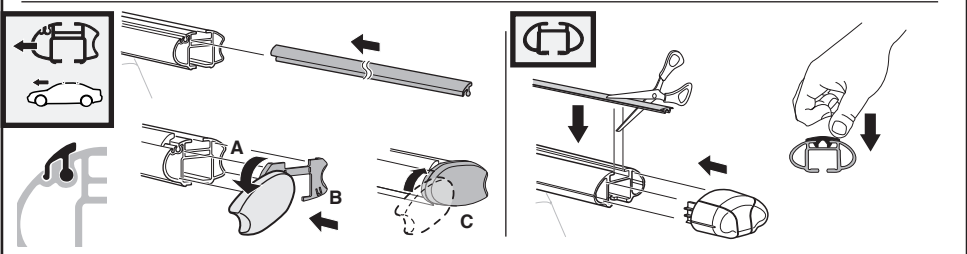
x2 x2 x2 x4	x2	x2 x2 x4 x4	x2 x2	x2

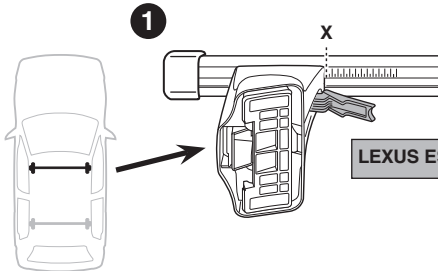
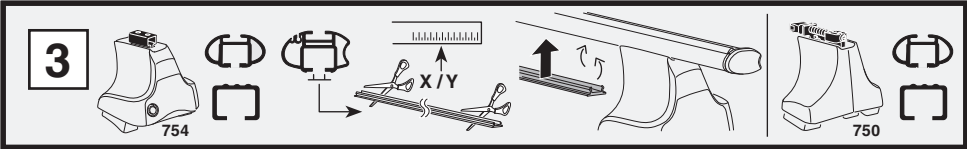
x 4

x 4

x 1

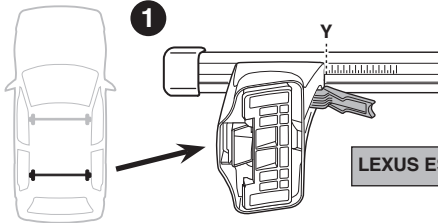
**Kit**





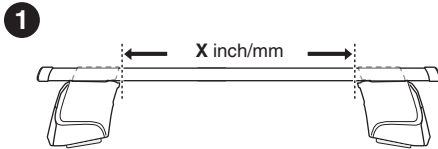
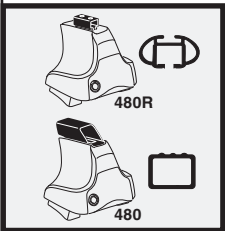
LEXUS ES 300, 4-dr Sedan, 02-06

X  
35,5



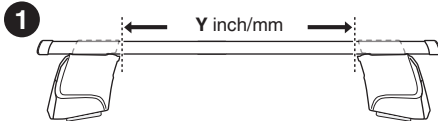
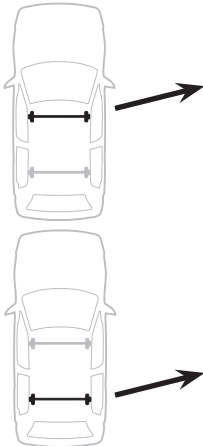
LEXUS ES 300, 4-dr Sedan, 02-06

Y  
36,5



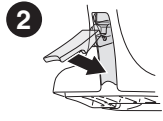
LEXUS ES 300, 4-dr Sedan, 02-06

X inch	X mm
39 5/8"	1006 mm



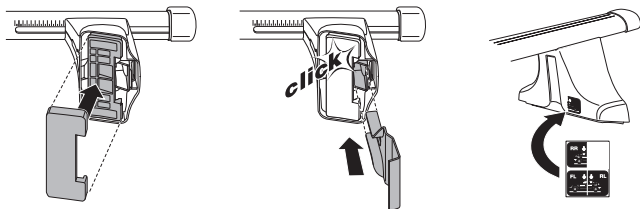
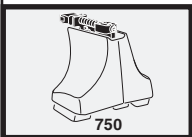
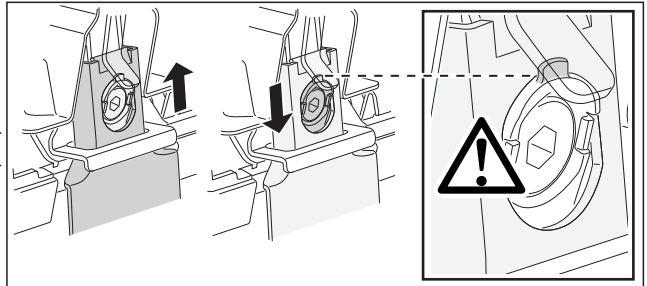
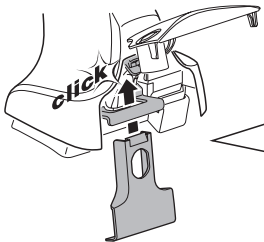
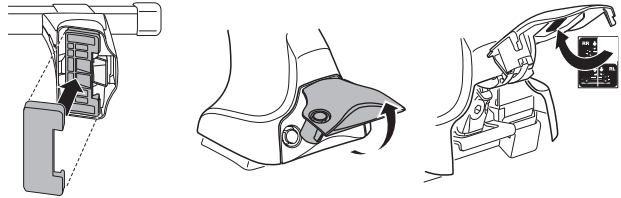
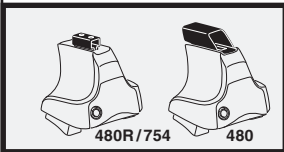
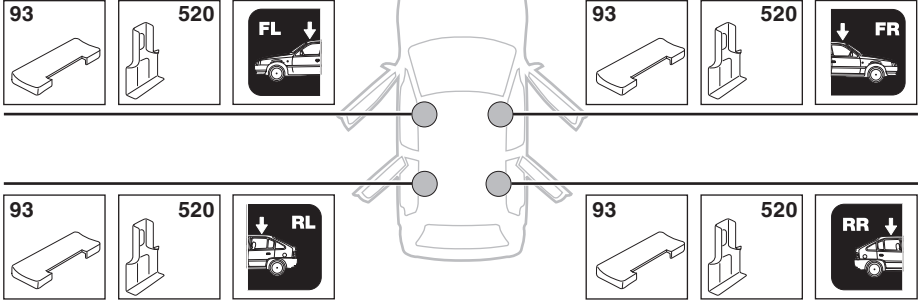
LEXUS ES 300, 4-dr Sedan, 02-06

Y inch	Y mm
40"	1016 mm

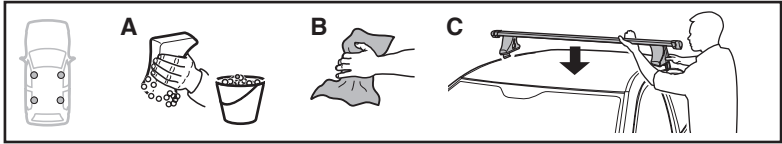


4

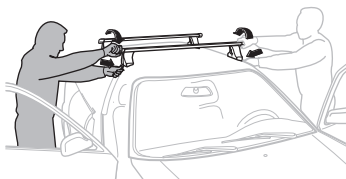
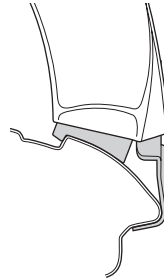
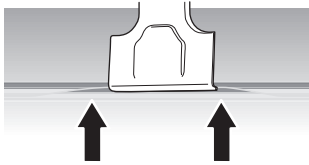
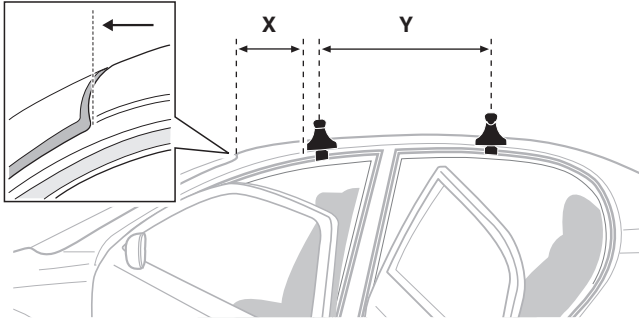
LEXUS ES 300, 4-dr Sedan, 02-06



5



	X mm	Y mm	X inch	Y inch
LEXUS ES 300, 4-dr Sedan, 02-06	230 mm	670 mm	9"	26 <sup>3</sup> / <sub>8</sub> "



**GB/US** Tighten alternately

**D** Die Schrauben abwechselnd anziehen

**F** Serrer alternativement chaque côté

**NL** Afwisselend aan de linker- en de rechterkant aandraaien

**I** Alternare il serraggio delle viti

**E** Apertar alternativamente

**PT** Aperte alternadamente

**S** Dra åt växelvis

**FIN** Kierrä vuorotellen

**EST** Pinguldage vaheldumisi

**LAT** Pieveļciet pamišus

**LIT** Užsukinėkite pakaitomis

**PL** Śruby dokręcaj naprzemiennie

**RU** Затягивайте попеременно

**CZ** Pokręťta bagażníka dokręcaj dokręcaj naprzemiennie.

**SK** Doťahujte striedavo

**SLO** Privijajte izmenično.

**HR** Naizmjenično zategnite

**HU** Egymástól függetlenül szorítandó

**GR** Σφιγγετε εναλλάξ

**TR** Dönüşümlü sıkın

**中文** 交替拧紧

**한국어** 번갈아 가며 조이십시오.

**日本語** 交互に締め付けてください。

**ไทย** ชันในแบบสลับ

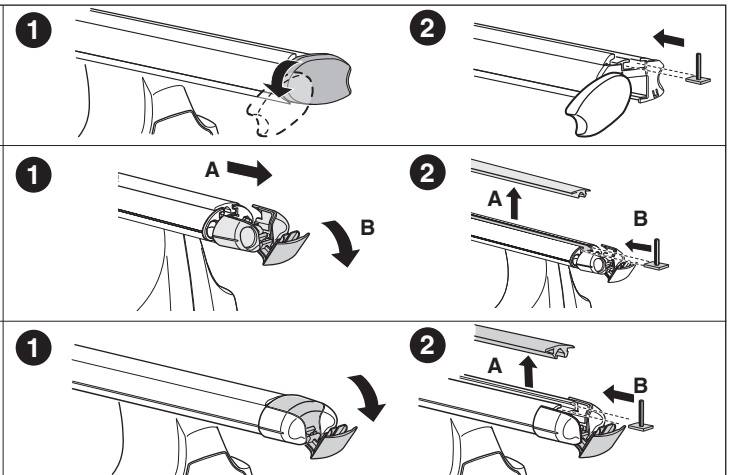
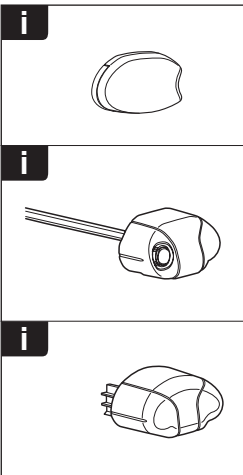
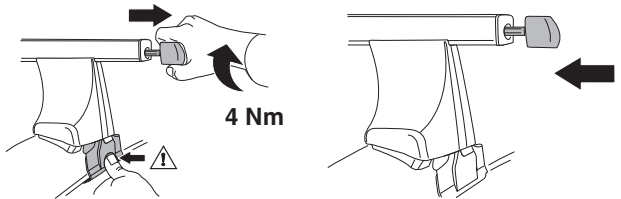
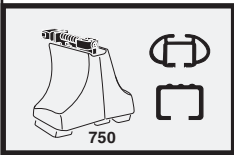
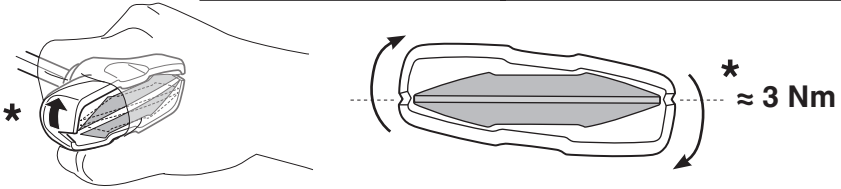
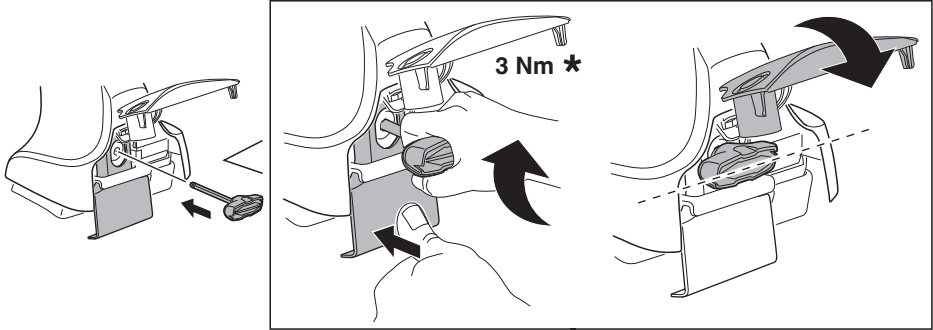
6

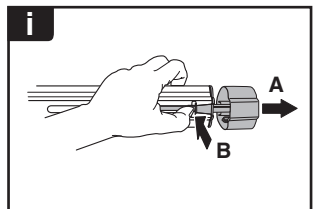
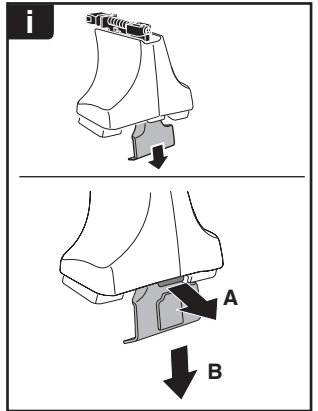


480R/754

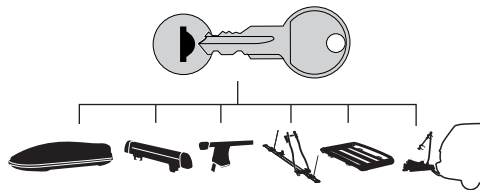


480





**THULE**  
SWEDEN  
**ONE  
KEY  
SYSTEM**



- 544 (x4)
- 596 (x6)
- 588 (x8)
- NA 510 (x10)
- EUR 452 (x12)
- ASIA



WW ▶ Thule Sweden AB, Box 69, 330 33 Hillerstorp, SWEDEN  
NA ▶ Thule Inc., 42 Silvermine Road, Seymour, Connecticut 06483, USA

info@thule.com  
customer.service@thule.com

www.thule.com