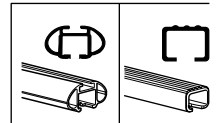
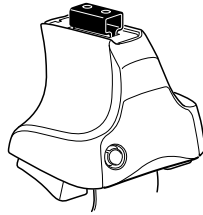


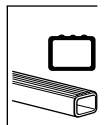
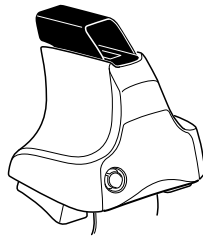
# Kit 1268

TOYOTA Ist (Mk.I.), 5-dr Hatchback, 02-07

480R  
754

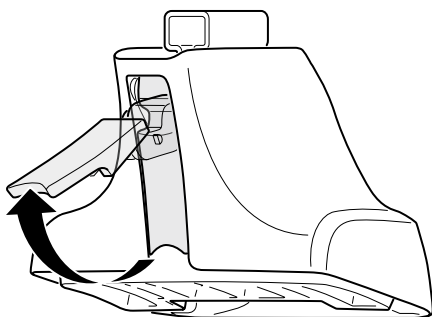
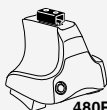


480

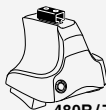




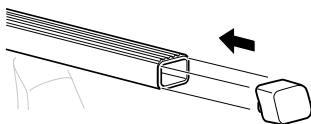
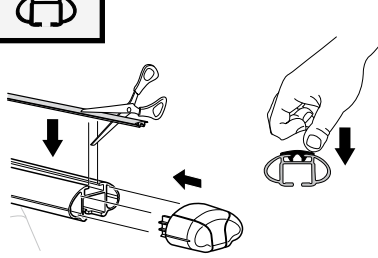
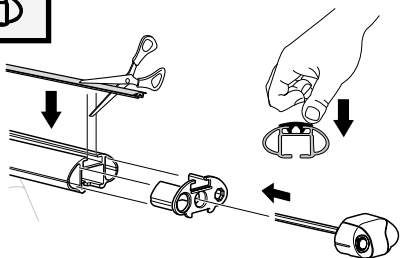
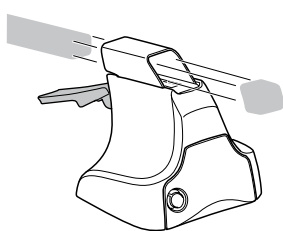
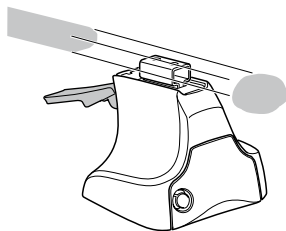
1

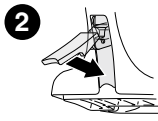
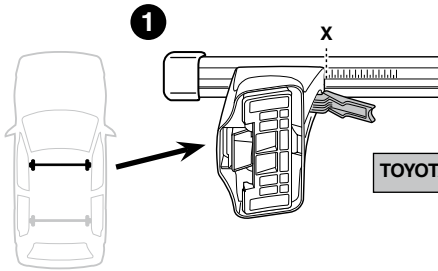
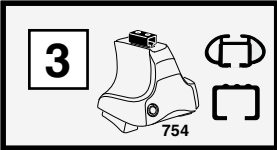


2

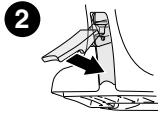
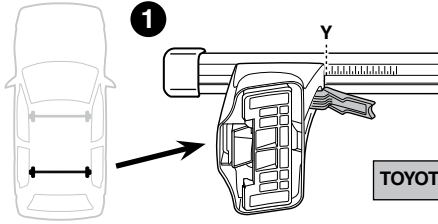


+

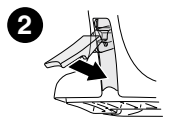
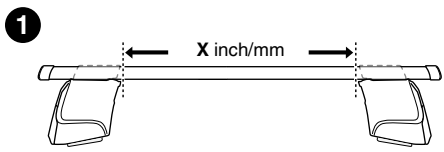
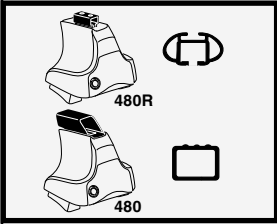




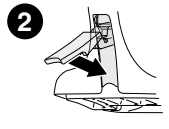
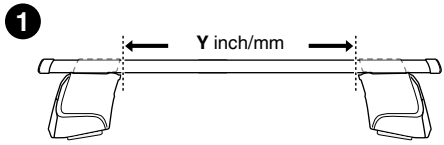
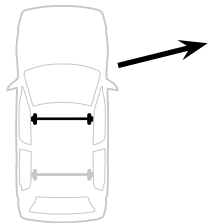
TOYOTA Ist (Mk.I.), 5-dr Hatchback, 02-07	X
	30,5



TOYOTA Ist (Mk.I.), 5-dr Hatchback, 02-07	Y
	28

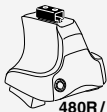


TOYOTA Ist (Mk.I.), 5-dr Hatchback, 02-07	X inch	X mm
	37 5/8"	956 mm



TOYOTA Ist (Mk.I.), 5-dr Hatchback, 02-07	Y inch	Y mm
	36 5/8"	931 mm

4



480R/754



480

TOYOTA Ist (Mk.I.), 5-dr Hatchback, 02-07

33



534



34



534



90



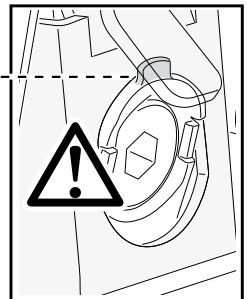
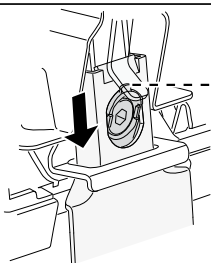
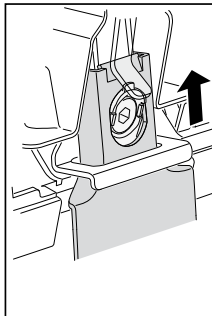
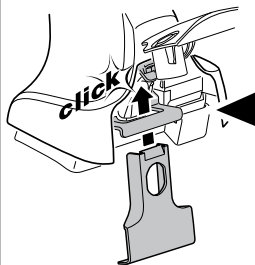
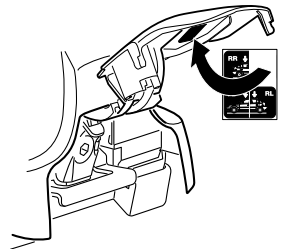
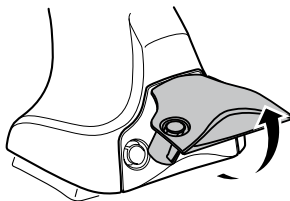
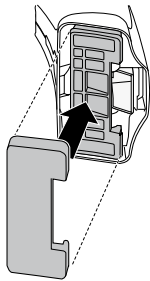
535



90



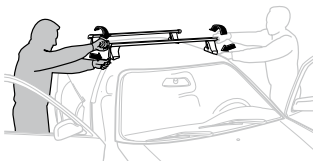
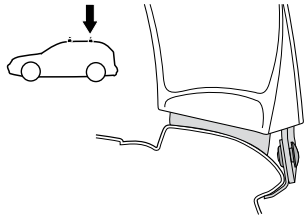
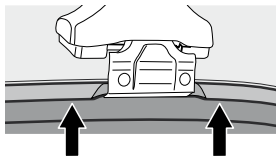
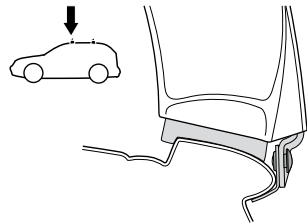
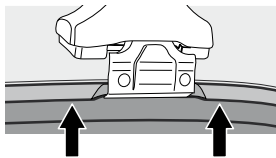
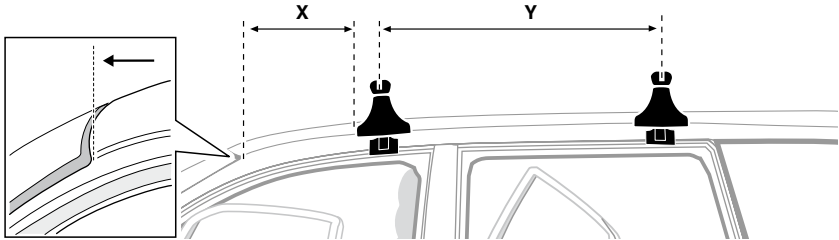
535



5



TOYOTA Ist (Mk.I.), 5-dr Hatchback, 02-07	X mm	Y mm	X inch	Y inch
	195 mm	715 mm	7 5/8"	28 1/8"



- GB/US** Tighten alternately  
**D** Die Schrauben abwechselnd anziehen  
**F** Serrer alternativement chaque côté  
**NL** Afwisselend aan de linker- en de rechterkant aandraaien  
**I** Alternare il serraggio delle viti  
**E** Apretar alternativamente  
**PT** Aperte alternadamente  
**S** Dra åt växelvis  
**FIN** Kierrä vuorotellen  
**EST** Pinguldage vaheldumisi  
**LAT** Pielvecliet pamišus  
**LIT** Užsukinėkite pakaitomis  
**PL** Śruby dokręcaj naprzemiennie  
**RU** Затягивайте попеременно

- CZ** Pokrětla bagazníka dokręcaj dokręcaj naprzemiennie.  
**SK** Dofahujzte striedavo  
**SLO** Privijajte izmenično.  
**HR** Naizmjenično zategnīte  
**HU** Egy mástól függetlenül szorítandó  
**GR** Σφιγγετε εναλλάξ  
**TR** Dönüşümlü sıkın

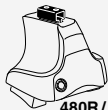
**中文** 交替拧紧

**한국어** 번갈아 가며 조이십시오.

**日本語** 交互に締め付けてください。

**ไทย** ขึ้นในแบบสลับ

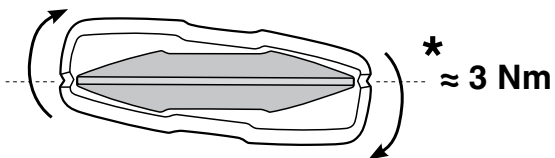
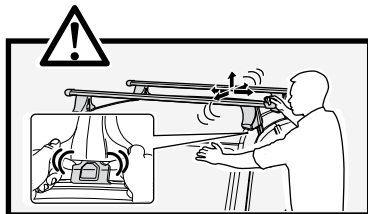
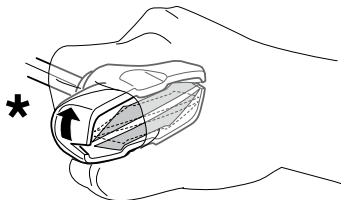
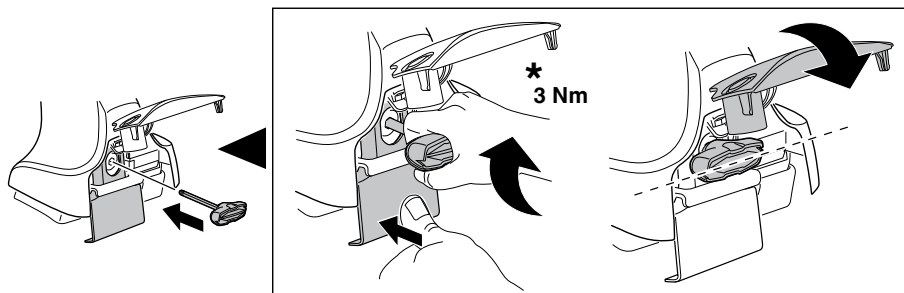
6



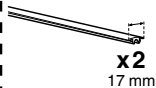
480R/754



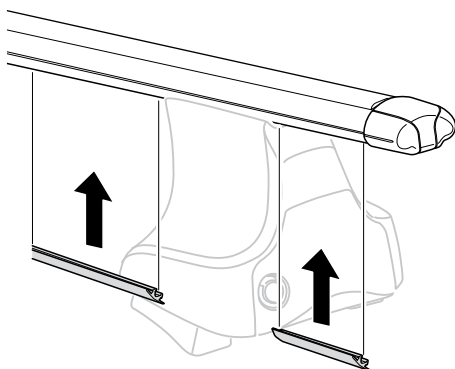
480

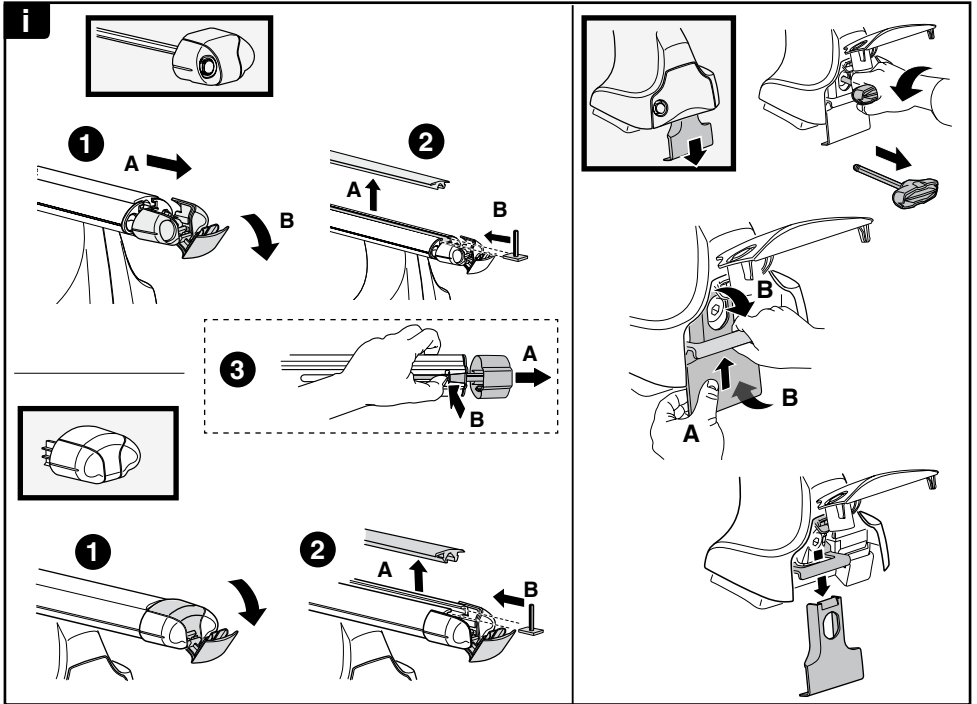
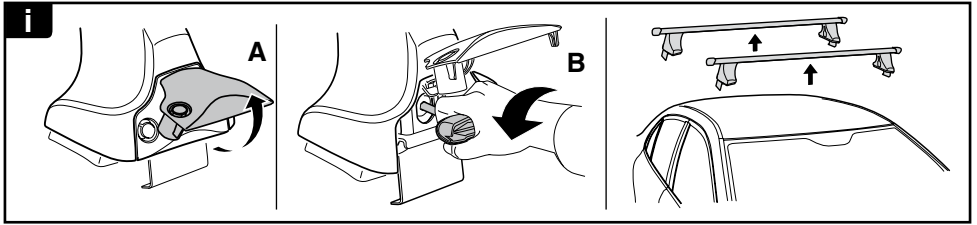


7



x2  
17 mm





**THULE**  
SWEDEN

**ONE  
KEY  
SYSTEM**

(x4)  
 (x6)  
 (x8)  
 NA (x10)  
 EUR (x12)  
 ASIA

**WW** ▶ Thule Sweden AB, Box 69, 330 33 Hillerstorp, SWEDEN  
**NA** ▶ Thule Inc., 42 Silvermine Road, Seymour, Connecticut 06483, USA

info@thule.com  
 customer.service@thule.com

www.thule.com