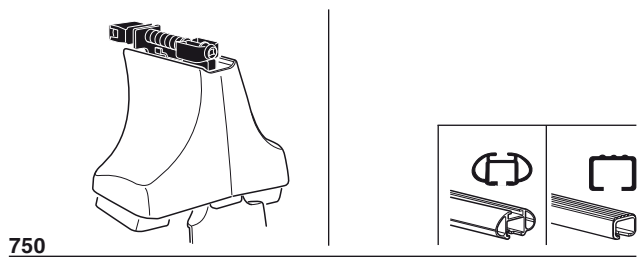
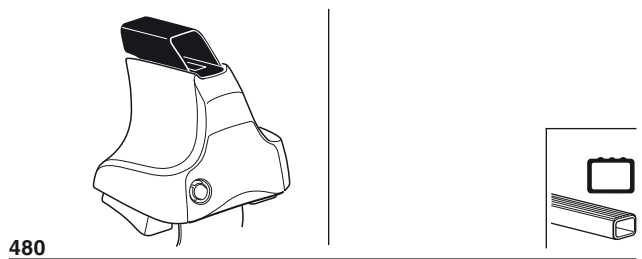
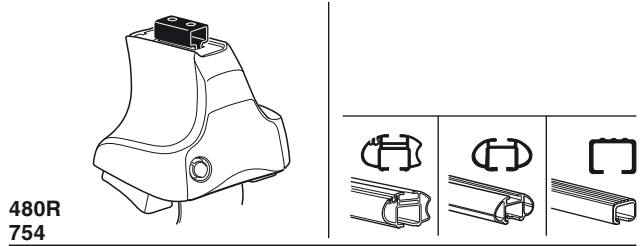
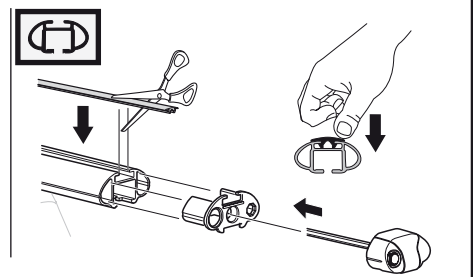
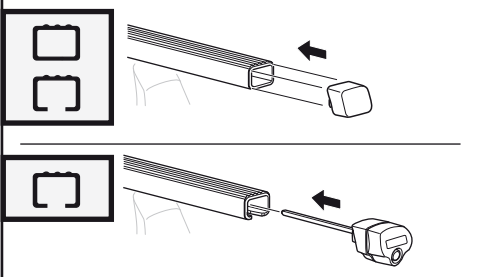
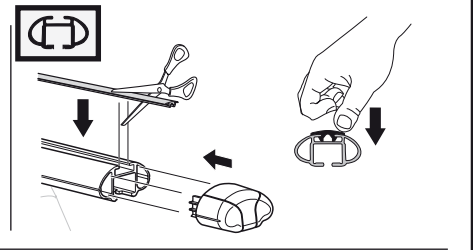
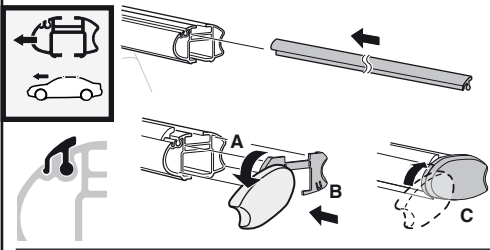
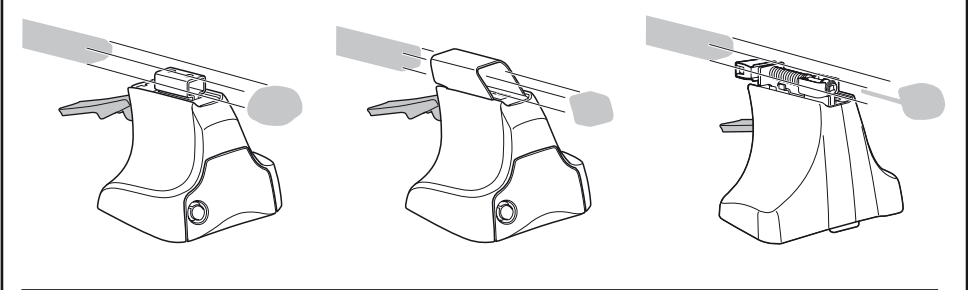
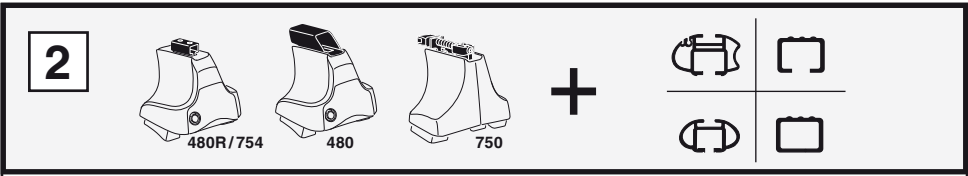
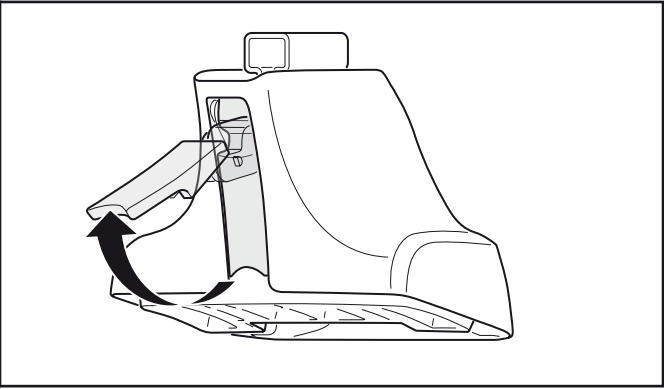
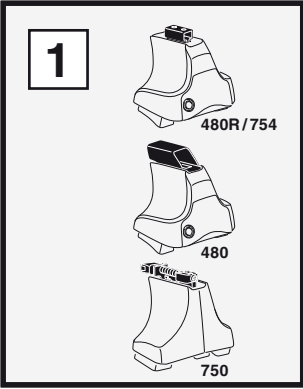


# Kit 1256

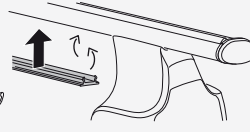
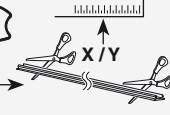
TOYOTA Noah, 5-dr MPV, 01–  
TOYOTA Voxy, 5-dr MPV, 01– (Asia)



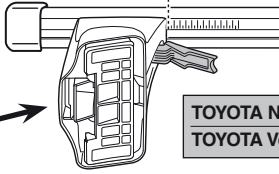
**Kit**



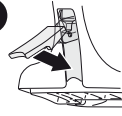
3



1

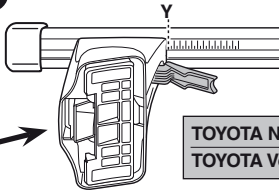


2

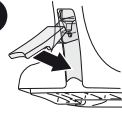


	X
TOYOTA Noah, 5-dr MPV, 01-	27,5
TOYOTA Voxy, 5-dr MPV, 01- (Asia)	27,5

1



2



	Y
TOYOTA Noah, 5-dr MPV, 01-	25,5
TOYOTA Voxy, 5-dr MPV, 01- (Asia)	25,5

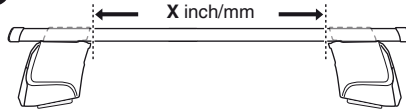


480R

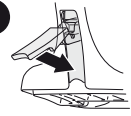


480

1

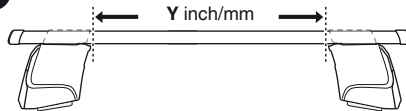


2

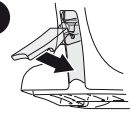


	X inch	X mm
TOYOTA Noah, 5-dr MPV, 01-	36 1/2"	926 mm
TOYOTA Voxy, 5-dr MPV, 01- (Asia)	36 1/2"	926 mm

1

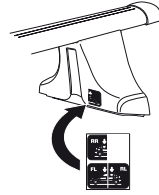
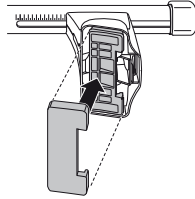
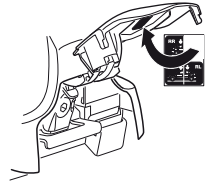
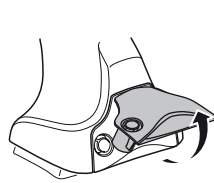
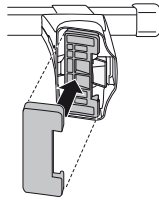
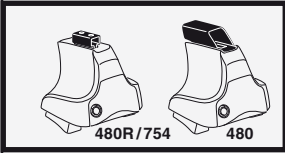


2

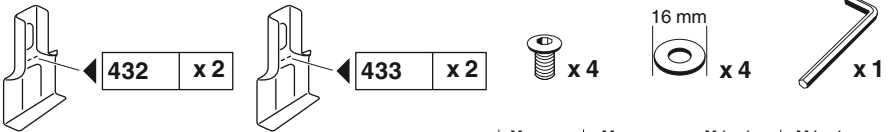
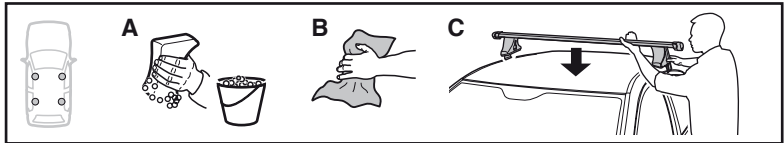


	Y inch	Y mm
TOYOTA Noah, 5-dr MPV, 01-	35 5/8"	906 mm
TOYOTA Voxy, 5-dr MPV, 01- (Asia)	35 5/8"	906 mm

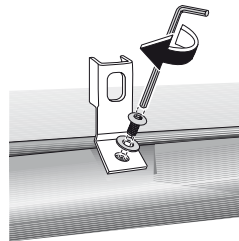
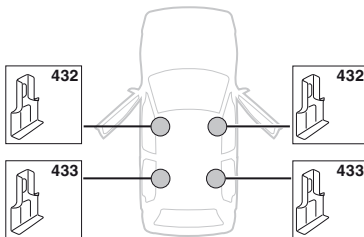
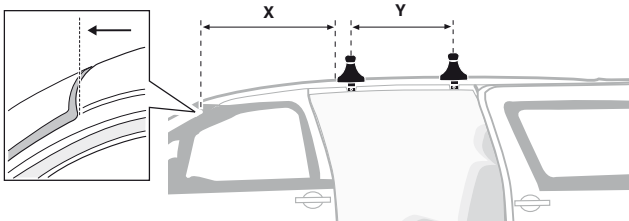
4



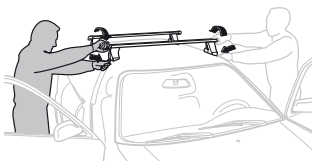
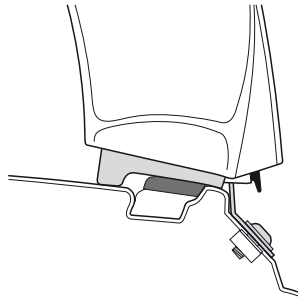
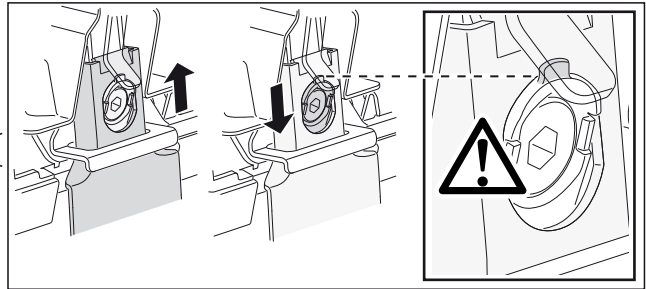
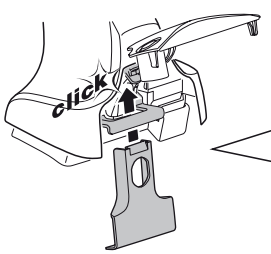
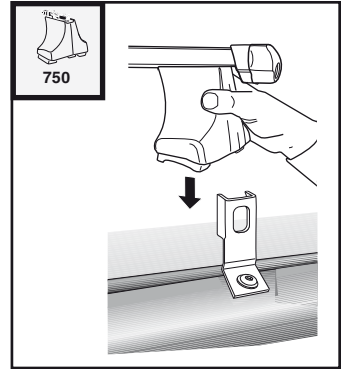
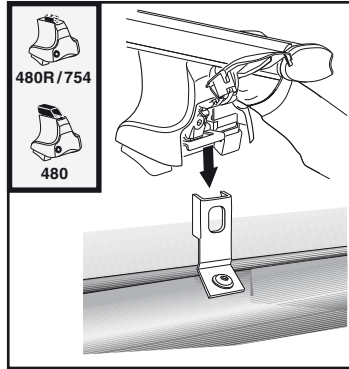
5



	X mm	Y mm	X inch	Y inch
TOYOTA Noah, 5-dr MPV, 01-	190 mm	650 mm	7 1/2"	25 5/8"
TOYOTA Voxy, 5-dr MPV, 01- (Asia)	190 mm	650 mm	7 1/2"	25 5/8"



6



- GB/US** Tighten alternately  
**D** Die Schrauben abwechselnd anziehen  
**F** Serrer alternativement chaque côté  
**NL** Afwisselend aan de linker- en de rechterkant aandraaien  
**I** Alternare il serraggio delle viti  
**E** Apretar alternativamente  
**PT** Aperte alternadamente  
**S** Dra åt växelvis  
**FIN** Kierrä vuorotellen  
**EST** Pinguldage vaheldumisi  
**LAT** Pievelciēt pamišus  
**LIT** Užsukinėkite pakaitomis  
**PL** Śruby dokręcaj naprzemiennie  
**RU** Затягивайте попеременно

- CZ** Pokrétla bagażnika dokręcaj naprzemiennie.  
**SK** Dofahujte striedavo  
**SLO** Privijajte izmenično.  
**HR** Naizmjenično zategnite  
**HU** Egymástól függetlenül szorítandó  
**GR** Σφιγγετε εναλλάξ  
**TR** Dönüşümlü sıkın

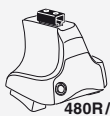
**中文** 交替拧紧

**한국어** 번갈아 가며 조이십시오.

**日本語** 交互に締め付けてください。

**ไทย** ชั้สลับแบบสลับ

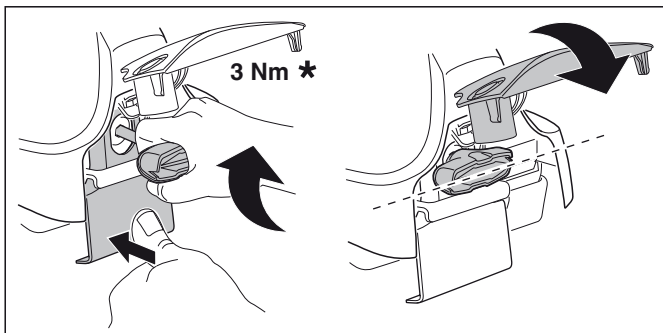
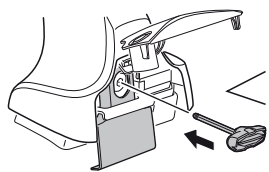
7



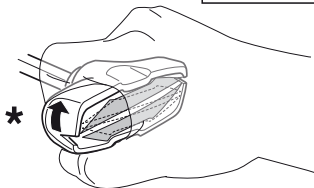
480R/754



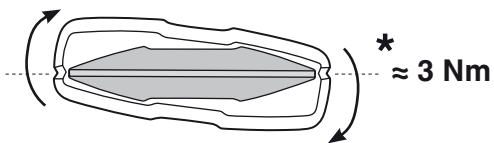
480



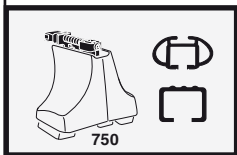
3 Nm \*



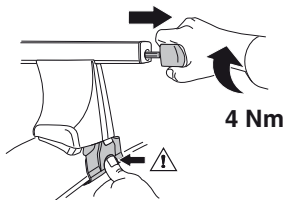
\*



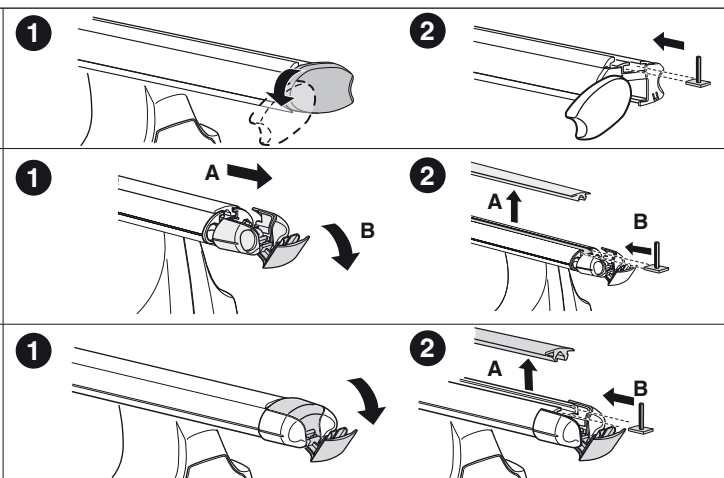
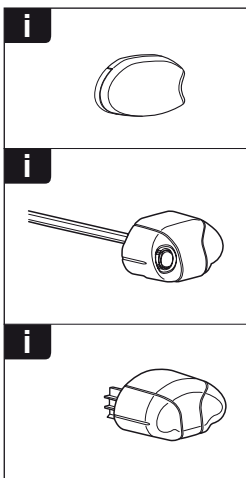
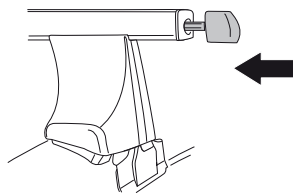
\* ≈ 3 Nm

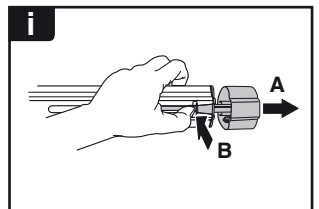
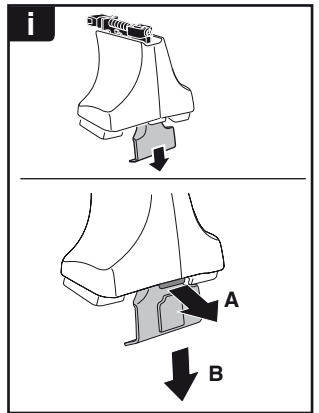
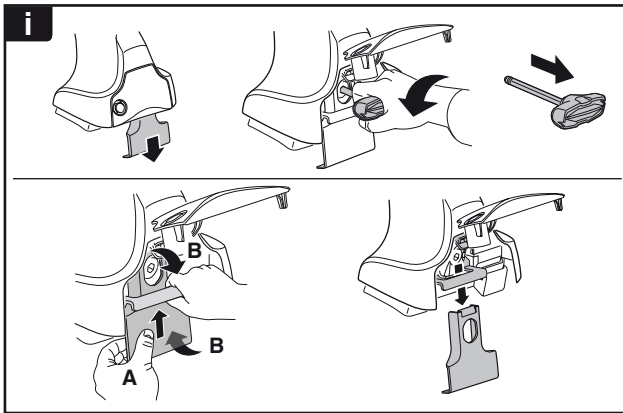
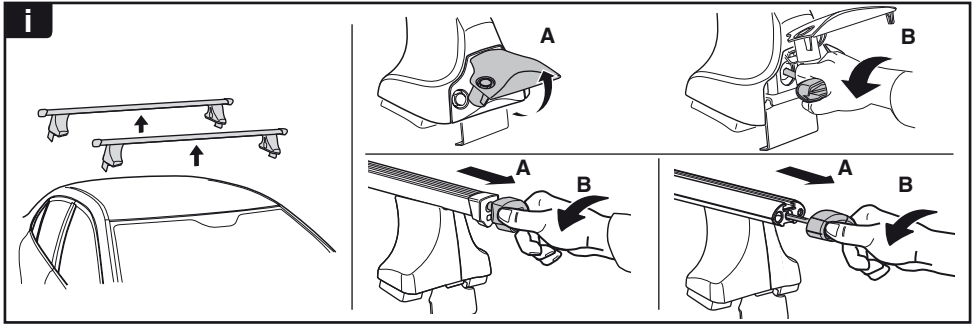


750



4 Nm

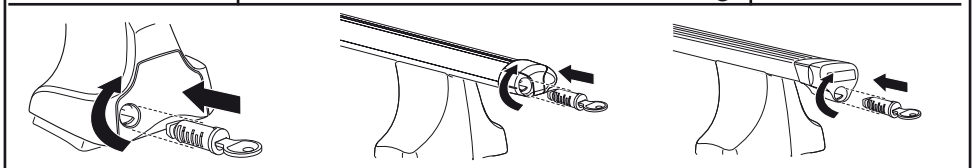




**THULE**  
SWEDEN  
**ONE  
KEY  
SYSTEM**



- 544** (x4)
- 596** (x6)
- 588** (x8)
- NA **510** (x10)
- EUR **452** (x12)
- ASIA



WW ▶ Thule Sweden AB, Box 69, 330 33 Hillerstorp, SWEDEN  
NA ▶ Thule Inc., 42 Silvermine Road, Seymour, Connecticut 06483, USA

info@thule.com  
customer.service@thule.com

www.thule.com