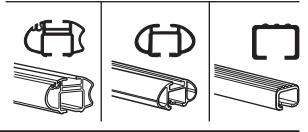
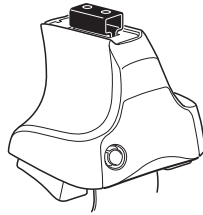


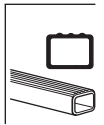
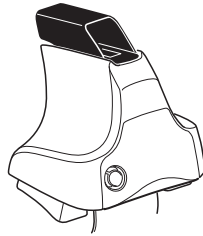
Kit 1387

VOLVO S60, 4-dr Sedan, 01-04, 05-

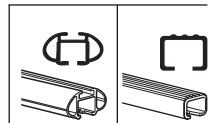
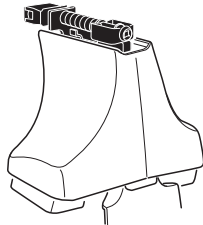
480R
754



480



750



xx kg
 xx lbs + 7 kg
 15,4 lbs = **Max. 60 kg**
Max. 132 lbs

80 km/h 50 Mph
 130 km/h 80 Mph
 40 km/h 25 Mph
km/h Mph

THULE + **Kit XXXX**

x1 x4 x4 x4

480R/754

x1 x4 x4 x4

480

x1 x4 x4

750

x2	x2	x2	x2	x2
x2		x2	x2	
x2		x2	x2	
x4		x4	x4	

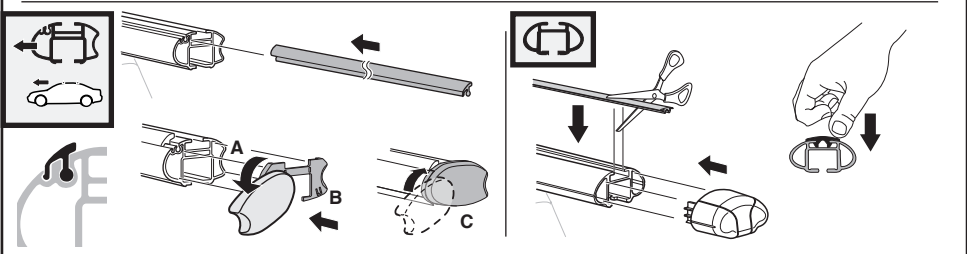
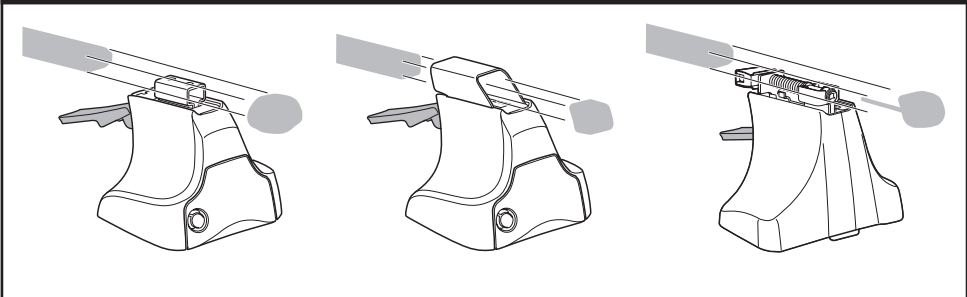
x2 **187** x2

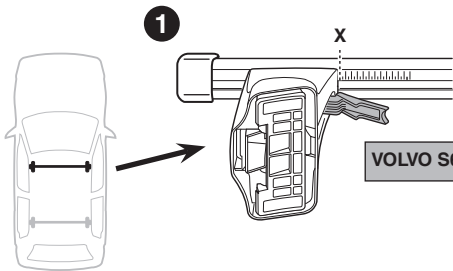
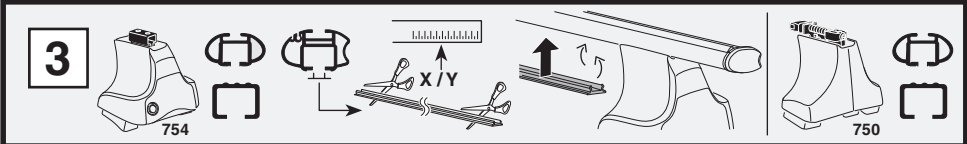
692 x1 **694** x1

189 x2 **693** x1 **695** x1

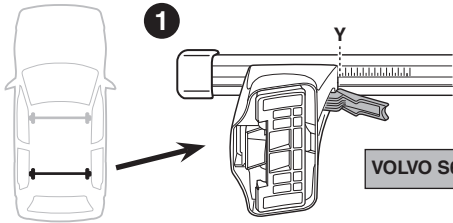
x1

Kit

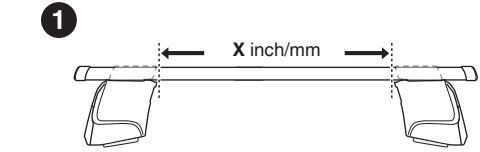
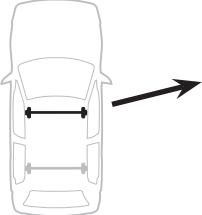
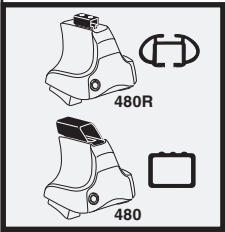




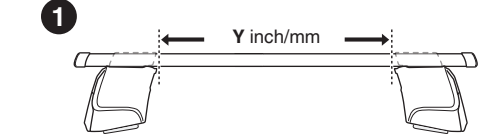
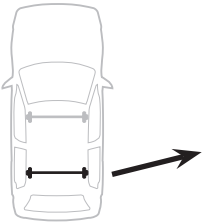
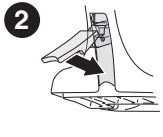
1	X
VOLVO S60, 4-dr Sedan, 01-04, 05-	
	40



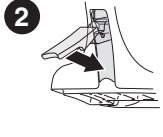
1	Y
VOLVO S60, 4-dr Sedan, 01-04, 05-	
	37



1	X inch/mm
VOLVO S60, 4-dr Sedan, 01-04, 05-	
X inch	X mm
41 3/8"	1051 mm

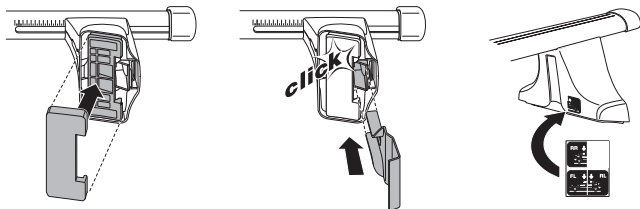
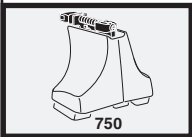
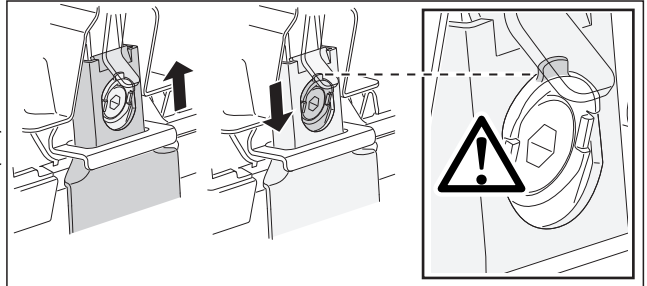
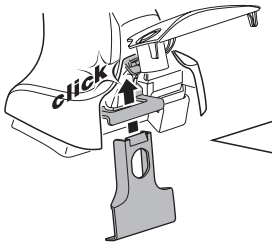
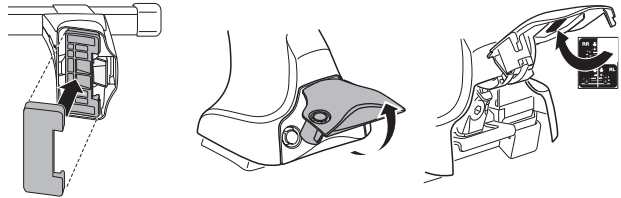
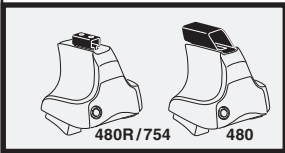
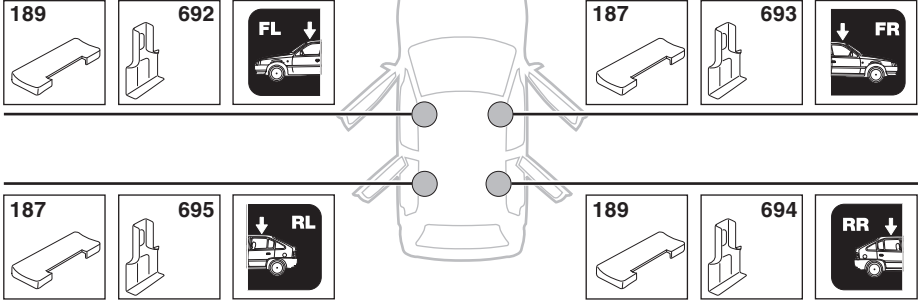


1	Y inch/mm
VOLVO S60, 4-dr Sedan, 01-04, 05-	
Y inch	Y mm
40 1/4"	1021 mm

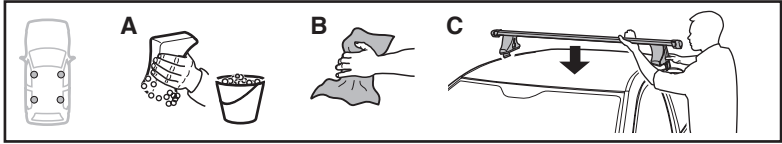


4

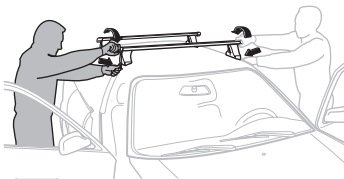
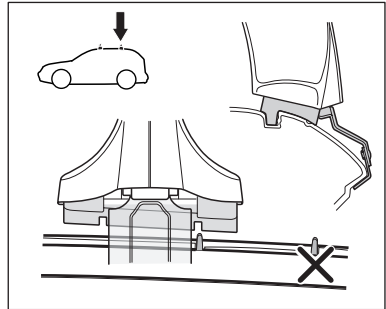
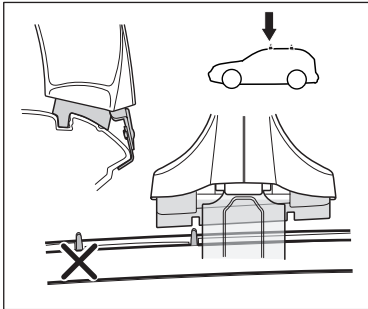
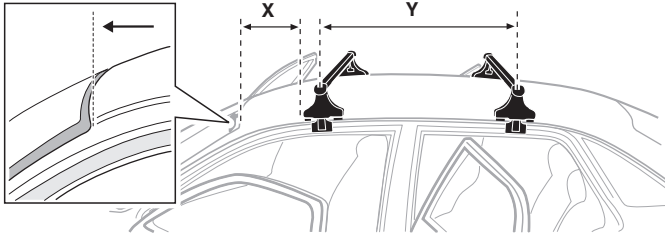
VOLVO S60, 4-dr Sedan, 01-04, 05-



5



	X mm	Y mm	X inch	Y inch
VOLVO S60, 4-dr Sedan, 01-04, 05-	245 mm	650 mm	9 5/8"	25 5/8"



GB/US Tighten alternately

D Die Schrauben abwechselnd anziehen

F Serrer alternativement chaque côté

NL Afwisselend aan de linker- en de rechterkant aandraaien

I Alternare il serraggio delle viti

E Serrare alternativamente

PT Aperte alternadamente

S Dra åt växelvis

FIN Kierrä vuorotellen

EST Pinguldage vaheldumisi

LAT Pievelciet pamišus

LIT Užsukinėkite pakaitomis

PL Śruby dokręcaj naprzemiennie

RU Затягивайте попеременно

CZ Pokręťta bagażníka dokręcaj dokręcaj naprzemiennie.

SK Dotahujte striedavo

SLO Privijajte izmenično.

HR Naizmjenično zategnite

HU Egymástól függetlenül szorítandó

GR Σφιγγετε εναλλάξ

TR Dönüşümlü sıkın

中文 交替拧紧

한국어 번갈아 가며 조이십시오.

日本語 交互に締め付けてください。

ไทย ชั้้นในแบบสลับ

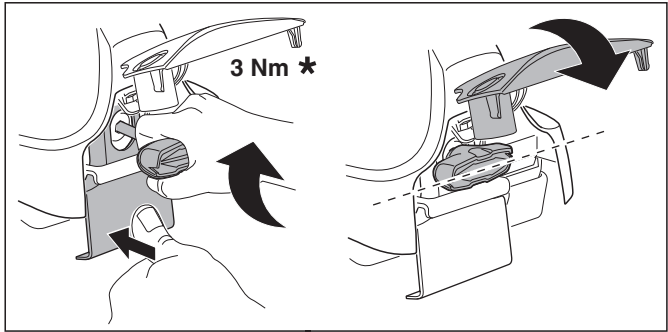
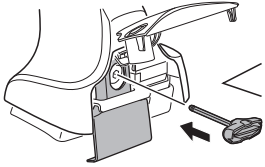
6



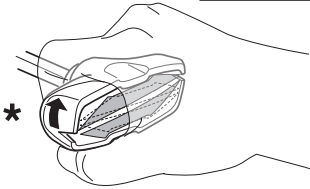
480R/754



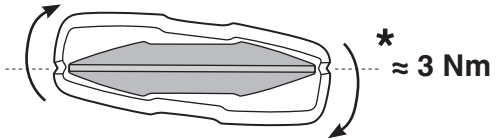
480



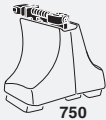
3 Nm *



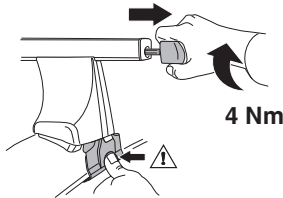
*



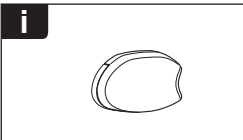
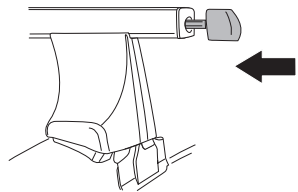
* ≈ 3 Nm



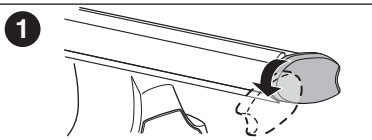
750



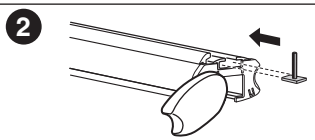
4 Nm



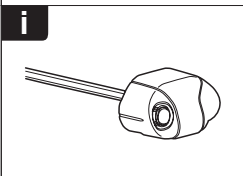
i



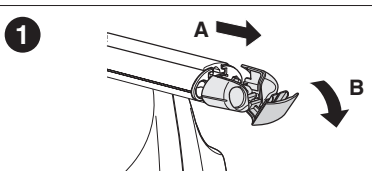
1



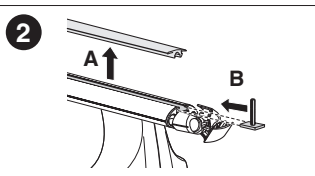
2



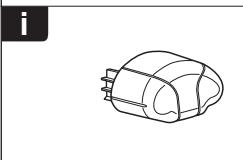
i



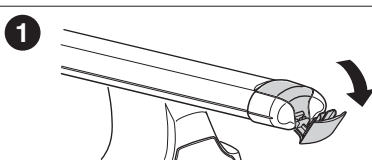
1



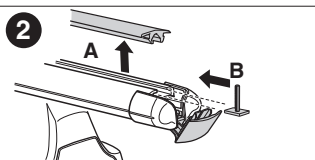
2



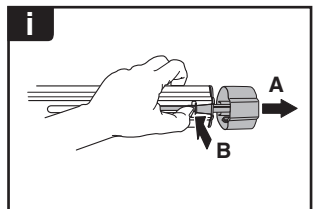
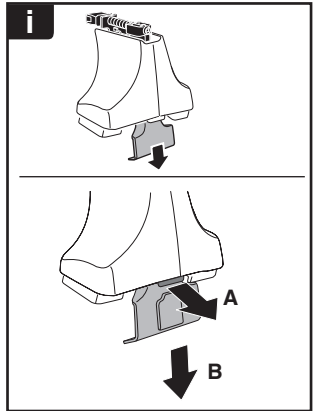
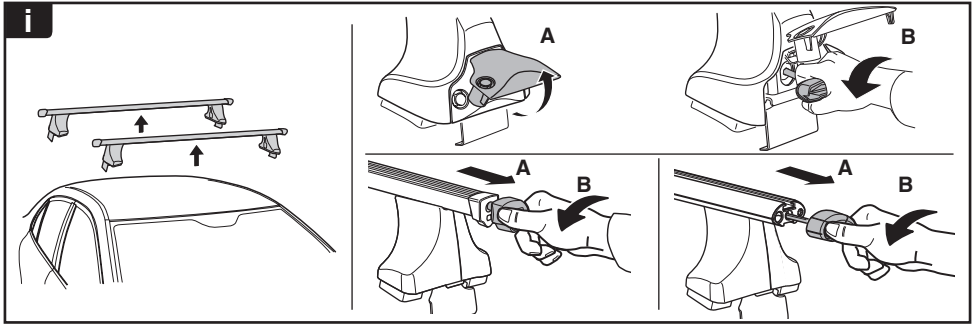
i



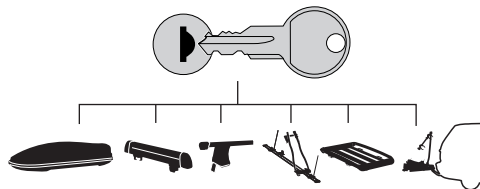
1



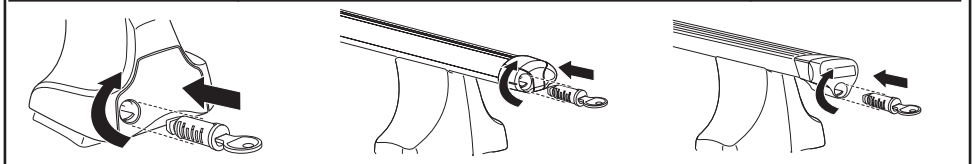
2



THULE
SWEDEN
**ONE
KEY
SYSTEM**



- 544 (x4)
- 596 (x6)
- 588 (x8)
- NA 510 (x10)
- EUR 452 (x12)
- ASIA



WW ▶ Thule Sweden AB, Box 69, 330 33 Hillerstorp, SWEDEN
NA ▶ Thule Inc., 42 Silvermine Road, Seymour, Connecticut 06483, USA

info@thule.com
customer.service@thule.com

www.thule.com