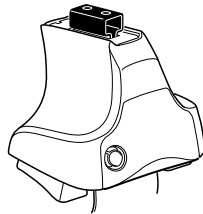


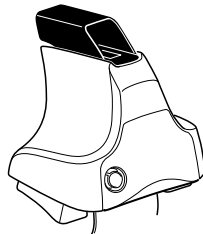
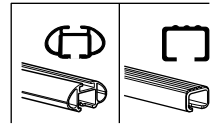
# Kit 1626

CITROËN C4, 5-dr Hatchback, 10-\*

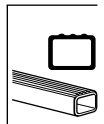
\*Without glass roof



**754** Rapid System  
**480R** Rapid Traverse (North America)

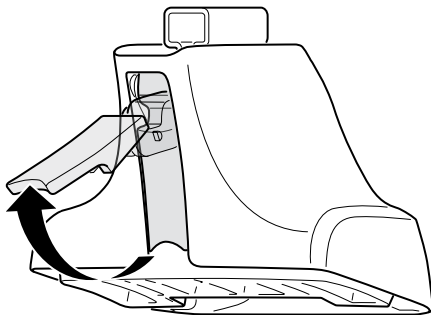


**480** Traverse (North America)





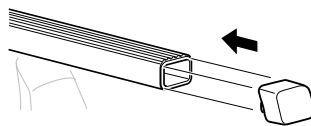
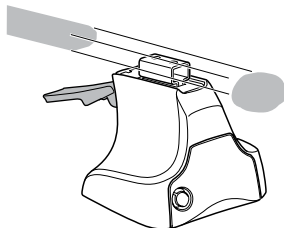
1



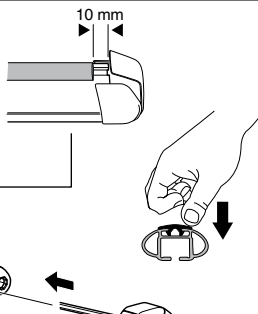
2



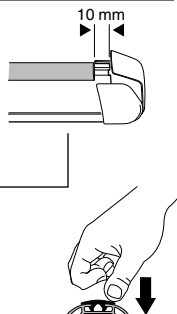
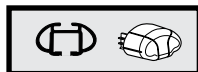
754 Rapid System  
480R Rapid Traverse  
(North America)



x4



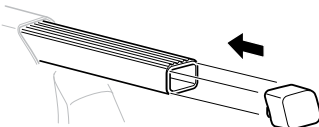
x4



x4



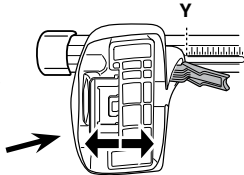
480 Traverse  
(North America)



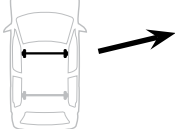
x4

**3****754** Rapid System

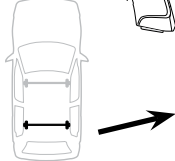
	<b>X</b>
<b>CITROËN C4, 5-dr Hatchback, 10-</b>	<b>37,5</b>



	<b>Y</b>
<b>CITROËN C4, 5-dr Hatchback, 10-</b>	<b>32,5</b>

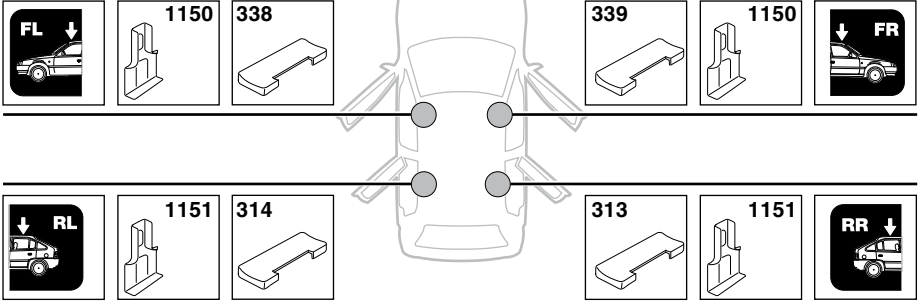
**3****480R** Rapid Traverse**480** Traverse**(North America)**

	<b>X inch</b>	<b>X mm</b>
<b>CITROËN C4, 5-dr Hatchback, 10-</b>	<b>40 3/8"</b>	<b>1026 mm</b>

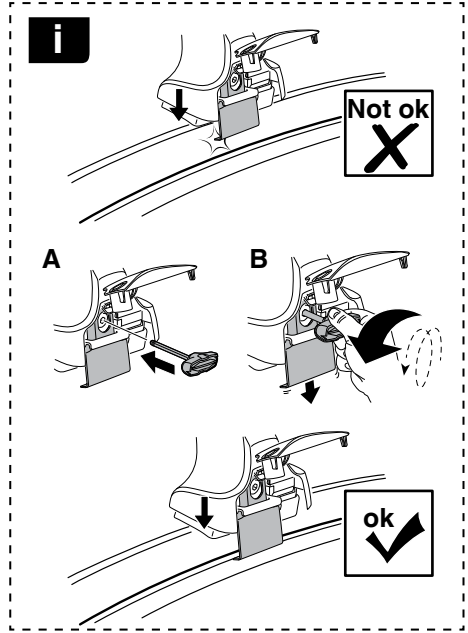


	<b>Y inch</b>	<b>Y mm</b>
<b>CITROËN C4, 5-dr Hatchback, 10-</b>	<b>38 3/8"</b>	<b>976 mm</b>

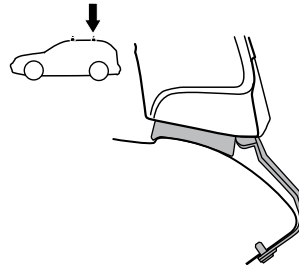
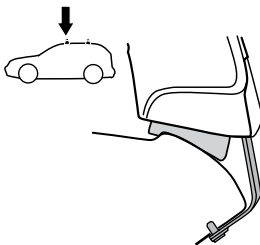
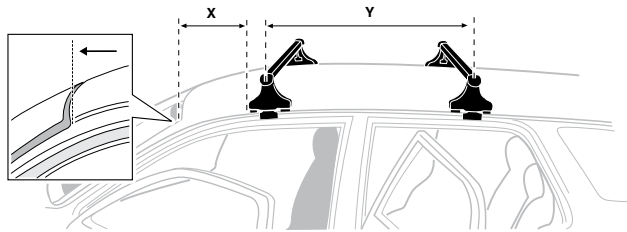
**4**

**5****CITROËN C4, 5-dr Hatchback, 10-**

6



	X mm	Y mm	X inch	Y inch
CITROËN C4, 5-dr Hatchback, 10-	210 mm	725 mm	8 1/4"	28 1/2"



7



GB/US Tighten alternately  
 D Die Schrauben abwechselnd anziehen  
 F Serrer alternativement chaque côté  
 NL Afwisselend aan de linker- en de rechterkant aandraaien  
 I Alternare il serraggio delle viti  
 E Apertar alternativamente  
 PT Aperte alternadamente  
 S Dra åt växelvis  
 FIN Kierrä vuorotellen  
 EST Pinguldage vaheldumisi  
 LAT Pieļieciet pamišus  
 LIT Užsukinėkite pakaitomis  
 PL Śruby dokręcaj naprzemiennie  
 RU Затягивайте попеременно

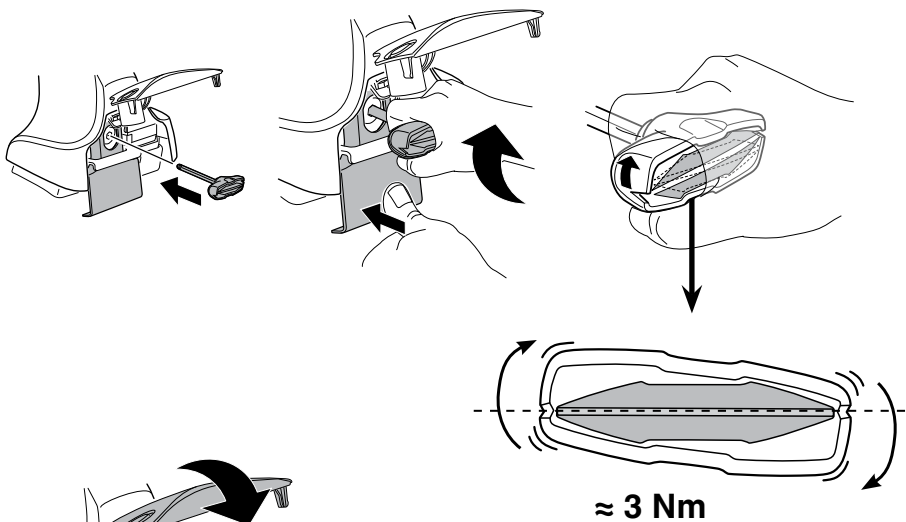
CZ Pokręťta bagażnika dokręcaj dokręcaj naprzemiennie.  
 SK Dofahajte striedavo  
 SLO Privijajte izmenično.  
 HR Naizmjerno zategnite  
 HU Egymástól függetlenül szorítandó  
 GR Σφιγίγες εναλλάξ  
 TR Dönüşümlü sıkın

中文 交替拧紧

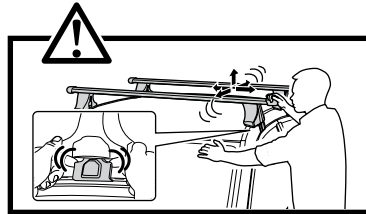
한국어 번갈아 가며 조이십시오.

日本語 交互に締め付けてください。

ไทย ชันในแบบสลับ



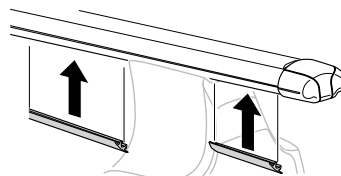
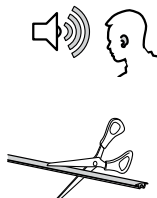
≈ 3 Nm

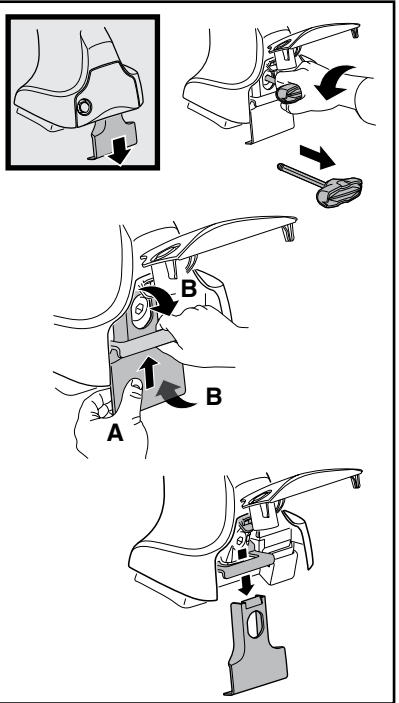
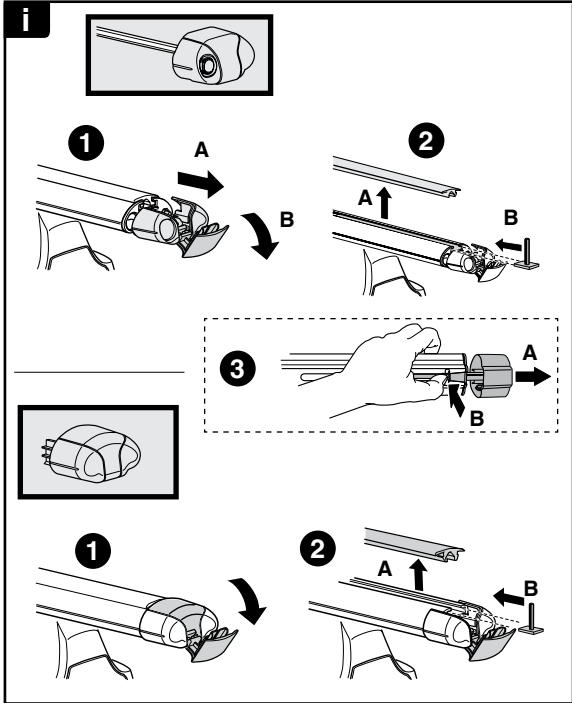


8

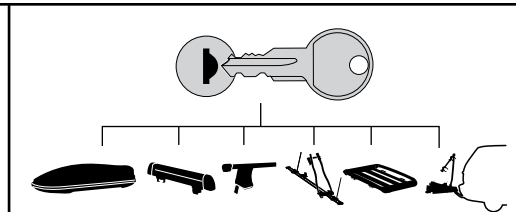


x1  
17 mm





**THULE**  
SWEDEN  
**ONE  
KEY  
SYSTEM**



		(x4)
		(x6)
		(x8)
NA		(x10)
EUR		(x12)
ASIA		

