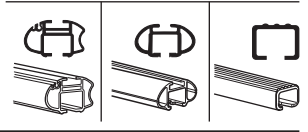
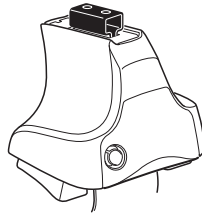


Kit 1212

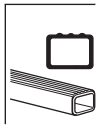
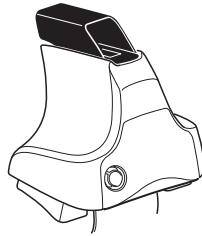
AUDI A4, 4-dr Sedan, 01-04, 05-07

SEAT Exeo, 4-dr Sedan, 09–

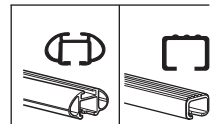
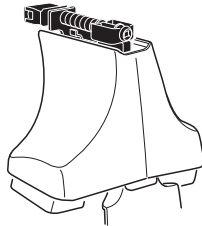
480R
754



480



750



THULE[®]
SWEDEN

Max. 75kg
Max. 165 lbs

x1

x4

x4

x4

480R/754

x1

x4

x4

x4

480

x1

x4

x4

750

x2	x2	x2	x2	x2
x2	x2	x2	x2	x2
x2	x2	x4	x4	x4
x4	x4	x4	x4	x4

389

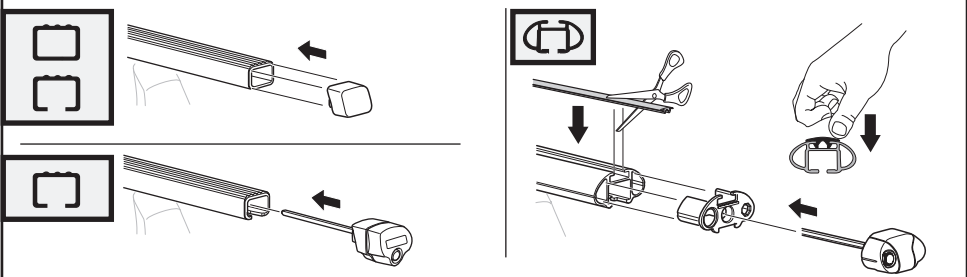
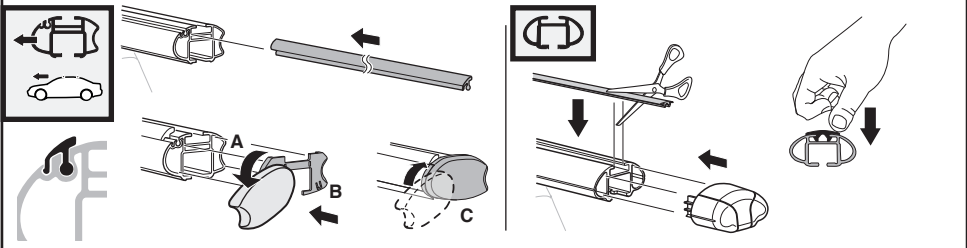
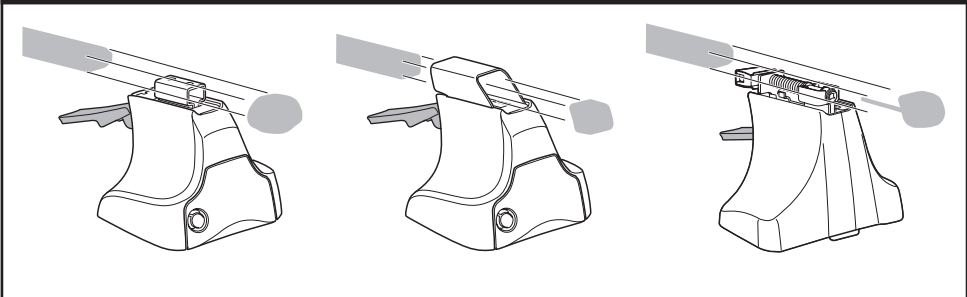
x4

07

x4

x1

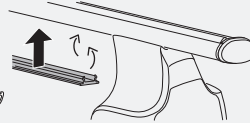
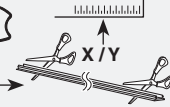
Kit



3

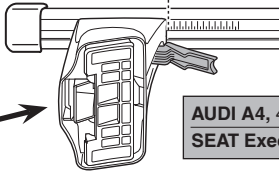
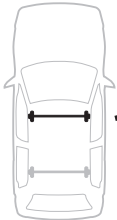


754

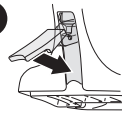


750

1



2



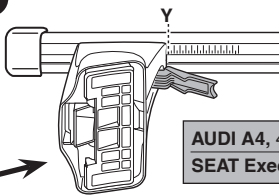
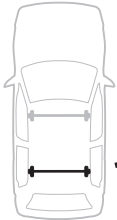
AUDI A4, 4-dr Sedan, 01-04, 05-07
SEAT Exeo, 4-dr Sedan, 09-

X

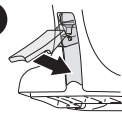
34,5

34,5

1



2



AUDI A4, 4-dr Sedan, 01-04, 05-07
SEAT Exeo, 4-dr Sedan, 09-

Y

31

31

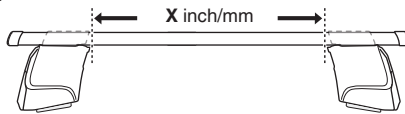


480R

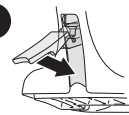


480

1



2



AUDI A4, 4-dr Sedan, 01-04, 05-07
SEAT Exeo, 4-dr Sedan, 09-

X inch

X mm

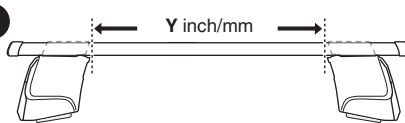
39 1/4"

996 mm

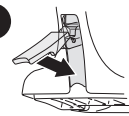
39 1/4"

996 mm

1



2



AUDI A4, 4-dr Sedan, 01-04, 05-07
SEAT Exeo, 4-dr Sedan, 09-

Y inch

Y mm

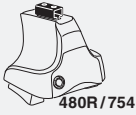
37 7/8"

961 mm

37 7/8"

961 mm

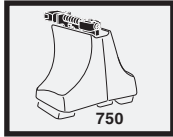
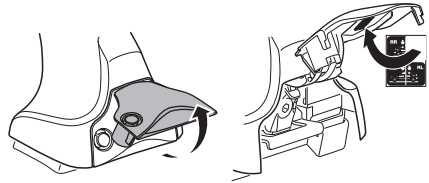
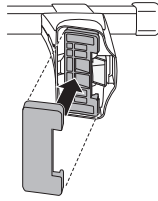
4



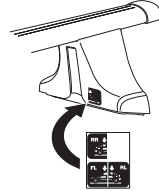
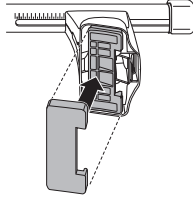
480R/754



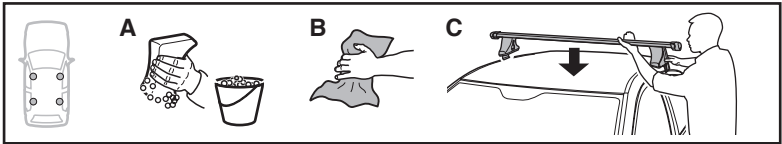
480



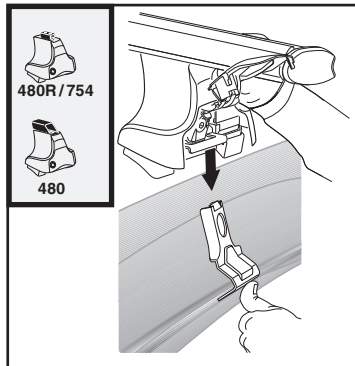
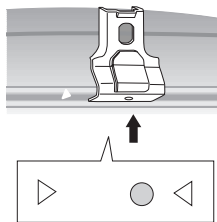
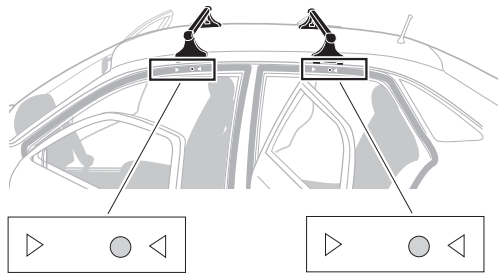
750



5

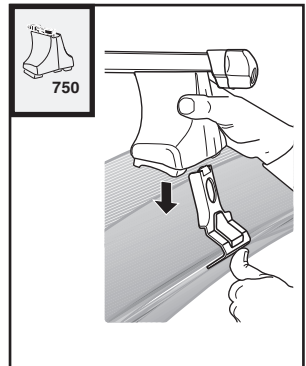


389 x 4



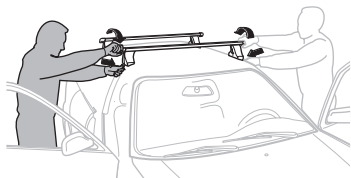
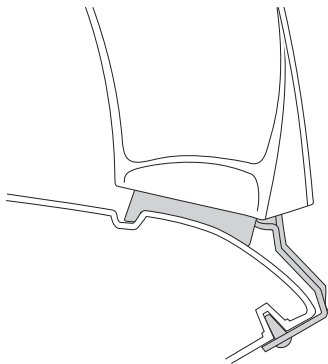
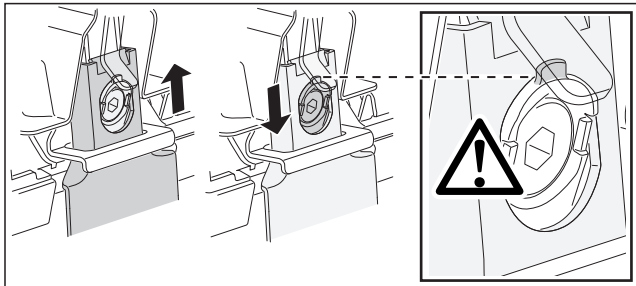
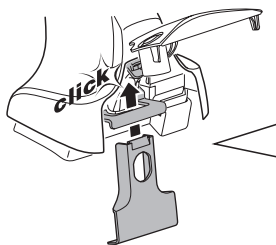
480R/754

480



750

6



GB/US Tighten alternately

D Die Schrauben abwechselnd anziehen

F Serrer alternativement chaque côté

NL Afwisselend aan de linker- en de rechterkant aandraaien

I Alternare il serraggio delle viti

E Serrare alternativamente

PT Aperte alternadamente

S Dra åt växelvis

FIN Kierrä vuorotellen

EST Pinguldage vaheldumisi

LAT Pielveiciet pamišus

LIT Užsukinėkite pakaitomis

PL Śruby dokręcaj naprzemiennie

RU Затягивайте попеременно

CZ Pokręťta bagażníka dokręcaj dokręcaj naprzemiennie.

SK Doťahujte striedavo

SLO Privijajte izmenično.

HR Naizmjenično zategnite

HU Egymástól függetlenül szorítandó

GR Σφίγγετε εναλλάξ

TR Dönüşümlü sıkın

中文 交替拧紧

한국어 번갈아 가며 조이십시오.

日本語 交互に締め付けてください。

ไทย ชั้้นโน้บแบบสลับ

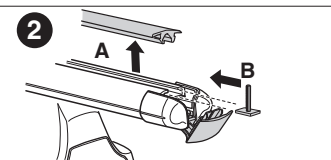
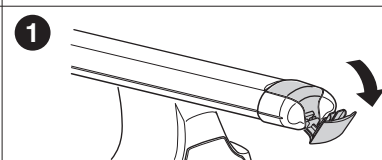
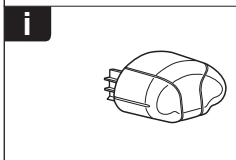
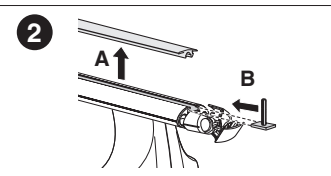
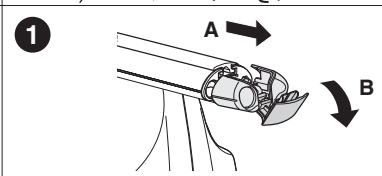
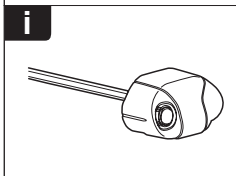
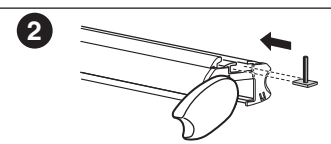
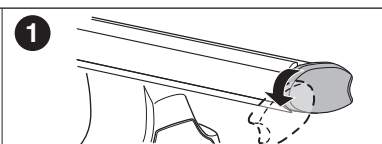
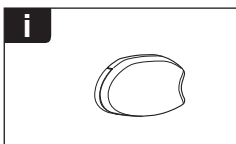
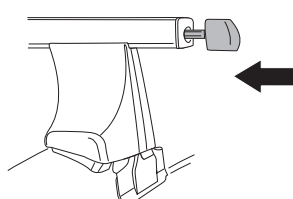
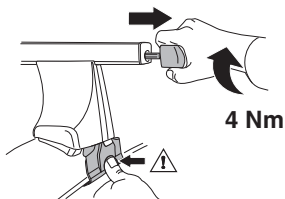
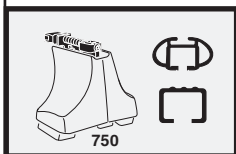
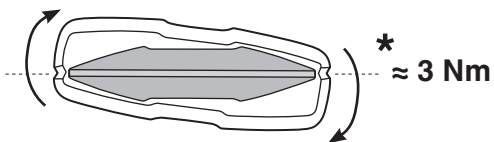
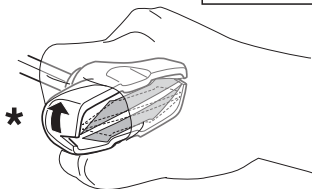
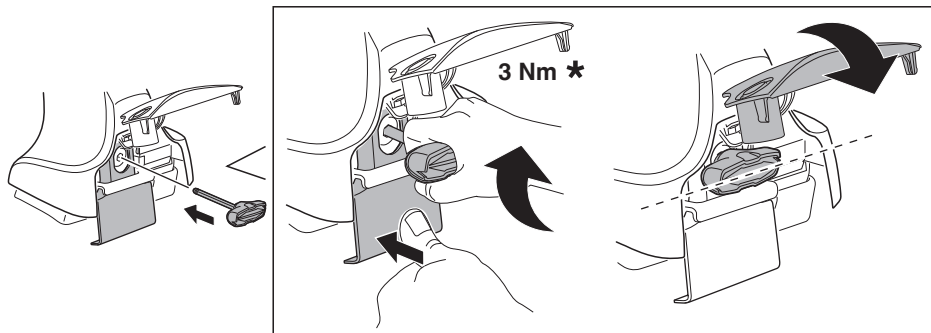
7

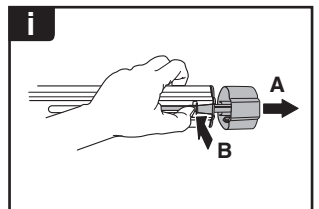
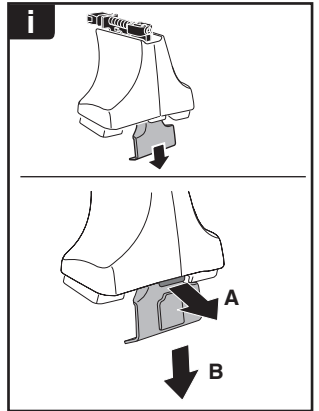
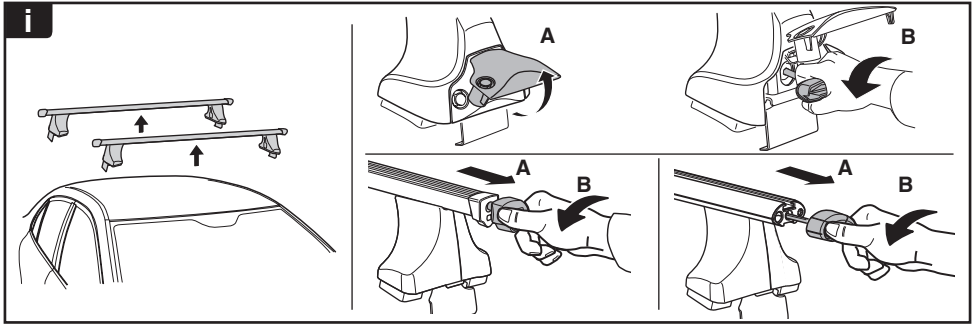


480R/754






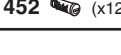

480

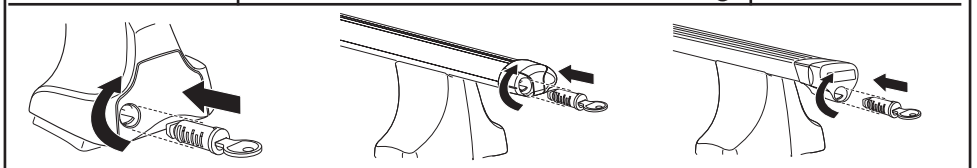




THULE
SWEDEN
**ONE
KEY
SYSTEM**



-  **544** (x4)
 -  **596** (x6)
 -  **588** (x8)
 -  **510** (x10)
 -  **452** (x12)
- NA
EUR
ASIA



WW ▶ Thule Sweden AB, Box 69, 330 33 Hillerstorp, SWEDEN
NA ▶ Thule Inc., 42 Silvermine Road, Seymour, Connecticut 06483, USA

info@thule.com
customer.service@thule.com

 www.thule.com