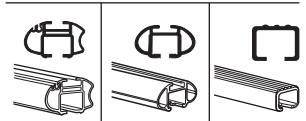
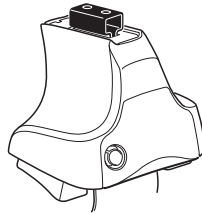


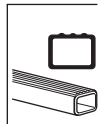
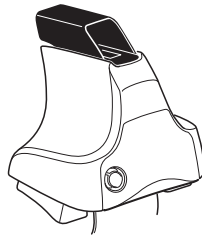
# Kit 1274

LAND ROVER Range Rover, 5-dr SUV, 02-

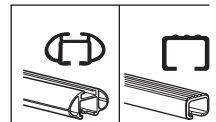
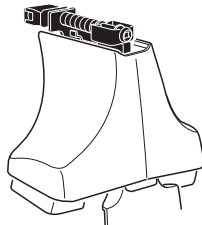
480R  
754



480



750



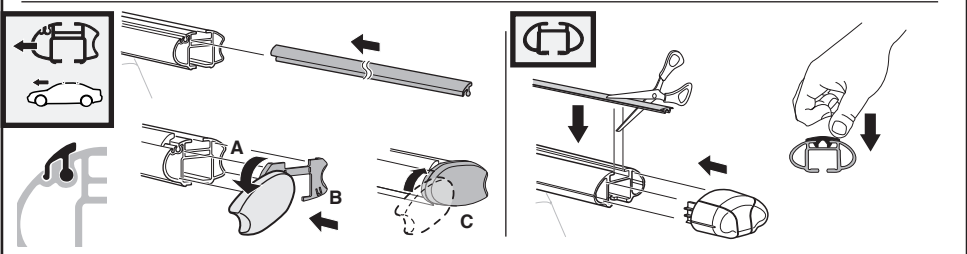
x2 x2 x2 x4	x2	x2 x2 x4 x4	x2 x2	x2

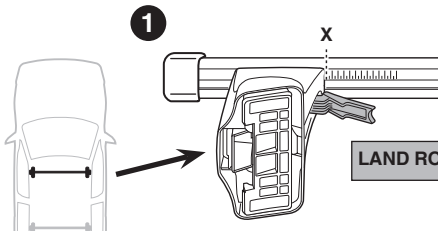
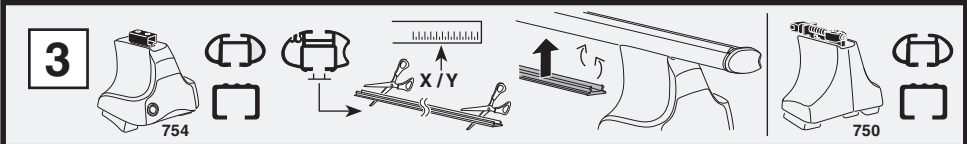
271 x 4

19 x 4

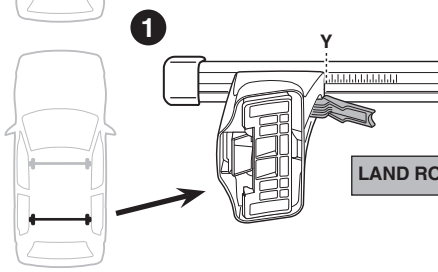
x 1

**Kit**

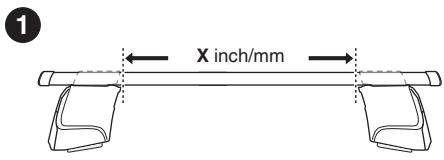
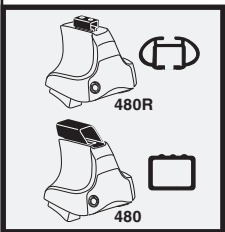
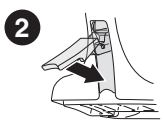




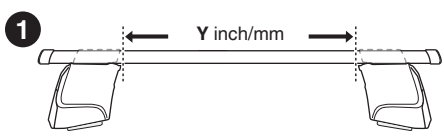
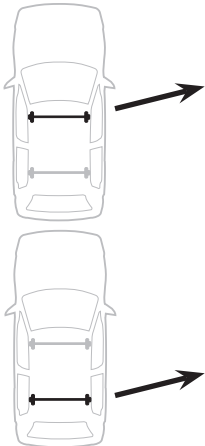
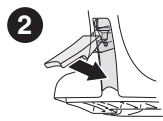
	X
LAND ROVER Range Rover, 5-dr SUV, 02-	56



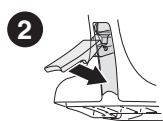
	Y
LAND ROVER Range Rover, 5-dr SUV, 02-	55.5



	X inch	X mm
LAND ROVER Range Rover, 5-dr SUV, 02-	47 5/8"	1211 mm

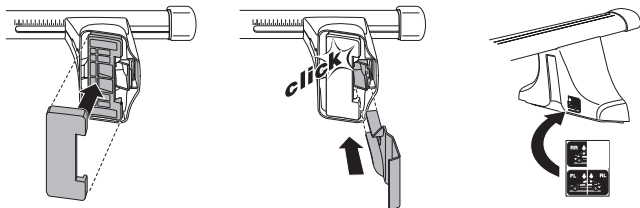
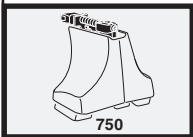
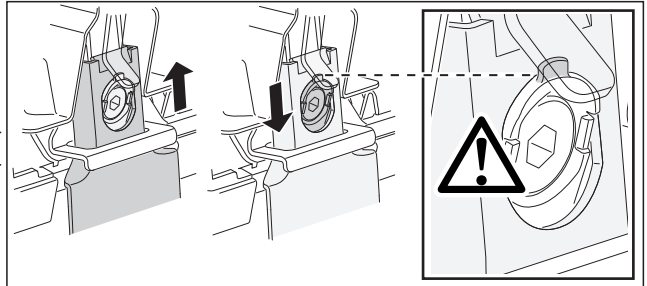
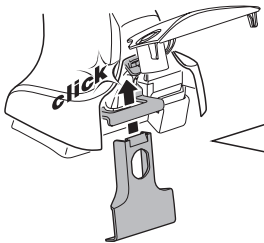
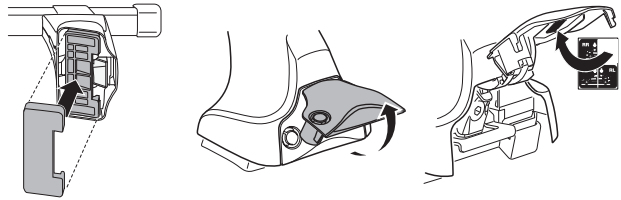
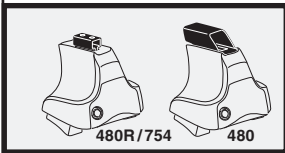
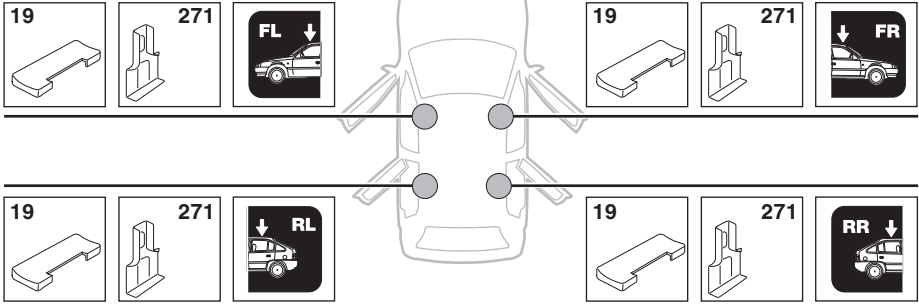


	Y inch	Y mm
LAND ROVER Range Rover, 5-dr SUV, 02-	47 1/2"	1206 mm

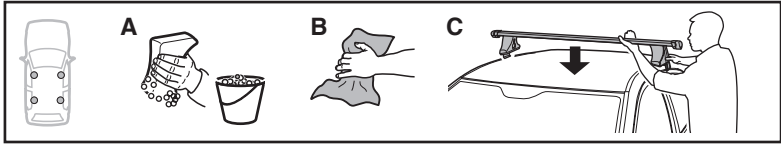


4

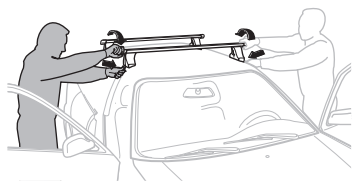
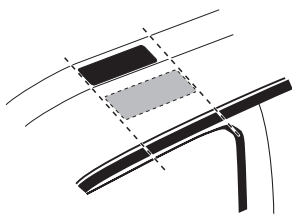
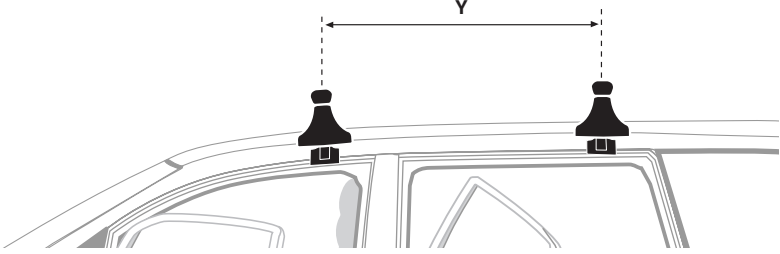
LAND ROVER Range Rover, 5-dr SUV, 02-



5



LAND ROVER Range Rover, 5-dr SUV, 02-	Y mm	Y inch
	720 mm	28 3/8"



**GB/US** Tighten alternately

**D** Die Schrauben abwechselnd anziehen

**F** Serrer alternativement chaque côté

**NL** Afwisselend aan de linker- en de rechterkant aandraaien

**I** Alternare il serraggio delle viti

**E** Serrare alternativamente

**PT** Aperte alternadamente

**S** Dra åt växelvis

- FIN** Kierrä vuorotellen
- EST** Pinguldage vaheldumisi
- LAT** Pieveļciet pamišus
- LIT** Užsukinėkite pakaitomis
- PL** Śruby dokręcaj naprzemiennie
- RU** Затягивайте попеременно
- CZ** Pokręťta bagažníka dokręcaj dokręcaj naprzemiennie.
- SK** Doťahujte striedavo
- SLO** Privijajte izmenično.
- HR** Naizmjenično zategnite
- HU** Egymástól függetlenül szorítandó
- GR** Σφιγγετε εναλλάξ
- TR** Dönüşümlü sıkın
- 中文** 交替拧紧
- 한국어** 번갈아 가며 조이십시오.
- 日本語** 交互に締め付けてください。
- ไทย** ชันโนแบบสลับ

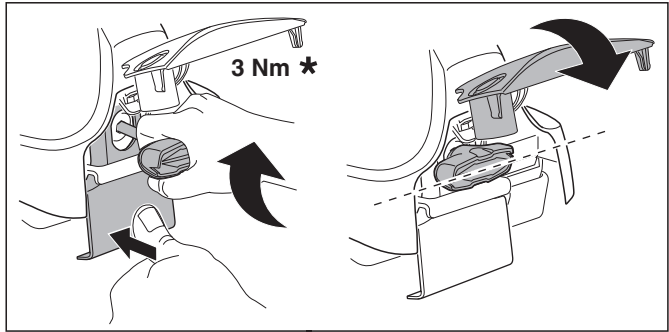
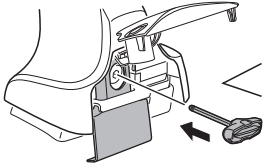
6



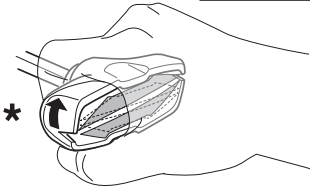
480R/754



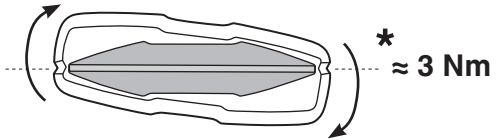
480



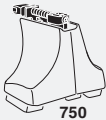
3 Nm \*



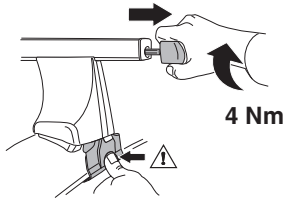
\*



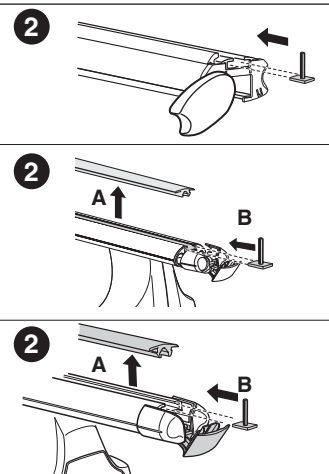
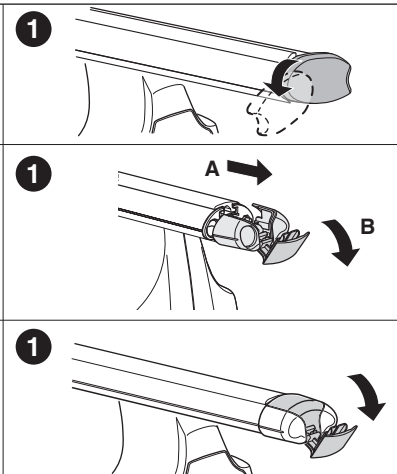
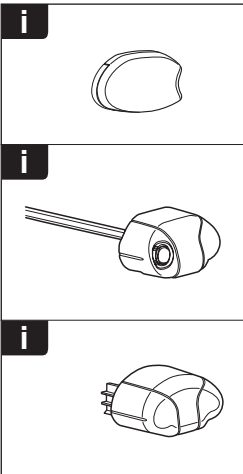
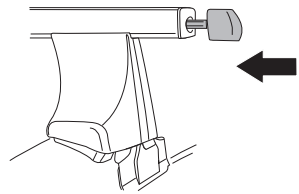
\* ≈ 3 Nm

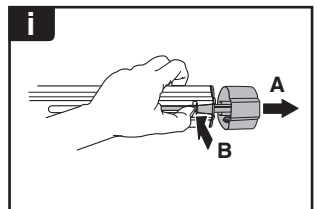
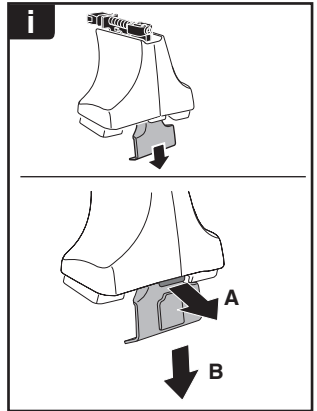
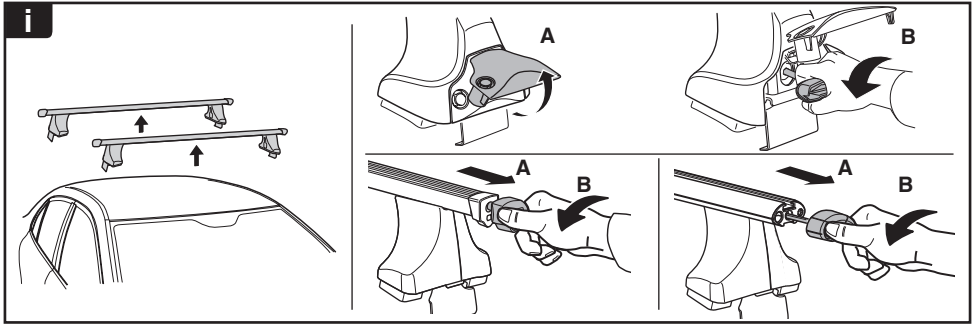


750

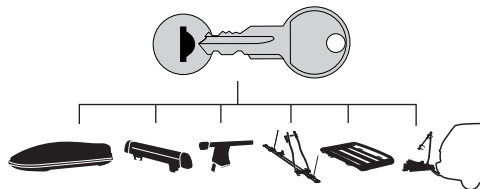


4 Nm

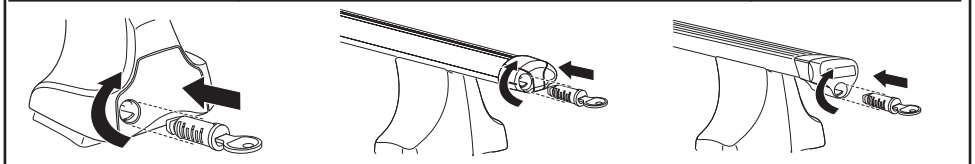




**THULE**  
SWEDEN  
**ONE  
KEY  
SYSTEM**



- 544 (x4)
- 596 (x6)
- 588 (x8)
- NA 510 (x10)
- EUR 452 (x12)
- ASIA



WW ▶ Thule Sweden AB, Box 69, 330 33 Hillerstorp, SWEDEN  
NA ▶ Thule Inc., 42 Silvermine Road, Seymour, Connecticut 06483, USA

info@thule.com  
customer.service@thule.com

www.thule.com