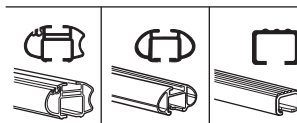
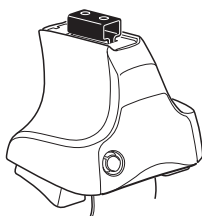


# Kit 1366

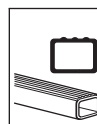
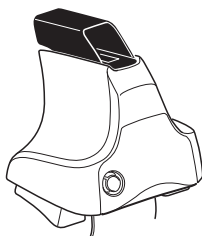
MINI Cooper, 3-dr Hatchback, 02-05

MINI Cooper, 3-dr Hatchback, 06–

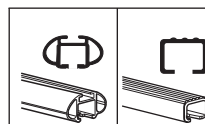
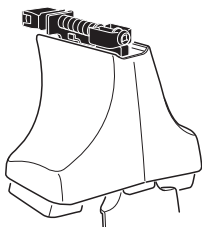
480R  
754



480



750



**THULE**<sup>®</sup>  
SWEDEN

ISO 11154-E

xx kg  
 xx lbs + 7 kg / 15,4 lbs = **Max. 50 kg**  
 3 kg / 6,6 lbs = **Max. 110 lbs**

80 km/h 50 Mph  
 130 km/h 80 Mph  
 40 km/h 25 Mph  
**km/h Mph**

**THULE** + **Kit XXXX**

**instructions**

x1 x4 x4 x4

**480R/754**

x1 x4 x4 x4

**480**

x1 x4 x4

**750**

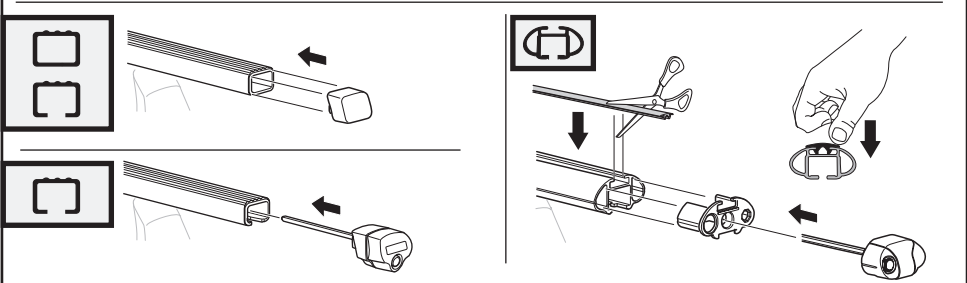
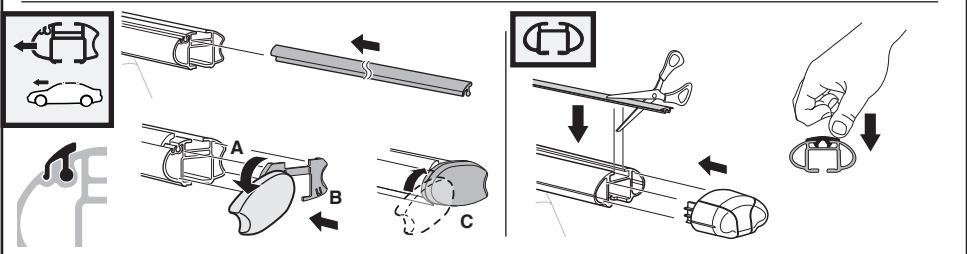
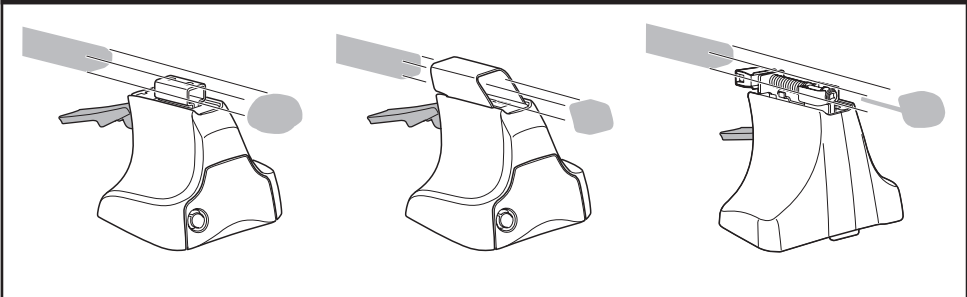
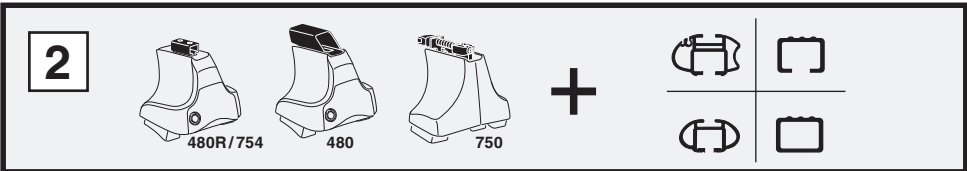
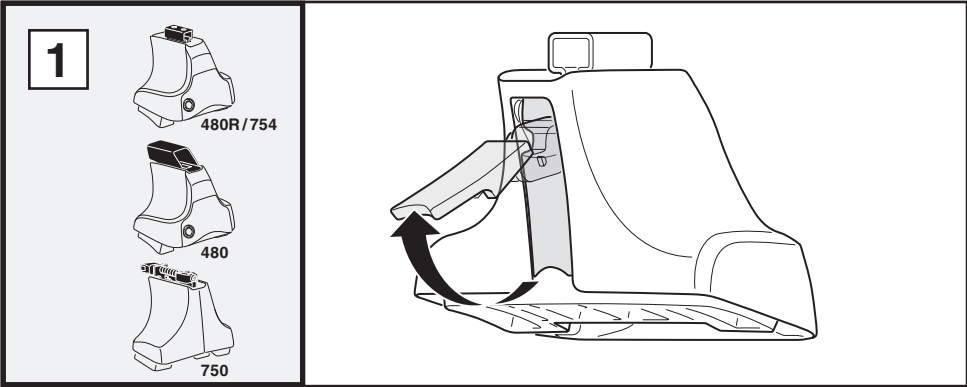
x2	x2	x2	x2	x2
x2		x2	x2	
x2		x2	x2	
x4		x4		
		x4		

**659** x 4

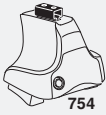
**182** x 4

x 1

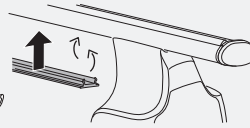
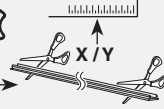
**Kit**



3



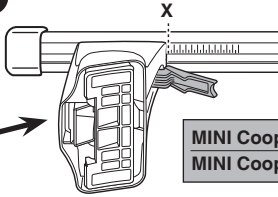
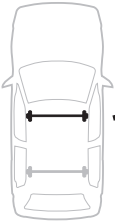
754



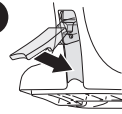
750



1

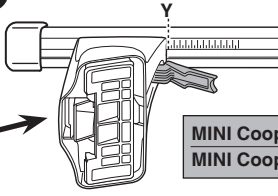


2

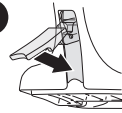


	X
MINI Cooper, 3-dr Hatchback, 02-05	31
MINI Cooper, 3-dr Hatchback, 06-	28

1



2



	Y
MINI Cooper, 3-dr Hatchback, 02-05	32
MINI Cooper, 3-dr Hatchback, 06-	32

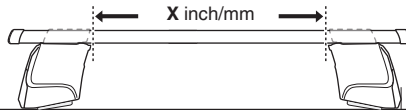
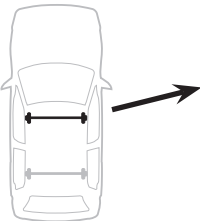


480R

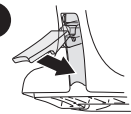


480

1

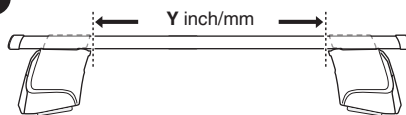
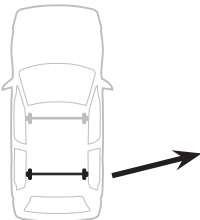


2

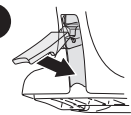


	X inch	X mm
MINI Cooper, 3-dr Hatchback, 02-05	37 <sup>7</sup> / <sub>8</sub> "	961 mm
MINI Cooper, 3-dr Hatchback, 06-	36 <sup>5</sup> / <sub>8</sub> "	931 mm

1

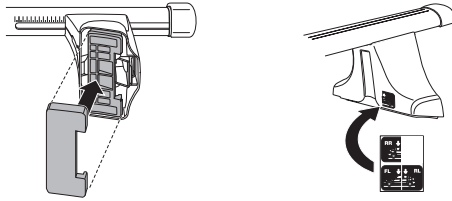
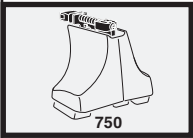
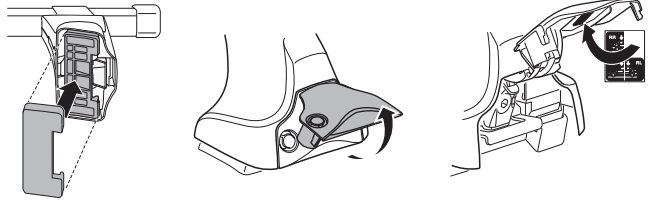
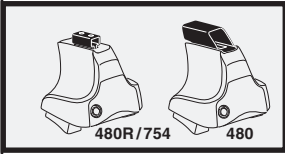


2

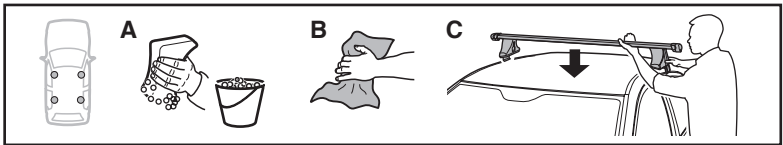


	Y inch	Y mm
MINI Cooper, 3-dr Hatchback, 02-05	38 <sup>1</sup> / <sub>4</sub> "	971 mm
MINI Cooper, 3-dr Hatchback, 06-	38 <sup>1</sup> / <sub>4</sub> "	971 mm

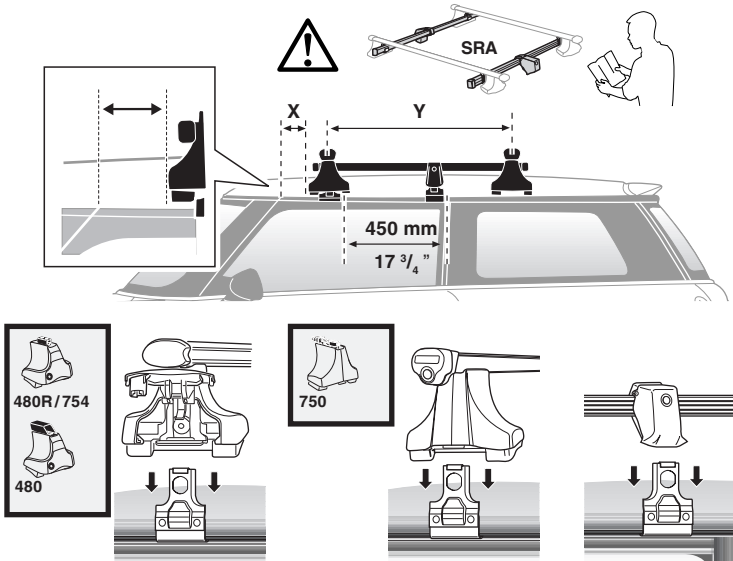
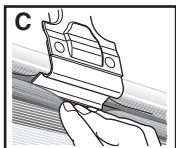
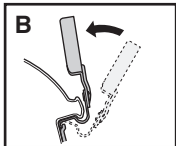
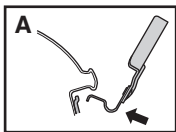
4



5



	X mm	Y mm	X inch	Y inch
MINI Cooper, 3-dr Hatchback, 02-05	110 mm	700 mm	4 3/8"	27 1/2"
MINI Cooper, 3-dr Hatchback, 06-	110 mm	700 mm	4 3/8"	27 1/2"



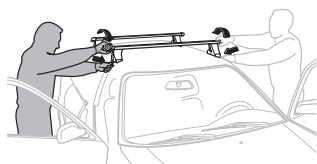
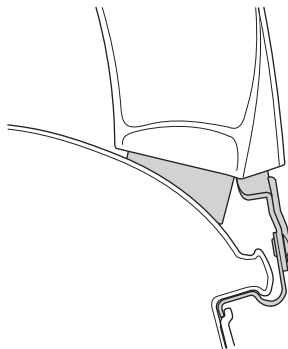
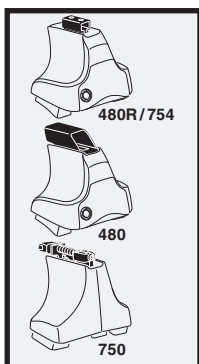
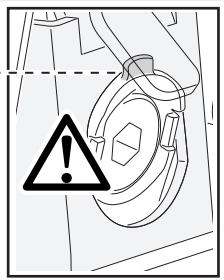
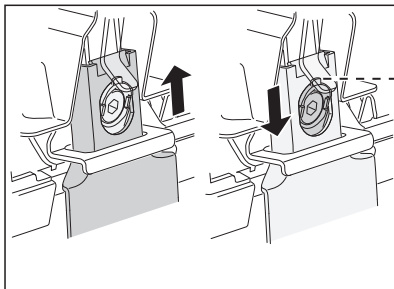
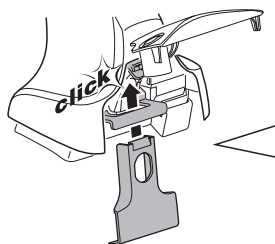
6



480R/754



480



GB/US

Tighten alternately

D

Die Schrauben abwechselnd anziehen

F

Serrer alternativement chaque côté

NL

Afwisselend aan de linker- en de rechterkant aandraaien

I

Alternare il serraggio delle viti

E

Apretar alternativamente

PT

Aperte alternadamente

S

Dra åt växelvis

FIN

Kierrä vuorotellen

EST

Pinguldage vaheldumisi

LAT

Pievelciēt pamīšus

LIT

Užsukinėkite pakaitomis

PL

Śruby dokręcaj naprzemiennie

RU

Затягивайте попеременно

CZ

Pokręťta багаžníka dokręcaj dokręcaj naprzemiennie.

SK

Dotahujte striedavo

SLO

Privijajte izmenično.

HR

Naizmjenično zategnite

HU

Egymástól függetlenül szorítandó

GR

Σφιγγετε εναλλάξ

TR

Dönüşümlü sıkın

中文

交替拧紧

한국어

변갈아 가며 조이십시오.

日本語

交互に締め付けてください。

ไทย

ขันในแบบสลับ

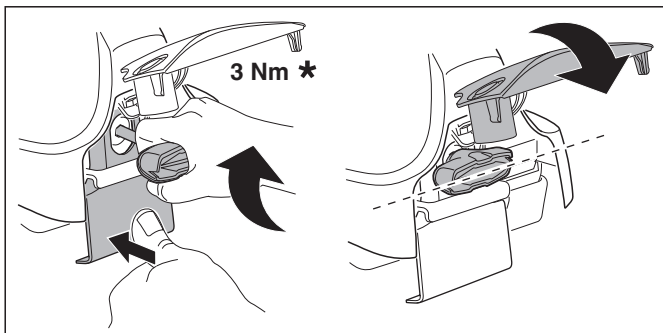
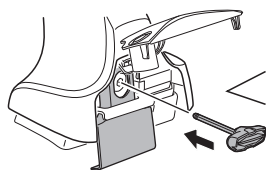
7



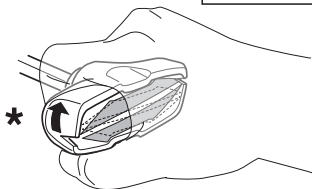
480R/754



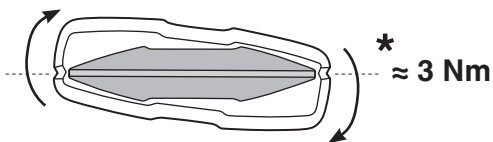
480



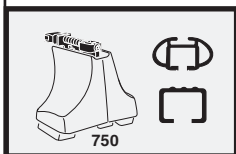
3 Nm \*



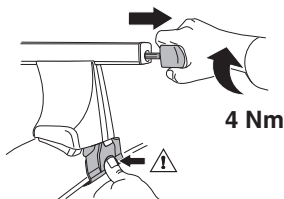
\*



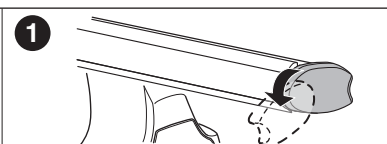
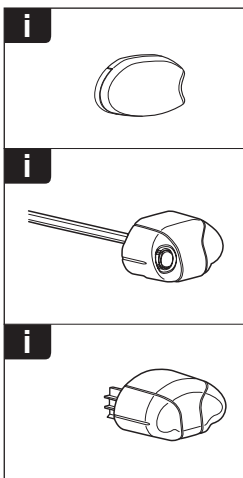
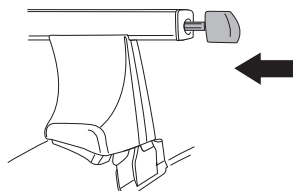
\* ≈ 3 Nm



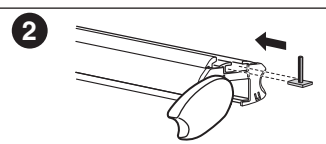
750



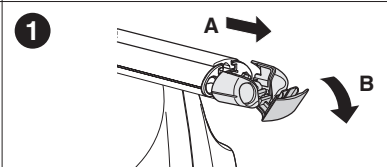
4 Nm



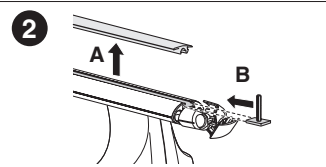
1



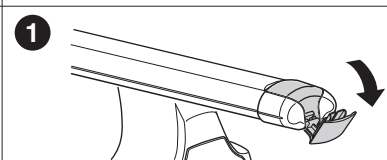
2



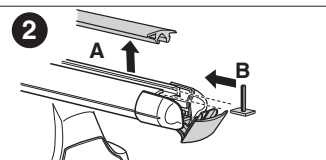
1



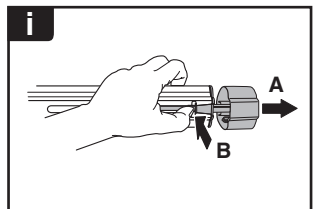
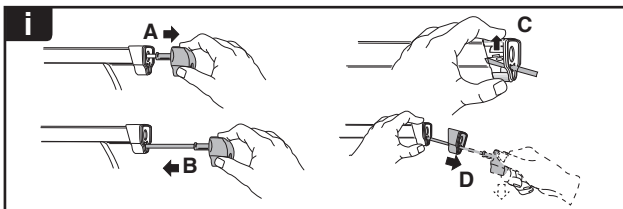
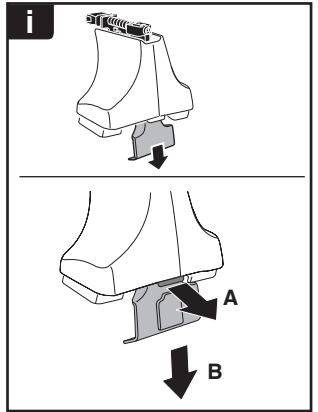
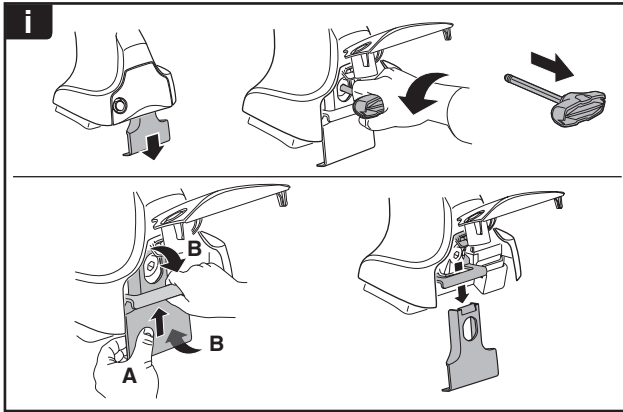
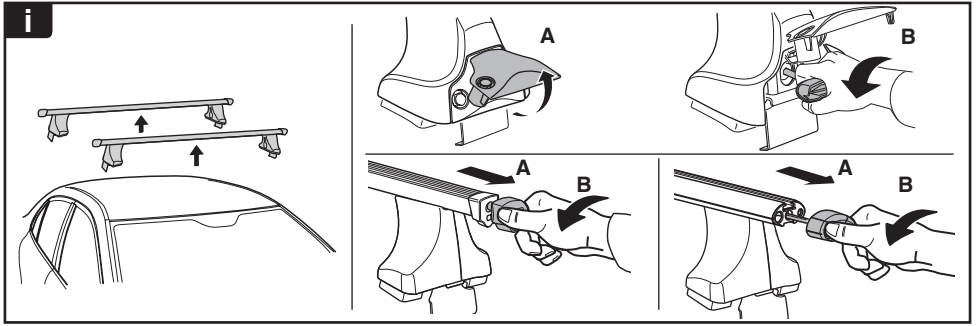
2



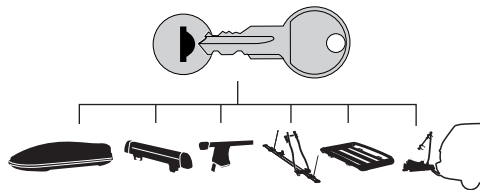
1



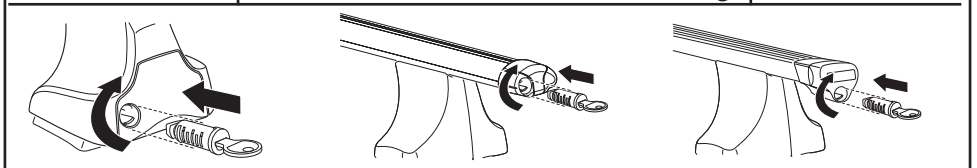
2



**THULE**  
SWEDEN  
**ONE  
KEY  
SYSTEM**



- 544 (x4)
- 596 (x6)
- 588 (x8)
- NA 510 (x10)
- EUR 452 (x12)
- ASIA



WW ▶ Thule Sweden AB, Box 69, 330 33 Hillerstorp, SWEDEN  
NA ▶ Thule Inc., 42 Silvermine Road, Seymour, Connecticut 06483, USA

info@thule.com  
customer.service@thule.com

www.thule.com