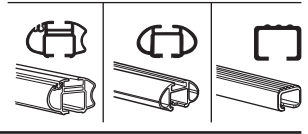
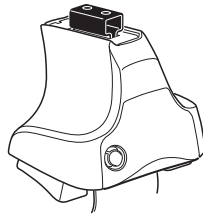


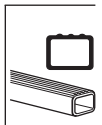
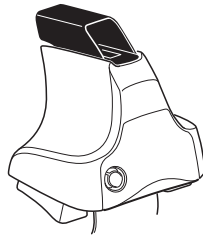
Kit 1441

VOLVO C30, 3-dr Coupé, 07-

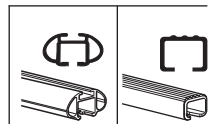
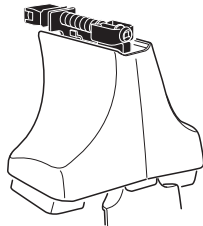
480R
754



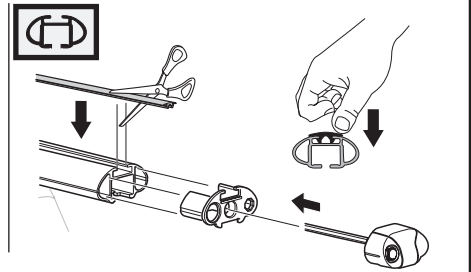
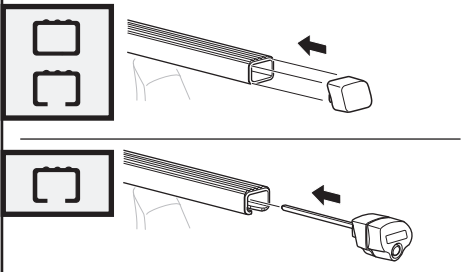
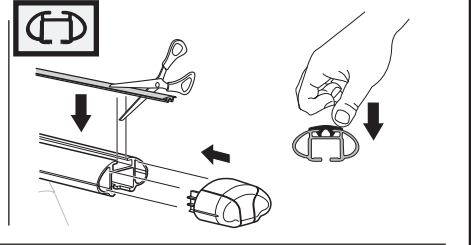
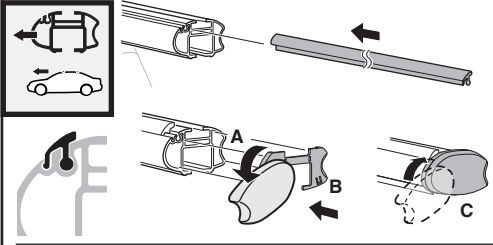
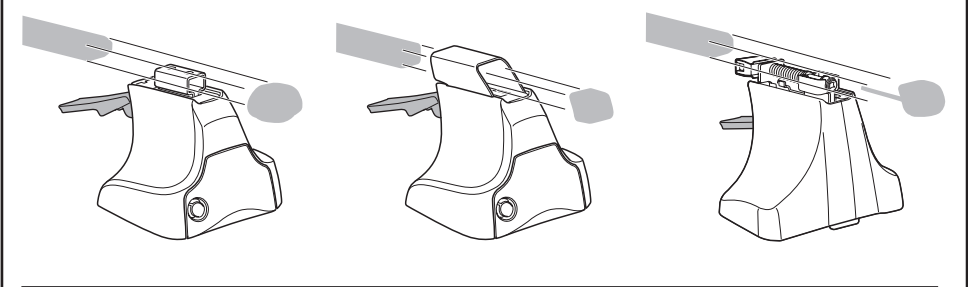
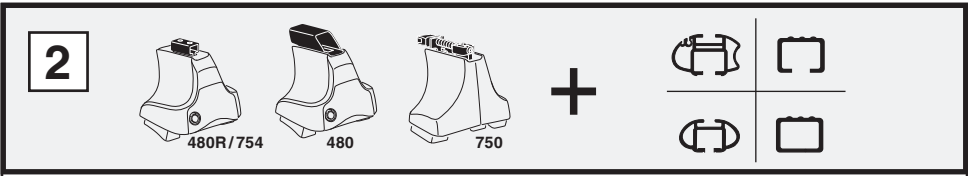
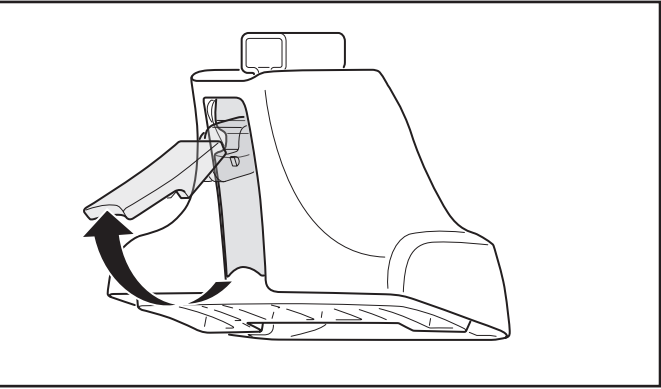
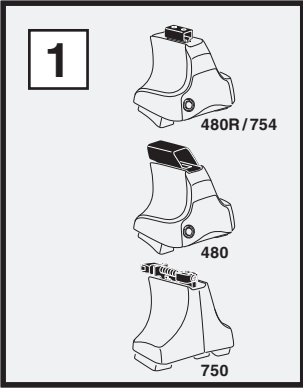
480

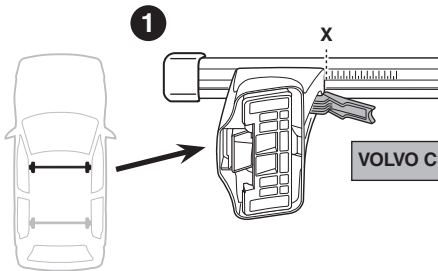
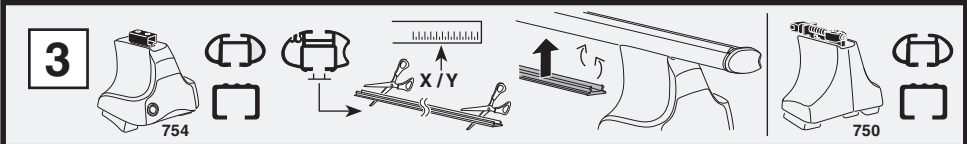


750

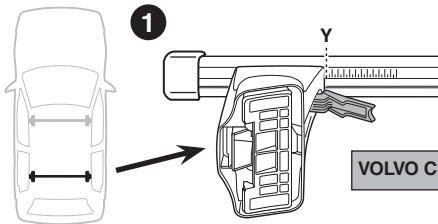


Kit

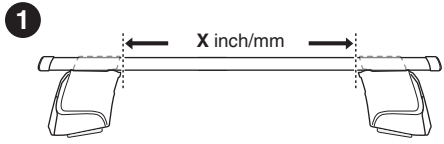
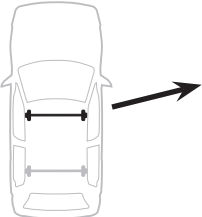
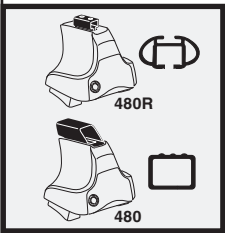




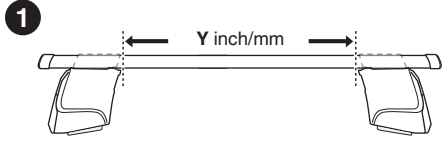
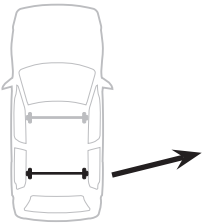
VOLVO C30, 3-dr Coupé, 07-	X
	40,5



VOLVO C30, 3-dr Coupé, 07-	Y
	25



VOLVO C30, 3-dr Coupé, 07-	X inch	X mm
	41 5/8"	1056 mm



VOLVO C30, 3-dr Coupé, 07-	Y inch	Y mm
	35 1/2"	901 mm



4

VOLVO C30, 3-dr Coupé, 07-

204



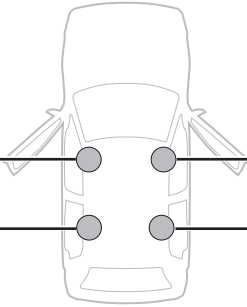
889



206



842



273



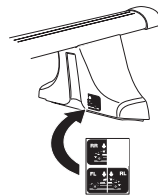
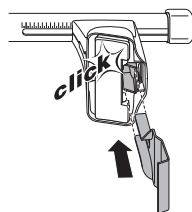
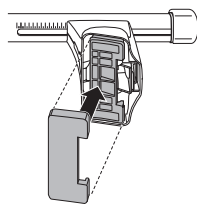
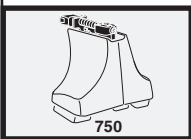
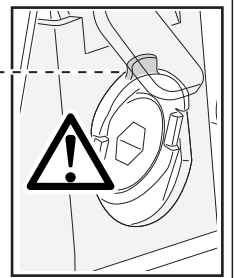
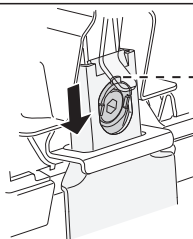
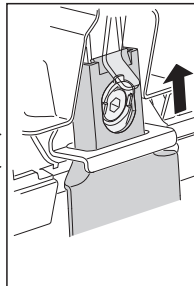
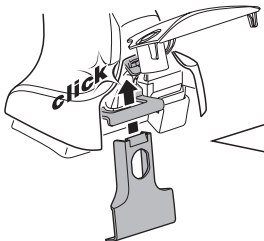
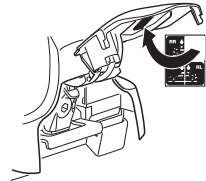
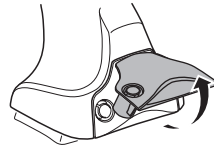
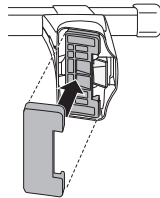
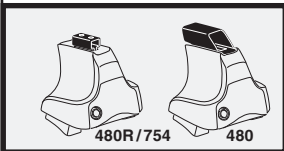
841



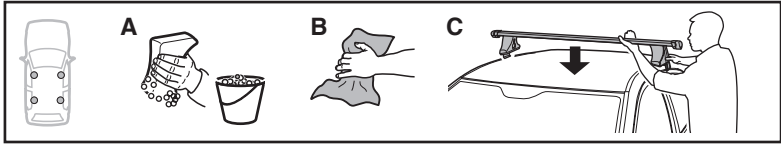
274



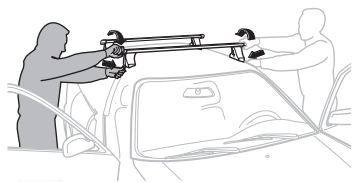
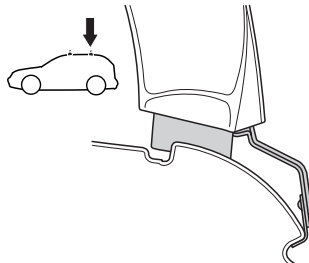
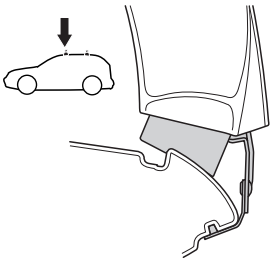
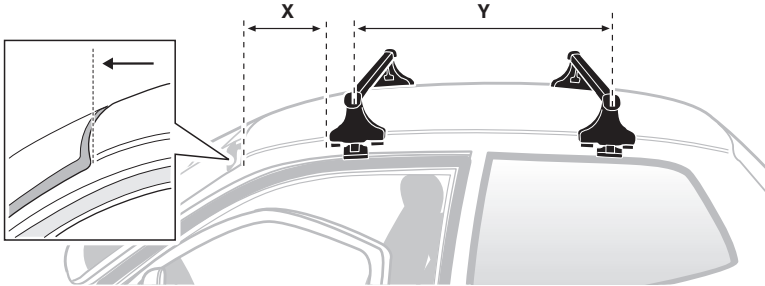
841



5



VOLVO C30, 3-dr Coupé, 07-	X mm	Y mm	X inch	Y inch
	220 mm	770 mm	8 5/8"	30 3/8"



- GB/US Tighten alternately
- D Die Schrauben abwechselnd anziehen
- F Serrer alternativement chaque côté
- NL Afwisselend aan de linker- en de rechterkant aandraaien
- I Alternare il serraggio delle viti
- E Apretar alternativamente
- PT Aperte alternadamente
- S Dra åt växelvis

- FIN Kierrä vuorotellen
- EST Pinguldage vaheldumisi
- LAT Pielvelciet pamišus
- LIT Užsukinėkite pakaitomis
- PL Śruby dokręcaj naprzemiennie
- RU Затягивайте попеременно
- CZ Pokręťta bagażníka dokręcaj dokręcaj naprzemiennie.
- SK Doťahujte striedavo
- SLO Privijajte izmenično.
- HR Naizmjenično zategnite
- HU Egymástól függetlenül szorítandó
- GR Σφιγγετε εναλλάξ
- TR Dönüşümlü sıkın
- 中文 交替拧紧
- 한국어 번갈아 가며 조이십시오.
- 日本語 交互に締め付けてください。
- ไทย ชั้้นแบบสลับ

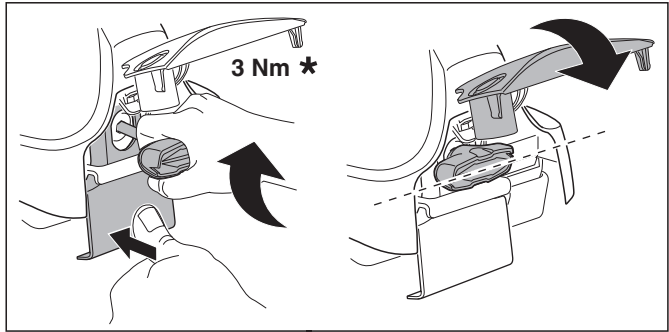
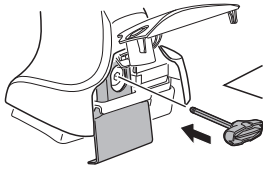
6



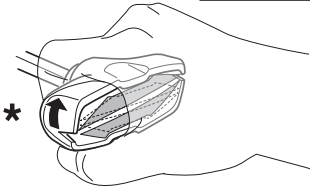
480R/754



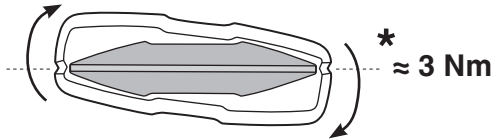
480



3 Nm *



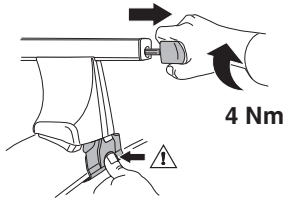
*



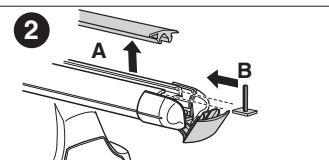
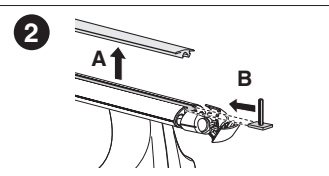
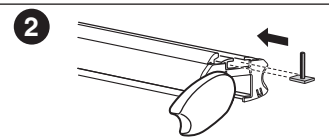
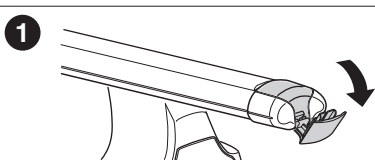
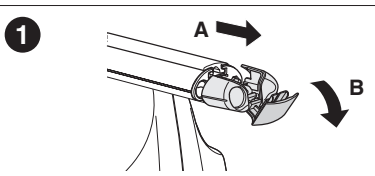
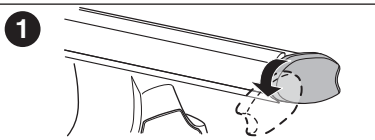
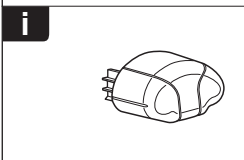
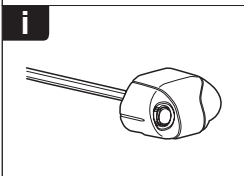
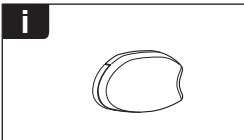
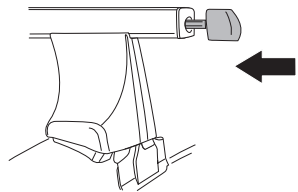
* ≈ 3 Nm

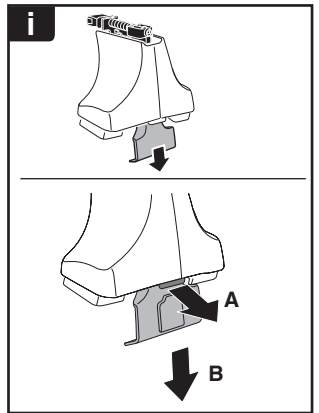
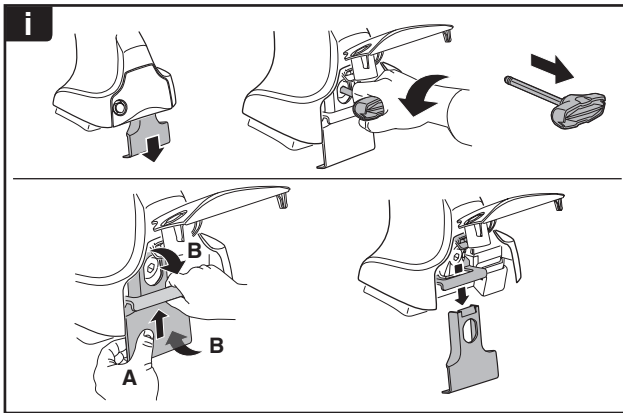
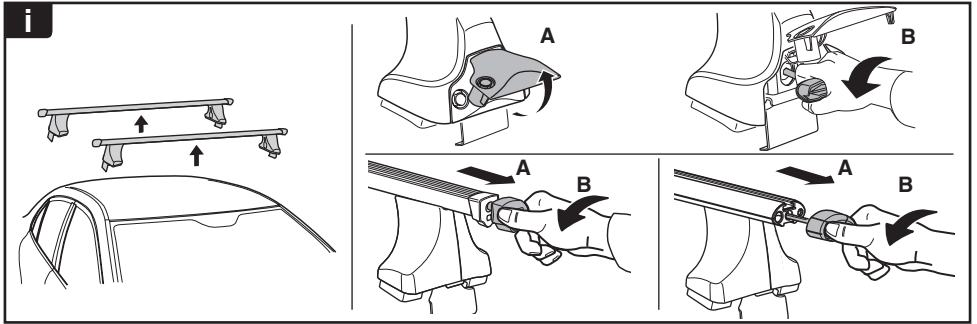


750



4 Nm





THULE
SWEDEN
**ONE
KEY
SYSTEM**



- 544 (x4)
- 596 (x6)
- 588 (x8)
- NA 510 (x10)
- EUR 452 (x12)
- ASIA



WW ▶ Thule Sweden AB, Box 69, 330 33 Hillerstorp, SWEDEN
NA ▶ Thule Inc., 42 Silvermine Road, Seymour, Connecticut 06483, USA

info@thule.com
customer.service@thule.com

www.thule.com