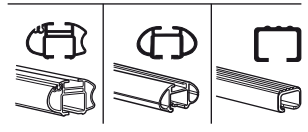
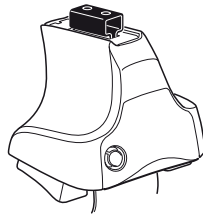


Kit 1396

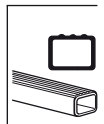
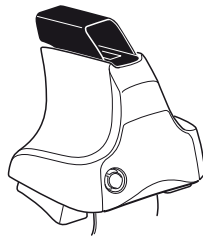
KIA Rio (Mk II), 4-dr Sedan, 05–

KIA Rio (Mk II), 5-dr Hatchback, 05–

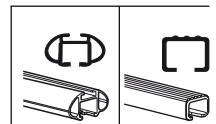
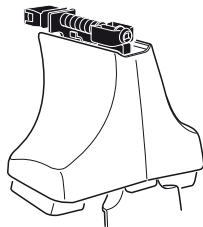
480R
754



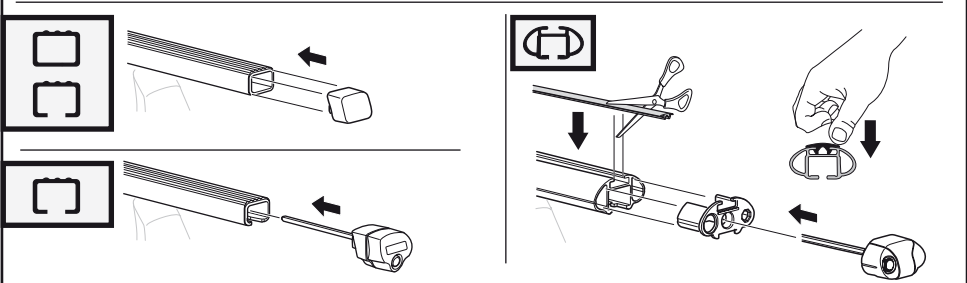
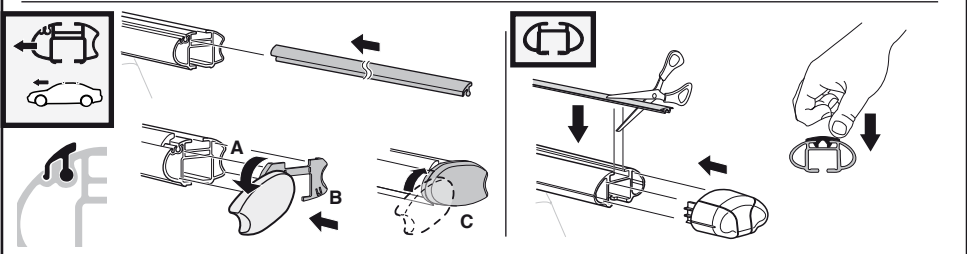
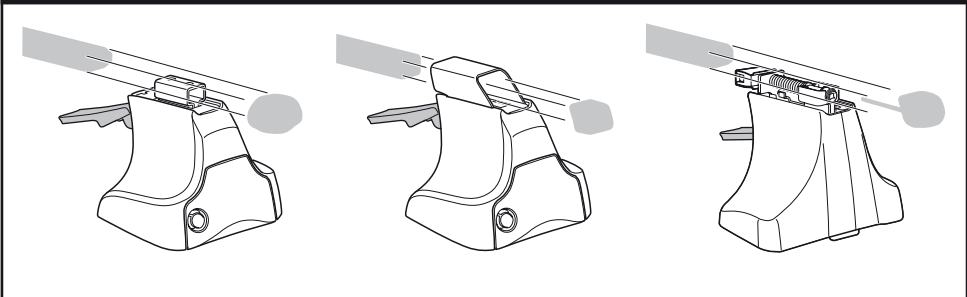
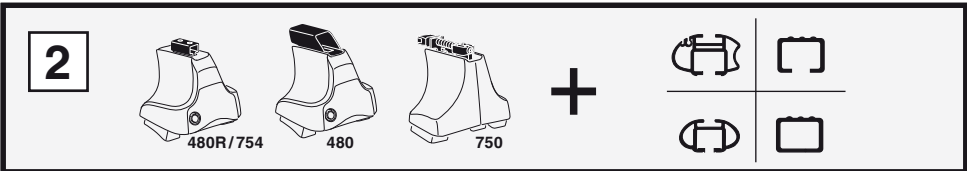
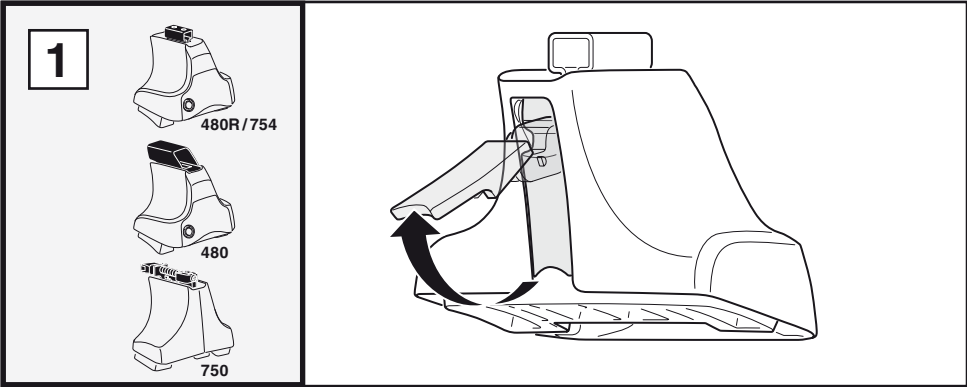
480



750



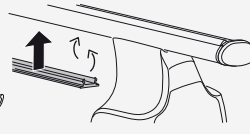
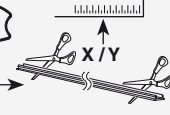
Kit



3



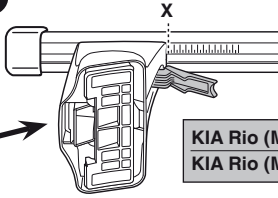
754



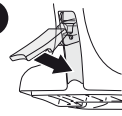
750



1

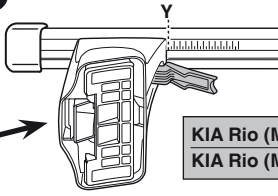


2

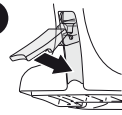


	X
KIA Rio (Mk II), 4-dr Sedan, 05-	35
KIA Rio (Mk II), 5-dr Hatchback, 05-	35

1



2



	Y
KIA Rio (Mk II), 4-dr Sedan, 05-	33,5
KIA Rio (Mk II), 5-dr Hatchback, 05-	32,5

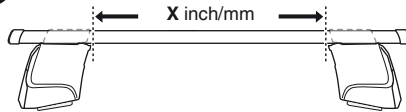


480R

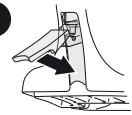


480

1

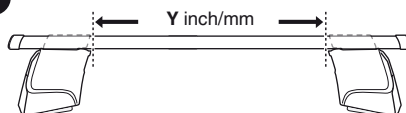


2

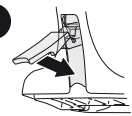


	X inch	X mm
KIA Rio (Mk II), 4-dr Sedan, 05-	39 ³ / ₈ "	1001 mm
KIA Rio (Mk II), 5-dr Hatchback, 05-	39 ³ / ₈ "	1001 mm

1



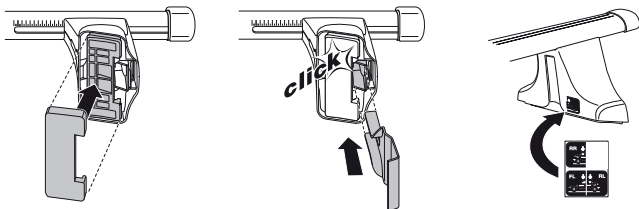
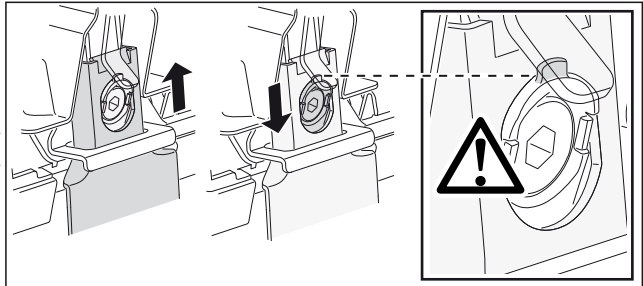
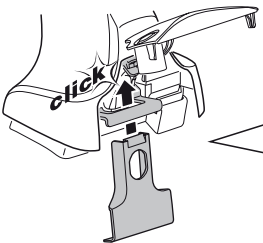
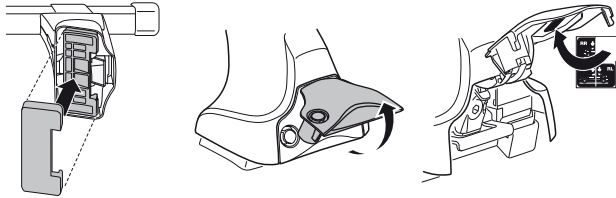
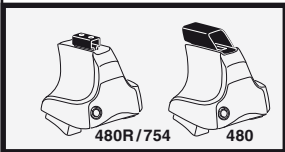
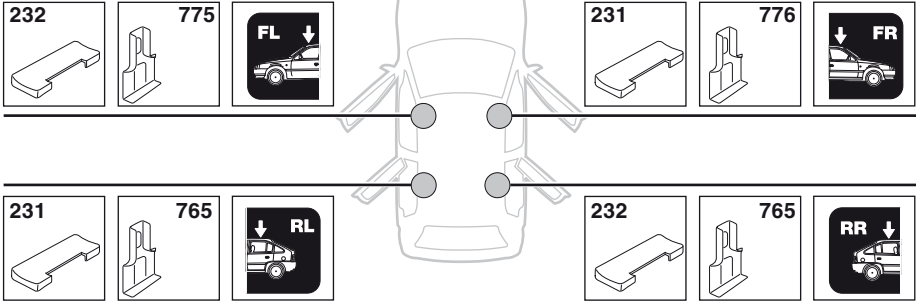
2



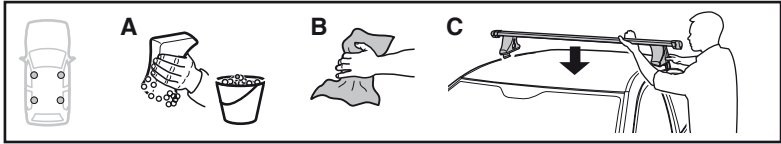
	Y inch	Y mm
KIA Rio (Mk II), 4-dr Sedan, 05-	38 ⁷ / ₈ "	986 mm
KIA Rio (Mk II), 5-dr Hatchback, 05-	38 ³ / ₈ "	976 mm

4

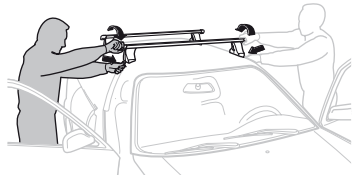
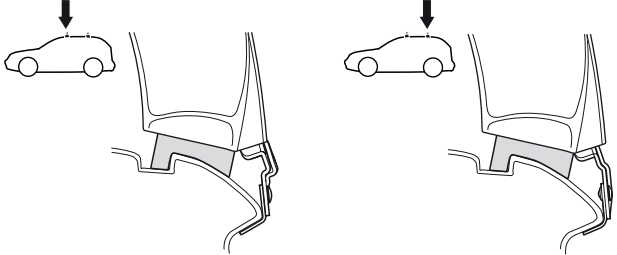
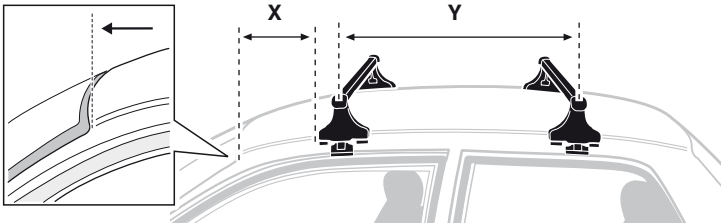
KIA Rio (Mk II), 4-dr Sedan, 05–
 KIA Rio (Mk II), 5-dr Hatchback, 05–



5



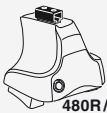
	X mm	Y mm	X inch	Y inch
KIA Rio (Mk II), 4-dr Sedan, 05-	200 mm	650 mm	7 7/8"	25 5/8"
KIA Rio (Mk II), 5-dr Hatchback, 05-	215 mm	670 mm	8 1/2"	26 3/8"



- GB/US** Tighten alternately
- D** Die Schrauben abwechselnd anziehen
- F** Serrer alternativement chaque côté
- NL** Afwisselend aan de linker- en de rechterkant aandraaien
- I** Alternare il serraggio delle viti
- E** Apretar alternativamente
- PT** Aperte alternadamente
- S** Dra åt växelvis

- FIN** Kierrä vuorotellen
- EST** Pinguldage vaheldumisi
- LAT** Pielieciet pamīšus
- LIT** Užsukinėkite pakaitomis
- PL** Śruby dokręcaj naprzemiennie
- RU** Затягивайте попеременно
- CZ** Pokręťta bagażníka dokręcaj dokręcaj naprzemiennie.
- SK** Doťahujte striedavo
- SLO** Privijajte izmenično.
- HR** Naizmjenično zategnite
- HU** Egymástól függetlenül szorítandó
- GR** Σφίγγετε εναλλάξ
- TR** Dönüşümlü sıkın
- 中文** 交替拧紧
- 한국어** 번갈아 가며 조이십시오.
- 日本語** 交互に締め付けてください。
- ไทย** ชั้้นโน้แบบสลับ

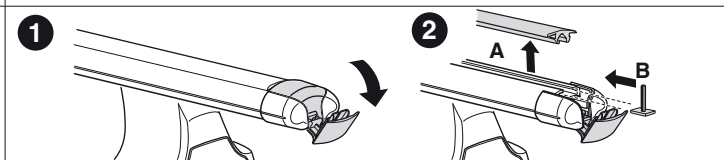
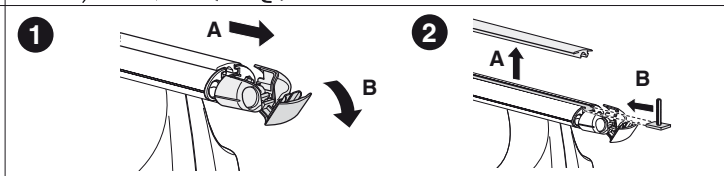
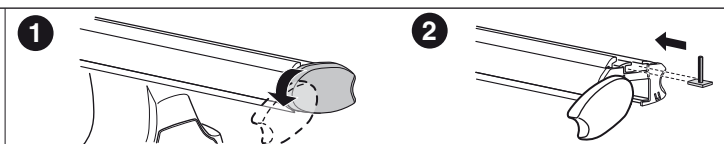
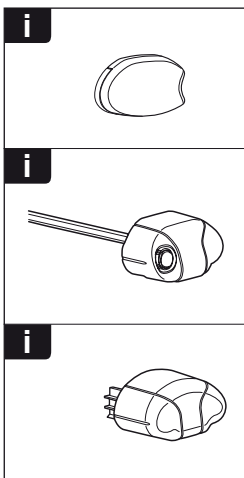
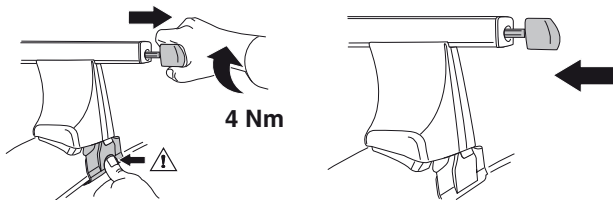
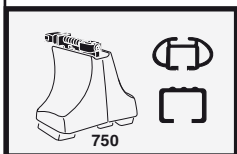
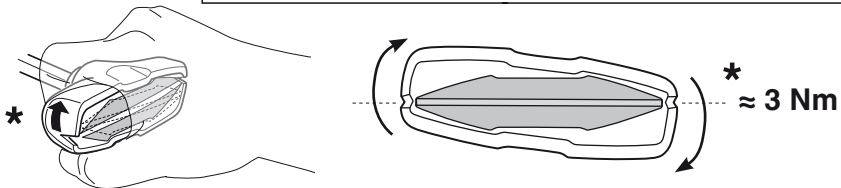
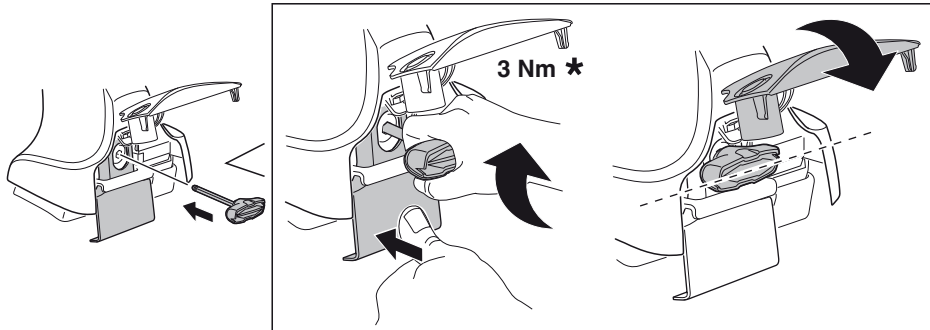
6

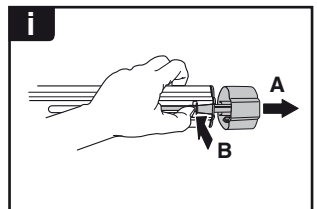
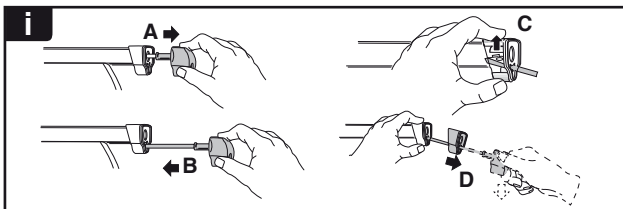
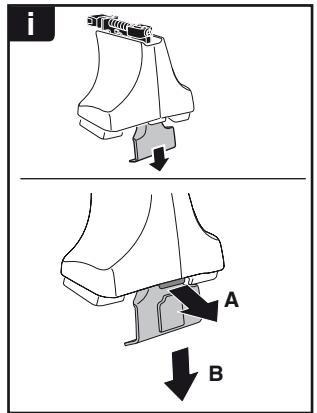
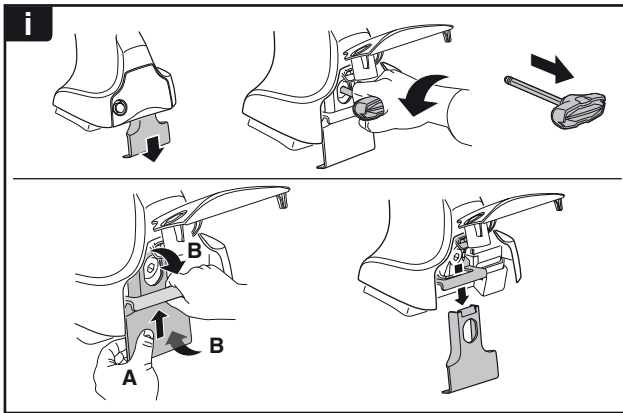
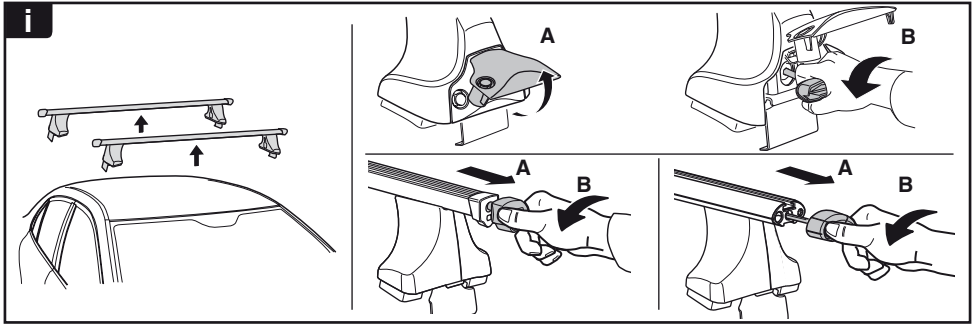


480R/754

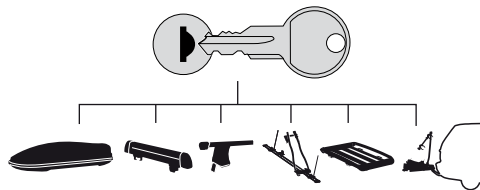


480

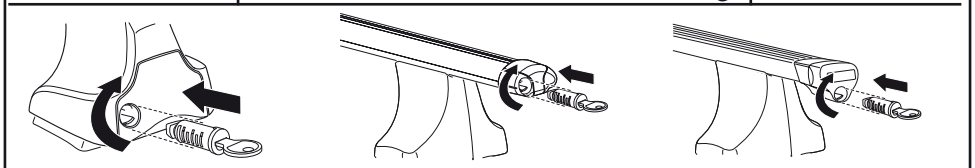




THULE
SWEDEN
**ONE
KEY
SYSTEM**



- 544 (x4)
- 596 (x6)
- 588 (x8)
- NA 510 (x10)
- EUR 452 (x12)
- ASIA



WW ▶ Thule Sweden AB, Box 69, 330 33 Hillerstorp, SWEDEN
NA ▶ Thule Inc., 42 Silvermine Road, Seymour, Connecticut 06483, USA

info@thule.com
customer.service@thule.com

www.thule.com