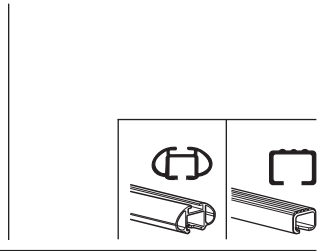
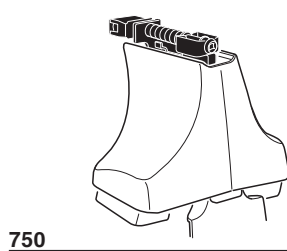
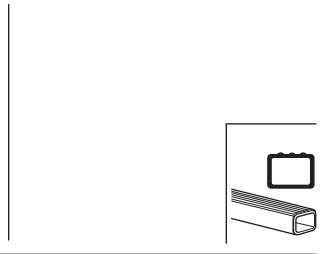
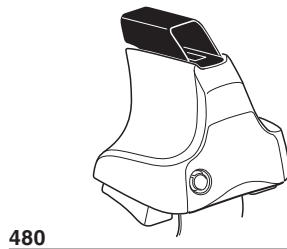
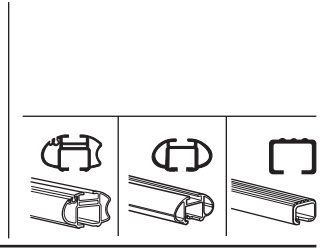
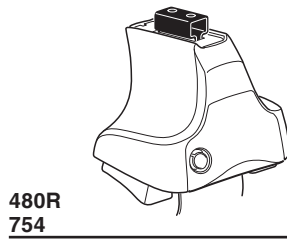


# Kit 1443

LAND ROVER Freelander 2, 5-dr SUV, 07-



xx kg  
 xx lbs + 7 kg  
 15,4 lbs = **Max. 60 kg**  
**Max. 132 lbs**

80 km/h 50 Mph  
 130 km/h 80 Mph  
 40 km/h 25 Mph  
**km/h Mph**

**THULE**  
**Kit XXXX**  
**instructions**

**x1** **x4** **x4** **x4**

**480R/754**

---

**x1** **x4** **x4** **x4**

**480**

---

**x1** **x4** **x4**

**750**

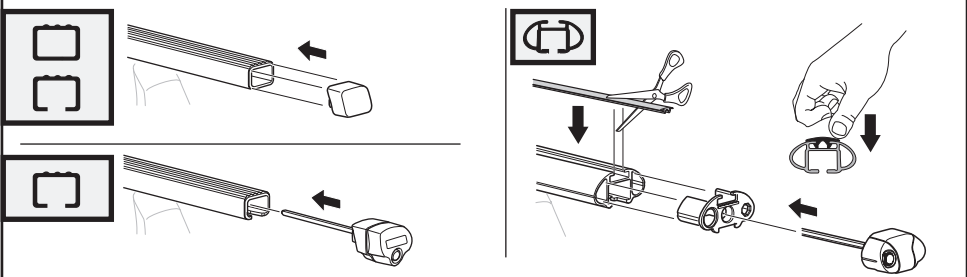
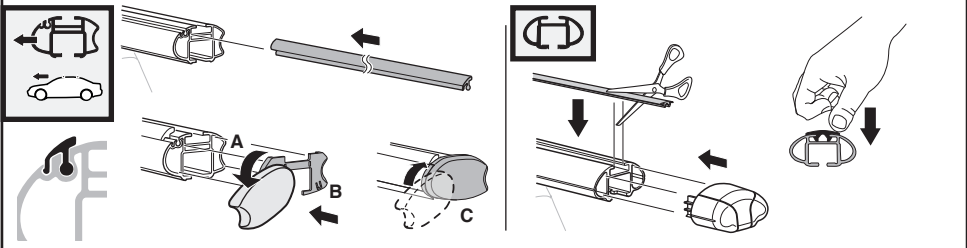
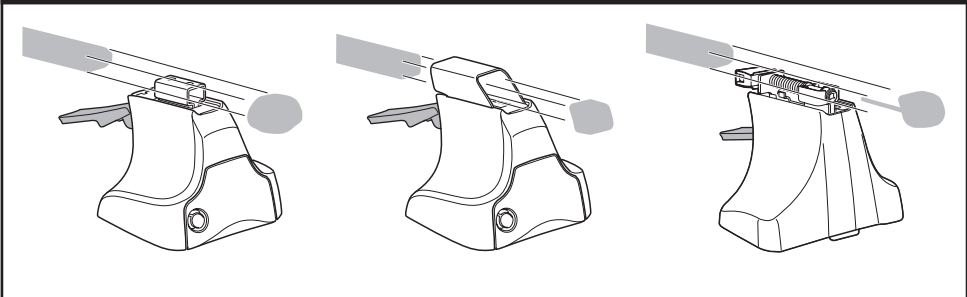
x2	x2	x2	x2	x2
x2	x2	x2	x2	x2
x2	x2	x4	x4	x2
x4		x4		

**890** **x 4**

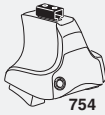
**225** **x 4**

**x 1**

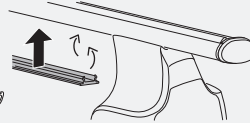
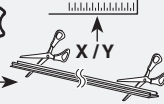
**Kit**



**3**



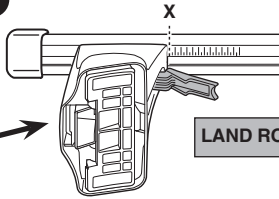
754



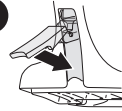
750



**1**



**2**

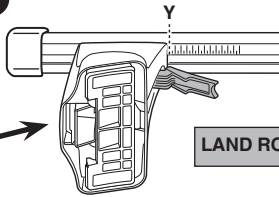


LAND ROVER Freelander 2, 5-dr SUV, 07-

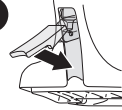
X  
45.5



**1**



**2**



LAND ROVER Freelander 2, 5-dr SUV, 07-

Y  
42.5

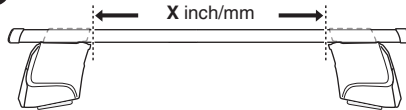


480R

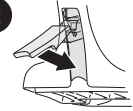


480

**1**



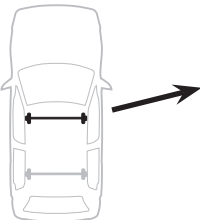
**2**



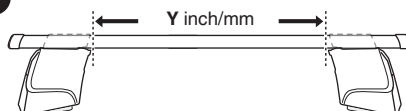
LAND ROVER Freelander 2, 5-dr SUV, 07-

X inch    X mm

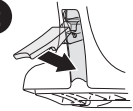
43 1/2"    1106 mm



**1**



**2**



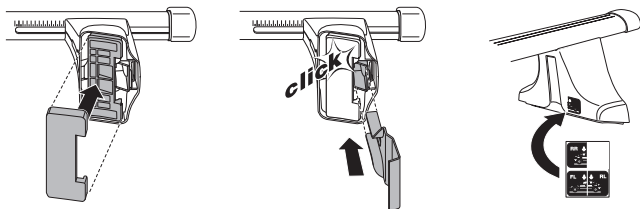
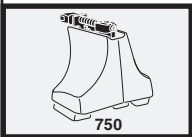
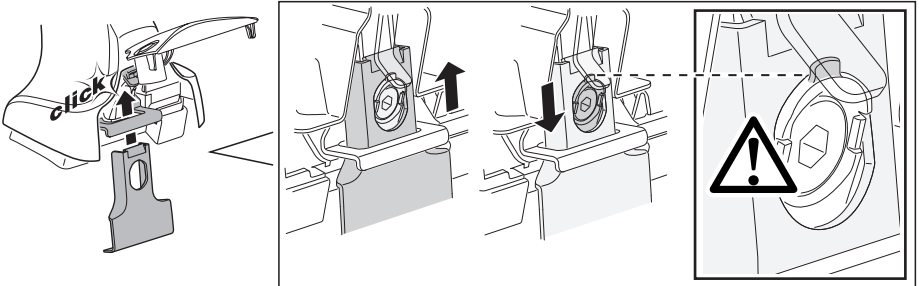
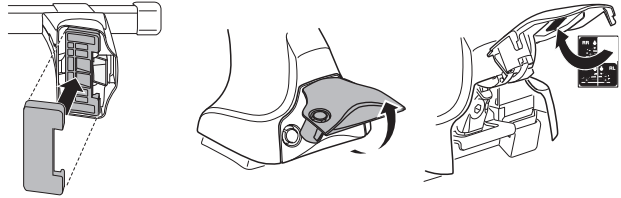
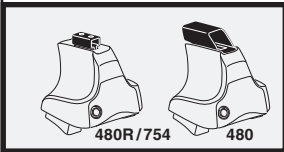
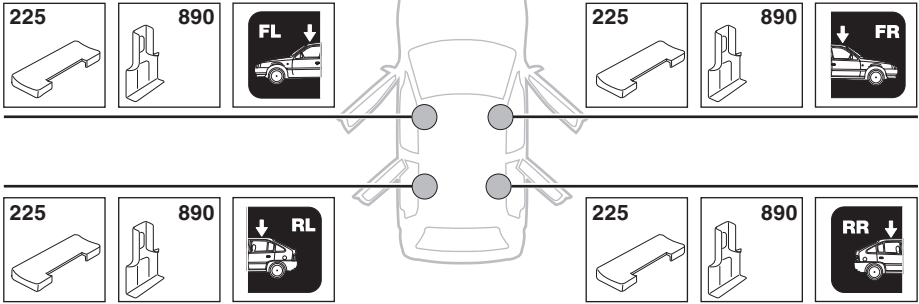
LAND ROVER Freelander 2, 5-dr SUV, 07-

Y inch    Y mm

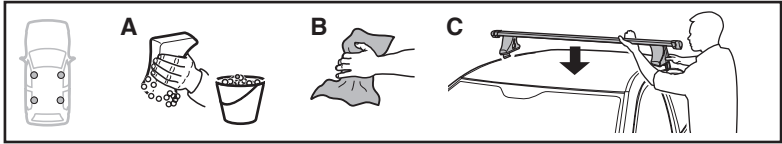
42 3/8"    1076 mm

4

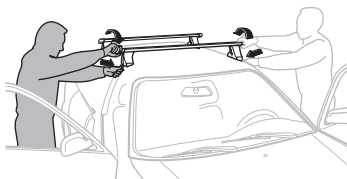
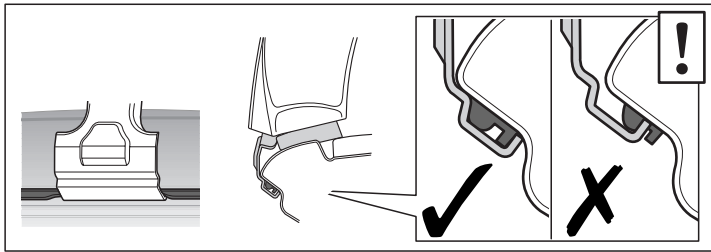
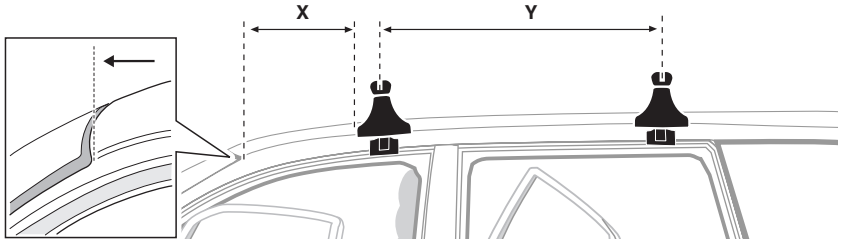
LAND ROVER Freelander 2, 5-dr SUV, 07-



5



	X mm	Y mm	X inch	Y inch
LAND ROVER Freelander 2, 5-dr SUV, 07–	310 mm	700 mm	12 1/4"	27 1/2"



**GB/US** Tighten alternately

**D** Die Schrauben abwechselnd anziehen

**F** Serrer alternativement chaque côté

**NL** Afwisselend aan de linker- en de rechterkant aandraaien

**I** Alternare il serraggio delle viti

**E** Serrare alternativamente

**PT** Aperte alternadamente

**S** Dra åt växelvis

**FIN** Kierrä vuorotellen

**EST** Pinguldage vaheldumisi

**LAT** Pielieciet pamišus

**LIT** Užsukinėkite pakaitomis

**PL** Śruby dokręcaj naprzemiennie

**RU** Затягивайте попеременно

**CZ** Pokręťta bagażníka dokręcaj dokręcaj naprzemiennie.

**SK** Doťahujte striedavo

**SLO** Privijajte izmenično.

**HR** Naizmjenično zategnite

**HU** Egymástól függetlenül szorítandó

**GR** Σφιγγετε εναλλάξ

**TR** Dönüşümlü sıkın

**中文** 交替拧紧

**한국어** 번갈아 가며 조이십시오.

**日本語** 交互に締め付けてください。

**ไทย** ชันโนแบบสลับ

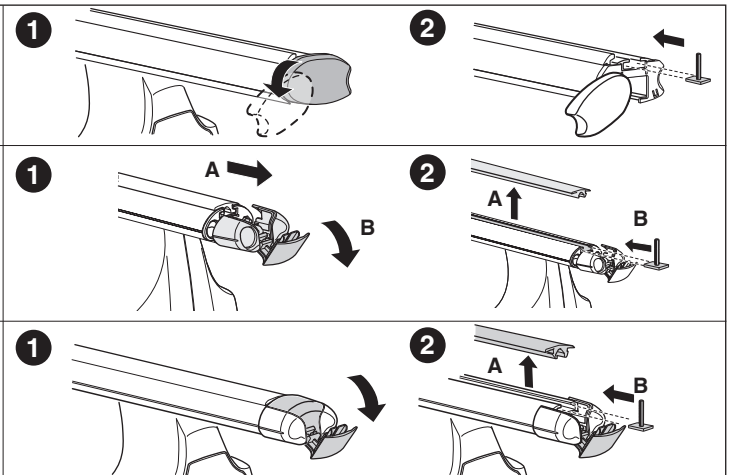
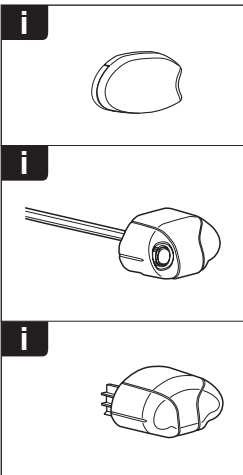
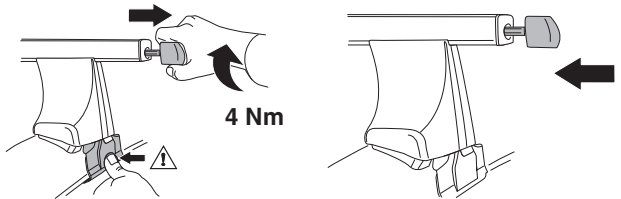
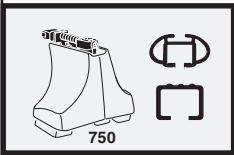
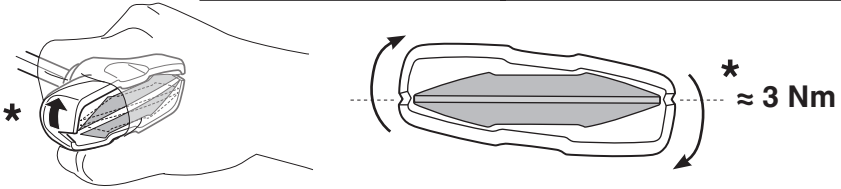
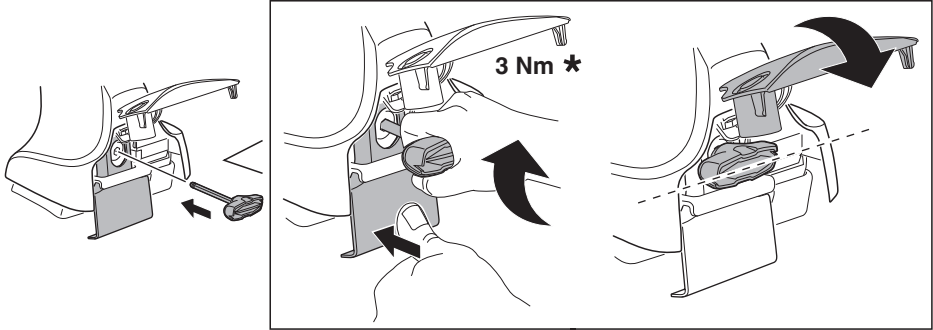
6

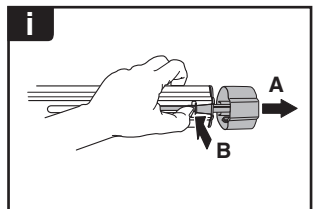
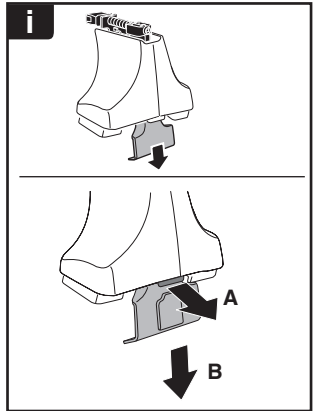
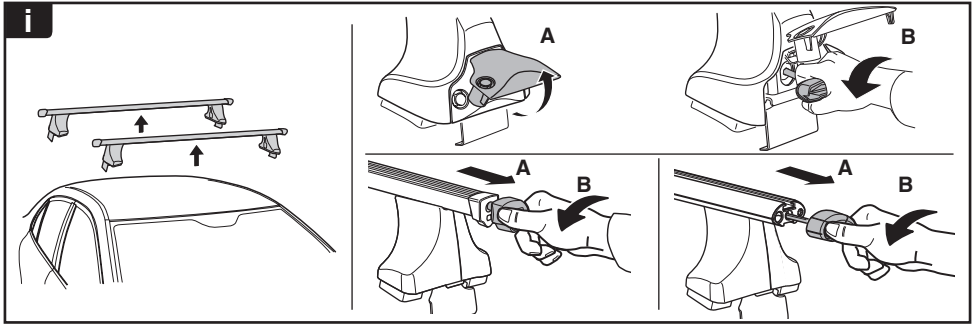


480R/754



480

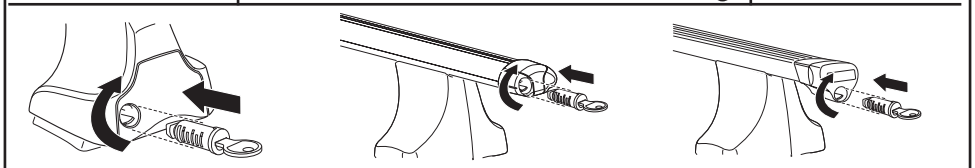




**THULE**  
SWEDEN  
**ONE  
KEY  
SYSTEM**



- 544 (x4)
- 596 (x6)
- 588 (x8)
- NA 510 (x10)
- EUR 452 (x12)
- ASIA



WW ▶ Thule Sweden AB, Box 69, 330 33 Hillerstorp, SWEDEN  
NA ▶ Thule Inc., 42 Silvermine Road, Seymour, Connecticut 06483, USA

info@thule.com  
customer.service@thule.com

www.thule.com