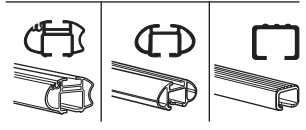
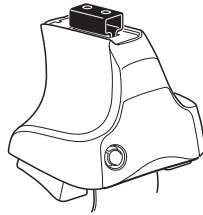


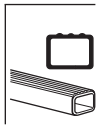
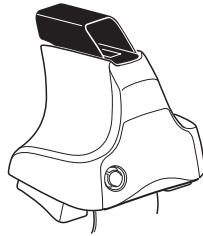
# Kit 1406

VOLKSWAGEN Golf Plus, 5-dr Hatchback, 05  
VOLKSWAGEN Golf Plus, 5-dr Hatchback, 06-

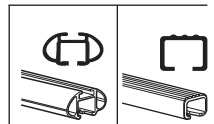
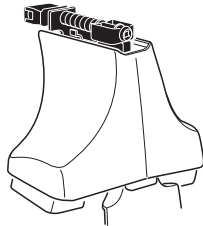
480R  
754



480



750



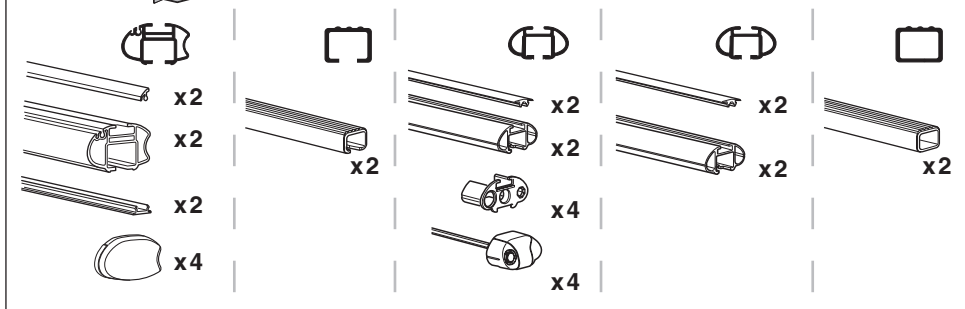
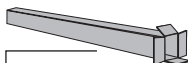
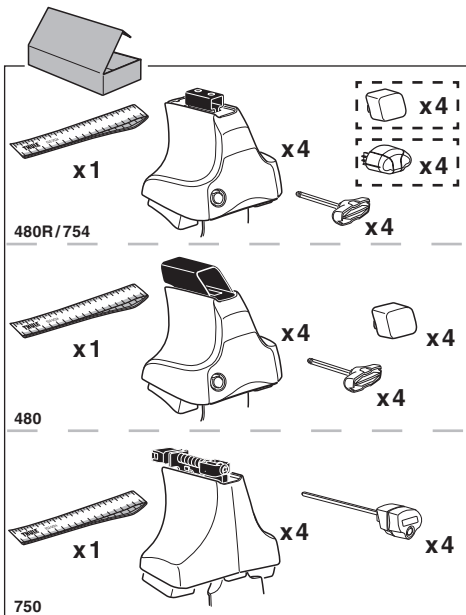
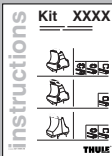
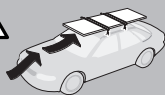
VOLKSWAGEN Golf Plus, 5-dr Hatchback, 05

**Max.**  
75kg/165 lbs



VOLKSWAGEN Golf Plus, 5-dr Hatchback, 06-

**Max.**  
60kg/132 lbs



729 x2



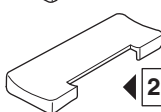
798 x2



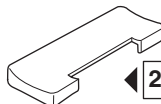
736 x2



207 x1



208 x1

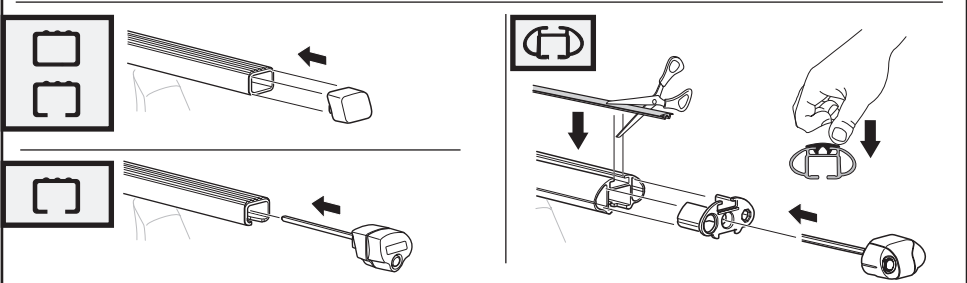
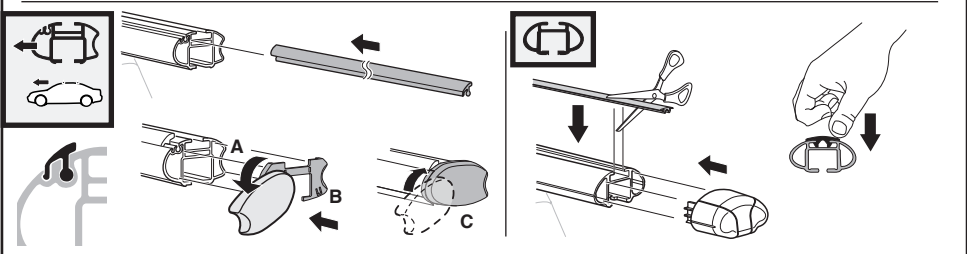
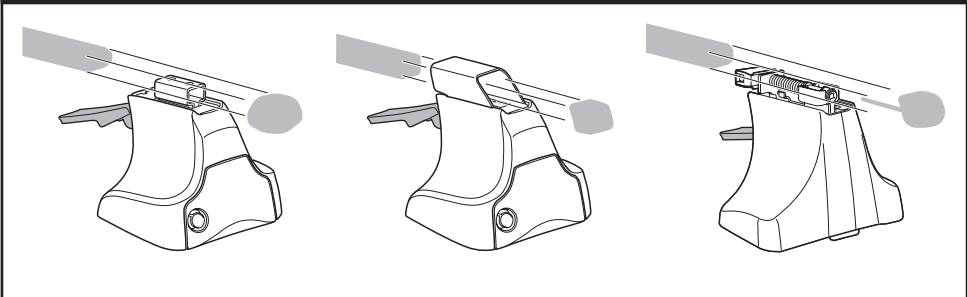
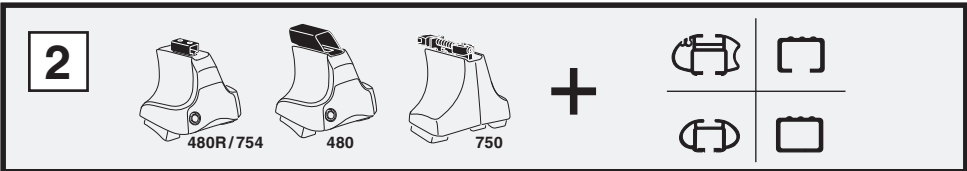
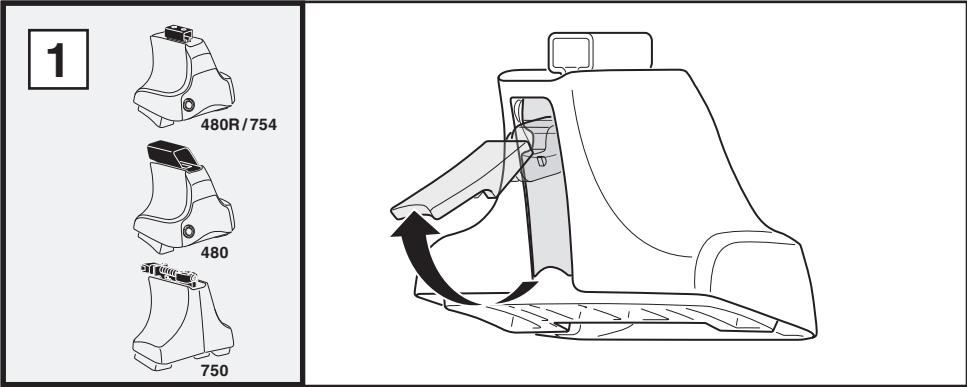


216 x2

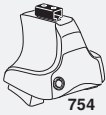


x1

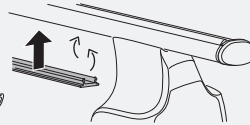
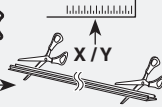
**Kit**



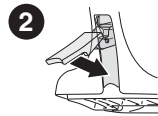
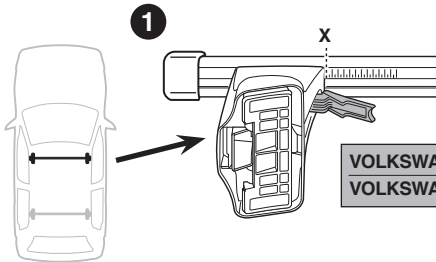
3



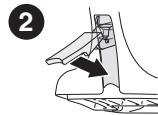
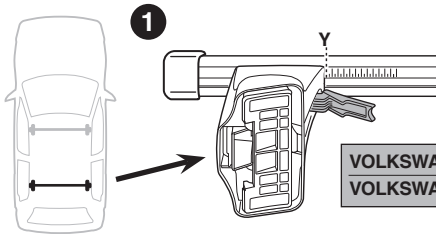
754



750



	X
VOLKSWAGEN Golf Plus, 5-dr Hatchback, 05	37
VOLKSWAGEN Golf Plus, 5-dr Hatchback, 06-	37



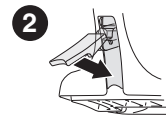
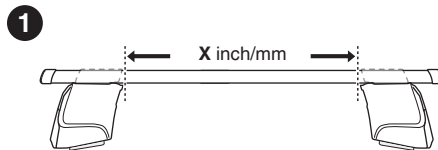
	Y
VOLKSWAGEN Golf Plus, 5-dr Hatchback, 05	30
VOLKSWAGEN Golf Plus, 5-dr Hatchback, 06-	30



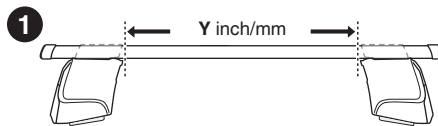
480R



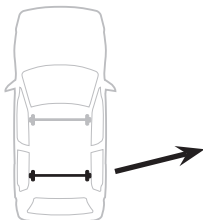
480



	X inch	X mm
VOLKSWAGEN Golf Plus, 5-dr Hatchback, 05	40 1/4"	1021 mm
VOLKSWAGEN Golf Plus, 5-dr Hatchback, 06-	40 1/4"	1021 mm

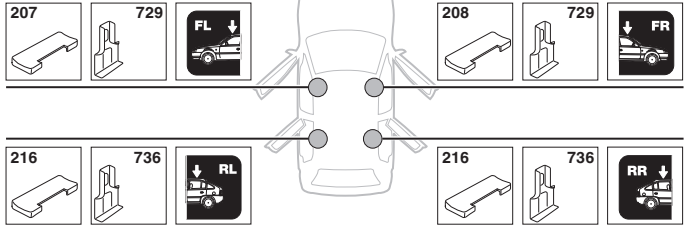


	Y inch	Y mm
VOLKSWAGEN Golf Plus, 5-dr Hatchback, 05	37 1/2"	951 mm
VOLKSWAGEN Golf Plus, 5-dr Hatchback, 06-	37 1/2"	951 mm

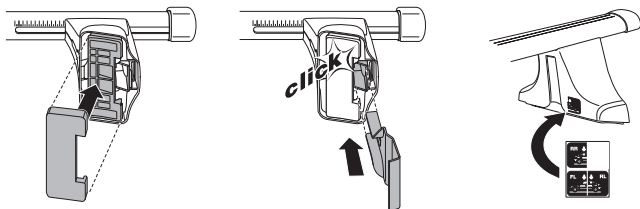
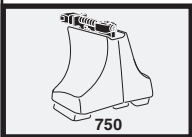
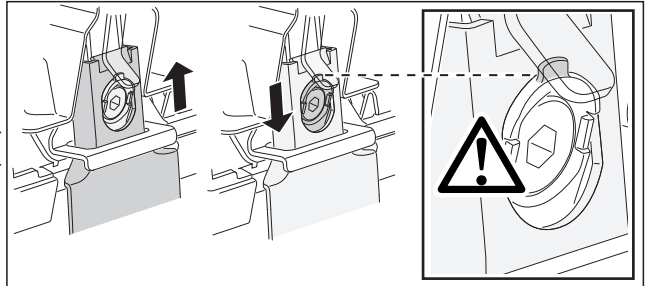
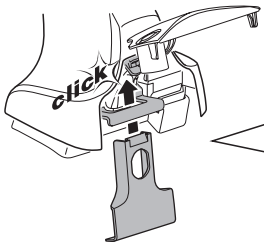
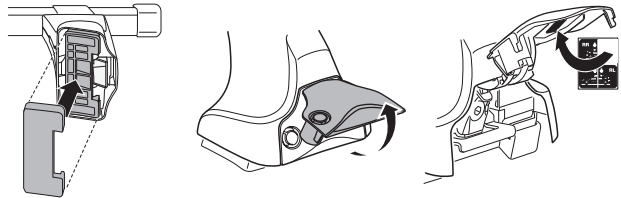
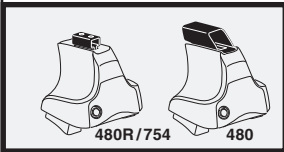
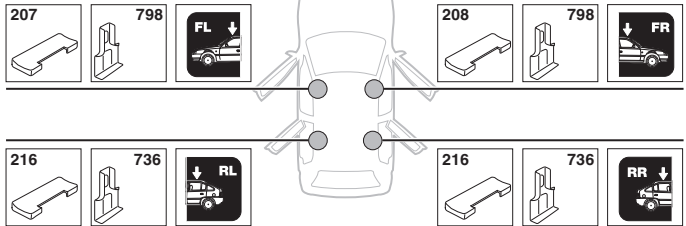


4

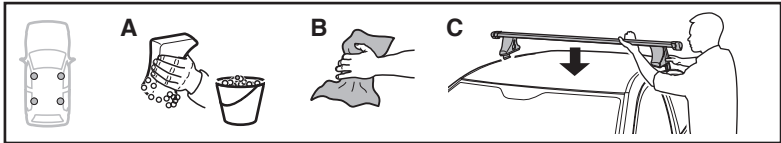
VOLKSWAGEN Golf Plus,  
5-dr Hatchback, 05



VOLKSWAGEN Golf Plus,  
5-dr Hatchback, 06-

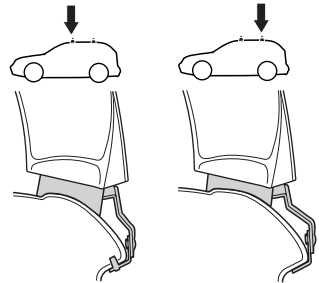
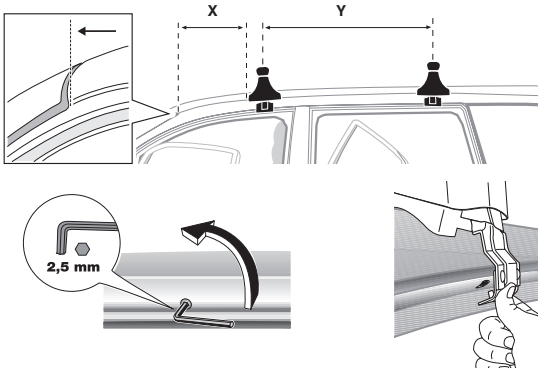


5

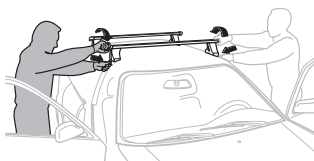
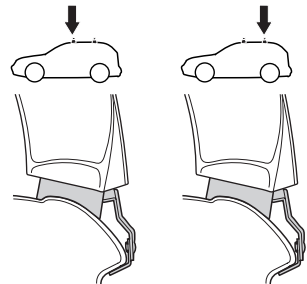
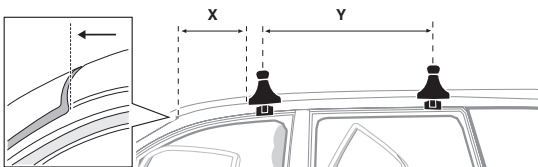


	X mm	Y mm	X inch	Y inch
VOLKSWAGEN Golf Plus, 5-dr Hatchback, 05	228 mm	850 mm	9"	33 1/2"
VOLKSWAGEN Golf Plus, 5-dr Hatchback, 06–	228 mm	850 mm	9"	33 1/2"

**VOLKSWAGEN Golf Plus, 5-dr Hatchback, 05**



**VOLKSWAGEN Golf Plus, 5-dr Hatchback, 06–**



- GB/US** Tighten alternately
- D** Die Schrauben abwechselnd anziehen
- F** Serrer alternativement chaque côté
- NL** Afwisselend aan de linker- en de rechterkant aandraaien
- I** Alternare il serraggio delle viti
- E** Apretar alternativamente
- PT** Aperte alternadamente
- S** Dra åt växelvis
- FIN** Kierrä vuorotellen
- EST** Pinguldage vaheldumisi
- LAT** Pievelciēt pamišus
- LIT** Užsukinėkite pakaitomis
- PL** Śruby dokręcaj naprzemiennie
- RU** Затягивайте попеременно

- CZ** Pokręťta bagažníka dokręcaj dokręcaj naprzemiennie.
- SK** Dofahujte striedavo
- SLO** Privijajte izmenično.
- HR** Naizmjenično zategnite
- HU** Egmástól függetlenül szorítandó
- GR** Σφιγίγες εναλλάξ
- TR** Dönüşümlü sıkın
- 中文** 交替拧紧
- 한국어** 번갈아 가며 조이십시오.
- 日本語** 交互に締め付けてください。
- ไทย** ชั้้นในแบบสลับ

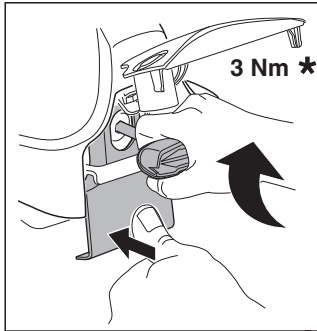
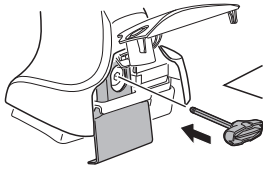
6



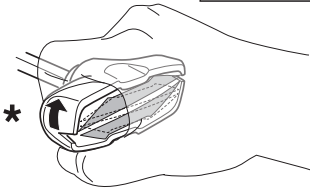
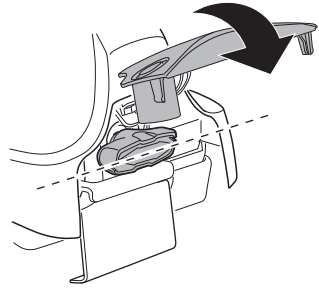
480R/754



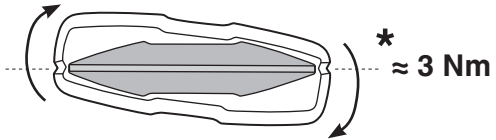
480



3 Nm \*



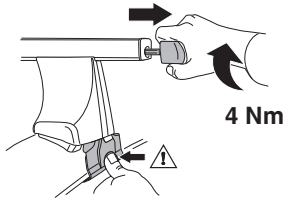
\*



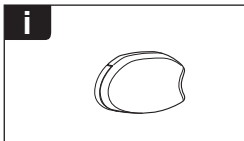
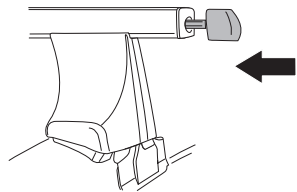
\* ≈ 3 Nm



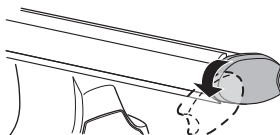
750



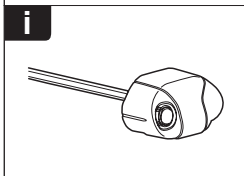
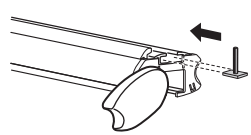
4 Nm



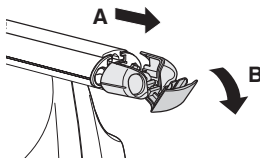
1



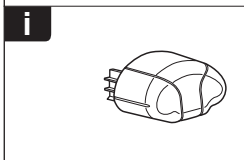
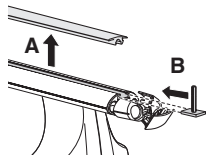
2



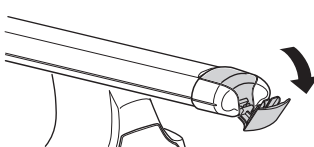
1



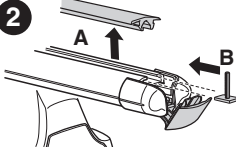
2

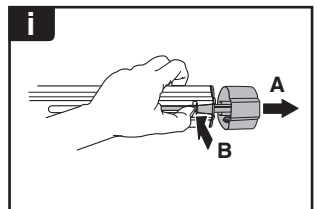
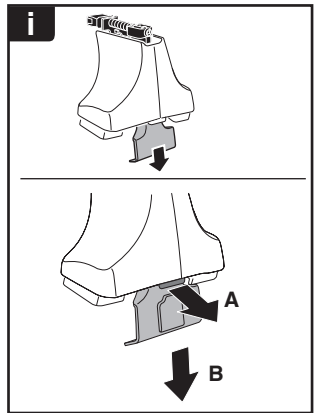
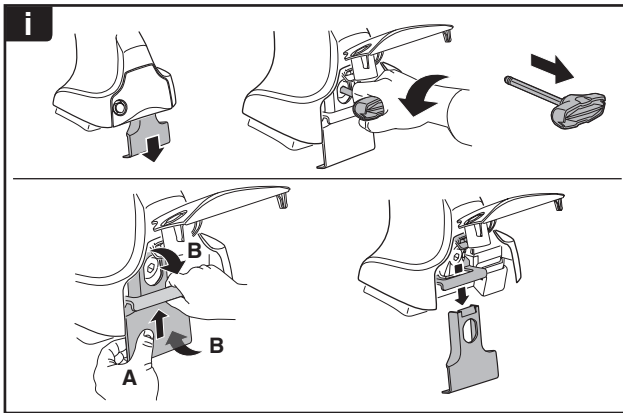
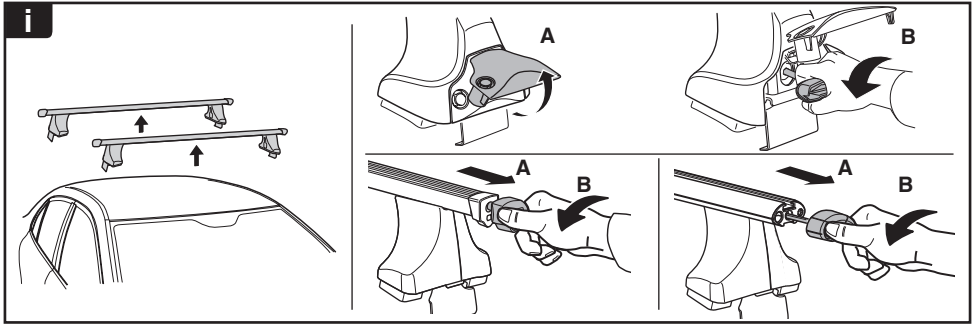


1

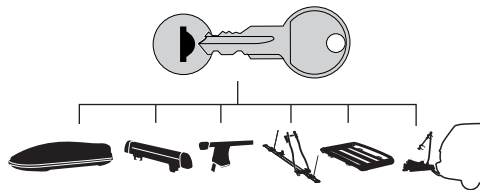


2

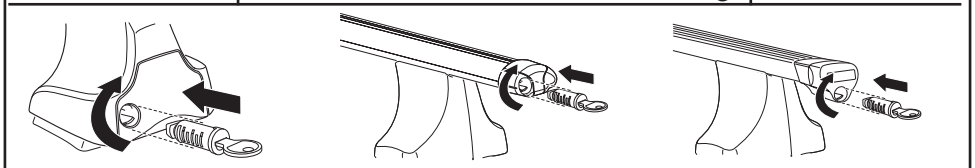




**THULE**  
SWEDEN  
**ONE  
KEY  
SYSTEM**



- 544 (x4)
- 596 (x6)
- 588 (x8)
- NA 510 (x10)
- EUR 452 (x12)
- ASIA



WW ▶ Thule Sweden AB, Box 69, 330 33 Hillerstorp, SWEDEN  
NA ▶ Thule Inc., 42 Silvermine Road, Seymour, Connecticut 06483, USA

info@thule.com  
customer.service@thule.com

www.thule.com