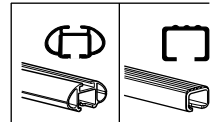
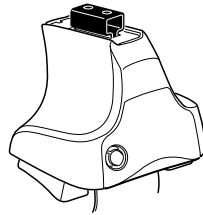


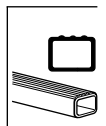
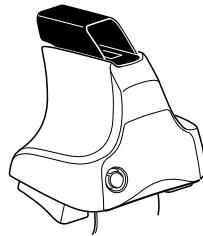
Kit 1594

SKODA Octavia (M.k III), 4-dr Sedan, 09–

480R
754



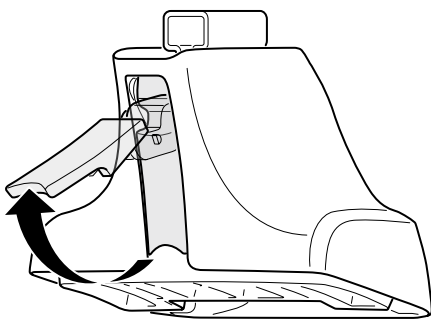
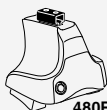
480



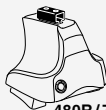
THULE[®]
SWEDEN

ISO 11154-E

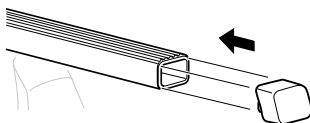
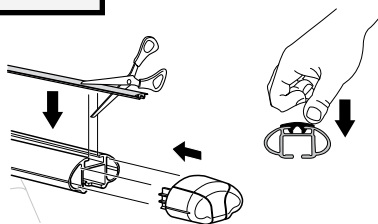
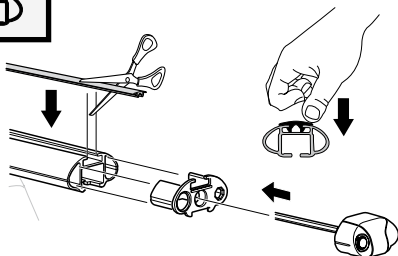
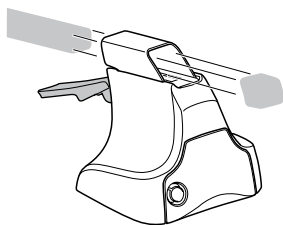
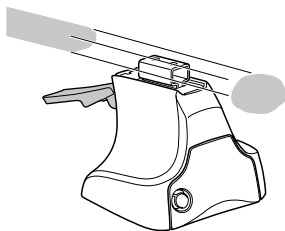
1



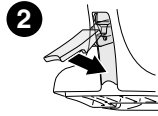
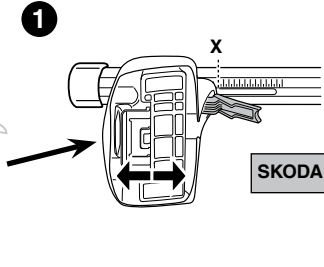
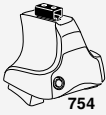
2



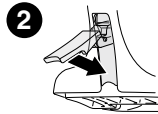
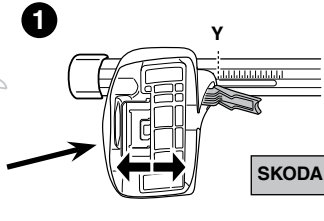
+



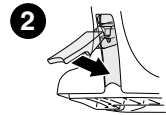
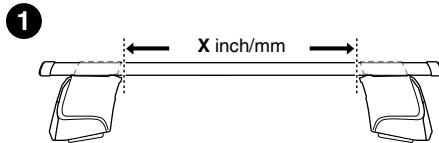
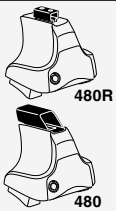
3



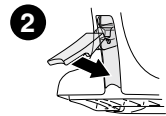
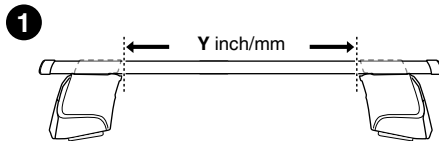
	X
SKODA Octavia (M.k III), 4-dr Sedan, 09–	33



	Y
SKODA Octavia (M.k III), 4-dr Sedan, 09–	29,5



	X inch	X mm
SKODA Octavia (M.k III), 4-dr Sedan, 09–	38 5/8"	981 mm



	Y inch	Y mm
SKODA Octavia (M.k III), 4-dr Sedan, 09–	37 1/4"	946 mm

4



480R/754



480

SKODA Octavia (M.k III), 4-dr Sedan, 09-

179



661



181



673



181



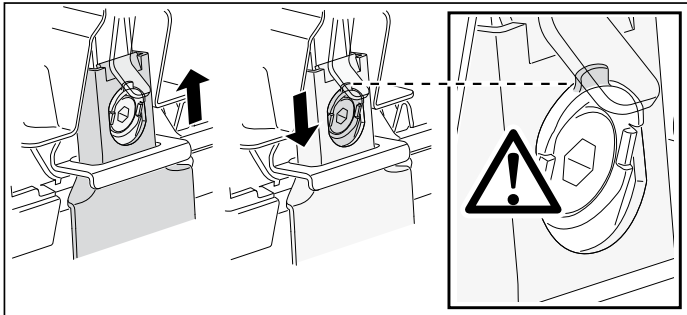
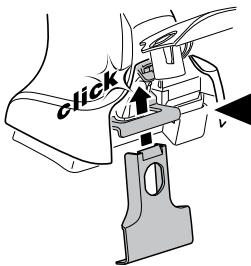
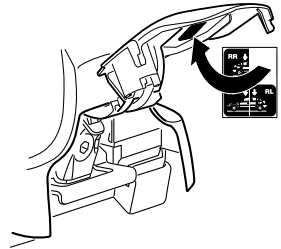
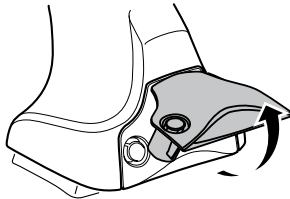
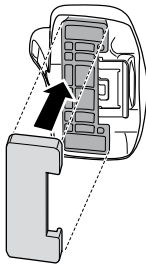
1092



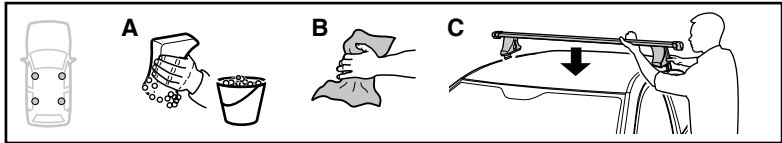
179



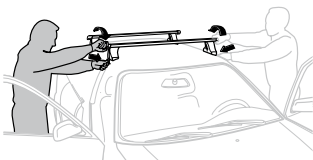
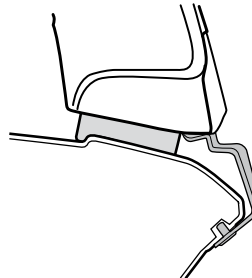
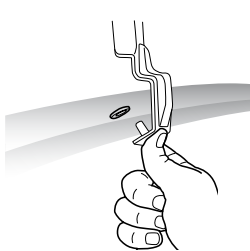
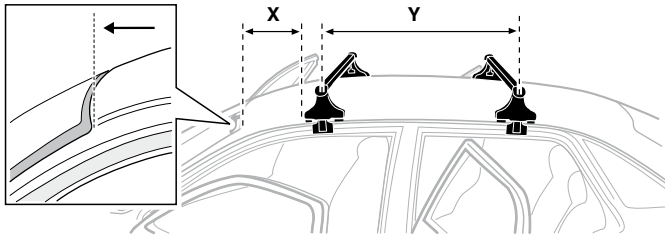
1091



5

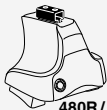


	X mm	Y mm	X inch	Y inch
SKODA Octavia (M.k III), 4-dr Sedan, 09–	450 mm	740 mm	17 ³ / ₄ "	29 ¹ / ₈ "



- | | | | |
|--------------|---|------------|---|
| GB/US | Tighten alternately | CZ | Pokreťta bagazníka dokrećaj dokrećaj naprzemiennie. |
| D | Die Schrauben abwechselnd anziehen | SK | Dofahujte striedavo |
| F | Serrer alternativement chaque côté | SLO | Privijajte izmenično. |
| NL | Afwisselend aan de linker- en de rechterkant aandraaien | HR | Naizmjenično zategnite |
| I | Alternare il serraggio delle viti | HU | Egy mástól függetlenül szorítandó |
| E | Apretar alternativamente | GR | Σφιγγετε εναλλάξ |
| PT | Aperte alternadamente | TR | Dönüşümlü sıkın |
| S | Dra åt växelvis | 中文 | 交替拧紧 |
| FIN | Kierrä vuorotellen | 한국어 | 변갈아 가며 조이십시오. |
| EST | Pinguldage vaheldumisi | 日本語 | 交互に締め付けてください。 |
| LAT | Pievēciēt pamāšus | ไทย | ขันในแบบสลับ |
| LIT | Užsukinėkite pakaitomis | | |
| PL | Śruby dokrećaj naprzemiennie | | |
| RU | Затягивайте попеременно | | |

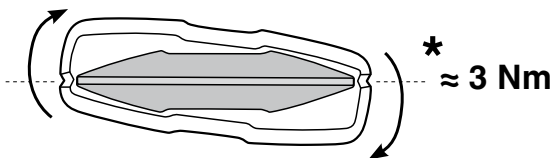
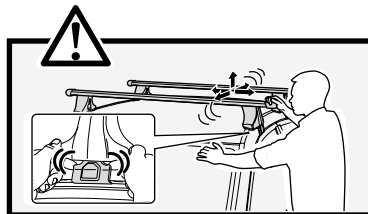
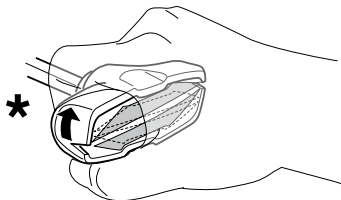
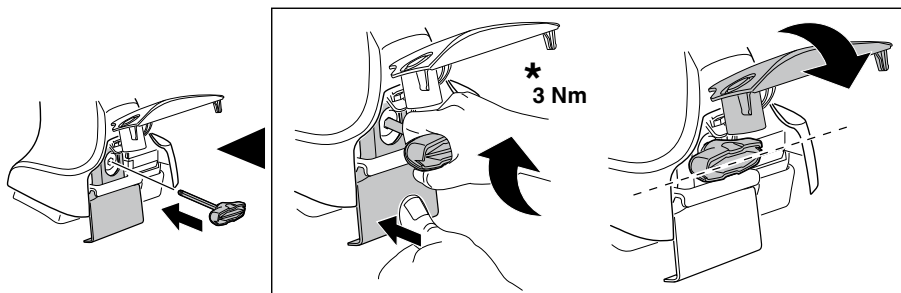
6



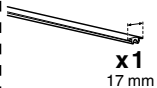
480R/754



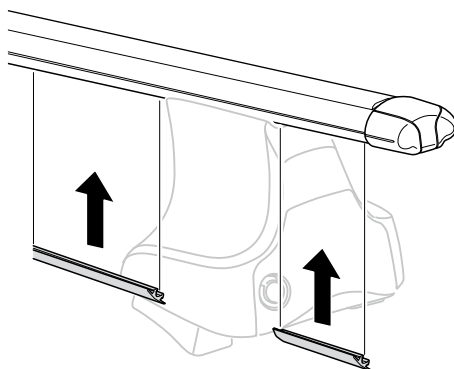
480

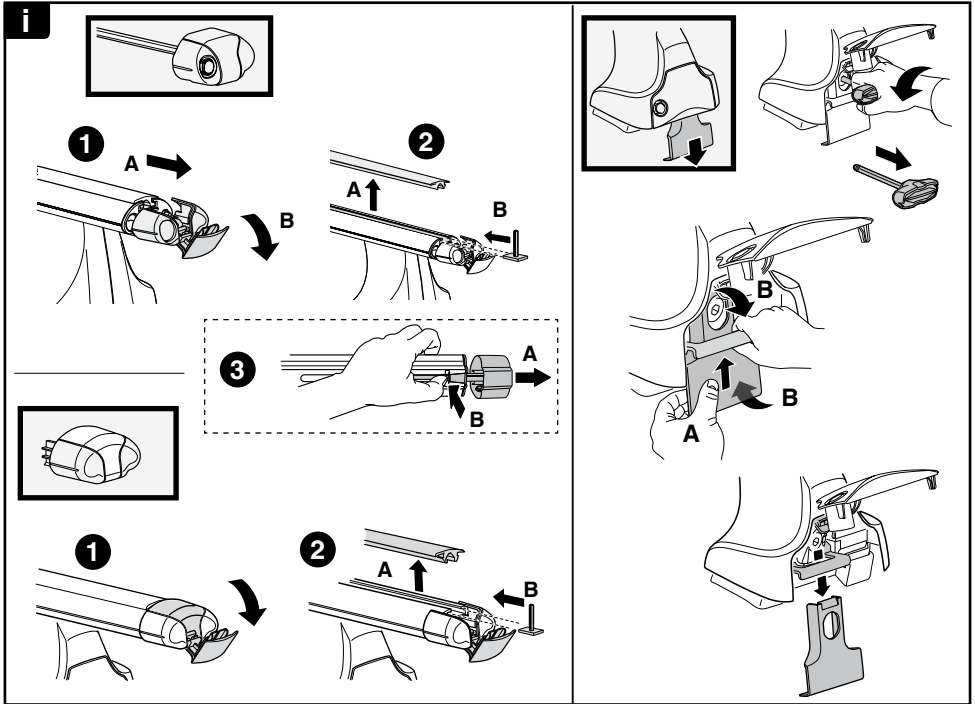
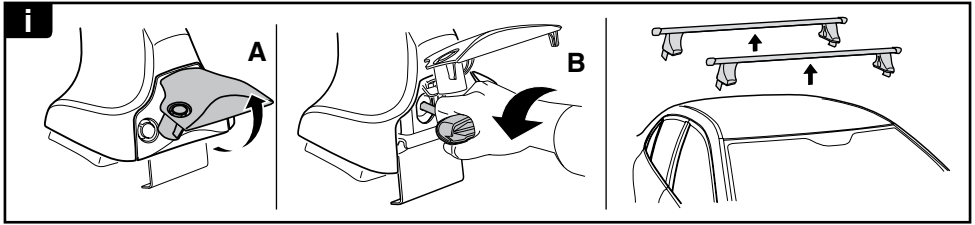


7

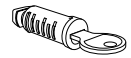
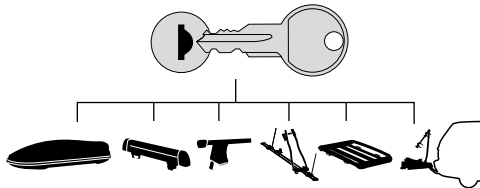


x1
17 mm





THULE
SWEDEN
**ONE
KEY
SYSTEM**



544 (x4)

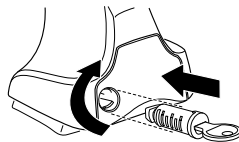
596 (x6)

588 (x8)

NA **510** (x10)

EUR **452** (x12)

ASIA



WW ▶ Thule Sweden AB, Box 69, 330 33 Hillerstorp, SWEDEN
NA ▶ Thule Inc., 42 Silvermine Road, Seymour, Connecticut 06483, USA

info@thule.com
customer.service@thule.com

www.thule.com

503-1594