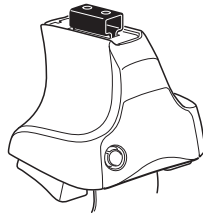
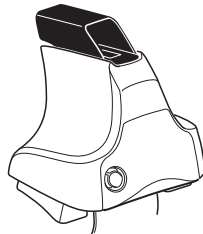
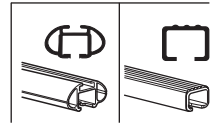


Kit 1725

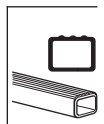
TOYOTA Auris, 5-dr Hatchback, 13–
TOYOTA Corolla, 5-dr Hatchback, 13–



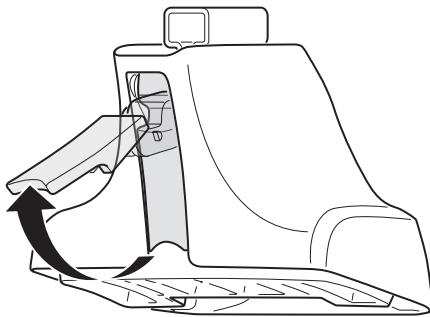
754 Rapid System
480R Rapid Traverse (North America)



480 Traverse (North America)



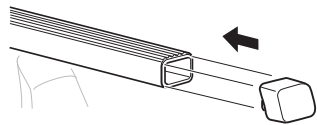
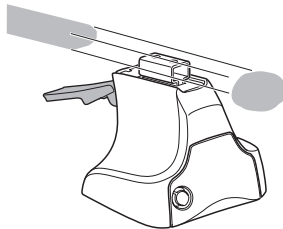
1



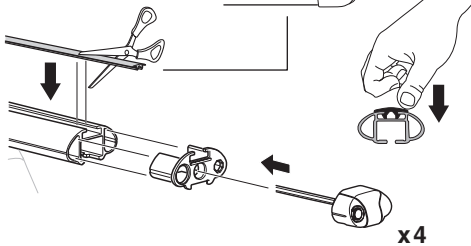
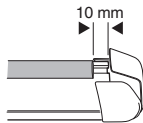
2



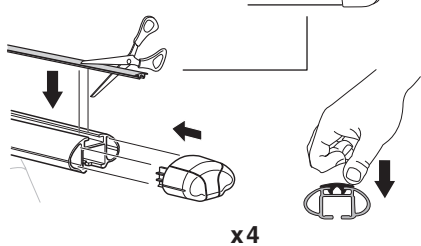
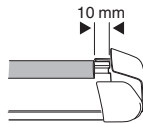
754 Rapid System
480R Rapid Traverse
(North America)



x4



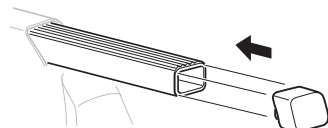
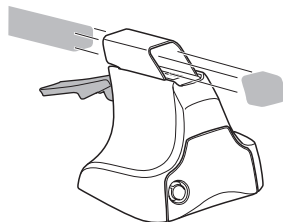
x4



x4

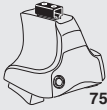


480 Traverse
(North America)

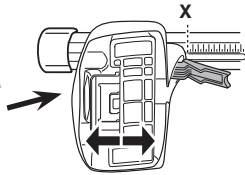


x4

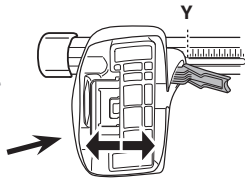
3



754 Rapid System



	X
TOYOTA Auris, 5-dr Hatchback, 13-	28
TOYOTA Corolla, 5-dr Hatchback, 13-	28



	Y
TOYOTA Auris, 5-dr Hatchback, 13-	24,5
TOYOTA Corolla, 5-dr Hatchback, 13-	24,5

3



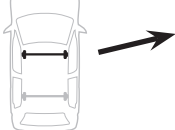
480R Rapid Traverse



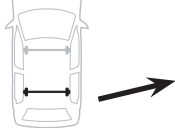
480 Traverse



(North America)

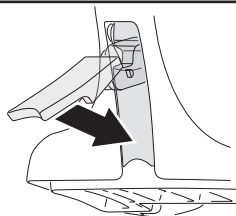


	X inch	X mm
TOYOTA Auris, 5-dr Hatchback, 13-	36 5/8"	931 mm
TOYOTA Corolla, 5-dr Hatchback, 13-	36 5/8"	931 mm



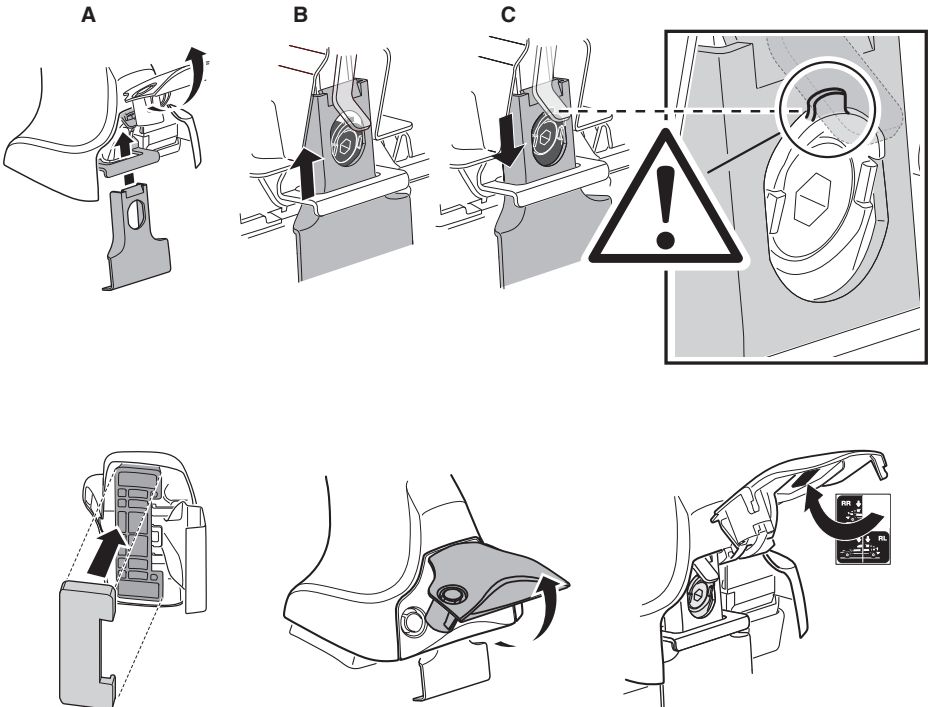
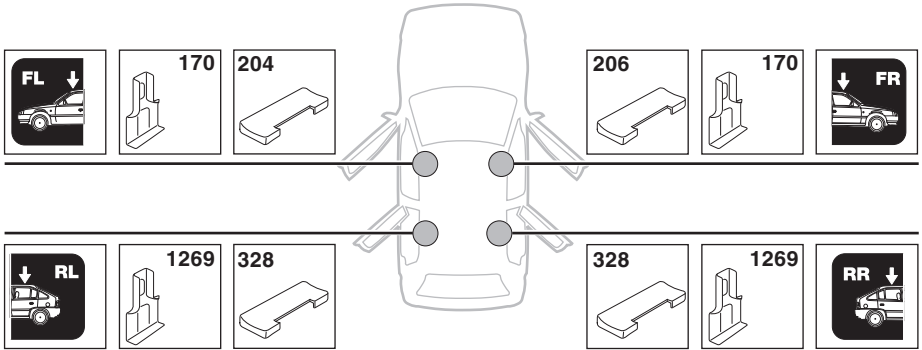
	Y inch	Y mm
TOYOTA Auris, 5-dr Hatchback, 13-	35 1/4"	896 mm
TOYOTA Corolla, 5-dr Hatchback, 13-	35 1/4"	896 mm

4

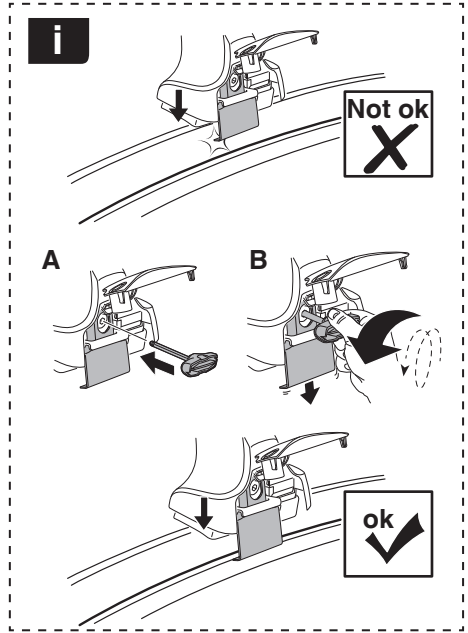
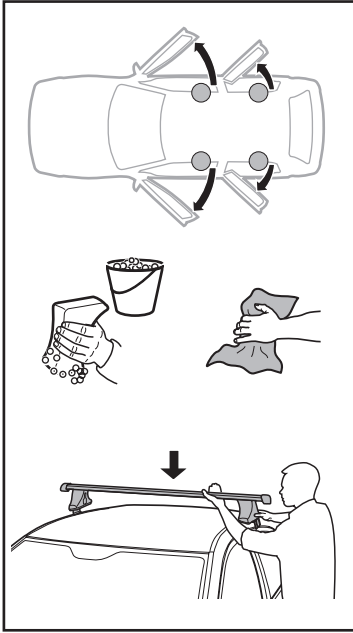


5

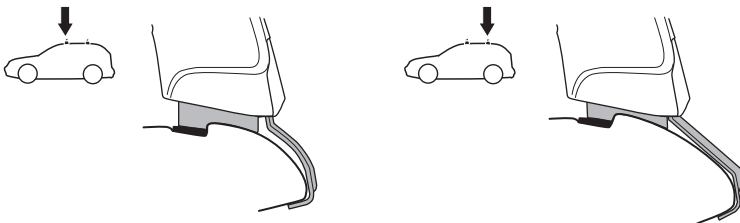
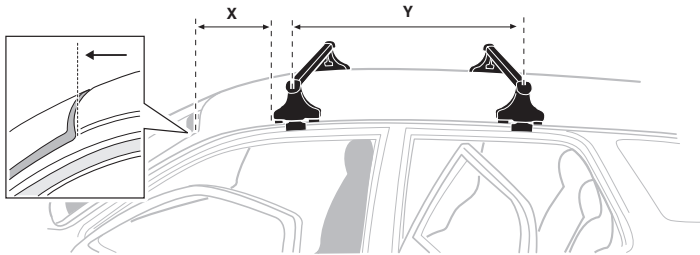
TOYOTA Auris, 5-dr Hatchback, 13-
TOYOTA Corolla, 5-dr Hatchback, 13-



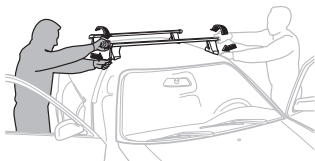
6



	X mm	Y mm	X inch	Y inch
TOYOTA Auris, 5-dr Hatchback, 13-	180 mm	750 mm	7 1/8"	29 1/2"
TOYOTA Corolla, 5-dr Hatchback, 13-	180 mm	750 mm	7 1/8"	29 1/2"



7



GB/US Tighten alternately
D Die Schrauben abwechselnd anziehen
F Serrer alternativement chaque côté
NL Afwisselend aan de linker- en de rechterkant aandraaien
I Alternare il serraggio delle viti
E Apretar alternativamente
PT Aperte alternadamente
S Dra åt växelvis
FIN Kierrä vuorotellen
EST Pinguldage vaheldumisi
LAT Pieļieciet pamišus
LIT Užsukinėkite pakaitomis
PL Śruby dokręcaj naprzemiennie
RU Затягивайте попеременно

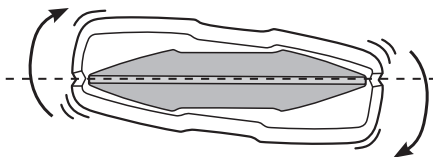
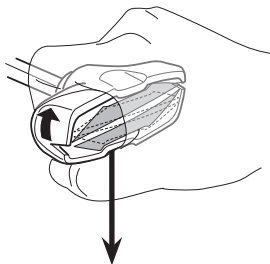
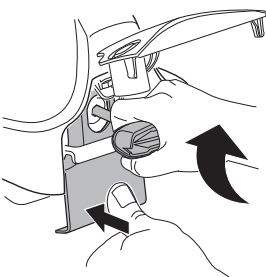
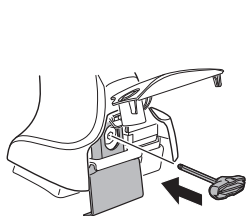
CZ Pokręťta bagażnika dokręcaj naprzemiennie.
SK Dofahajte striedavo
SLO Privijajte izmenično.
HR Naizmjenočno zategnite
HU Egymástól függetlenül szorítandó
GR Σφιγγείτε εναλλάξ
TR Dönüşümlü sıkın

中文 交替拧紧

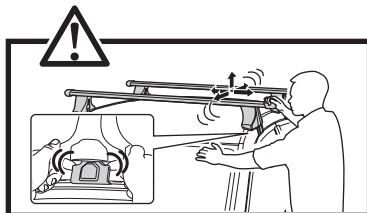
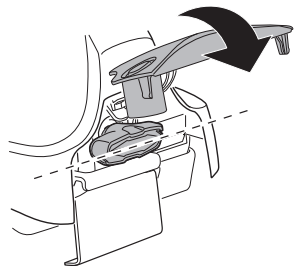
한국어 번갈아 가며 조이십시오.

日本語 交互に締め付けてください。

ไทย ชันในแบบสลับ



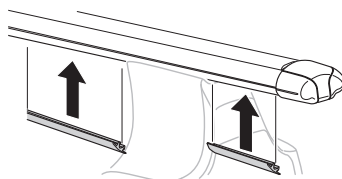
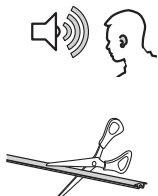
≈ 3 Nm

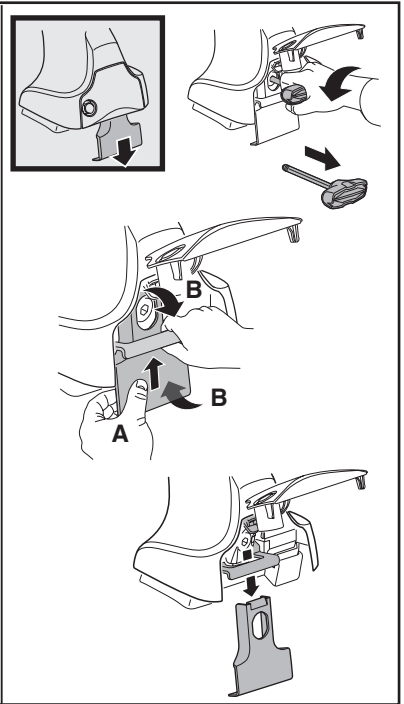
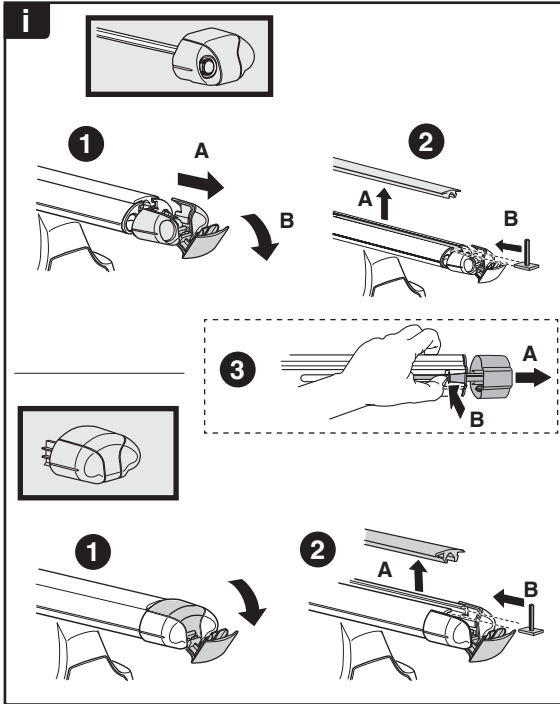
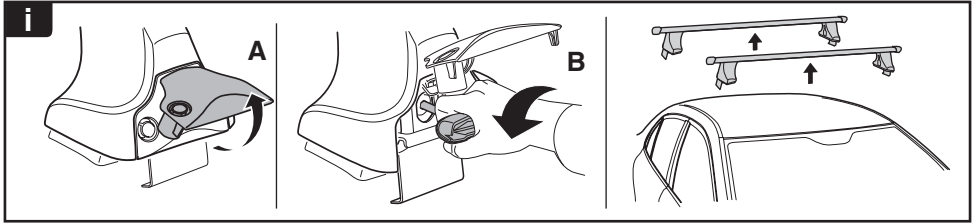


8



x1
17 mm





THULE
SWEDEN
**ONE
KEY
SYSTEM**



		(x4)
		(x6)
		(x8)
NA		(x10)
EUR		(x12)
ASIA		



WW ▶ Thule Sweden AB, Box 69, 330 33 Hillerstorp, SWEDEN
NA ▶ Thule Inc., 42 Silvermine Road, Seymour, Connecticut 06483, USA

info@thule.com
customer.service@thule.com

www.thule.com