

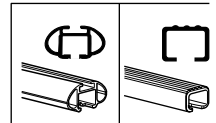
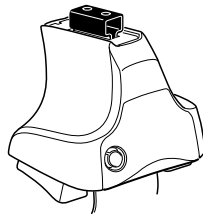
Kit 1589

VOLKSWAGEN Polo (Mk.IV), 3-dr Hatchback, 02-04, 05-09

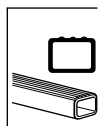
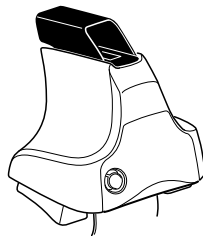
VOLKSWAGEN Polo (Mk.IV), 4-dr Sedan, 02-04, 05-09

VOLKSWAGEN Polo (Mk.IV), 5-dr Hatchback, 02-04, 05-09

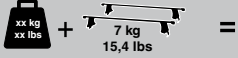
480R
754



480



VOLKSWAGEN Polo (Mk.IV), 3-dr Hatchback,
02-04, 05-09



Max.
65kg/143 lbs

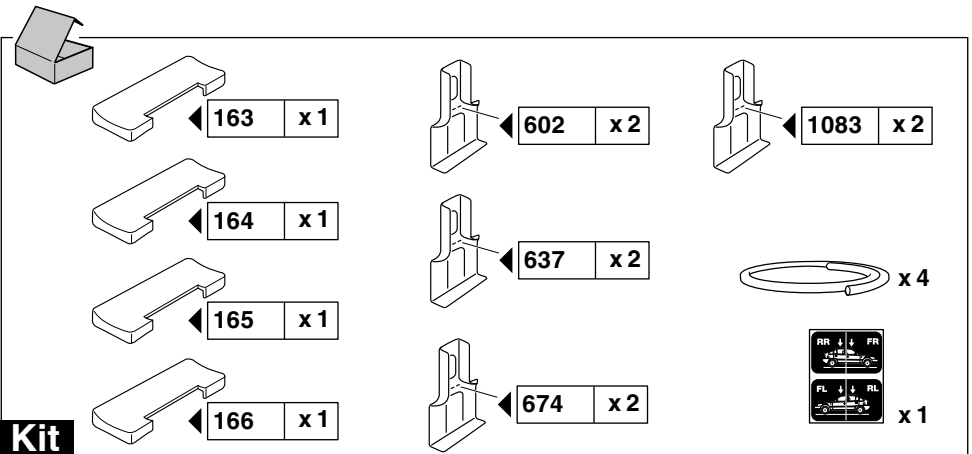
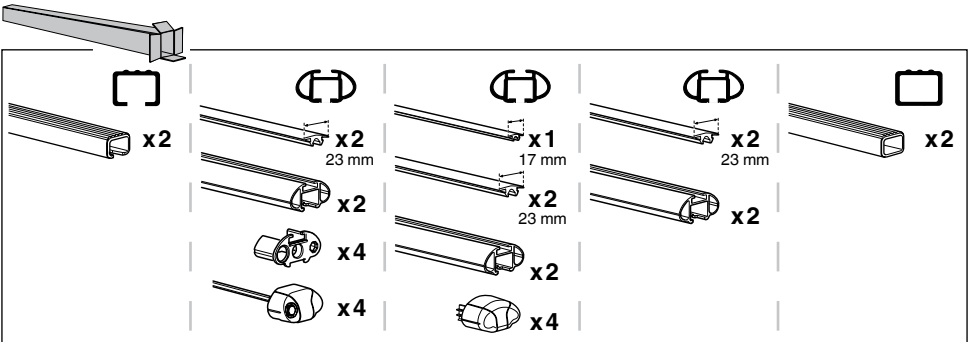
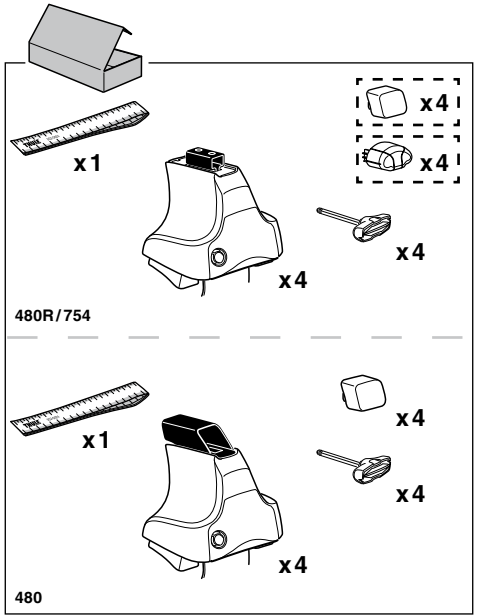
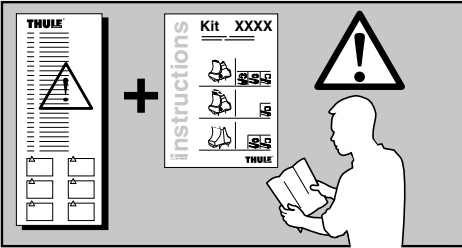
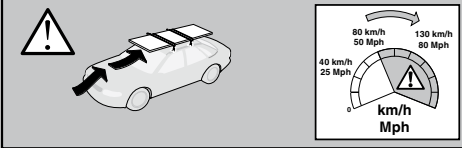
VOLKSWAGEN Polo (Mk.IV), 4-dr Sedan,

02-04, 05-09

VOLKSWAGEN Polo (Mk.IV), 5-dr Hatchback,

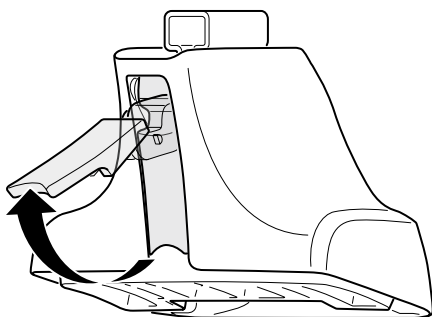
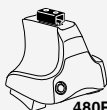
02-04, 05-09

Max.
75kg/165 lbs



Kit

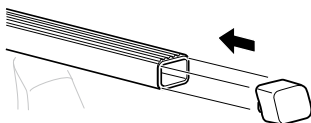
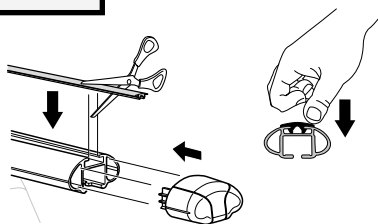
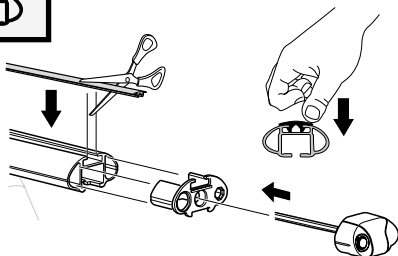
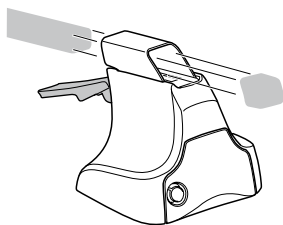
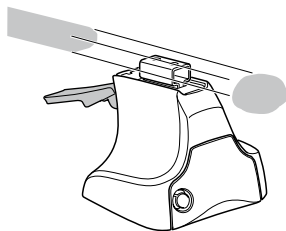
1



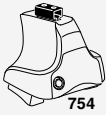
2



+

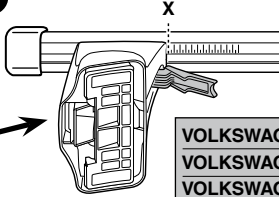
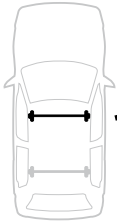


3

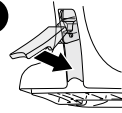


754

1

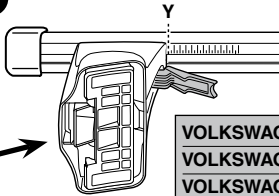
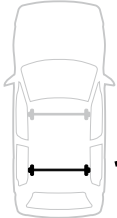


2

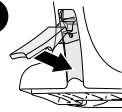


	X
VOLKSWAGEN Polo (Mk.IV), 3-dr Hatchback, 02-04, 05-09	30,5
VOLKSWAGEN Polo (Mk.IV), 4-dr Sedan, 02-04, 05-09	30
VOLKSWAGEN Polo (Mk.IV), 5-dr Hatchback, 02-04, 05-09	30,5

1



2



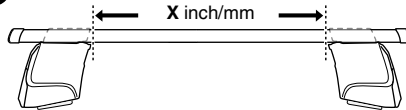
	Y
VOLKSWAGEN Polo (Mk.IV), 3-dr Hatchback, 02-04, 05-09	27
VOLKSWAGEN Polo (Mk.IV), 4-dr Sedan, 02-04, 05-09	28
VOLKSWAGEN Polo (Mk.IV), 5-dr Hatchback, 02-04, 05-09	27



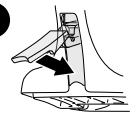
480R

480

1

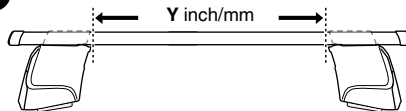


2

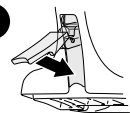


	X inch	X mm
VOLKSWAGEN Polo (Mk.IV), 3-dr Hatchback, 02-04, 05-09	37 5/8"	956 mm
VOLKSWAGEN Polo (Mk.IV), 4-dr Sedan, 02-04, 05-09	37 1/2"	951 mm
VOLKSWAGEN Polo (Mk.IV), 5-dr Hatchback, 02-04, 05-09	37 5/8"	956 mm

1

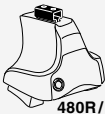


2



	Y inch	Y mm
VOLKSWAGEN Polo (Mk.IV), 3-dr Hatchback, 02-04, 05-09	36 1/4"	921 mm
VOLKSWAGEN Polo (Mk.IV), 4-dr Sedan, 02-04, 05-09	36 5/8"	931 mm
VOLKSWAGEN Polo (Mk.IV), 5-dr Hatchback, 02-04, 05-09	36 1/4"	921 mm

4



480R/754



480

VOLKSWAGEN Polo (Mk.IV), 3-dr Hatchback, 02-04, 05-09



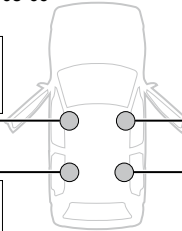
166



602



FL



165



602



FR



163



637



RL



164



637



RR



VOLKSWAGEN Polo (Mk.IV), 4-dr Sedan, 02-04, 05-09



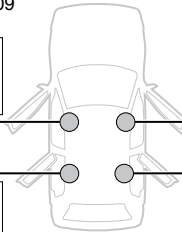
166



602



FL



165



602



FR



163



674



RL



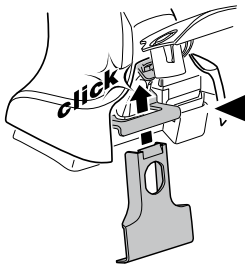
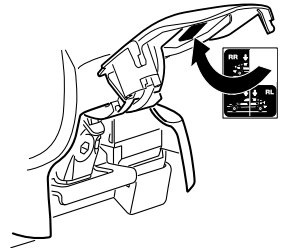
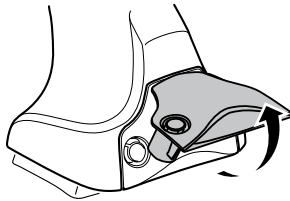
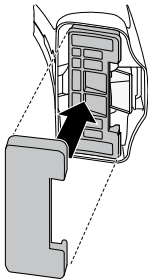
164



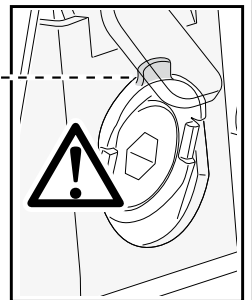
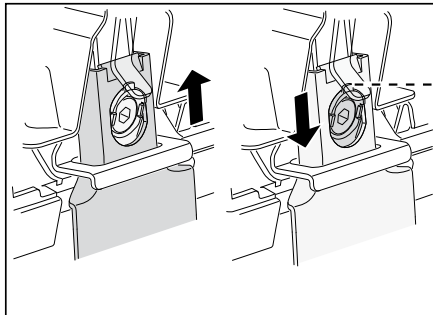
674



RR

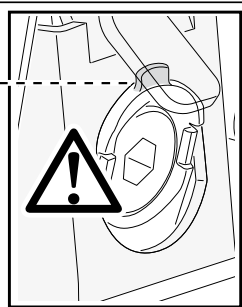
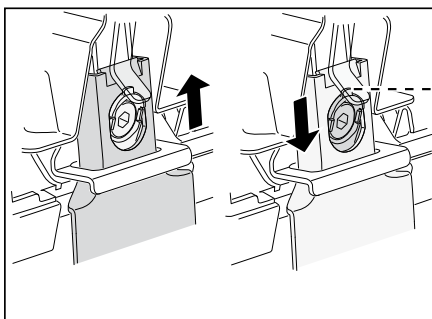
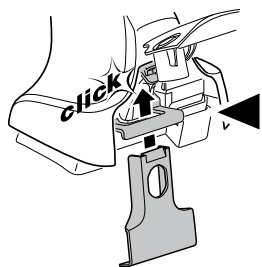
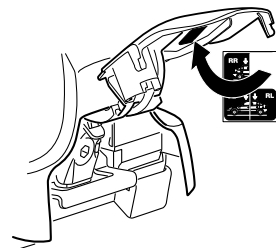
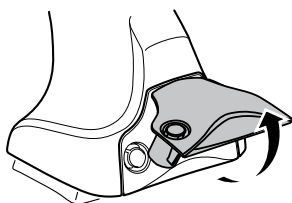
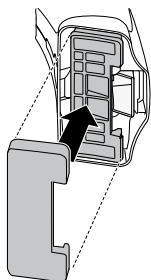
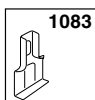
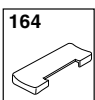
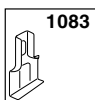
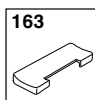
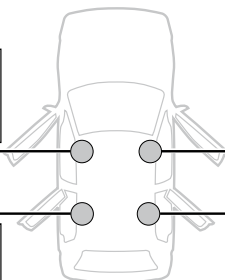


click

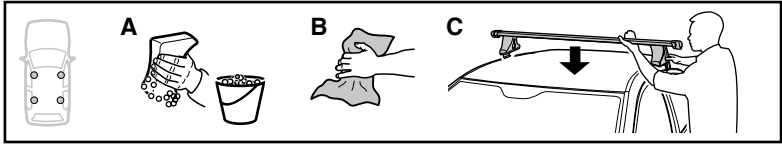


4

VOLKSWAGEN Polo (Mk.IV), 5-dr Hatchback, 02-04, 05-09

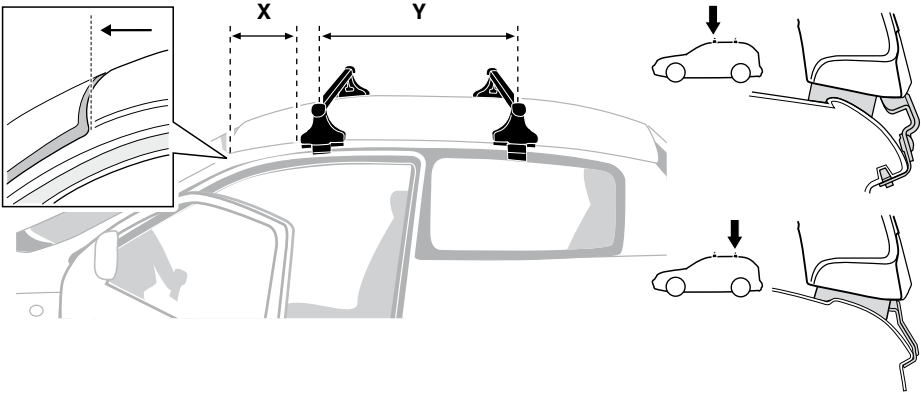
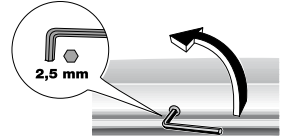


5

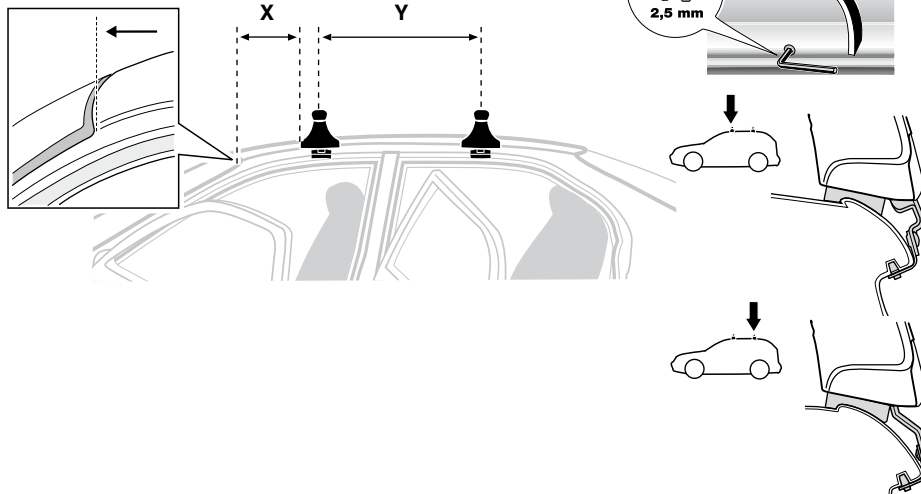
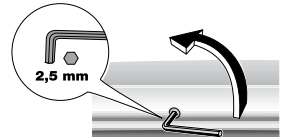


	X mm	Y mm	X inch	Y inch
VOLKSWAGEN Polo (Mk.IV), 3-dr Hatchback, 02-04, 05-09	250 mm	755 mm	9 7/8"	29 3/4"
VOLKSWAGEN Polo (Mk.IV), 4-dr Sedan, 02-04, 05-09	245 mm	790 mm	9 5/8"	31 1/8"

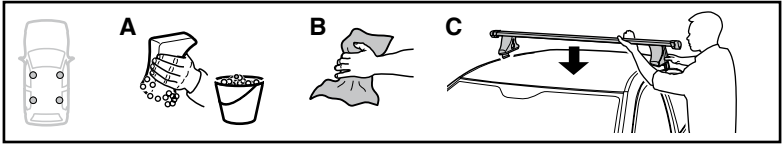
VOLKSWAGEN Polo (Mk.IV), 3-dr Hatchback, 02-04, 05-09



VOLKSWAGEN Polo (Mk.IV), 4-dr Sedan, 02-04, 05-09

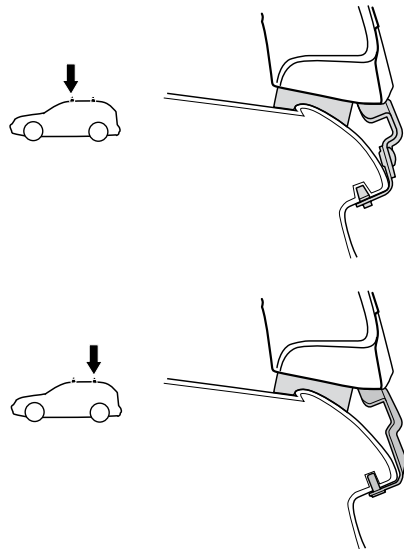
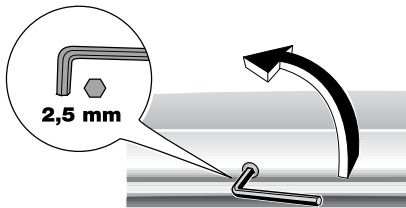
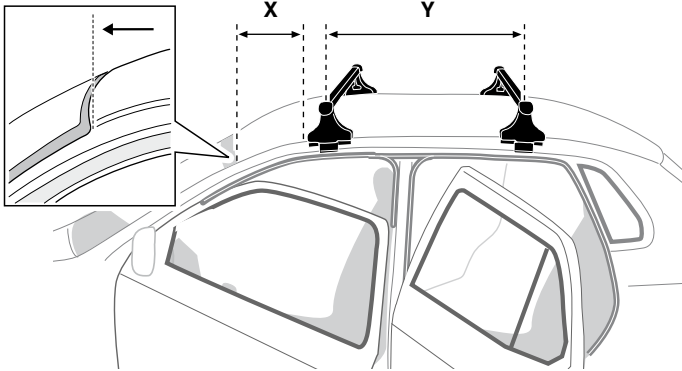


5

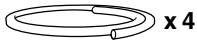


	X mm	Y mm	X inch	Y inch
VOLKSWAGEN Polo (Mk.IV), 5-dr Hatchback, 02-04, 05-09	245 mm	780 mm	9 ⁵/₈ "	30 ³/₄ "

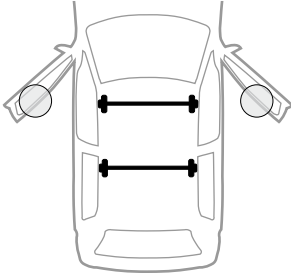
VOLKSWAGEN Polo (Mk.IV), 5-dr Hatchback, 02-04, 05-09



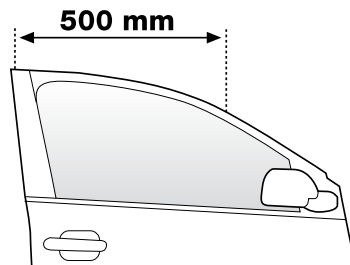
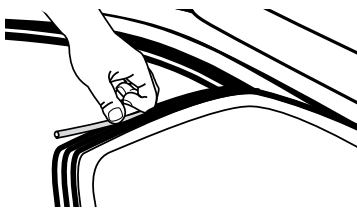
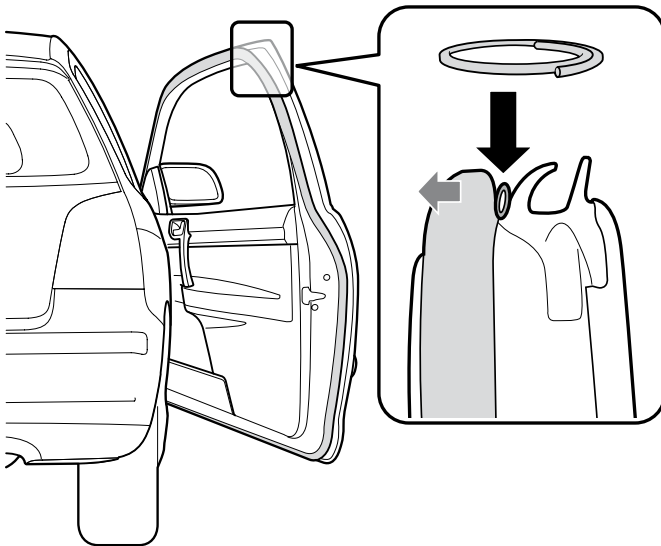
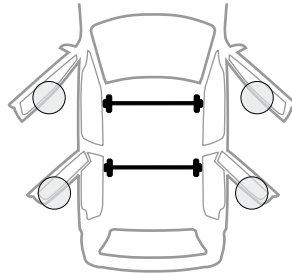
6



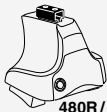
VOLKSWAGEN Polo (Mk.IV),
3-dr Hatchback, 02-04, 05-09



VOLKSWAGEN Polo (Mk.IV),
4-dr Sedan, 02-04, 05-09
VOLKSWAGEN Polo (Mk.IV),
5-dr Hatchback, 02-04, 05-09



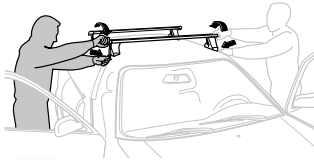
7



480R / 754



480



GB/US Tighten alternately

D Die Schrauben abwechselnd anziehen

F Serrer alternativement chaque côté

NL Afwisselend aan de linker- en de rechterkant aandraaien

I Alternare il serraggio delle viti

E Apretar alternativamente

PT Aperte alternadamente

S Dra åt växelvis

FIN Kierrä vuorotellen

EST Pinguldage vaheldumisi

LAT Pievelciēt pamišus

LIT Užsukinėkite pakaitomis

PL Śruby dokręcaj naprzemiennie

RU Затягивайте попеременно

CZ Pokręťta bagażníka dokřećaj dokřećaj naprzemiennie.

SK Dofahajte striedavo

SLO Privijajte izmenično.

HR Naizmjenično zategnite

HU Egymástól függetlenül szorítandó

GR Σφιγγετε εναλλάξ

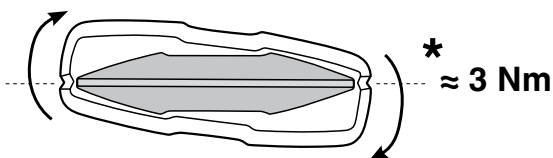
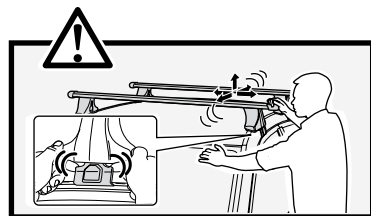
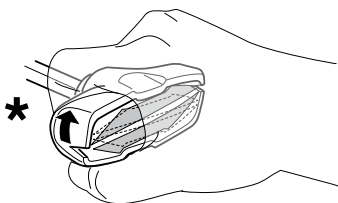
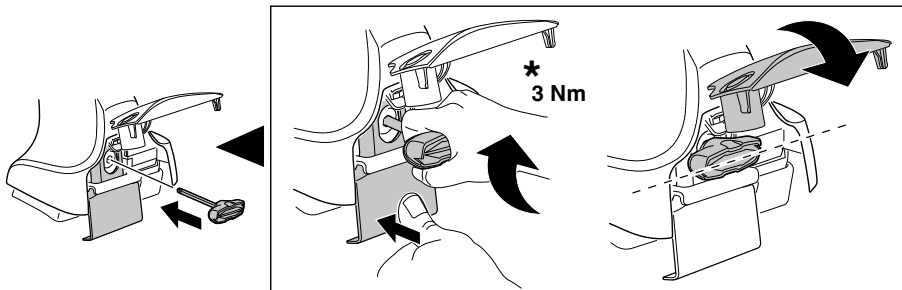
TR Dönüşümlü sıkın

中文 交替拧紧

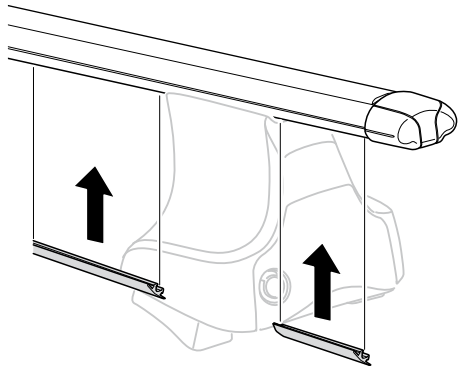
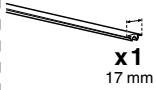
한국어 번갈아 가며 조이십시오.

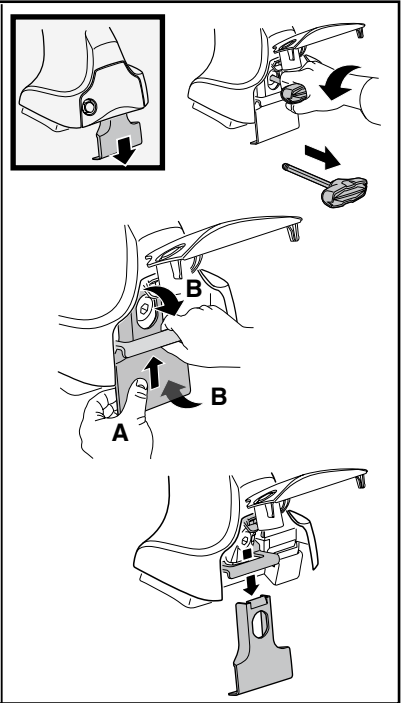
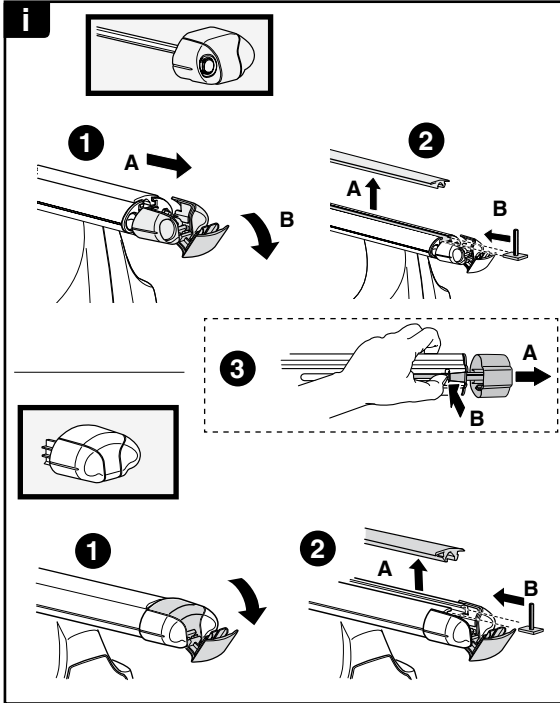
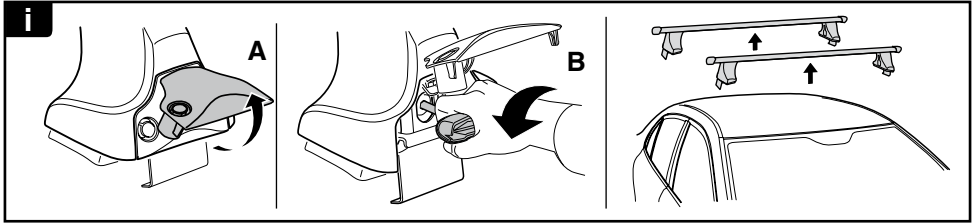
日本語 交互に締め付けてください。

ไทย ชันในแบบสลับ

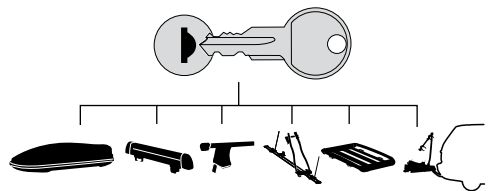


8

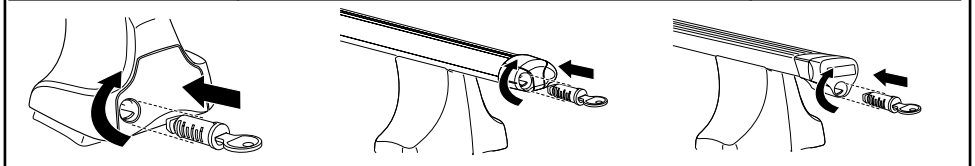




THULE
SWEDEN
**ONE
KEY
SYSTEM**



- 544 (x4)
- 596 (x6)
- 588 (x8)
- NA 510 (x10)
- EUR 452 (x12)
- ASIA



WW ▶ Thule Sweden AB, Box 69, 330 33 Hillerstorp, SWEDEN
NA ▶ Thule Inc., 42 Silvermine Road, Seymour, Connecticut 06483, USA

info@thule.com
customer.service@thule.com

www.thule.com