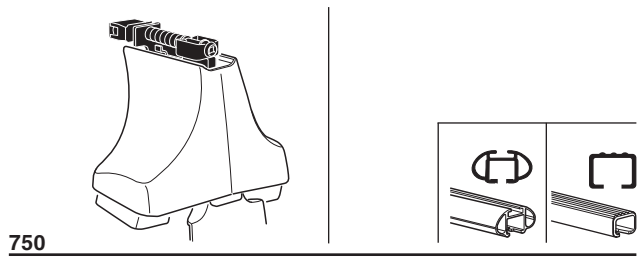
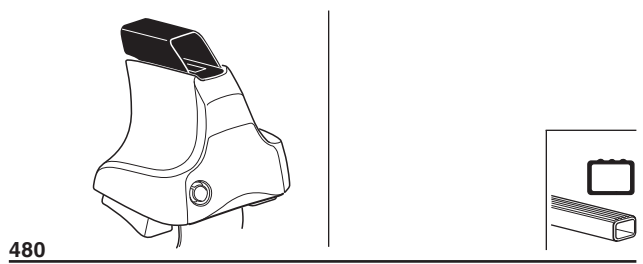
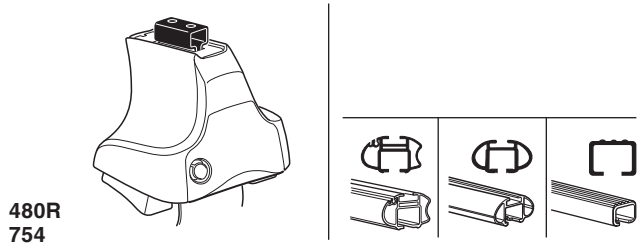
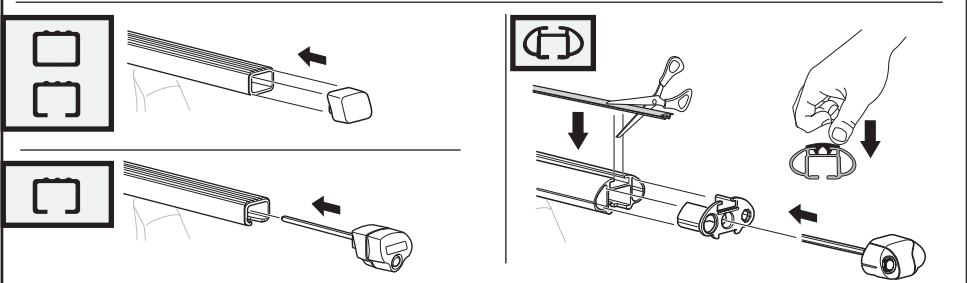
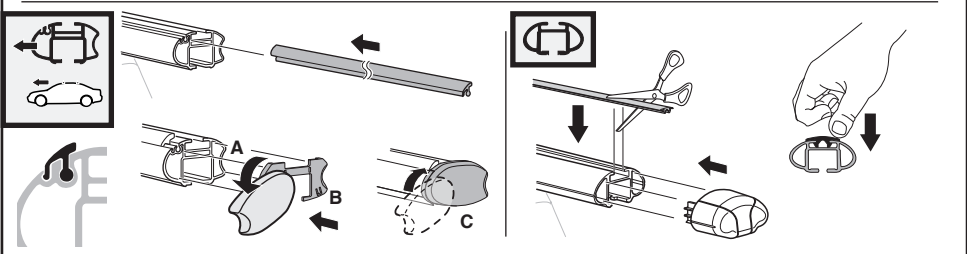
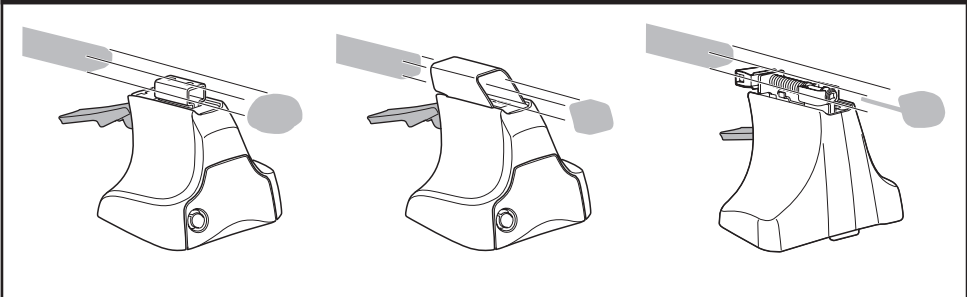
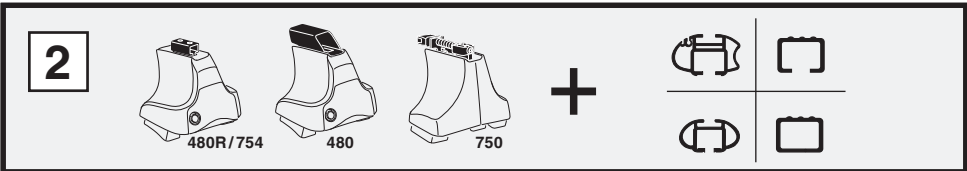
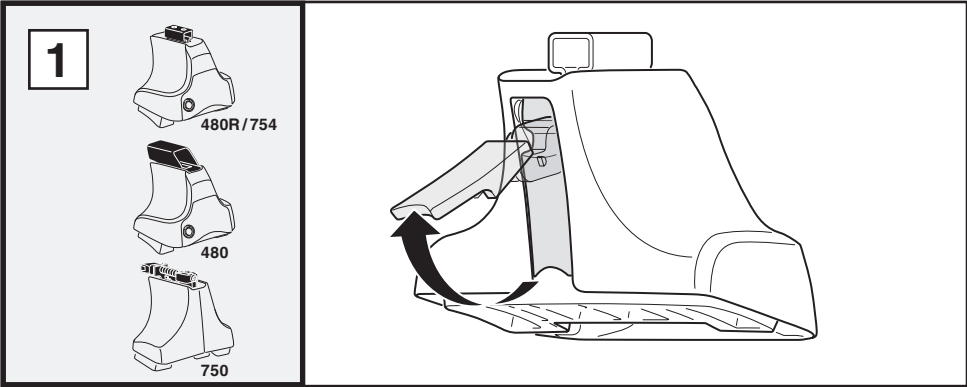


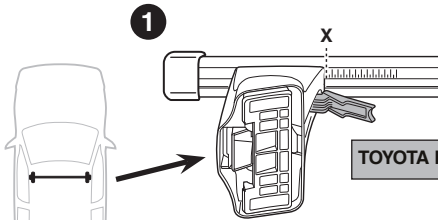
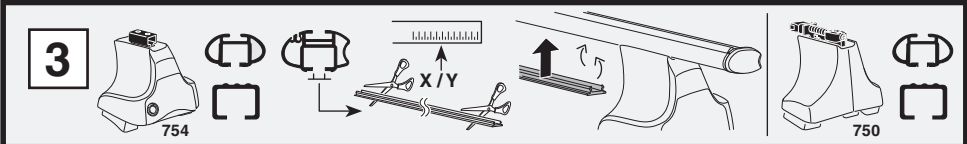
# Kit 1345

TOYOTA Prius, 5-dr Hatchback, 04-08

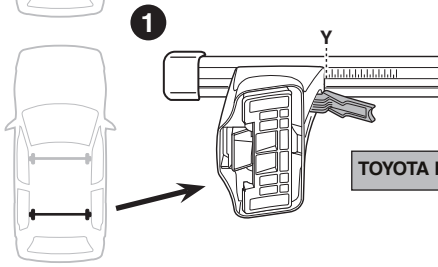
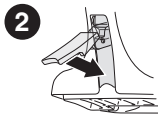


**Kit**

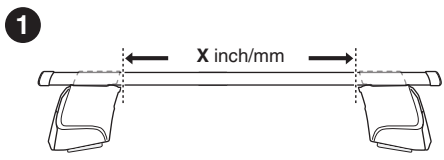
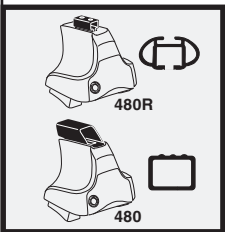




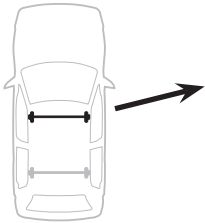
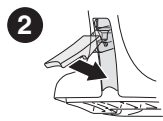
	X
TOYOTA Prius, 5-dr Hatchback, 04-08	40



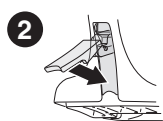
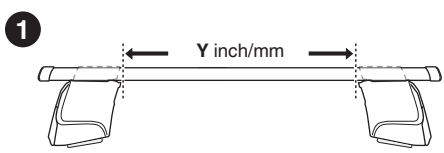
	Y
TOYOTA Prius, 5-dr Hatchback, 04-08	38



	X inch	X mm
TOYOTA Prius, 5-dr Hatchback, 04-08	41 <sup>3</sup> / <sub>8</sub> "	1051 mm



	Y inch	Y mm
TOYOTA Prius, 5-dr Hatchback, 04-08	40 <sup>5</sup> / <sub>8</sub> "	1031 mm



# 4

TOYOTA Prius, 5-dr Hatchback, 04-08

164



727



FL



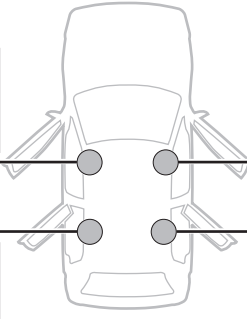
163



727



FR



163



727



RL



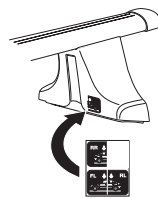
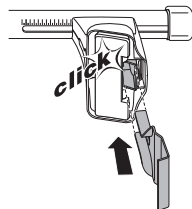
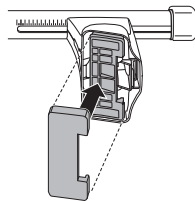
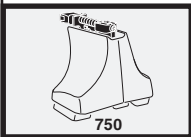
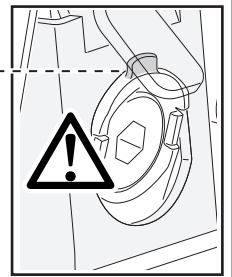
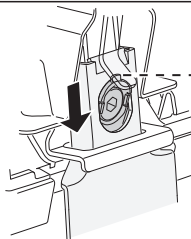
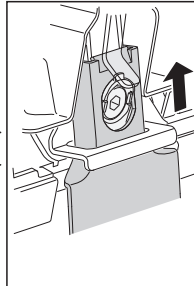
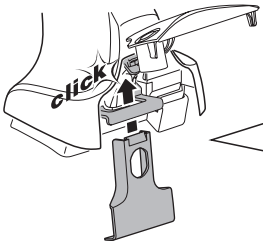
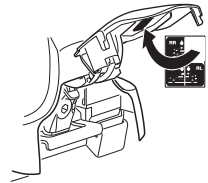
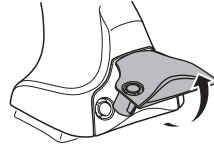
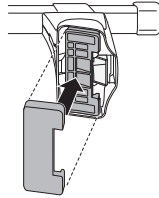
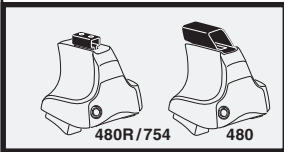
164



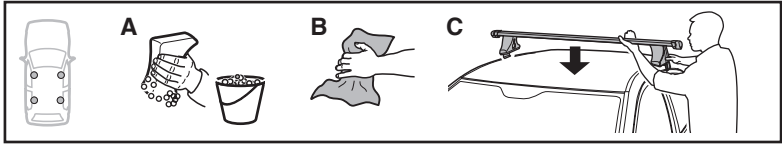
727



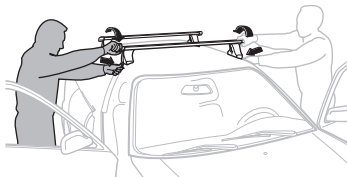
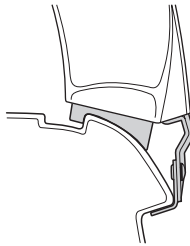
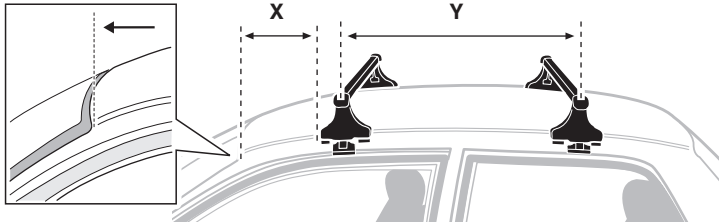
RR



5



	X mm	Y mm	X inch	Y inch
TOYOTA Prius, 5-dr Hatchback, 04-08	320 mm	600 mm	12 5/8"	23 5/8"



**GB/US** Tighten alternately

**D** Die Schrauben abwechselnd anziehen

**F** Serrer alternativement chaque côté

**NL** Afwisselend aan de linker- en de rechterkant aandraaien

**I** Alternare il serraggio delle viti

**E** Serrare alternativamente

**PT** Aperte alternadamente

**S** Dra åt växelvis

**FIN** Kierrä vuorotellen

**EST** Pinguldage vaheldumisi

**LAT** Pieveļciet pamišus

**LIT** Užsukinėkite pakaitomis

**PL** Śruby dokręcaj naprzemiennie

**RU** Затягивайте попеременно

**CZ** Pokręťta bagażníka dokręcaj dokręcaj naprzemiennie.

**SK** Doťahujte striedavo

**SLO** Privijajte izmenično.

**HR** Naizmjenično zategnite

**HU** Egymástól függetlenül szorítandó

**GR** Σφιγγετε εναλλάξ

**TR** Dönüşümlü sıkın

**中文** 交替拧紧

**한국어** 번갈아 가며 조이십시오.

**日本語** 交互に締め付けてください。

**ไทย** ชันโนแบบสลับ

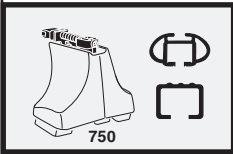
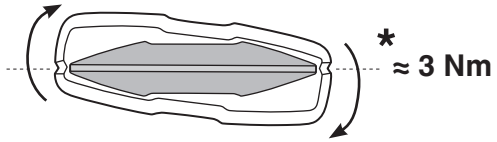
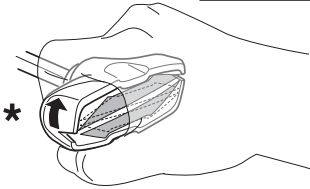
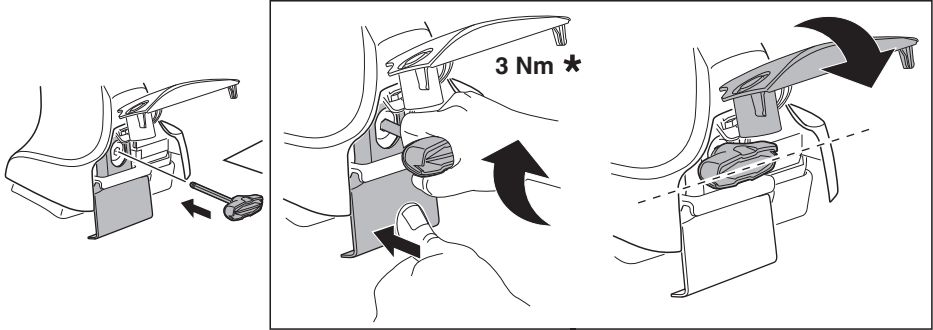
6



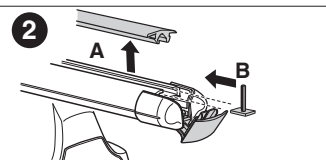
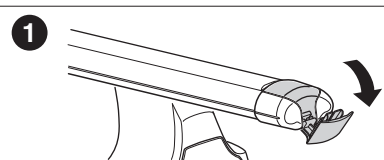
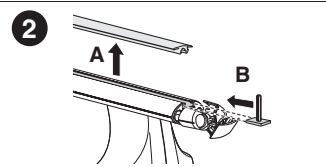
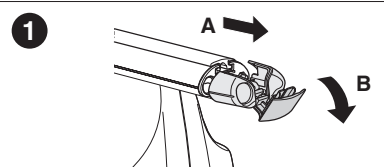
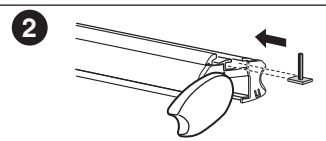
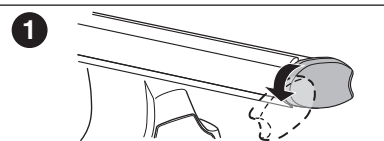
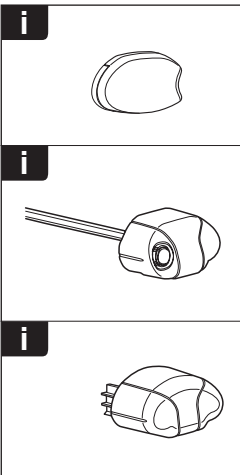
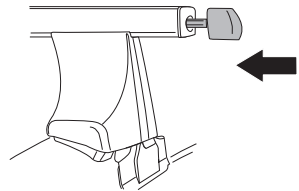
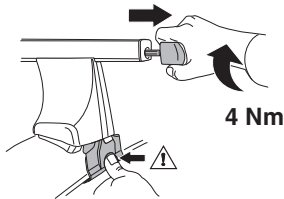
480R/754

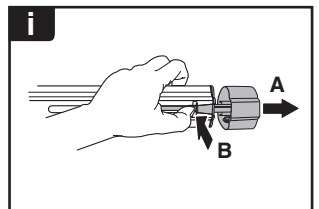
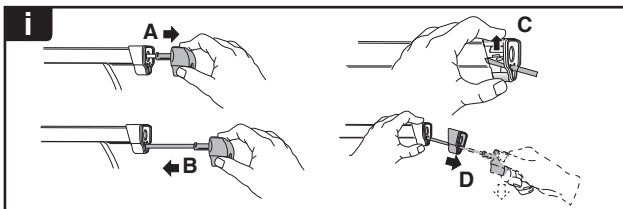
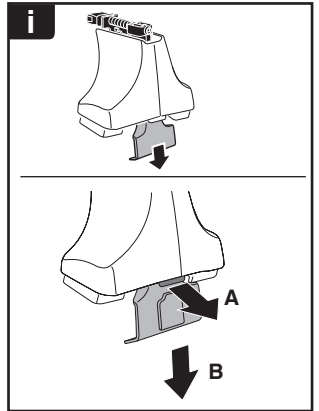
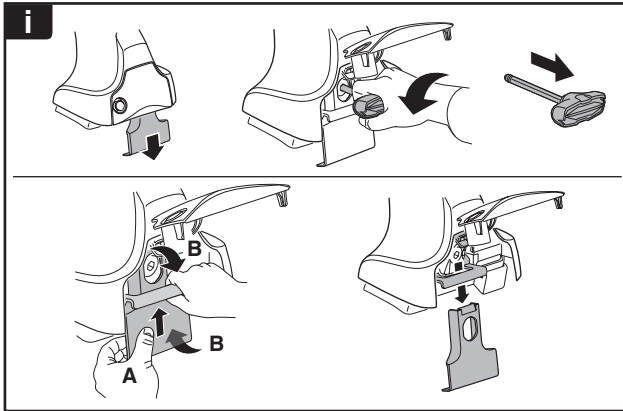
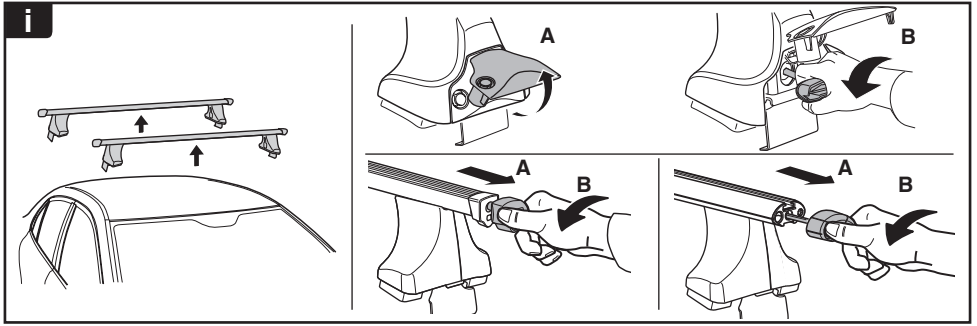


480

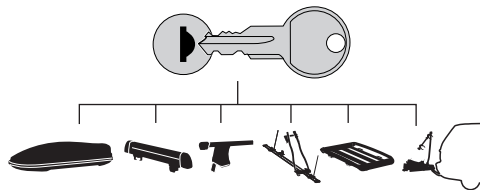


750

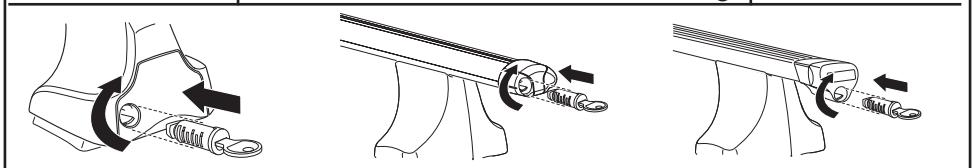




**THULE**  
SWEDEN  
**ONE  
KEY  
SYSTEM**



- 544 (x4)
- 596 (x6)
- 588 (x8)
- NA 510 (x10)
- EUR 452 (x12)
- ASIA



WW ▶ Thule Sweden AB, Box 69, 330 33 Hillerstorp, SWEDEN  
NA ▶ Thule Inc., 42 Silvermine Road, Seymour, Connecticut 06483, USA

info@thule.com  
customer.service@thule.com

www.thule.com