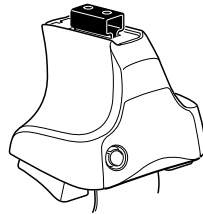
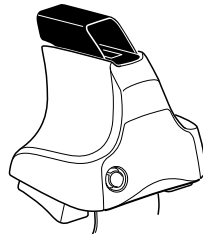


Kit 1687

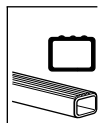
PEUGEOT 208, 3-dr Hatchback, 12-
PEUGEOT 208, 5-dr Hatchback, 12-



754 Rapid System
480R Rapid Traverse (North America)



480 Traverse (North America)



754 Rapid System
480R Rapid Traverse (North America)

754 Rapid System
480R Rapid Traverse (North America)

480 Traverse (North America)

(North America)

815 x 2
816 x 2
1074 x 2
124 x 2
151 x 1
153 x 1
FR FL FR RL x 1

1



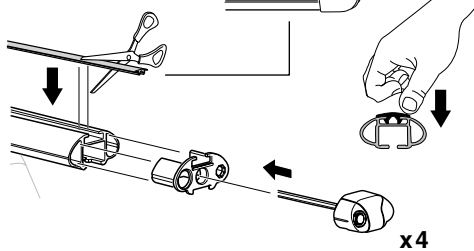
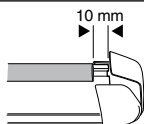
2



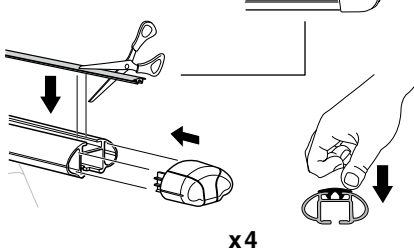
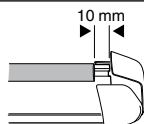
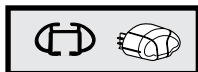
754 Rapid System
480R Rapid Traverse
(North America)



x4



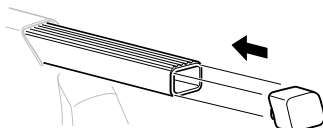
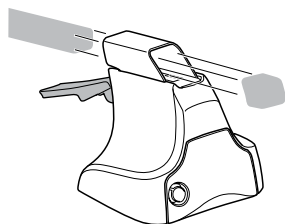
x4



x4



480 Traverse
(North America)

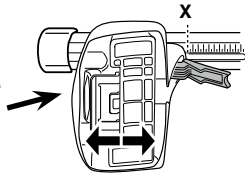


x4

3

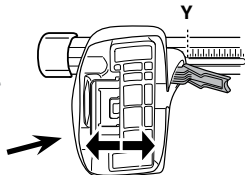


754 Rapid System



X

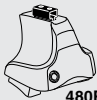
PEUGEOT 208, 3-dr Hatchback, 12-	34
PEUGEOT 208, 5-dr Hatchback, 12-	34



Y

PEUGEOT 208, 3-dr Hatchback, 12-	32
PEUGEOT 208, 5-dr Hatchback, 12-	32

3

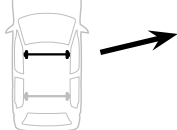


480R Rapid Traverse



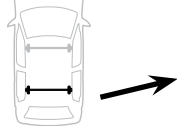
480 Traverse

(North America)



X inch X mm

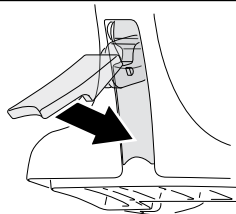
PEUGEOT 208, 3-dr Hatchback, 12-	39"	991 mm
PEUGEOT 208, 5-dr Hatchback, 12-	39"	991 mm

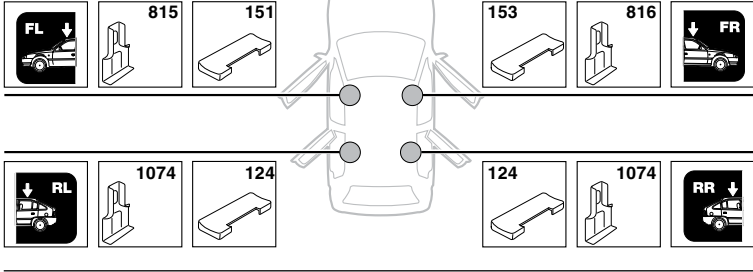
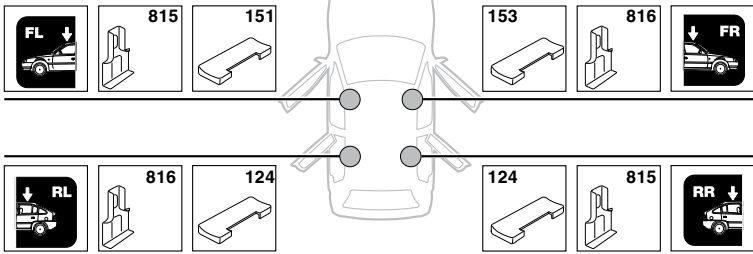
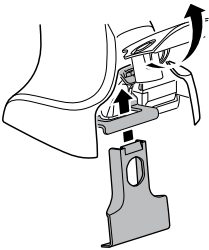
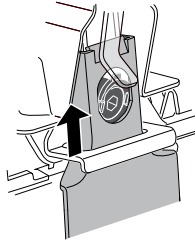
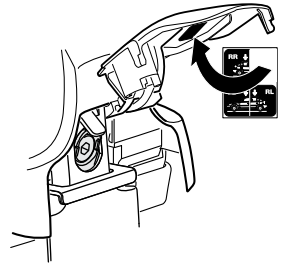
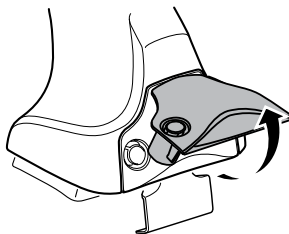
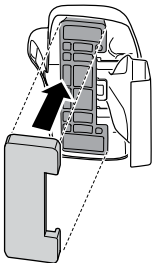
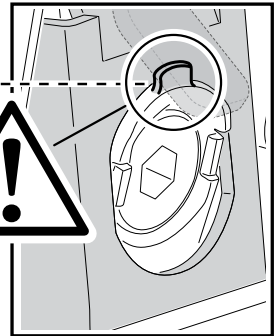
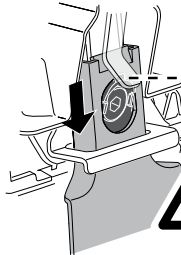


Y inch Y mm

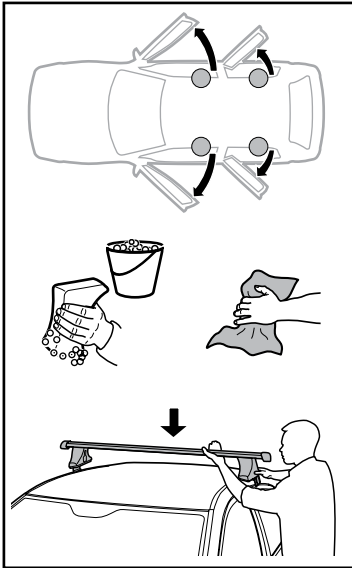
PEUGEOT 208, 3-dr Hatchback, 12-	38 1/4"	971 mm
PEUGEOT 208, 5-dr Hatchback, 12-	38 1/4"	971 mm

4

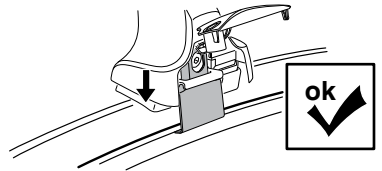
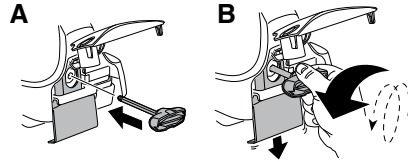
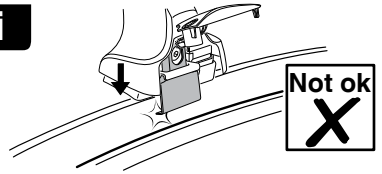


5**PEUGEOT 208, 3-dr Hatchback, 12-****PEUGEOT 208, 5-dr Hatchback, 12-****A****B****C**

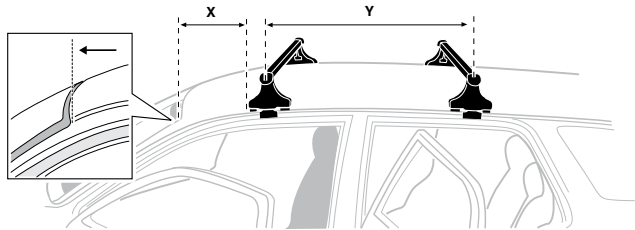
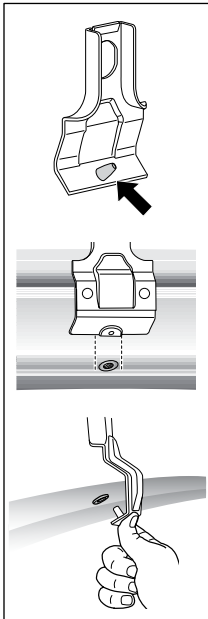
6



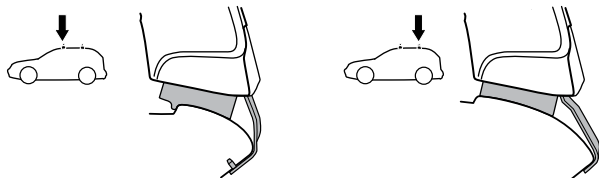
i



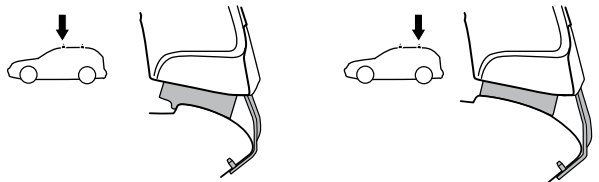
	X mm	Y mm	X inch	Y inch
PEUGEOT 208, 3-dr Hatchback, 12-	265 mm	670 mm	10 ³ / ₈ "	26 ³ / ₈ "
PEUGEOT 208, 5-dr Hatchback, 12-	265 mm	710 mm	10 ³ / ₈ "	28 "

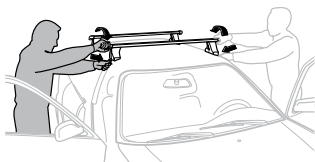


PEUGEOT 208, 3-dr Hatchback, 12-



PEUGEOT 208, 5-dr Hatchback, 12-



7

GB/US Tighten alternately
D Die Schrauben abwechselnd anziehen
F Serrer alternativement chaque côté
NL Afwisselend aan de linker- en de rechterkant aandraaien
I Alternare il serraggio delle viti
E Apertar alternativamente
PT Aperte alternadamente
S Dra åt växelvis
FIN Kierrä vuorotellen
EST Pinguldage vaheldumisi
LAT Pievelciēt pamiēšus
LIT Užsukinėkite pakaitomis
PL Śruby dokręcaj naprzemiennie
RU Затягивайте попеременно

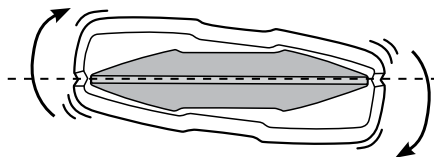
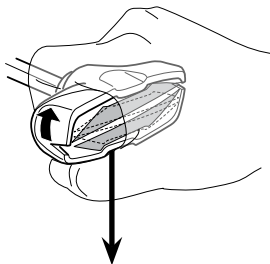
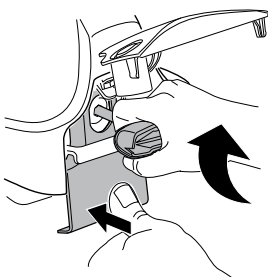
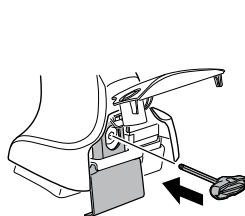
CZ Pokręťta bagażnika dokręcaj naprzemiennie.
SK Dofahajte striedavo
SLO Privijajte izmenično.
HR Naizmjenočno zategnite
HU Egymástól függetlenül szorítandó
GR Σφιγίγτες εναλλάξ
TR Dönüşümlü sıkın

中文 交替拧紧

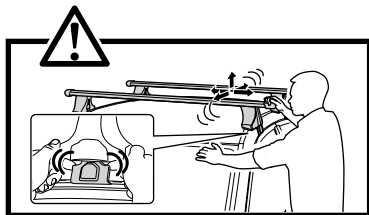
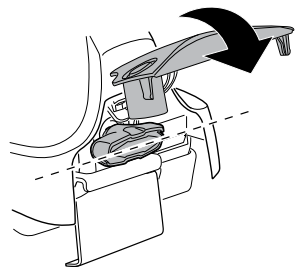
한국어 번갈아 가며 조이십시오.

日本語 交互に締め付けてください。

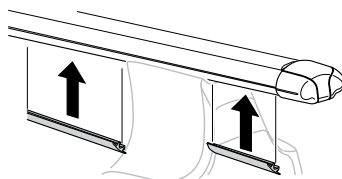
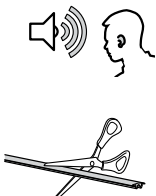
ไทย ชันในแบบสลับ



≈ 3 Nm

**8**

x1
17 mm





THULE
SWEDEN
**ONE
KEY
SYSTEM**



		(x4)
		(x6)
		(x8)
NA		(x10)
EUR		(x12)
ASIA		



WW ▶ Thule Sweden AB, Box 69, 330 33 Hillerstorp, SWEDEN
NA ▶ Thule Inc., 42 Silvermine Road, Seymour, Connecticut 06483, USA

info@thule.com
customer.service@thule.com

www.thule.com