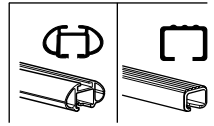


# Kit 1644

PEUGEOT 508, 4-dr Sedan, 11-



**754** Rapid System  
**480R** Rapid Traverse (North America)



**480** Traverse (North America)



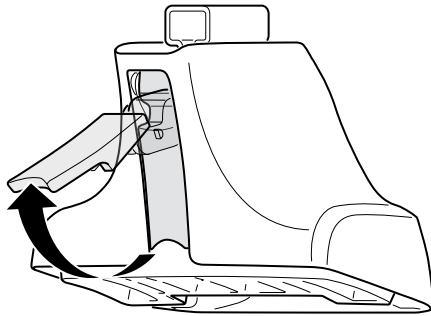
754 Rapid System  
480R Rapid Traverse (North America)

480 Traverse (North America)

<p>Component 1: <b>x2</b></p> <p>Component 2: <b>x2</b> (23 mm)</p> <p>Component 3: <b>x2</b></p> <p>Component 4: <b>x4</b></p> <p>Component 5: <b>x4</b></p>	<p>Component 6: <b>x1</b> (17 mm)</p> <p>Component 7: <b>x2</b> (23 mm)</p> <p>Component 8: <b>x2</b></p> <p>Component 9: <b>x4</b></p>	<p>(North America)</p> <p>Component 10: <b>x2</b> (23 mm)</p> <p>Component 11: <b>x2</b></p>
---	---	--

**1162 x4**  
**191 x2**  
**192 x2**  
**x1** (Directional Pad)

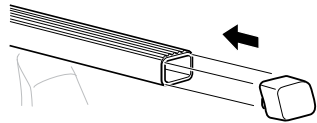
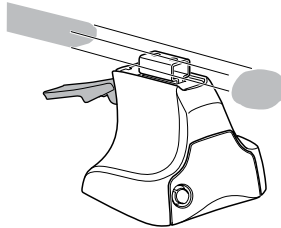
1



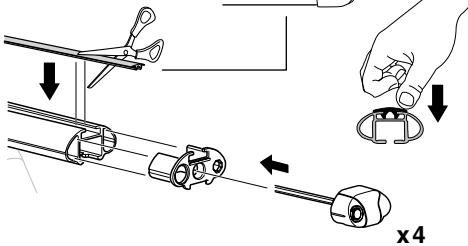
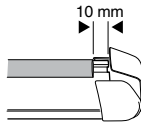
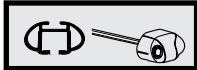
2



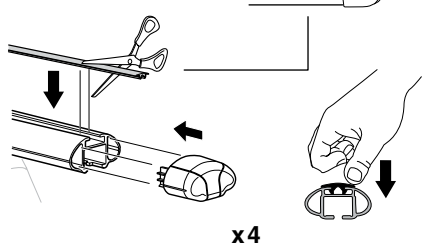
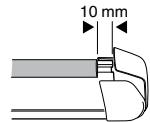
754 Rapid System  
480R Rapid Traverse  
(North America)



x4



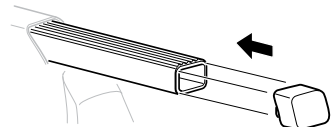
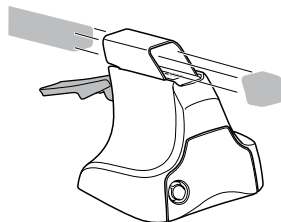
x4



x4



480 Traverse  
(North America)

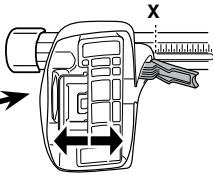


x4

**3**



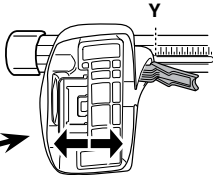
**754** Rapid System



PEUGEOT 508, 4-dr Sedan, 11-

**X**

**39,5**



PEUGEOT 508, 4-dr Sedan, 11-

**Y**

**37**

**3**

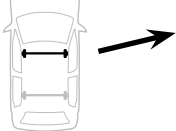


**480R** Rapid Traverse



**480** Traverse

**(North America)**



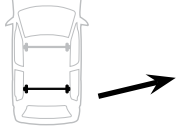
PEUGEOT 508, 4-dr Sedan, 11-

**X inch**

**X mm**

**41 1/8"**

**1046 mm**



PEUGEOT 508, 4-dr Sedan, 11-

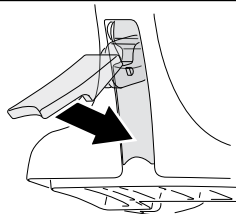
**Y inch**

**Y mm**

**40 1/4"**

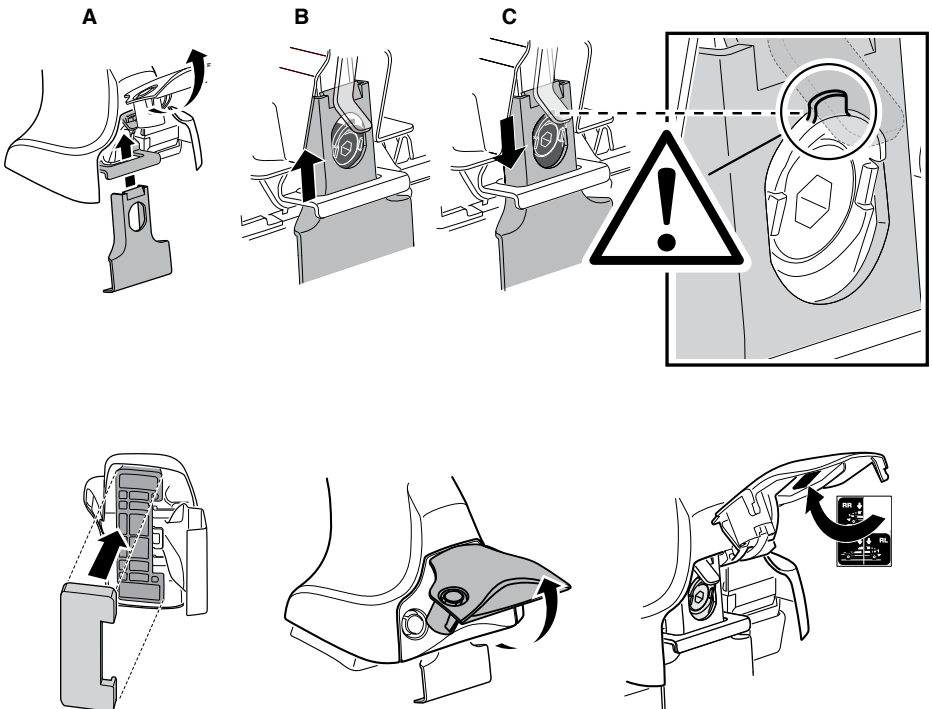
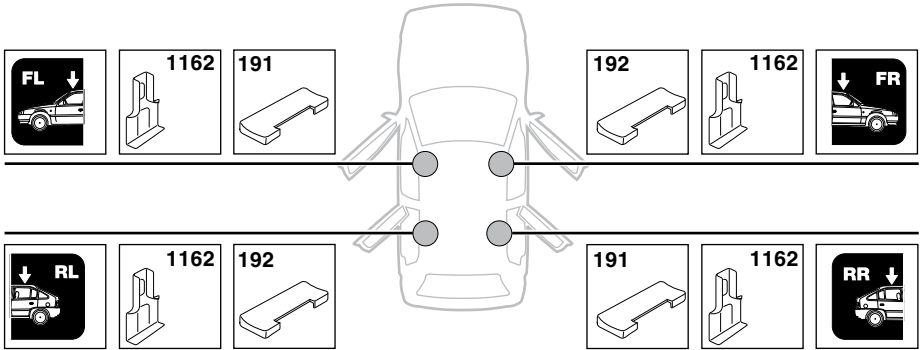
**1021 mm**

**4**

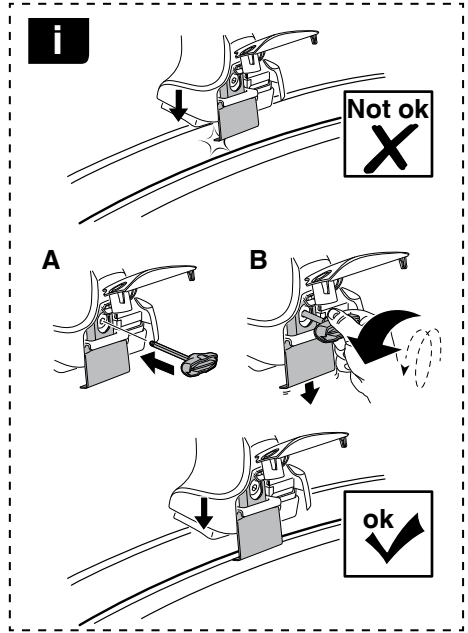


# 5

PEUGEOT 508, 4-dr Sedan, 11-



6



PEUGEOT 508, 4-dr Sedan, 11-

X mm

Y mm

X inch

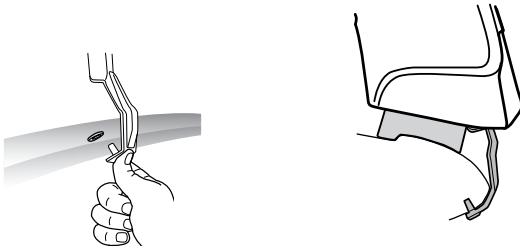
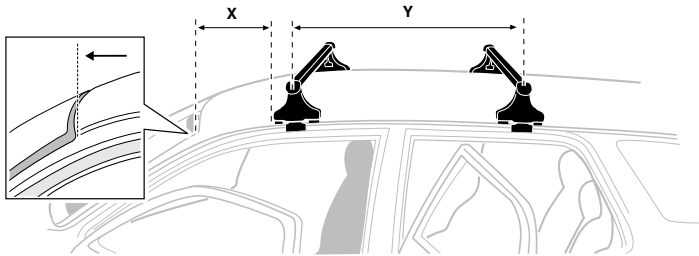
Y inch

265 mm

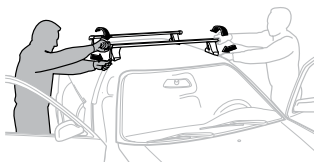
725 mm

10 <sup>3</sup>/<sub>8</sub> "

28 <sup>1</sup>/<sub>2</sub> "



7



**GB/US** Tighten alternately  
**D** Die Schrauben abwechselnd anziehen  
**F** Serrer alternativement chaque côté  
**NL** Afwisselend aan de linker- en de rechterkant aandraaien  
**I** Alternare il serraggio delle viti  
**E** Apertar alternativamente  
**PT** Aperte alternadamente  
**S** Dra åt växelvis  
**FIN** Kierrä vuorotellen  
**EST** Pinguldage vaheldumisi  
**LAT** Pieļieciet pamišus  
**LIT** Užsukinėkite pakaitomis  
**PL** Śruby dokręcaj naprzemiennie  
**RU** Затягивайте попеременно

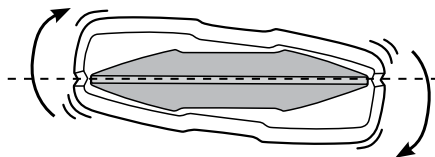
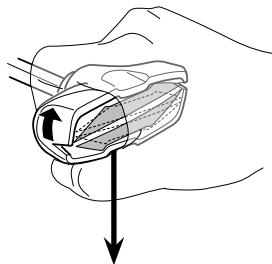
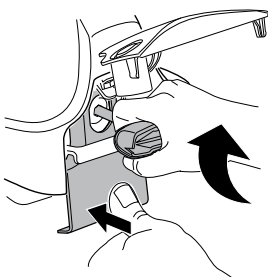
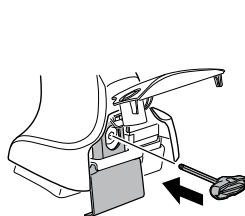
**CZ** Pokręťta bagażnika dokręcaj naprzemiennie.  
**SK** Dofahajte striedavo  
**SLO** Privijajte izmenično.  
**HR** Naizmjenočno zategnite  
**HU** Egymástól függetlenül szorítandó  
**GR** Σφιγίγτες εναλλάξ  
**TR** Dönüşümlü sıkın

**中文** 交替拧紧

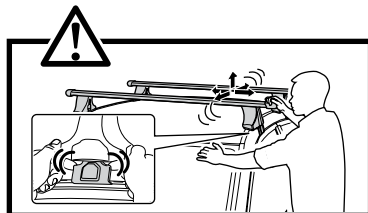
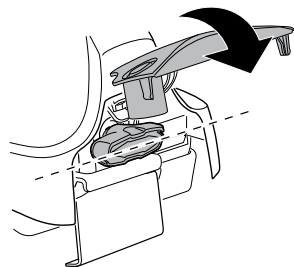
**한국어** 번갈아 가며 조이십시오.

**日本語** 交互に締め付けてください。

**ไทย** ชันในแบบสลับ



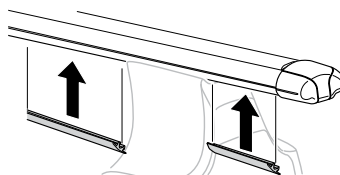
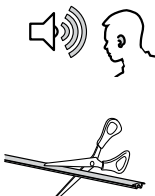
≈ 3 Nm

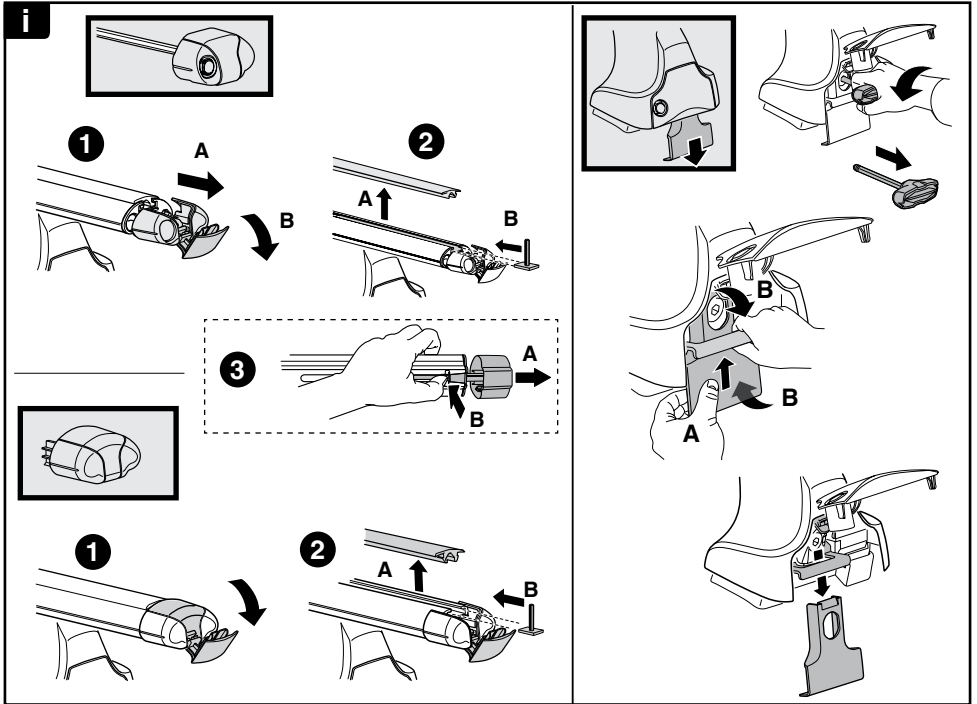
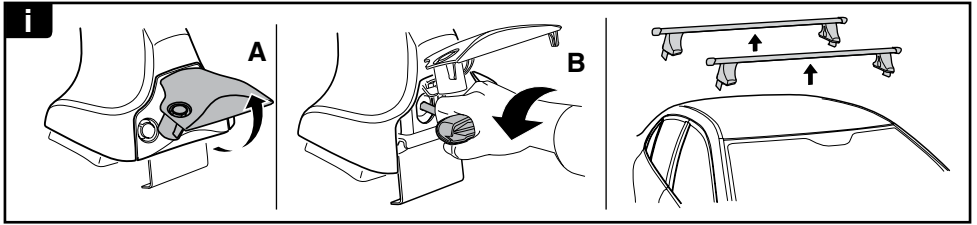


8

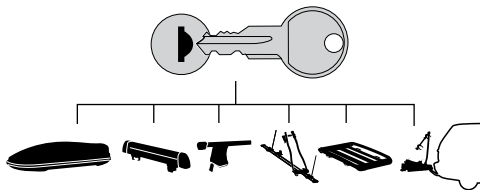


x1  
17 mm





**THULE**  
SWEDEN  
**ONE  
KEY  
SYSTEM**



**544** (x4)

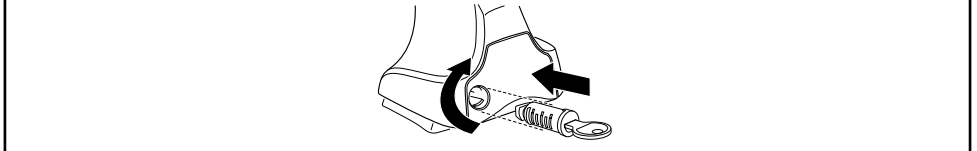
**596** (x6)

**588** (x8)

NA **510** (x10)

EUR **452** (x12)

ASIA



WW ▶ Thule Sweden AB, Box 69, 330 33 Hillerstorp, SWEDEN

NA ▶ Thule Inc., 42 Silvermine Road, Seymour, Connecticut 06483, USA

info@thule.com

customer.service@thule.com



www.thule.com

503-1644-01