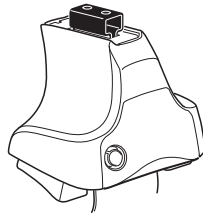
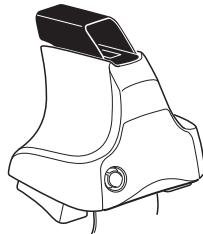
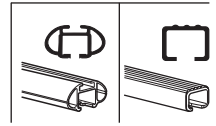


Kit 1708

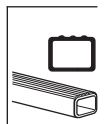
AUDI A3, 3-dr Hatchback, 12-
AUDI A3, 5-dr Hatchback, 12-



754 Rapid System
480R Rapid Traverse (North America)



480 Traverse (North America)



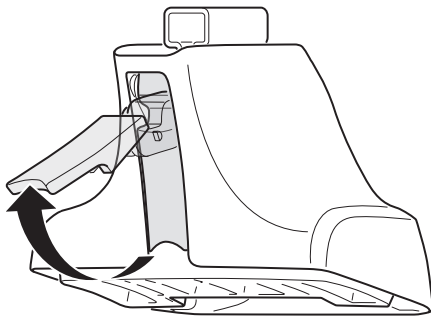
- 754 Rapid System x4
- 480R Rapid Traverse (North America) x4
- 754 Rapid System x1
- 480R Rapid Traverse (North America) x4

- 480 Traverse (North America) x1
- 480 Traverse (North America) x4

- Bar x2
- Hardware x2 (23 mm)
- Hardware x2 (17 mm)
- Hardware x2 (23 mm)
- Hardware x4
- Hardware x4
- Hardware x2
- Hardware x2
- Hardware x2
- Hardware x2
- Hardware x2
- Hardware x2

- Bracket 1127 x2
- Bracket 1172 x2
- Plate 166 x2
- Plate 249 x1
- Plate 250 x1
- Plate x1
- Label x1

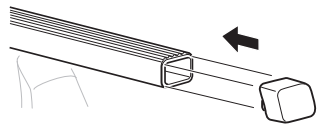
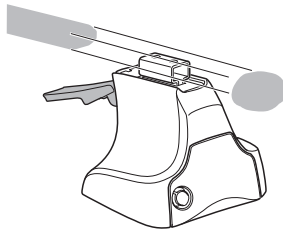
1



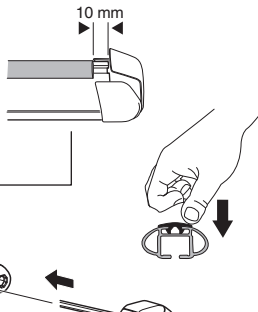
2



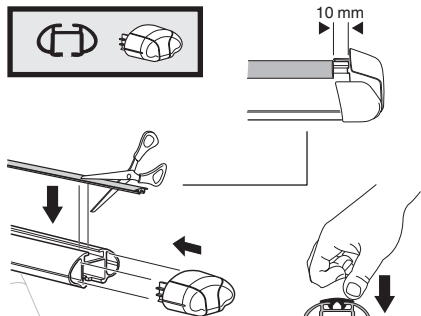
754 Rapid System
480R Rapid Traverse
(North America)



x4



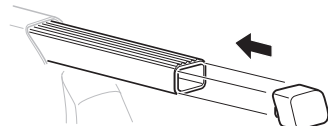
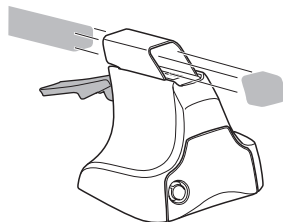
x4



x4

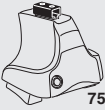


480 Traverse
(North America)

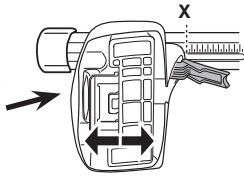


x4

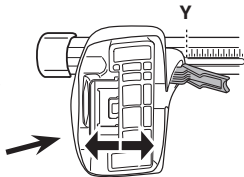
3



754 Rapid System



	X
AUDI A3, 3-dr Hatchback, 12-	36,5
AUDI A3, 5-dr Hatchback, 12-	36,5



	Y
AUDI A3, 3-dr Hatchback, 12-	31
AUDI A3, 5-dr Hatchback, 12-	31

3



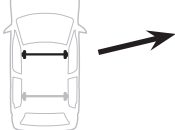
480R Rapid Traverse



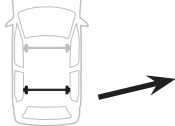
480 Traverse



(North America)

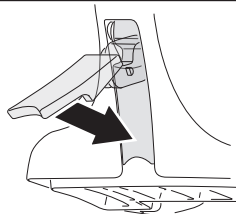


	X inch	X mm
AUDI A3, 3-dr Hatchback, 12-	40"	1016 mm
AUDI A3, 5-dr Hatchback, 12-	40"	1016 mm



	Y inch	Y mm
AUDI A3, 3-dr Hatchback, 12-	37 ⁷/₈"	961 mm
AUDI A3, 5-dr Hatchback, 12-	37 ⁷/₈"	961 mm

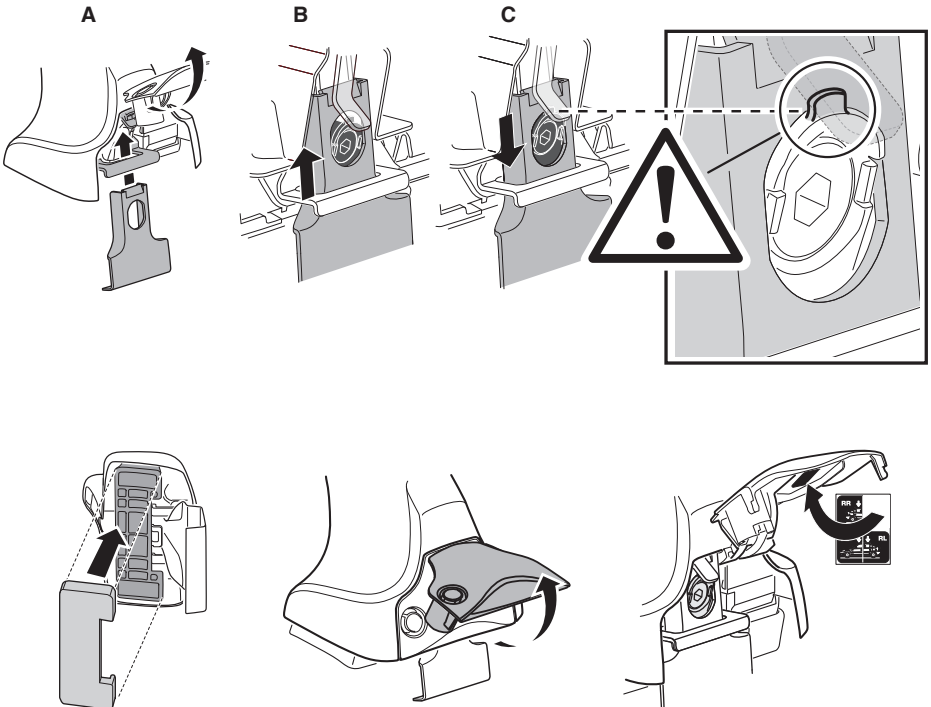
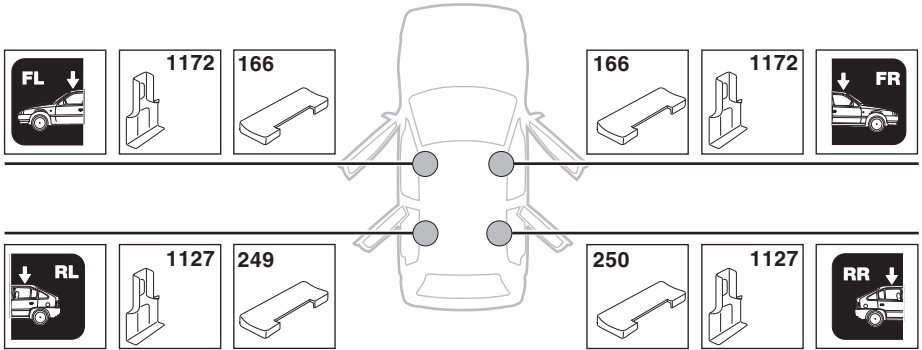
4



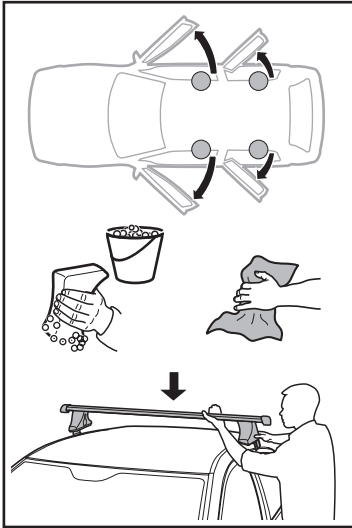
5

AUDI A3, 3-dr Hatchback, 12–

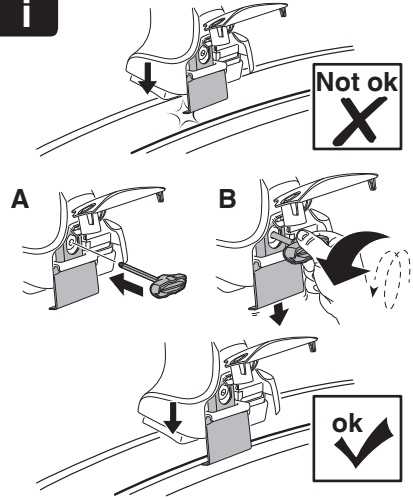
AUDI A3, 5-dr Hatchback, 12–



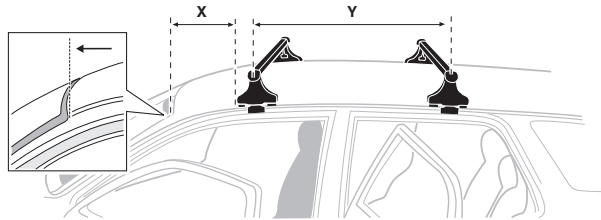
6



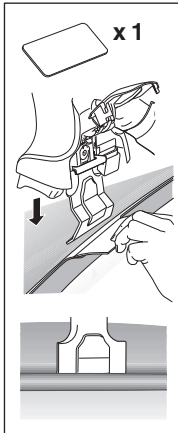
i



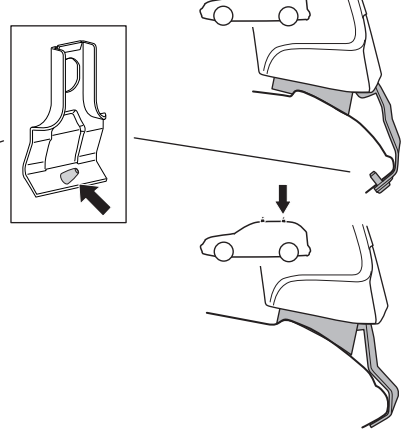
	X mm	Y mm	X inch	Y inch
AUDI A3, 3-dr Hatchback, 12-	250 mm	710 mm	9 7/8"	28"
AUDI A3, 5-dr Hatchback, 12-	250 mm	710 mm	9 7/8"	28"



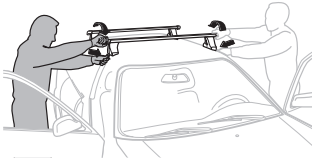
AUDI A3,
3-dr Hatchback, 12-



AUDI A3,
5-dr Hatchback, 12-



7



GB/US	Tighten alternately
D	Die Schrauben abwechselnd anziehen
F	Serrer alternativement chaque côté
NL	Afwisselend aan de linker- en de rechterkant aandraaien
I	Alternare il serraggio delle viti
E	Apertar alternativamente
PT	Aperte alternadamente
S	Dra åt växelvis
FIN	Kierrä vuorotellen
EST	Pinguldage vaheldumisi
LAT	Pielveiciet pamišus
LIT	Užsukinėkite pakaitomis
PL	Śruby dokręcaj naprzemiennie
RU	Загтягивайте попеременно

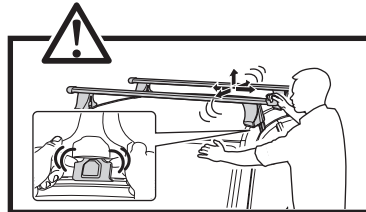
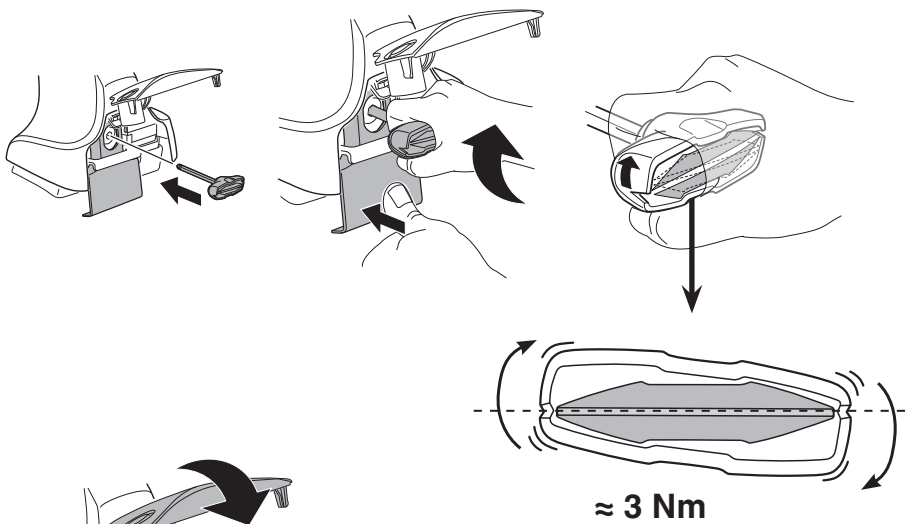
CZ	Pokręťta bagażnika dokręcaj naprzemiennie.
SK	Dofahajte striedavo
SLO	Privijajte izmenično.
HR	Naizmjenočno zategnite
HU	Egymástól függetlenül szorítandó
GR	Σφιγγείτε εναλλάξ
TR	Dönüşümlü sıkın

中文 交替拧紧

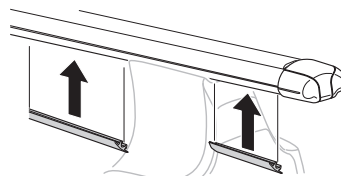
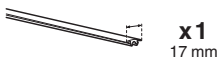
한국어 번갈아 가며 조이십시오.

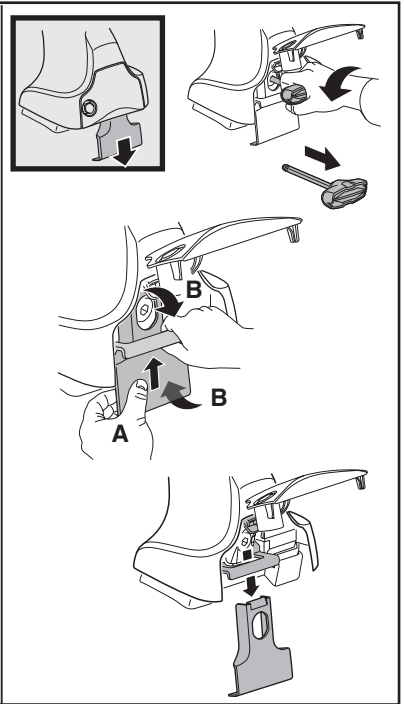
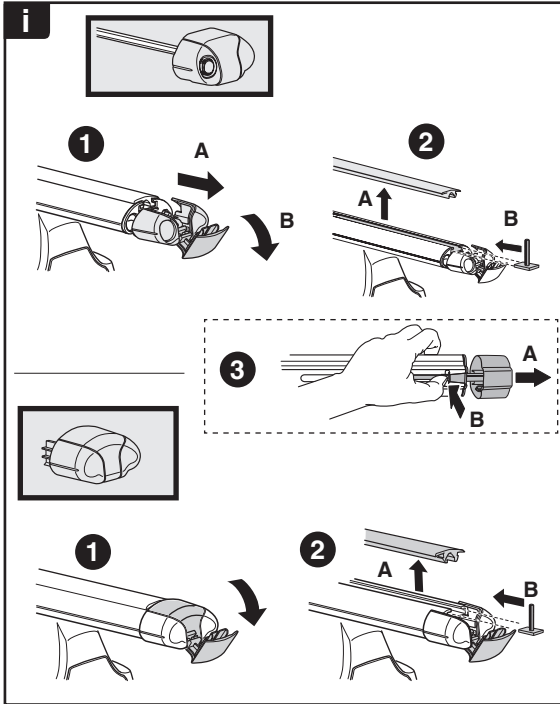
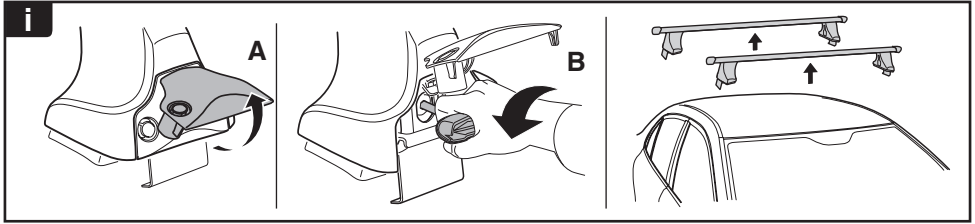
日本語 交互に締め付けてください。

ไทย ชันในแบบสลับ

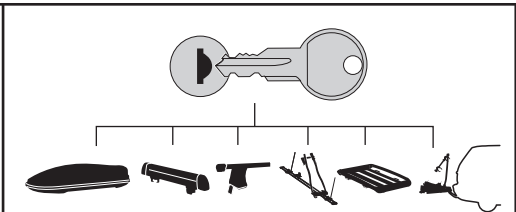


8

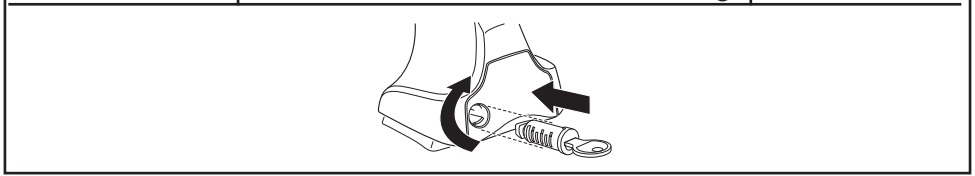




THULE
SWEDEN
**ONE
KEY
SYSTEM**



- 544** (x4)
 - 596** (x6)
 - 588** (x8)
 - 510** (x10)
 - 452** (x12)
- NA
EUR
ASIA



WW ▶ Thule Sweden AB, Box 69, 330 33 Hillerstorp, SWEDEN
NA ▶ Thule Inc., 42 Silvermine Road, Seymour, Connecticut 06483, USA

@ info@thule.com
customer.service@thule.com

www.thule.com